

Cedar Valley Auto Sales
Rt. 422, West of Lebanon, PA
717-273-1372



89 PLY. VOYAGER SE
7-Pass. AT, AC, PS, PB, C, T,
62,000 Mi., White
\$7,695

90 CHEV. GEO TRACKER
4X4, Convertible, 4-cyl., 5-Spd., AC,
64,000 Mi., White
\$8,395



92 CHEV. 1500 SILVERADO
350 V8, AT, AC, PS, PB, PL, PW,
Tilt, Cruise, Bedliner, 32,000 Mi

87 CHEV. VAN
5.0 V8, AT, A/C, PS, PB, Cass.,
4 Chairs & Bed, 70,000 Mi

**18' Scott Silage & Grain
Body, 7 Gauge Floor,
2000 Hoist, Plus Extras,
Assembled & painted,
Ready for Installation,
Your Truck or Ours**

\$9,450 installed

Sunny Acre Sales

RD 2, Tyrone, PA 16686
814/742-7303



Our Mechanics
Are ASE
Certified for Cars
& Trucks

We Service all
Make Trucks &
Cars, Diesel &
Gas. Minor
Service thru
Major Overhaul



We Offer **TOWING**
with our **NEW**
ROLLBACK TRUCK
And Traditional Tow Trucks



Refrigeration & Air Conditioning
State Inspection • Body & Frame Repairs

ARMY TRUCK PARTS

CHAMBERSBURG, PA

SERVING THE NORTHEAST OVER 40 YEARS

THE NATION'S LARGEST ARMY
TRUCK and PARTS DEALER

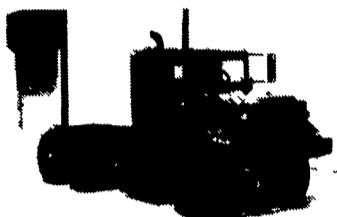
Request Our Free Army Truck Parts Catalog

**MEMPHIS
EQUIPMENT**

821 Lincoln Way West
P.O. Box M
Chambersburg, PA 17201

717/263-4194 FAX 717/263-4555

ART WELLER, GEN. MGR.
MARK SIPES, PARTS MGR.



GMC - REO - 5 TON
DODGE 3/4 TON
KAISER - JEEP 1 1/4 TON
ALL 6x6 & 4x4

ENGINES
TRANSMISSIONS
TRANSFER CASES
DRIVE TRAIN
CAB KITS

NEW TRUCKS

- 1 - 1995 Int'l 4700 GVWR 25,500# 236" WB
- 2 - 1995 Int'l 4900 GVWR 33,000# 206" WB
- 1 - 1995 Int'l 4900 GVWR 33,000# 254" WB
- 2 - 1995 Int'l 4900 GVWR 33,000# 278" WB
- 1 - 1995 Int'l 4900 6x4 GVWR 54,000# 254" WB
- 1 - 1994 UD 1400C GVWR 14,050# 131" WB
- 1 - 1995 UD 1800F GVWR 17,995# 166" WB

USED TRUCKS

- 1 - 1987 Mercedes 32,900 GVW 190" WB
- 1 - 1986 Mack CS200P GVWR 29,500# 196" WB
w/18' Stake Body
- 1 - 1988 Mac-Lander 35' Gooseneck Trailer Tandem
- 1 - 1987 Mack MS-200 C/O GVWR 27,000# 207" WB
- 1 - 1988 Dodge Ram 250 Van PS-PB-AT-AM/FM, V8
- 1 - 1989 Chev Mark III 20 Van, PS, PB, AC, PW, PL, AM/FM
- 1 - 1977 Dodge Ram 4x4 4 Sp., PS-PB, V8
- 1 - 1985 Chevy Silverado C-10 3/4 Ton PS, PB, AT, PW, PL, Tilt, AC,
AM-FM, V8
- 2 - 18 Ft. Reefer Bodies w/Carrier "SilverHawk" Refers
Several Used Van Bodies - Various Sizes
- 1 - 1974 LOCOMO 925 FORWARDER (Loggers Pal)
6 Cylinder PERKINS Diesel Eng. Powershift Trans.
(Eng. Overhauled, Cylinders Re-Built & Crane Pivot)
- 1 - 1990 International Low Boy Trailer GVW 12,000 Lbs. Tool Box and
Sides, Ball Hitch (2) Axles



**RTE. 422 WEST
LEBANON, PA**

(Across From Lebanon
Valley Mall)



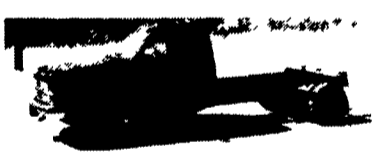
**PHONE
717-274-2000**



SPECIALIZING IN HEAVY DUTY TRUCKS



ALUMINUM BOX
91 CHEVY H.D. 3500
15000 GVW, 484 AT, only 43,000
Miles, 14 1/2 Ft. Box, Roll Up Rear
Door, Slide Out Ramp
Will Sell As Chassis



4x4 Chassis
94 Chevy 3500 Silverado
Long Wheel Base, 84" C.A. 484 I.I. 5 Sp O/D,
A/C, Only 19,000 Miles, Factory Warranty
A Real Powerhouse, Very Rare



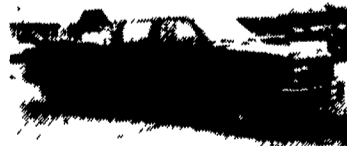
DODGE CUMMINS 4X4
89 DUMP TRUCK
Super Power, Turbo Diesel, Auto, 8 Ft.
Dump Body, New Tires, A Powerhouse



DIESEL CARGO VAN
91 Ford E-350
Extended Length, 7.3 Diesel, AT,
A/C, 60,000 Miles, Real Clean



DIESEL SUPER CAB 4X4
88 FORD F250
Probably the nicest anywhere, 67,000 miles, 7.3
AT, AC, Tow Pkg., Real Real Nice



BIG CHEVY
4 Door 4x4 93 CHEVY
A Beauty, 24,000 Miles, Silverado,
Tow Pkg., Super Clean, 484 I.I.,
AT, A/C



ALUMINUM WALK IN
93 GRUMAN
18 Ft. Aluminum Body, 380 Chevy, V8,
Auto, A/C, Roll Up Back Door,
1800 Lb. Lift Gate



4x4 SUPER CAB DUALLY
92 GMC 5LE
Big & Strong, Ready To Work, 484 I.I.
Auto, A/C, 10,000 GVW, Pool. 4:10
Gears, Clean As A Pin, 34,000 Miles



Diesel 4 Dr. Chassis 90 Chevy
3500 waiting for your bed.
6.2 Diesel, 4 Spd. A/C Excellent body
& Paint Dual tanks.
30,000 original miles \$13,900



4x4 Diesel 93 Ford F-250 XLT
Heavy Duty 3/4 ton 5600 GVW.
Big 7.3 Diesel at A/C Dual Tanks.
Limited slip 4:10 gears. Only \$18,900



4x4, H.D Super Cab 95 Ford F-250
Like new. Looks new. Smells new. Only
2,000 miles. New TK warranty. XLT 381 I.I.,
Auto, A/C, Captain chairs, Factory mag
wheels. Gorgeous.



4x4 Super Cab Dually
93 Ford F-250 XLT
Ready to work 7.3 Diesel, 6 Sp. A/C
Captain chairs. Tow Pkg. 4:10 gears.
Chrome Wheels. 37,000 miles.



MONSTER TRUCK
88 DODGE 3/4 TON 4X4
Hi Sup. 360 V8, Auto, Lift Kit, Brand New 33"
Tires, Aluminum Wheels, Class 3 Hitch,
It Does Run!



65 FORD F150 4x4
6 Cyl., 4 Spd., Lock Out Hubs, Good Body,
Runs Great \$4,900



DIESEL POWER
88 FORD F-SUPER DUTY
Ready For Your Box 7.3 Diesel, H.D., 5 Spd., A/C,
Long 161 W.B. 84" C.A., 14,800 GVW



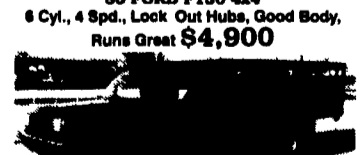
Diesel Cargo Van
93 Ford E-350
Nice & Clean, Straight Body, 7.3
Diesel, Great Fuel Mileage, Long
Life, 39,000 Miles



HEAVY DUTY FOR HEAVY WORK
92 CHEVY 2500
6.5 Turbo Diesel, 5 Sp with overdrive, excellent
fuel mileage, Plenty of Power Air Conditioning,
8800 GVW. 35,000 miles. only \$18,900



COWBOY CADILLAC 90 FORD BRONCO
Gorgeous Eddie Bauer 302 I.I. at a/c tilt.
Cruise, Pwr locks & windows. Captain
Chairs. Console. Aluminum wheels. Running
Boards only \$1,000 miles.



STAKE BODY 88 FORD F-350
12 Ft., Steel Body, 460 I.I., 5 Sp., O/D,
11,000 GVW, 46,700 Miles



Utility Truck
92 Chevy 2800 H.D.
Ready & Willing To Work, Single Wheel, 350 I.I.
Auto, 52,000 Miles, Reading Box, Very Clean