

OVER 60 YEARS IN BUSINESS!

WOLF MOTOR CO.

ROUTES 72 & 283, LANCASTER, PA 17601

CENTRAL PA'S

FORD TRUCK DEALER

Sales Reps.
Charlie Burke

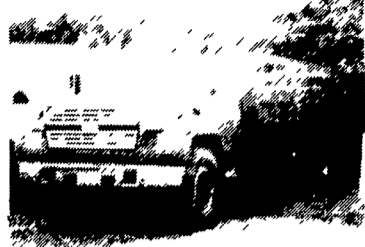
Gary Brenneman
Dennis Asel, Mgr.

717-299-4331

Toll Free 800-637-6612



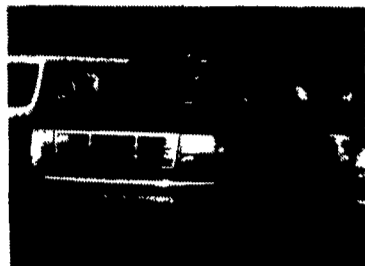
1988 GMC 7500 w/47 TRAILER
Single Axle Tractor w/ Sleeper, Air brakes, 10 Speed, 8.2T, 225 H.P.
\$14,500



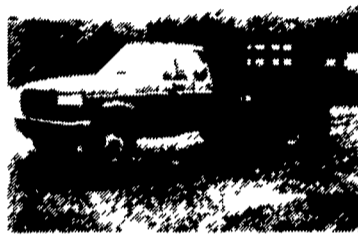
1988 FORD F700
20' Stake Body, 170 HP Diesel, 5&2 Trans. & Air Brakes, 30,000 GVW, AC, 35,000 Miles **\$20,800**



1992 Ford E-350 CARGO VAN 7.3 Liter Diesel, AC, 9,000 GVW, 84,000 Miles **\$12,400**



1993 FORD F450 SUPER DUTY 15,000 GVW, 7.3L Diesel, Auto, XLT, 185" Wheel Base **\$17,900**



1994 FORD F-350 New Leftover, 9' Stake Body, V8, 351, 5 Speed, Manual, A GREAT BUY **\$17,900**



1995 FORD F800 190 HP Diesels: 5 & 2; 25,000 GVW; 10' Dump Body Call for price!

C.P. MARTIN FORD, INC.

RT. 272 ACROSS FROM THE GREEN DRAGON SIGN IN EPHRATA-THE HEART OF LANCASTER COUNTY

733-6644 OR 1-800-258-2677



'90 CHEVY C1500
4x2, AT, Red, 39,000 Mi. (P409)



'95 Ford F250 4x4
XLT, 7.3 Power Stroke Diesel, AT, w/Fisher Snow Plow, only 2,000 miles



'93 CHEVY SILVERADO 4X4,
V-8, Auto., 10,000 Miles (F135)



'94 FORD F150 4X4
XLT, Loaded, AT, AC, Bedliner, 14,500 Miles (P423)



'95 FORD F150 SUPER CAB
4x4, Loaded 8 TO PICK FROM



'90 FORD F-150 4X4,
V8, 5 Speed, Blue (6072A)



'92 FORD F150 4x4
6 Cyl., AT, 22,000 Mi. (6120A)



'92 FORD F150 4X2,
Supercab, XLT, Auto., Loaded (6052A)



'92 FORD E-350,
15 Passenger, Red, Loaded (N613A)



'92 FORD F150 4X4
XLT Super Cab, AT, AC, 34,000 Miles, Loaded (P433)



'94 FORD F150 4X4
AT, AC, Bedliner, 17,000 Miles (P426)



'89 FORD F150 SUPERCAB
4x4, 302 V8, 5-Spd., XLT, Matching Cap, Extra Clean (6130A)

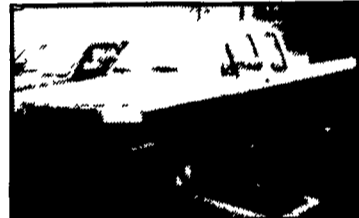
CENTRAL PA'S LARGEST GM DEALER



GRUMAN STEP VAN
1 1/2 In Stock

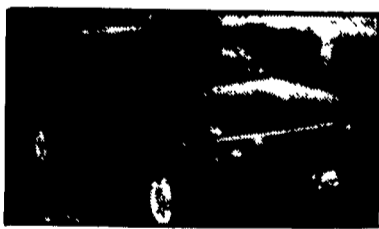


'95 4 DOOR TAHOES
LOADED
6 in Stock



'92 FORD F-150 4x4
Extended Cab, XLT, AT, AC, Loaded

OVER 200 NEW & USED TRUCKS IN STOCK



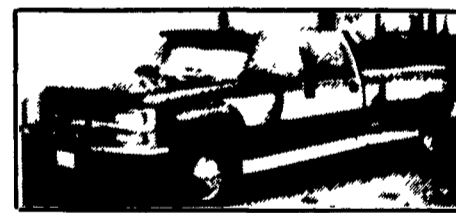
'95 CHEV. BLAZERS
2 Door & 4 Door
27 in Stock



'95 2500 SERIES CHEVROLET
Cab & Chassis of Utility Body
2 In Stock



'91 CHEV C3500 UTILITY TRUCK
Reading Body w/Ladder Racks, Dual Rear Wheels, AT, V8, 1 Owner, Low Miles



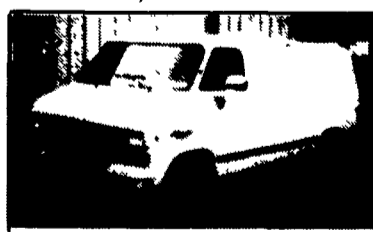
6 '94 CHEVROLET CREW & EXTEND CABS
Dual Rear Wheels, 6.5 Diesel and 7.1 Gas In Stock



'93 GMC HI-TOP CUBE
V8, AT, 15,000 GVW, Low Miles



'91 TO '94 K BLAZERS
2 Door
5 In Stock



'93 CHEVROLET FULL SIZE G20 & G30 CARGO VANS
3 in Stock



CHEVROLET CONVERSION VANS
• Mark III • Roman Wheel • Trade Winds • Country Coach 3640' In Stock

If We Don't Have It, We'll Get It!

Frederick
The SUPERMARKET OF TRUCKS
(717) 274-1461 • (800) 222-5523

1505 Quentin Road,
Rt. 72 (South)
Lebanon, PA

• BILL MORTENSEN

• BILL BREAUULT

• BARB KEEFER