

CARLISLE AUTO PLAZA, INC.

Cars by Gettel Auto Sales

1143 Harrisburg Pike, Carlisle, PA 17013 717-243-3513



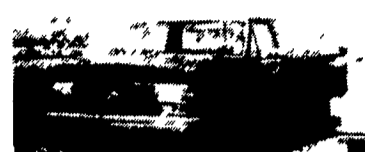
'89 Dodge Caravan Grand LE, Long WB, V6, AT, Air, All Power Equip. Loaded \$8,995 Super Nice



'84 Jeep Gran Wagoneer V8, AT, Air, Loaded, 1 Owner, 38,000 Miles \$5,995



'88 Bronco II Red/Silver, V6, Stick, Power Equipment, Lots of Extras \$7,995



'89 Ford F-150 6 Cyl., Stick, PS, Heck Of A Work Truck \$5,995

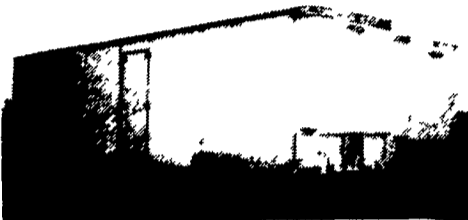
Many More Vehicles In Stock



6850 Gallon Alum. Tank Trailer 6" Gate, Valve, Good Condition \$4,200 717-463-2318

KEENS SERVICE, INC.

• Sales • Service • Rentals • Leasing
Lititz, PA (717) 626-5420 "Since 1963"



1986 Trailmobile Electronics Vans (2 of them), 45x13-6x96 right side door, air ride with 255x22.5 radials, 2 rows E-track with pull-out ramp.



Storage Reefers: 42' roll doors and side doors, running condition, \$2500-\$3500.



1979 Freightliner 290, 10 speed, twin screw power steering, used daily, \$3500.



1984 Kenworth W900B

NTC 400 Cummins, Jake Brake, 13 Speed, 3.90 Eaton Rears, Reyco Suspension, Aluminum Wheels, Wet Line \$18,500

Phone (717) 235-2924 Between 8:00 & 5:00



MACK 6x6 TRUCKS

Cummins V8 Diesel Jake and full Air Brakes P.S. 1400/24 Tires Double Frame Rear Drag Winch (50,000 lbs.), Differential Locks. (60 Tons) Hauling Capacity. Like New Only 800-17,000 Miles. A must for every Farmer.

\$12,500 to \$15,500 (814) 834-1018 St. Marys, PA

LEFEVER BROS. CHEVROLET GEO. CHEVY TRUCKS

406 U.S. Route 15 North, Dillsburg PA Quality Dealer Since 1921 717-432-9611

NEW 1992 CHEV LO-PRO

23,500 GVW, 366 Gas AC, Auto, 18' Van Body



"NEW" 1993 CHEV C-70

33,000 GVW, 366 Gas Air Brakes, 228" Wheel Base (Bed Not Included)

SAVE \$28,000

1994 CHEV C-70 DUMP

33,000 GVW, 215 H.P. Cat

5+2, Air Brakes, Air PTO and End Gate SAVE \$\$\$\$



FISHER TRAILER SALES HORSE STOCK

HORSE - T-divider, manager w/tack space, feed door, 4 wheel brakes, breakaway, spare holder and wheel \$3000

STOCK - Starting at \$2650 includes 4 wheel brakes, breakaway spare holder and wheel, torsion axles, center gate on 14' and up, white spoke wheels, back door full swing with slider

USED - '94 Gn stock 20x6'8"x6 1/2 plywood lined, 2 center gates \$4500

'92 Bp stock 18x6x7 plywood lined \$2800

'90 Bp stock 12x6x6 1/2 \$1500

'81 Bp stock 14x6x6 1/2 plywood lined removeable stall divider \$2000

'83 Gn stock 12x6x6 1/2 plywood lined \$1600

2-horse trailers \$650 and up

Open by appointment or chance RD #2, McVeytown, PA 17051 (717) 242-0941

Full notary service Strodes Mills Rt. 22 Turn onto Middle Rd 1/2 mile

EBY USED EQUIPMENT

BODIES

- (1) 9' Eby Cattle Body
- (1) 10' Eby Cattle Body
- (1) 15' Eby Cattle Body
- (2) 20' Eby Cattle Bodies
- (1) 21' Eby Cattle Body
- (1) 22' Eby Cattle Body

GOOSENECK

- NEW! 1995 Eby 18'x7' Maverick
- 1993 Eby 24'x8'x7' With 4' Tack Room
- 1993 Eby 18'x8'x7' With Rear Ramp
- 1986 Eby 24'x8'x7' Ruff Neck, Tandem Dials
- 1986 Barrett 22'x7'x7' Tall Double Deck GMC Truck With Eby 11' Cattle Body

M.H. Eby, Inc.

1194 Main Street (Route 23) Blue Ball, PA 17506 (717) 354-4971 (800) 292-4752 FAX: (717) 355-2114

4435 State Route 29 West Jefferson, OH 43162 (614) 879-6901 (800) 752-0507 FAX: (614) 879-6904

Agriculture Moves on EBY Bodies

M.H. Eby custom-builds aluminum truck bodies for the agri-transportation market. Nobody offers more sizes and options in:

- **LIVESTOCK BODIES** - Lengths to 32', choice of heights and widths.
- **GRAIN BODIES** - Lengths to 24'; landscape and general purpose dumps to 12'.
- **FLATBED BODIES** - Lengths to 32', choice of 5 widths.

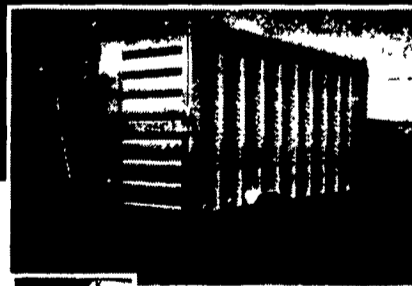
For greater payload capacity, Eby's aluminum design is equal in strength to steel and up to 40% lighter. Our corrosion-resistant components never need painting. That means minimum maintenance, improved appearance and higher resale value.

Eby products have superior standard features. And we offer custom options for virtually any application. Agriculture is your business- building bodies to haul it is ours.



M.H. EBY, INC.

1194 Main Street (Rt. 23) • Blue Ball, PA 17506 • 800/292-4752 • 717/354-4971 • FAX 717/355-2114 4435 State Route 29 • West Jefferson, OH 43162 • 800/752-0507 • 614/879-6901 • FAX 614/879-6904



Let EBY custom build one for you.



MOTORS

New & Rebuilt 350, 366, 427, 454

6.2 Diesels Rebuilt & Used

Will Install Roll Back Service (at cost) 717-762-6415

E-TOWN DODGE

(2) 1995 BR 3500 4x4, Cab & Chassis or w/Utility Body or w/Dump

1994 DODGE BR1500 19K, Auto, SLP, Air

Club Cabs In Stock, More Coming 1/2, 3/4 & 1 ton 4x4. Pickup Trucks In Stock V-10 & Diesels In Stock (15) Dakota's In Stock

ASK FOR MILTON HESS Certified Truck Specialist 717-367-6644 717-653-6667 Elizabethtown, PA