

3 SILOS AND UNLOADERS

ELEC. CONTROL PANELS
for BIG JIM Silo Unloader \$275
717-865-7440

Fiberglass Bulk Feed Bins



Capacities from 2.5 ton to 30 ton
(Tonnage based upon 40 lb density) Industrial Bins Available



P.O. Box 11
Lake Mills, WI 53551
(414) 648-8376

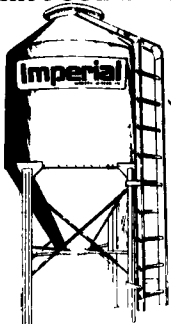
Write for a full color brochure and a free sample of fiberglass - The modern material used for high-performance bulls

Used Silos For Sale

24x70, 20x60, 14x50, 12x50 & 10x45

Call 717-532-3039

Imperial Bulk Feed Bins



100% Smooth Wall Construction
Vented Ground Control Cover
Aluminum Ladders
Bolt-free Storage Area
1 to 147 Ton Capacity
Ten Year Bin Warranty

Call 1-800-558-2945

for the dealer nearest you
Imperial Industries Inc.
Mosinee Wisconsin
Hartan Iowa Van Wert Ohio

Bunker Silos



Precast Concrete Bunker Silos or commodity buildings built to suit your needs. Bunkers available in 8 Ft. or 12 Ft. High



477 East Farmersville Rd., New Holland, PA 17557
(717) 355-2361

BADGER'S AGRI SERVICE, INC.

Dillsburg, PA 15 miles South of Harrisburg
717-432-8377 Brian Badger

CHAIN PROBLEMS?

We have the answer!

"CHAIN 48"

...with stainless steel chain link fence.

FEATURES:

- 3 1/2" diameter STAINLESS STEEL pipe, heat treated for best possible combination of corrosion and wear resistance.
- STAINLESS STEEL bushings, heat treated and precisely designed to produce the best corrosion and wear resistance.
- 20' length for easy handling. FULL ROUND pipe and end caps reduce the likelihood of side bar breakage due to wear or fatigue.
- HIGH STRENGTH TENSILE STAINLESS STEEL and Maximum Working Load Rating available to you.

AVAILABLE ONLY FROM:
BADGER'S AGRI SERVICE, INC.

ZOOK'S SILO REPAIR

Buy And Sell Silos
General Repair Work
Extensions, Roof Repair,
Chute Repair, Tear Down &
Rebuild. Reline With Shotcrete
Distributors, Fill Pipe

RD 2, Box 90
Honey Brook, PA 19344 610/273-9211

MARTIN'S SILO REPAIR

- Moving Concrete Stave Silos
- Gunite Relining
 - Fill Pipes
 - Distributors
 - Roofs
 - Replacement Doors
 - General Repair

907 Centerville Rd.
New Holland, PA 17557
(717) 445-9834

DETWELER SILOS

New Concrete Stave Silos
New and Used Extensions
All Types Silo Repair
Teardown and Rebuild
Silo Relining



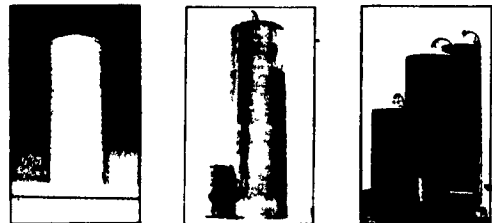
Write or call:

808 Oakville Road, Newville, PA 17241
(717) 532-3039

Big Jim[®] B.U.C.S.[™]

The Solution to Bottom Unloader Problems...from the Silo Unloader Expert

Your Jamesway Dealer has loads of information — including an in-depth video — about Big Jim B.U.C.S., the Bottom Unloader Conversion System by Jamesway. See how you can get faster unloading, increased capacity, better quality feed and reduced maintenance in your steel, poured concrete or concrete stave silo. You can even tour a farm with a B.U.C.S. installation at work. So call your Jamesway Dealer now and get the expert advice you need!



FINANCING AS LOW AS 5.9%
NO PAYMENTS TIL OCT. '95
• Down payment necessary

If interested in A Tour Of A B.U.C.S. Please Contact Jake or Nelson

LAPP'S BARN EQUIPMENT

5935 OLD PHILADELPHIA PIKE, G.P., PA 17527

PHONE: 717-442-8134
717-768-8301

WE SERVICE WHAT WE SELL
— Radio Dispatched Trucks —



Sollenberger Silos Corp.

Sollenberger Silos Corp.
Quality Concrete Structures
Since Before 1910
Manure Management Systems
To Meet Your Needs!!!



Poured In Place Concrete Tanks
SCS Approved

6', 8', 10', 12', 14', 16' Depths
Thru 140' Diameter

Even And Uneven Backfill Designs
Commercial Chain Link Fence



Sollenberger Silos Corp.

A Nitterhouse Company
Box N Chambersburg, PA 17201 (717) 264-9588
Poured Concrete Silos Since 1908

Office Number - 717-264-9588

For Upright Silos Call Bob Francis 717-369-5915
For Bunker Silos & Manure Systems — Evenings — Tabb Justus 717-762-8663

Sollenberger Silos Corp. - Box N, Chambersburg, PA 17201

Name _____
Address _____
City/State/Zip _____
Phone _____ County _____

- Please Send Info. On:
- 1. Manure Pits
 - 2. Bottom Unloading Silos
 - 3. Top Unloading Silos
 - 4. Precast Bunker Silos
 - 5. Feed Bunks
 - 6. Cattleguards
 - 7. Industrial

"THINK CONCRETE WHEN PLANNING FEED STORAGE"



"The Big Jim is doing a fine job bringing the feed down. We really believe the drive-thru, Big Jim System is worth anyone's consideration. It is costing more every year to grow forages and we feel our minimal quality and quantity losses are easily paying for the additional initial cost of this investment compared to that of a bunker. We are throwing no feed away and the cows are milking the best they ever have." (over 90 lbs. per cow.)

Signed/Atwater Farms
Rick Atwater

Drive your truck or mixer-wagon under the 12' high floor for fast and efficient delivery of your wilted hay or silage. Eliminate conveyors from silos to mixer.

30'x100' With Big Jim Drive Thru

Call for an appointment to discuss your storage needs and assistance in completing the "Cost Analysis Worksheet" developed by the Crop Storage Institute.

Bob Francis - (717) 264-9588

Also available in 20' and 24' diameter silos to store from 400 to 3,000 tons of forage.

MEMBER: International Silo Association/PA Forage and Grassland Council/AM, Society of Agricultural Engineers/Crop Storage Institute.



Sollenberger Silos Corp.

