

FORKLIFTS

2,000 TO 15,000 LB
\$1,000 TO \$12,000
GAS/LP-DIESEL-ELECTRIC
Cushion-Pneumatic-Rough Terrain
New Komatsu Forklifts Available
PA INDUSTRIAL EQUIPMENT
(610) 369-9778

JD 490 Excavator..... Call
 JD 350C 6 Way dozer..... Call
 1988 JD 410C Backhoes EROPS..... Call
 1988 Gehl 3510 Skid Steer 1550 hr..... Call
 New Thomas Skid Steers & Attachments... In Stock
 Sweepster 72" angle broom fits most loaders

60" Sweepsteer Broom - Demo

J D EQUIPMENT
 Pennsburg, PA 18073
215-679-5958

PARTS PRICED RIGHT DISMANTLING MOST MAKES & MODELS

OF CONSTRUCTION EQUIPMENT

Cat	IHC	Galion
Case	Michigan	Wabco
John Deere	Hough	Dynahoe
Trojan	Terex	Koehring
Drott	Hein Werner	AC/Flat Allis

& Others

Over 600 Machines Dismantled

NATIONWIDE PARTS LOCATING SERVICE

We have three Computer Parts Locator Networks, Nationwide & Canada, ready to serve you. In less than a minute over 600 Used & New Parts Dealers will receive your parts request. Parts are located easily & at substantial savings. Try Our Services.

Save \$\$\$ Parts Shipped Anywhere Direct To You. All Parts Guaranteed
 "We Return All Phone Calls"

BALANDA EQUIPMENT CO., INC.

P.O. Box 407 • Route 29 • Palm, PA 18070
 Phone: (215) 679-3900
 • Fax: (215) 679-8727

TOLL FREE: 1-800-322-8030

FOR NEW AND USED CONSTRUCTION EQUIPMENT PARTS AND ATTACHMENTS

CALL

H.E.L.P., INC.
1-800-446-0505

Specializing in Caterpillar
 Parts also available for Case,
 John Deere, IHC, Flat, Etc.

HEAVY EQUIPMENT LOADER PARTS, INC.

R.D. #2 Box 2230 Route 22
 Grantville, PA 17028

1a CONSTRUCTION EQUIPMENT

1967 Centerville 12-ton tri-axle trailer, electric brakes, \$1200, 1972 Ford 4000 rough terrain forklift, 6000lb., \$6500; 1974 GMC 28,000 GVW dump truck, needs engine & trans., \$1100. 610/346-8588.

1974 Caterpillar 941B crawler loader, enclosed ROPS, good condition, fair U/C, \$15,000. (814)667-2581.

DISMANTLING FOR PARTS Just arrived for parts 2 Case 580 CK backhoes Lots of good parts available.

BALANDA EQUIPMENT
 P.O. Box 407 RT 29
 Palm, PA 18070.
 1-800-322-8030

440 JD Trac Loader, GM Diesel, \$3200 OBO. Evenings (814)367-5822.

70 ton Hyd. press break and 1/4in x 10ft hyd. shear both machines are like in new condition; Burlin PA, Somerset Co.; & 814-267-4484, evenings 814-267-3778.

'74 White truck w/Prentice loader; Franklin skidder; loader for Ford tractor; roto-phase; Frick log turner; 318/350 Detroit motors; Pete air-ride; 38 Int. rearends; Fuller 13spd transmission; trailers; electric motors, starters, switches Clearfield, (814)672-3196.

78" HD bucket, Esco breaker, both fit NH skid loaders. (717)328-2336.

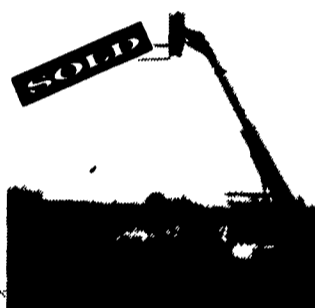
'87 Case 8550 crawler loader, 3500 hrs., 75% U/C, 1-owner operator, \$35,000. 717-432-8763.

941B CAT trac loader, good condition, U/C 90%, 1 1/2 yard bucket, Ser. #80H1293, \$13,100; 951 CAT trac loader, good condition, U/C 90%, 1-3/4 yard bucket, Ser. #86J1026, \$13,100. 717-988-3473; 717-758-3440.

941 Cat loader, real nice. 717-673-4331.

AC 8000# forklift, propane, PS, side shift, triple mast, 15' lift. Make offer. 717-345-4882.

A.C.HD11EP Dozer, new PB & sprocket, needs trans. repair, \$5900. 6pm 717/656-9660, No Sunday Calls.



JCB 525-B HL 4 Wheel Drive enclosed Cab, 48' Fork w/Side Tilt, Material Bucket w/Quick Attach. 22' Reach, 5500 lb. Capacity. **\$23,500**

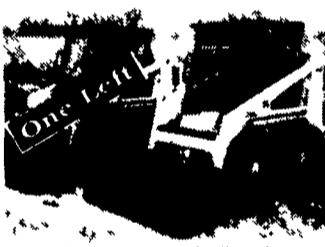


1987 Cat 935B, One Owner, 2100 Original Hours, New Sprockets, Bushings Turned, Original Paint. **\$27,000**

Coming In: 1986 Cat 416 backhoe
 JLG 60F Manlift 8' Basket w/Rotater, Good Condition. **\$19,500 Best offer**



John Deere 455 E Crawler Loader 3100 Hr., Good U/C **\$21,500**



Bobcat 743 skidloader 1988 w/cab enclosure aux. hyd. **\$8,500**



John Deere 575 Skid Loader, 1800 Hr., Good Condition **\$7,900**

Financing & Lease Purchase Available

Weaver's Equipment Sales

THE NEW MATH FOR THE 90'S

90 Dollars for 90 Days Equals:

The Lowest Investment for The Greatest Return Today!

You can obtain the equipment your company needs with small down payments and easy paperwork.

OMNI LEASING makes your company come to life faster and become more efficient.

OMNI LEASING PROVIDES:

- 100% Financing of Used and New Equipment
- Essential Tax Write-offs
- Programs to fit the Needs of Your Business
- 24 to 60 Month Lease Contract, Credit Approval Required

Be at the head of the Class, **Call OMNI TO SET UP YOUR CREDIT LINE NOW!**

OMNI LEASING INC.

594 S. West End Boulevard, Quakertown, PA 18951

800-945-OMNI

Brenda Foster
 800-933-7101



Case 586D diesel, 21' mast, overhauled, side shift, 4WD, all new rubber



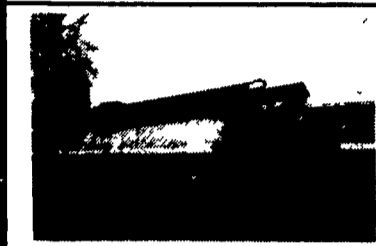
JD 2010 Tractor w/720 Loader & Backhoe, Good Rubber **\$4,500**



87 JD 575 Skid Loader, Good Rubber, Nice **\$8,500**



86 Case 455C Crawler Loader, Only 1600 Hours, Nice **\$22,000**



JLG 40' Man Lift, Rebuilt Motor **\$8,500**



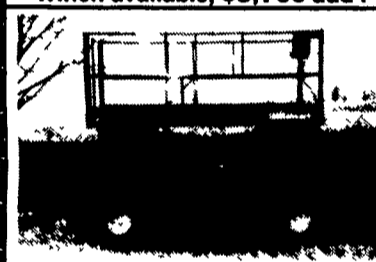
Terex wheel loader, good rubber, new paint



JD 550 Diesel w/6-Way, 90% UC., Without Winch **\$18,000.** Winch available, \$3,700 add'l



5000 Lb. Shoot Boom Job Handler, Cummins 4 Cyl. Dsl., Foam Filled Tires **\$16,000**



Wildcat 25' Platform Lift w/4' Extension **\$4,900**



JCB 4x4 Shoot Boom Fork Lift, Very Clean..... **\$24,000**

87 JD 310C Tractor, Loader, ROPS, Backhoe.....	\$18,500
86 Ford 555B, ROPS, Tractor Loader Backhoe.....	\$17,500
85 JD 410B Cab, ROPS, Tractor Loader Backhoe.....	\$18,500
88 Cat 966E Wheel Loader.....	\$79,000
86 Kawasaki 8522 Wheel Loader.....	\$42,000
75 Case 1450 Crawler Loader, 3000 Hours.....	\$14,000
84 Case 580 Super E Tractor Loader Backhoe, 4x4 w/Extend-a-hoe.....	\$21,000
88 Case 1155E Crawler Loader, UC fair.....	\$28,000

• We Buy & Sell • Financing Or Lease Purchase Available

AA Equipment

1797 Robert Fulton Hwy., Quarryville, PA 17566

717/529-2512

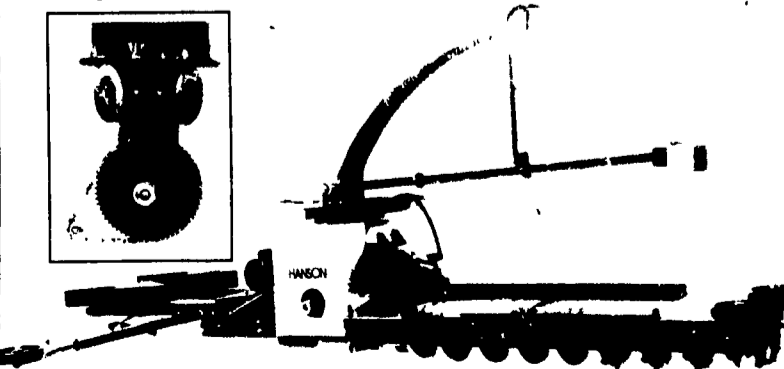
No Sunday Calls

3 SILOS AND UNLOADERS



• Simple, positive, clean design
 • Rugged and reliable
 • Less parts and maintenance
 • Easy to service
 • No right angle gear boxes or universal joints
 • Cost effective

The RADIAL difference!



CALL FOR THE DEALER NEAREST YOU OR CONTACT: KRIS KNUDSEN-AREA MANAGER
 717-653-0385 Fax 717-653-0243