

Public Auction Register

Closing Date Monday 5:00 P.M.
of each week's publication

FRI. AUG. 11 & SAT. AUG. 12 - Martin's Annual Summer Auction of Horse drawn carriages, sleighs and antiques. At Leb. Area Fairgrounds, Leb., Pa. Martin Auc'ts.

TUES. AUG. 15 - 7PM Feeder Pig Sale, at Westminster Livestock Auction, Westminster, Md.

TUES. AUG. 15 - 8PM Feeder Cattle Sale. Carlisle Livestock Market, Inc., Exit 12 off I-81 turn South - then left onto Alexander Spring Rd. 249-4511.

WED. AUG. 16 & THURS. AUG. 17 - Large Two Day Sale of Farm Equipment, Etc. Located 6 Miles South

Of Chambersburg, Pa. One Mile East of Marion along Rt. 914, 1/4 East Off Rte. 81, Exit 4. Owners, Jerrold & Gloria Oaks. Marion Auction Service.

FRI. AUG. 18 - 7 PM Horse Sale. New Holland Sales Stables, Inc, 101 W. Fulton St., New Holland, Pa.

FRI. AUG. 25 - 1:30PM State Graded Feeder Pig Sale. Carlisle Livestock Market, Inc., Exit 12 off I-81 turn South then left onto Alexander Spring Rd., 249-4511.

SEPTEMBER

FRI. SEPT. 1 - Fall Machinery Sale. Belleville Livestock Market, Inc.

**ANTIQUE FURNISHINGS - FOLK & FINE ART - :
LIVE STEAM LOCO - FINE CHINA - TOYS - DOLLS
- COINS - GLASSWARE - INDIAN ARTIFACTS -
CLOCKS - RADIOS - COLLECTABLES - GUN
AT PUBLIC AUCTION
MAY 20, 1995
AT 9:30 A.M.**

Located at the Wotring Auction Center. From Allentown, PA follow Route 309 North to Schnecksville at the "Y" follow 873 north for 4.1 miles. Auction on right! OR just South of Slatington, PA on 873. OAK: S roll top desk, hall stand, hat rack/mirror, washstand & chest/drawers, flat top desk, rockers, parlor stand.

Cottage washstand, plank rockers, chestnut (?) corner cupboard, wal. sleigh style cradle, var. plank chairs, feed chest, music cabinet, deco kit. cabinet, double schooldesks, var. children's chairs, early 7 spindle Windsor chair, mahog. crank Victrola & Mahog. Edison C19/vol. control, large mahog. ogee frame.

ART: 1822 9 1/2" x 15" fractur bookplate in early Ger. Bible, early 19th Cen. Lehigh Co. oil portrait/woman, large var. prints, watercolors, var. Ger. style birth certificates, small oils, etc.

RADIOS: Fada yellow & orange 7-11, Pilot Radio TV 2-1/2" screen/magnifier, var. bakelite tabletops - some wood, var. floor models.

CLOCKS: French bronze figural mantel, HerschendeHall Grand Prize 1919 Cincinnati, approx. 2 doz. mantel clocks - some carving/cat & mouse motif etc.

GUNS: Ky. rifle Leman Lancaster fullstock, Ky. rifle 1/2 stock, flint Ky. rifle marked Aldenderfer 1818 (Reading), Trapdoor Springfield, Eng. roweler (no lock), Belgium frontier revolver.

TOYS: Live steam loco 4-8-4 & tender approx. 5' long (2-1/2" outside flange), lots celluloid Easter rabbits/carts etc., mech. occ. Jap peep, old stuffed teddy bears, iron putz fence, tin truck/siren, CI horse, scooter, tin Marx train, Oliver plow, Chain sand see-saw/rabbits, doz's & doz's small putz figures-animals-CI Indians-etc., doll furniture, var. cast-tin-early plastic trucks & cars, 1873 CI volunteer cap pistol, var. old snow sleds, early M. Mouse tapestry rubber cat & Minnie puppet, DOLLS: large comp./china head, 1914 DEP R3/0A, 1909 DEP R 7/0A, 2 m/b Japan (Morimura) 12" character body, others.

Carnival water set (7 pc. N. grape), peanut oil lamps, approx. 2 doz. others incl. miniatures, caboose lamp, switch lantern NYNH&H RR, large PRR oil can, F. Jones brewing adv. pipe/tin case, wooden drum/deco artwork, Nazi belt/buckle & emblem plate, 2 butterprints (1 early EAGLE), bicycle lamp, large var. game plates, lots of china access. pcs., dec. bowls, pressed glassware, ironstone, GWW lamps, physicians pill cases, var. coffee grinders, pitcher & creamer collection fine china-yellowware-luster-lots of moosehead creamers, large number of wooden carved birds by MOSEBACH-incl. shorebirds, brass skater's lantern, Majolicaware-plates-mug-sugar-etc. var. mounted deer trophies, APPROX. 1 DOZ. FOLK ART LOG BUILDINGS - early 20th cen. Germanic style, doz.'s of LVR/R/Mauch Chunk stereo & post-cards, old Easton, Pa. paper memorabilia, CI butcher kettle, geisha girl chinaware, McCoy applebasket cookie jar, wooden boxes, copper lamp filler, Francoma vase 43 & 30A pitcher, J. Weiler-Allentown "blue" adv. crock, crocks & jugs - 1 blue dec., Dauffer's beer tray, depression glass, Scandalli accordion, CI lamp brackets, collect. of hand bells, agate & tin cream pails, Ger. toby creamer, var. old hunt knives, Lingard Webster teapot, var. old treenware utensils, var. needlework, Yellowware & spongeware bowls, tinware, Aust. & Jap. chocolate pots, lots of dec. Jap. china incl. figures, lots of small carved oriental figures (var. materials), lots carved wooden figures, Bristol vases, lots blue/white pottery, agate berrypail, calendar plates, Noritake pcs., china pin & dresser boxes, Bennington toby creamer, Rockingham "hound" pen stand, var. glass & china vases, Ray-o-lamps, large pedestal apothecary style ZATEX chocolate billets adv. jar, mariners binnacle, ewers, tin candle-mold, old Planters jar, jardineers, JS GER. lobster dish, Gaudy Welsh pitcher, chamber set pcs., Meerschbaum pipes, 1876 Lehigh Co. auction poster-stonehouse & slate lands, 1870s Eng. leather sew. mach., pr. brass & agate fl. lamps, var. chandeliers, CALSO gas pump globe, dutch elbow locks.

COINS: Doz.'s silver dollars, doz.'s large-eagle-Indian cents (mostly large cents).

NOTE: MANY ITEMS TO BE ADDED BY SALE TIME! NO BUYERS' FEES! TERMS: CASH OR PA CHECKS. NO out of state checks - travelers checks or bank letter of credit prior to sale.

TIM WOTRING
AU1563L
610-799-4843

JOHN PFEIFFER
AU2982L
610-767-9330

AUCTION HOUSE
610-767-8610
PREVIEW 5/19/95 • 5 PM TO 8 PM

PUBLIC AUCTION



MOD. HAYING
EQUIPMENT & MISC.
EQUIPMENT

Fri., May 19, 1995
at 6 PM

(South of Hamburg) between Shoemakersville & Leesport, (near Glen Gery Brick Co.), turn East off Rt. 61 onto Shoemakersville Rd., go 1.2 miles, turn left onto Brown Rd., 0.4 mile to farm on left. Berks Co., Pa.

TRACTOR: Int. 656 Hydro w/fh;
PLANTING: Int 400 Cyclo 4 r planter w/auger fill fert & monitor;
TILLAGE: Int #500-11' transport finishing disc; Brillion 18' transport wing harrow;
HAYING: Kuhn #500 PTO tedder; Zimmerman PTO tedder, NH 258 (hyd driven) rake w/dolly wheels; JD 348 baler; Int 445 baler; NH #1063/160 bale Stackliner wagon; Farmhand bale sled; side load portable field elev; Little Giant 28' tube type elev; NH 30' b&c elev; NH 144 hay inverter;
MISC: 200 gal. trl weed sprayer; Gandy preservative applicator; 1300 gal & 2600 gal poly tanks; Int 160 manure spreader w/end gate; gas eng driven 110-220 3500 watt gen; (2)-275 gal 7 (1)-100 gal. fuel tanks; 12 V fuel pump for pick up truck; 25 pcs 36"x12" alum roof metal; 2 sets of 18.4x38" snap on duals;
TRUCK: 1976 Dodge 1/2 ton pick up
NOTE: Listed above is some very nice haying equip, owner is not going out of business, he is shifting his operation to lg square bales, everything sells to the highest bidder, except the Int 656 tractor

TERMS: Cash or acceptable check

Refreshments Avail

FOR:

RONALD & KATHRYN KERSHNER

Conducted by
PO Box 215-Fogelsville, PA 18051 (610) 395-8084-Licence#AU-001809-L
RALPH W. KETTLEROYER AUCTION CO. INC

AUCTION

**FARM MACHINERY *
REAL ESTATE
Walton, New York
Saturday, May 20
11:00 AM**

Having discontinued their dairy operation, George and Irene Conklin have commissioned us to sell their farm machinery and offer their real estate at public auction. From Route 10 in Walton, take North Street to East Brook Road, 7 miles to auction. Real Estate includes 106 acres with a 4 bedroom home, 26 tie dairy barn, 2 silos, machinery shed, and shop to offered at 11:00 AM.

A very well maintained line of farm machinery and barn equipment begins selling at 11:30 am or immediately after the real estate.

FARM MACHINERY: International 756 tractor; Int. 460 gas tractor; 2 pair double ring chains; New Holland 782 forage harvester w/822 corn head and 770W grass head (nice); Gehl 2160 10' mower/conditioner (used one season); John Deere 714A unloading wagon w/canopy (sharp); Gehl 88 Hi-throw blower; John Deere 602 fertilizer spreader (taken care of); John Deere 407 7' rotary cutter (drawbar hitch); Gehl 309 slinger manure spreader; John Deere 4 bottom hydraulic reset plows; International 2 row corn planter; McCormick 13 hole grain drill; crop sprayer; John Deere 9' front mounted heavy duty blade; Allied 8' back blade; quick hitch field cultivators; materials elevator; Int. 10' discs; 10' harrows; Surge 25 KW PTO generator; Universal milker pump; 400 gallon Mueller bulk tank; 1 1/2 pipeline; 14' Jamesway silo unloader; 18' Jamesway silo unloader; appx. 26 rubber cow mats; semen tank w/some semen; appx. 20 face cord of seasoned firewood; plus a small quantity of misc. small tools, etc. usually found on the farm.

TERMS ON MACHINERY: Cash or Good Checks



Dale Lambrecht, CAI Auctioneer and License Real Estate Broker
RD #3, Box 307, Walton, NY 13856
(607) 865-6951
"We Sell the Earth and Everything On It"

PUBLIC AUCTION

Valuable Real Estate, Contractor Tools, Farm Equipt., Beef Herd
Sat. June 3, 1995
9:00 A.M.

Real Estate - 11:00 A.M.

Located at 171 W. Airport Road, Manheim Twp., Lititz, PA. From Lancaster-501 N. to West Airport Rd. turn left, go approx. 1/2 mile to property on left.

Real estate consists of approx. 10 acres of which 8 acres are meadow enclosed with hi-tensile fence, 2 ponds and stream. Stone 2 1/2 story house with frame addition, mod. kit., dining rm., lg. family rm. w/stone fireplace, laundry, office, 3 bdrm (1 master), 1 1/2 baths, hardwood. floors and lg. sun porch, oil hot water heat, city water and sewer. Out buildings include 1 1/2 story garage, stone spring house, and 40'x90' pole shed w/cement floor.

This property is ideally situated in Man. Twp. close to school, church, main hwy. and airport. Zoned agriculture at present time. Ideal for out of town business or someone who loves the outdoors and needs a little more room.

You may view property by appt. 665-6684.

TERMS: 10% day of sale, balance by July 3, 1995

Contractor tools, office furniture, 84 Isuzu 4 W.D. PU, 94 Pequea trailer w/ramps, 91 JD 855 D. hydro loader, 60" belly mower (low hr-like new), 5 Angus cows w/calves at side, 1 Angus bull out of Scotch Cap. Watch for full listing.

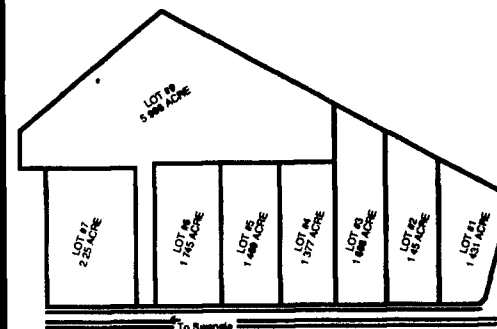
Sale by
Jon W. Robbins
Jon Gruber Atty

WOLGEMUTH AUCTION SERVICE
BOB Lic. # 1534 Dennis
Ph. 665-6684 or 733-8192
John Hess (Appren.)

8 CHOICE BUILDING LOTS
30.8 ACRE FARM LAND

PUBLIC AUCTION
Sat., May 27, 1995
Auction Time 1:00 P.M.

LOCATION: From Lewisburg take Route 45 West through Mifflinburg to just before Hartleton, turn left at Christ's United Lutheran Church onto SR 3005, go 7/10 mile turn right onto SR 3008 go 1/2 mile to Swengel, turn right on Orchard Road go 1/2 mile to lots on left (watch for signs). Union Co., Lewis Township.



30.8 Acres Farm Land

in Swengel with frontage on two roads and a stream. Public sewer.

NOTE: All lots being offered at auction are perked and approved building lots and sewage permits are ready to be issued. All 8 lots are choice country lots with a great view. Don't miss this opportunity to purchase a beautiful lot to build your dream house. Be prepared to buy, owners plan to sell! For further information contact the owner at (717) 336-2690. Auction to be held on site.

TERMS: 15% down payment on auction day, balance at final settlement on or before July 14, 1995.

ATTORNEY: Michael T. Hudock,
(717) 966-3006.

Auction By
**Eugene K &
Linda S. Martin**
(717) 336-2690

AEM Professional AUCTIONEERING
MARTIN AUCTION SERVICE
AU-002280-L
410 West Church Rd.
Ephrata, Pa. 17522
(717) 733-3511