

**AUCTION
REAL ESTATE, ANTIQUES &
HOUSEHOLD GOODS**

SAT., MAY 20 @ 10:00

238 E. Kercher Ave., Lebanon, PA.
Between Rt. 343 & Mt. Zion Rd.

REAL ESTATE @ 10:00 consisting of 1.5 Acres w/beautiful country home & a mobile home w/attached family apartment + out buildings.

TERMS: \$12,000 deposit day of sale.
SETTLEMENT: on or before 30 days
OPEN HOUSE: Sat. May 6th 2:00-4:00 or by appointment.
Antiques & goods following Real Estate include South Bend cook stove, roll top antique oak desk, Butcher kettle, dovetail blanket chest, china closet, lantern, furniture, freezers, air conditioners, lawn & garden supplies, mower & much more. Call for complete list & directions. 717-933-4201

TERMS: Cash or good check

AUCTION FOR:

Dale & Shirley Fake

Auction By: Auctioneer:
Jim McClellan AU2831-L

**Farmwood
Auction Co.**
717-933-4201 AY43L

PUBLIC AUCTION

June 7, 1995

(A) 97± Acre Farm
With Residential "Opportunity"
(For Agricultural Purposes Only)

(B) 136± Acre Farm
With c. 1850; 2 Story,
5 BR Colonial Farmhouse

Conventional dairy barn, hay barn,
feeding area, metal pole barn, 4
masonry silos, 6,200 bushel grain bin,
two closed-bay storage building plus
other related improvements.

(A&B) 233± Acres
(Combined) Farm

\$2,500 Minimum Bid/Acre

**A NJ Farmland
Preservation Project**

Readington Township
Hunterdon County, NJ

Call for details:
609-984-2504

PUBLIC AUCTION

(3) TRACTORS, FARM EQUIPMENT,
2-WAGONS OF SMALL FARM TOOLS,
APPROX. 6-TON EAR CORN,
ANTIQUES & FARM TOYS

**SATURDAY, MAY 20, 1995
AT 9:00 AM**

Located: Along Indian Trail Rd., Centre Twp., Berks
Co., PA. Turn off Rt. 61 just North of Leesport onto
Bellemans Church Rd. through Dauberville for
approx. 2 1/2 miles & right onto Indian Trail Rd. for
1/2 mile to auction. Watch for signs.

FARM EQUIPMENT: Farmall 300 TA w/weights (nice),
Farmall H w/fenders (good rubber), Farmall F30 w/spoke
wheels, Int. #990 7' haybine, N H #56 hay rake, Int. #46
hay baler, New Idea 7' pull type grass mower, snow plow
for 300, 24' Smoker bale elevator, (2) 14' hay wagons
w/sides (1-Int gear), 7' PTO hay tedder, Int. #130 PTO
manure spreader w/new web chain, N. Idea corn sheller,
Brady PTO chopper, David Bradley 2 pt PTO corn sheller,
Lentz PTO plate feed grinder, Int. 3x16" fast hitch plow,
(2) Int. 14' trailer plows, roller harrow, 4-section harrow,
9' Int. drag disk, J D subsoiler, spike harrow, PTO stalk
shredder, Ontario 16 disc grain drill on rubber, Farmall H
cornplanter, cultivator, front end loader, Int. 20 C, 2-row
mtd. cornpicker, metal bale drag, PTO fertilizer spinner,
Farmall Cub Continental gas engine, 2 pt disc.

MISCELLANEOUS: Baler twine, (2) Stewart cow clippers,
cow chains, hydraulic cylinders, tractor seeder, cement
mixer, wheels, cattle tattoo & syringes, hoof trimmers,
dehorner, assorted lumber, Craftsman elec. hack saw,
poultry equipment, wire, wheelbarrow, nuts & bolts,
plumbing tools, 36' wooden ext. ladder, oil tanks
w/pumps, (2) surge milkers, bag truck, elec. poultry
feather picker, lots of hand & misc. small farm tools, large
scrap pile.

ANTIQUES & COLLECTIBLES: (7) milk cans, antique
potato cutter, meat hooks, beam scale, galvanized tubs,
(2) elec. butter churns, Hobart #22 elec. meat grinder,
rollers & hooks for butchering, 2-man saws, chicken
coops, walking cultivators, block & tackle, 1,000 lb. plat-
form scale, hog troughs, Sears & DeLaval cream separa-
tors, mason jars, assorted dishes, plate, box lots of house
items, approx. 15 farm toys and many other misc. items
too numerous to mention.

REASON FOR AUCTION: Selling due to health problems
TERMS: Cash or PA check day of auction.

SALE FOR:

RICHARD & FERN FISHBURN



AUCTIONEER:
Kenneth P. Leiby
610-562-3929 - PA L#AU00541-L

**CONTRACTORS'
AUCTION**

FRIDAY, JUNE 2, 1995

At 10:00 A.M.

Finksburg, MD, Jct. of Rtes. 91 & 140
**DIRECTIONS: ON OLD WESTMINSTER
PIKE, FINKSBURG, MD. From 695 (Balt.
Beltway) take 795 to end at Rt. 140.
Continue on Rt. 140 to just before Jct of
140 and 91, make left at Twin Kiss.**

WILL BE SELLING: Crawler Loaders &
Dozers; Loader Backhoes; Rubber Tire
Loaders; Skid Steer Loaders; Forklifts; Air
Compressors; Farm Tractors; Road Tractors;
Dump Trucks; Cab & Chassis; Pickups & Cars;
Flatbeds; Dump Trailers; Equipment Tagalongs;
Lowboys; Storage & Many misc. contractors'
tools too numerous to mention.

IF INTERESTED IN CONSIGNING
PLEASE CONTACT:

Wolfe INDUSTRIAL AUCTIONS, INC.
(800) 443-9580 • (717) 334-0066
585 Martin Road, Gettysburg, Pennsylvania 17325

VA A.F. #128 VA DLR #8929

**HUMMEL FIGURINES
JEWELRY AUCTION**

3 Miles SE of Carrollton,
Oh. on SR 43

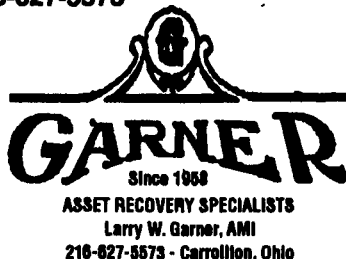
**Thurs., May 25, 1995
3:00 PM**

170 Hummel figurines including Full Bee,
Goebel, Stylized, Goebel Bee including She
Loves Me Not, Flute, Mandolin, Adoration,
Angel Joyous News, Baker, Band Leader,
Book Worm, Brother, Bust of Sister Hummel,
Chick Girl, Culprits, Eventide, For Father,
Friends, Playmates, Puppy Love, School Girls,
Shepherd's Boy, Stormy Weather, Supreme
Protection, Umbrella Boy, Writer, Wash Day,
Wayside Harmony, Which Hand, Worship,
Good Hunting, Goose Girl, Holy Child, Home
from Market, Little Fiddler #3, Little Goat
Herder, Little Hiker, Little Scholar, Merry Wan-
derer, Mother's Helper TM2, Out of Danger,
Flower Madonna #2, Angel Joyous w/Trumpet,
Soloist, Valentine Gift #5, Little Cellist #1, Way-
side Devotion #2. **JEWELRY:** 14 KT Wedding
Ring, 14 KT Horse Head Ring, (2) 14 KT Man's
Nugget Ring, 14 KT Lion Head Ring w/Ruby
Eyes, 14 KT Diamond Ring w/Rubies, 14 KT
Bracelet, 18 KT Tri-color 56.5 Gram Necklace
Plus Bracelet w/31.035 Grams, 14 KT Bracelet,
Pin & Cuff Links, 14 KT Men's Diamond Stud-
ded Bracelet, 14 KT Lady's Bracelet, 18 KT
Man's ID Bracelet, 14 KT Money Clip, Platinum
Pin w/1.8 Karat Center Stone (Total Diamonds
- 2.5 Karats) w/Sapphires, (2) Women's Dia-
mond Studded Bracelets w/Stones, Several
Sterling Silver Sets, 14 KT Gold Chains, 14 Pcs
Lady's Wrist Chains, (8) Pcs Herringbone
Chains, (3) Men's 14 KT Pocket Watch Chains,
18 KT Tri-color 56.5 Gram Necklace Plus
Bracelet w/31.035 Grams, 14 KT Bracelet
w/45.75 Grams, US National Sterling Silver
Service for 12 in Princess Elizabeth. **COINS:**
Rare \$10.00 Bill (Double Stamped); 1934
\$500.00 Bill; (3) \$20.00 Gold Pcs; (22) Liberty
Silver Dollars; Standing Liberty Quarter; Walk-
ing Liberty Half Dollar; (8) Uncirculated Roo-
sevelt Dimes; (4) Mercury Dimes; (2) Old Bar-
ber Dimes; Barber Quarters; (6) Uncirculated
Nickels; Others.

AUCTIONEER'S NOTE: There are approxi-
mately 170 Hummel Figurines and 95
Pieces Quality Jewelry Plus The Coins. All
of the Jewelry has been Examined and Cer-
tified by a Gemologist. This ad. only high-
lights the Quality of this Collection as Space
Limits our Listing Everything. Inspection
Starts at Noon Day of Auction in our Auc-
tion Gallery.

TERMS: Cash, Traveler's Checks or Certi-
fied Funds Only. Personal checks only if
known by our Auction Company or Accom-
panied with a Bank Letter Guaranteeing
Payment to Garner Auctioneers.

For information Call Garner Auctioneers
at 216-627-5573



Public Auction Register

Closing Date Monday 5:00 P.M.
of each week's publication

MON. JUNE 26 - 10AM
Prattsburg, NY Bates Muck
Farm, Inc. Complete Dis-
persal of Onion and Potato
Farming Equip. Pirrung
Aucts., Inc. 716-728-2520.

MON. JUNE 26 - 5PM
Prattsburg, NY. Quality
produce complete disper-

sal of forklifts and potato
and onion packing lines
including automatic bag-
gers. Pirrung Auctioneers
Inc. Wayland, NY.
716-728-2520.

THURS. JUNE 29 - 9AM
Real Estate, household

goods, antiques, riding
mower. Take South Duke
St. out of Millersville go
past Funk's farm market at
first cross road turn right on
Long Lane sale at 1206
Long Lane, Conestoga
Twp, Lanc. Co., Pa. By
Amos H. Groff, Robert E &
Jeffrey R. Martin, aucts.

JULY

SAT. JULY 1 - 9AM Real
estate, household goods &
antiques. Hunting license
from 1913 & up. At 192 W.
Main St., Leola, Upper Lea-
cock Twp, Lanc. Co., Pa.
By Clarence D. Sander,
Robert E & Jeffrey R. Mar-
tin, aucts.



PUBLIC AUCTION

of
VALUABLE REAL ESTATE

2 Bedroom Brick Rancher

Antiques, HH Goods, Furniture, Toys, PRR Memorabilia,
Shop Tools, Snow Blower, Riding Tractor

Sat., May 20, 1995 • 9 AM

Real Estate: 2 pm

8 Dorinda Drive, Christiana, PA. Dir: From Gap take Rt. 41 approx. 1 1/2 miles,
bear right on Newport Ave at Unimart. Approx. 1/2 mile at Y take Pine Street.
Make Left on Dorinda Drive.

REAL ESTATE

Beautiful 2 Bedroom Brick Rancher w/Attached 2 Car Garage (Auto Opener)
situated on a Lg. Lot 17,246 Sq. Ft w/180' M/L Road Frontage.

SOFTWOOD JELLY CUPBOARD, CHERRY DRY SINK, MARBLE TOP
TABLE W/DRAWER, WALNUT TABLE, OLD UPH. LOVE SEAT W/CARV-
ING, Lighted Curio Cabinet, Queen Anne Style Cherry Drop Leaf Coffee Table, Old
Highchair, 2 Maple Single Beds, Boxsprings & Mattresses, Maple Chest of Drawers,
Uph. Recliners & Chairs, Half Moon Uph. Sofa, Clothes Tree, Open Bookcase, Bar
Stools, 2 HALE SPINDLE PLANK BOTTOM CHAIRS, Needle Point Chair, Nice
Assort. of Tables and Chairs, Knee Hole Desk & Chair, Glass Tea Cart, Wooden Cabi-
net, Floor and Table Lamps, Sewing Machine w/Cabinet, Wall Mirror, OLD TRUNK,
Lawn Furniture, Cots, Fireplace Set, Rd. Coffee Table, Oak Arm Chair, Cane Seated
Chairs, Oak Ladder Back Chair w/Rush Seat, Maple Wall Table, Folding Table, Assort.
of Pictures & Frames - some Oak.

Maytag Washer, Hotpoint Dryer, Hotpoint Refrigerator/Freezer Comb., Microwave,
Sweeper, Dehumidifier, Sm. Appliances.

"Rose In The Snow" Goblets, Collection of English & Japan China

Cups & Saucers, Royal Albert Saucers, Wiltonware, X-mas

Hummel & Christiana Plate, CARNIVAL DISH W/ACORNS, CARNIVAL
PITCHER-FRUIT BOWL W/ROSES, SPODE CHINA CUP & SAUCER, Nice
Selection of Pressed - Pattern & Cut Glass, Wine Decanters, Fostoria Goblets, Nice
Selection of Crystal Stemware Glasses, Cow Creamer, SOFT PASTE CUP &
SAUCER, Iris Carnival Vase, Hain Bottle, Glass Basket, Pig Bank, Glass Egg, Bristol
Vase, 8 Place Setting Sterling Silverware, Nice Assort. of Milk Glass Pcs., Tureen, Rocky
Spring Park Figurine, Old Cake Stand w/ Matching Compote, Spooner and Celery
Stand, Silver Plated Tea Set, Assort. of Silver Plated Pcs., Enamel Tea Pot, Cruets, Salts,
China Egg, Ironstone Pitcher, 4 Pl. Setting Limoge & Haviland China w/Cream & Sug-
ar, Corning Coffee Pot, Gap Town Clock Plate, B & G Mother's Day Plate, Bottles, Red-
ware Jug, Hand Painted Tray, CI Skillet, Kitchen Utensils, Steak Knives, Collection of
Avon, Ruby Glass Basket, Punch Set, Frosted Glass Pitcher, Coin Silver Spoons, Old
Watches, Jewelry.

PRR Memorabilia - Calendars, Pins, First-Aid Kit, OLD PRR DIETZ READING
LAMP, PRR Lanterns, Lock, 3 Gal. Water Bucket, Flag Stand, Pc. Marker Plate, Framed
RR Postcards w/ Train Pictures, Portfolio of PRR Train Pictures, Maps, Christiana
RR Sign.

Toys - FIRE ENGINE, HUBLEY DUMP TRUCK W/HYD., HUBLEY
SCHOOL BUS, Match Box Cars, BATTERY ANTIQUE CAR & LOCOMO-
TIVE, '91 Hess Truck, '93 Hess Car, Exxon Toy Tanker, Games & Puzzles, Toy Pis-
tols, MXT Lifestyler 2808 Treadmill, Fire Ext., Bag Wagon, Kero. Stove, Croquet Set,
Quoits & Horseshoes, Luggage, Sun Rack, Tin Mailbox Bank, Sadirons, CI HITCH-
ING POST HORSE HEADS, Brass Spittoon, Christiana CI Bookends, Ice Pick,
Adv. Yardstick, Insulators, USA Bells, Ceramic Wall Horses, CI Brackets, Xmas Items,
Brass Whistle, Brass Candle Holders, Apple Peeler, Emperor Wall Clock w/Cherry
Case, Welby - Bentley Clocks, Deep Walnut Frame w/Oil Painting, Kero. Oil Lamp,
Wooden Ship Picture, Carved Wooden Ducks, Dovetailed Box, Books, Records, Ivory
Handle Button Hook, Craft Items, Old Cross Stitch Sampler, Linens & Bedding.

8 HP Ariens Snow Blower - Excellent Condition, Allis Chalmers Riding Tractor-3
Speed w/36" Mower Deck, Lawn Boy Self-Propelled Mower, Lawn Sweeper, Scott
Seeder, Wheelbarrow, Chain Saw, Craftsman Sander, Craftsman Heavy Duty Belt
Sander, Craftsman Skill Saw, Socket Set, Brace & Bits, Box & Open End Wrenches, B
& D Mitre Saw, Elec. Grinder, Brass Torch, Craftsman & Other Planes, Jig Saws, Tool
Box, B & D Trimmer, Solder Gun, Organizer, Misc. Hardware, Elec. Drills.

Nice Selection of Hand & Garden Tools, 16' & 20' Ext. Ladders, Log Chain, Sledge
Hammer, Crow Bars, Hand Pump for Drum, Hose, Ice Tongs, Coal Bucket, CI Wood
Stove, Step Ladders, Plump Hatchet, Husking Peg, Sprayer, Pruner.

Lots of Items too Numerous to Mention.

No Out-of-State Checks • Items Sold As Is
Not Responsible for Accidents • Food Served

TERMS: 10% down, balance on or before July 7, 1995.

ATTORNEY: Linda Kling
Wentz, Weaver & Kling

SALE FOR:
Frank & Martha DiGiamberdini
MILLER & SIEGRIST AUCTIONEERS
(717) 687-6857 AU-1723L