

**PUBLIC AUCTION**  
**FARM EQUIPMENT;**  
**DIESEL PICK UP;**  
**BASS BOAT**  
**Tues., May 23, 1995**  
**at 6 PM**  
 Midway between Fogelsville & Pleasant Corner, turn East off Rt. 100 onto Kistler Rd. at the Game Preserve sign. Go 2 miles to farm on left, Lehigh Co., Pa.  
**TRACTOR:** AC 200 diesel, 3 pt., wf, good rubber;  
**TILLAGE & PLANTING:** JD 550 semi mtd 5 bot hyd reset pl; Oliver 16' dual wheel transport disc; Pottsburg 10' transport disc; Dunham 10' roller harrow; JD 8250-21 single disc (Big Box) grain drill, w/grass seed attach, has new disc blades & feeder gears; LMC 3 pt tract ripper Herd 3 pt fert spreader; 200 gal weed sprayer;  
**HAYING:** MF 925 mower conditioner; Pequea 710 PTO hay tedder; Kuhn 3 pt rake; wheel type rake; NH mod 310 baler w/thrower; (2)-18' & (1) 16' wdn bale side wagon w/8 ton gears; Farmec 36' bale & c elev; King Wyse 24' bale & c elev;  
**Note: Old two horse wagon gear (needs help);**  
**COMBINE:** Int 315 s p w/cab, fan & hume reel;  
**PICK UP TRUCK:** 1983 Ford F-250 w/6.9 diesel super cab, air, 4 spd manual trans, 145K (looks good); 1973 Ford F-600 (as is) has good eng & hyd hoist;  
**BASS BOAT:** Glasstream 15' fiber glass w/60 hp Mariner eng, fish finder, troll motor & trailer  
**TERMS:** Cash or acceptable check  
 Refreshments Available  
**For: James Langmen**  
 P O Box 215 • Fogelsville PA 18051 • 410-395-8084 • License #AU001809-L  
**ZETTMAYER AUCTION**

**Public Auction Register**  
 Closing Date Monday 5:00 P.M.  
 of each week's publication

**FRI. JUNE 9 - 4:30PM** Hammondsport, NY Mr. and Mrs. Chester Garey Farm machinery and antiques. Pirrung Auctions. 716-728-2520.  
**FRI. JUNE 9 - 7PM Real Estate.** Located 2 miles W. of Honey Brook, 5 miles E. of Blue Ball turn S. off Rt. 322 on Churchtown Rd. at Amoco Gas Station, 2nd rd. right on Mast Rd. Salisbury Twp, Lanc. Co. Pa. By Margaret S. Mast, Robert E. & Jeffrey R. Martin, aucts.

**FRI. JUNE 9 - 7PM** Con- signment Dairy Sale Middleburg Livestock Auction Sales, Inc. Rt. 555 3 miles E. of Middleburg, Pa. 5 miles W. of Selinsgrove, Pa. To consign call Clarence Shirk 717-656-8793.  
**FRI. JUNE 9 & SAT. JUNE 10 - 8AM Real Estate,** Butcher Equipment, Tools, Antiques, Collectibles. Location: Bethel Twp. Berks Co. Bethel, PA. From I-78 Take Exit #3 South on Rt. 501 for 2 Mi. to Sale on

Right. From Rt. 501 in Myerstown, PA. Go North 8 Mi. to Sale Site Half Way Between Harrisburg and Allentown. Estate of Mary Batz. Auct. Dwight D. Miller.  
**SAT. JUNE 10 - 8AM Real Estate,** 1979 Dodge T - Tage Minneapolis Moline, Jet Star Two Tractor, Tools, Antiques, Collectibles, Household Goods, Farming and Butchering Equipment. Located Along

Red Rock Rd., RR #2, Berwick, Briar Creek Township, Columbia County, PA. Traveling North on Rt. 93 (Orangeville Hwy.) From Berwick, Turn Left on to Rittenhouse Mill Rd., Take 1st Right onto Red Rock Rd., 2nd Property on Left. Conditions by James L. & Elsie L. Mitchell. Marie's Auction Service.  
**SAT. JUNE 10 - 8:30AM,** Quilts, & wall hangings, lighthouse Rehabilitation Center, Samuel H. Stoltzfus, auct.  
**SAT. JUNE 10 - 8:30AM** Antiques, furniture, comforts & coverlet, postcards, adv. pcs. butcher items, cast iron toys, watch fobs, Ford modl A & T parts book of knowledge bank - badgers, Harley Davidson parts & access. At 376 Latimore Creek Rd., York Springs, Pa. On Rt. 15 go 7 miles S of Dillsburg, Pa. to Worley Fruit stand, turn right onto Mt. Rd. first rd. to right turn onto Latimore Creek Rd. go 3/4 mile to sale on left. Ivy N. Bankert, owner. Little Ike Eichelberger, auct.  
**SAT. JUNE 10 - 9AM** Construction equip, carpentry tools, building material & hardware, office equip. Held at the Horst Auction center at the corner of Rt. 322 & Durlach Rd. approx. 2 1/2 miles W. of Ephrata, Lanc. Co., Pa. Horst Aucts.

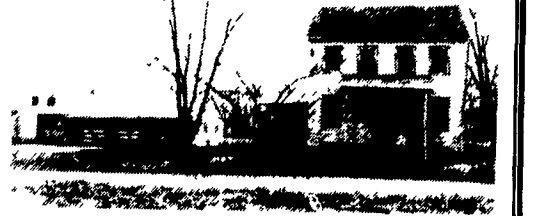
**PUBLIC AUCTION**  
**HIT & MISS ENGINES -**  
**SAWMILL - GENERATOR**  
**PLANTS - OLD CAR PARTS**  
**- VEHICLES - ANTIQUES**  
**"MEMORIAL DAY"**  
**MONDAY, MAY 29, 1995**  
**8:30 AM**  
**FREELAND, MARYLAND**  
 From North: Off Interstate 83 at PA & MD Line - Go west on Freeland Road, keep going straight, follow auction signs approx. 4 miles to auction on right.  
 From South: Int. 83N to Exit 31 (left on Middletown Road) 3.5 Mi. Rt. on Gore Mill Road, 1.5 Mi.  
 American 4 Head Block Sawmill, Waukesha 460 Power Unit, 4' Saw Blade, Extra Teeth for Saw Blade, Tooth Replacement Tool, Swedge, Lumb. Dolly & Rails, Sheppard Diesel 1 Cyl. Disassembled for Rest. Maytag Eng's, Lauson 1-1/2 HP, Famous 1-1/2 to 2-1/2 HP, Sturdy 2 HP, RM Wade, 2 Fairbanks Z's - 1 w/Compressor & Dishpan Flywheel on Tank & Wheels, Int. M 1-1/2 HP, Restored Empire 1 HP, Restored Schmidt Chilled Cyl. 3 HP, Restored Int. Tom Thumb Air Cool, Domestic 2 HP Side Shaft, Other Unrest. Eng's, Barco Jack Hammer, Pumper Air Cooled, Clinton Cast Iron Eng., New Clinton Parts, Motsinger Auto Sparker, Continental 4 Y. Over Head Valve Power Unit, Antiques Spark Plugs, Many Magnets, Antq. Spark Plug Cleaner, B/S Mod. 77 Pwr. Unit, 3"x13" BRS. Steam Whistle, Buzz Coils, 1 Very Old, Steam Boilers 9-1/2" x 32", one 24"x5" Vert. w/Fire Box, Much 32 Volt Stuff, Generators, Delco, Kohler, Alamo Sint., Willys Siv Valv., "1867 Oneco Carbon Arc Light Generator-New London, Conn." Water Turbines, 300 AMP Hobart Welder w/Pont. Eng. Early sun Model T Coil & Plug Tester, Model T Coils, Old Pressure Gauges, 20 Gal. S/Steel Steam Kettle, Many Gas Engine Manuals, Tractor Manuals, Auto Trade Journals, 1907 & UP, Sears & M/W Cats., Pop. Sci. & Mech. Magz., Luk. Oilers, Power Oilers, 25 KVA Army Field Gen. - Lerol Powered, Many Edison Batteries, 32V Bulbs, Orch. Spray & Trail., 2" Sludge Pump, Floor Sander, 10" Air Pwrd. Skilsaw, Cftsm. Tab. Saw, Toy Steam Engz., Antq. Bikes, Incl. Schwinn, Diston 2 Man 4' Chainsaw, Early 1-Many Chainsaw, Caterpillar 22 w/Blade, CAT 22 for Parts, J.D. LA. cult. & Plow, New Idea S/D Rake, Dump Rake, Hay Tedder, Lime Spreader, Fodder Chopper, Model A Ford Homemade Tractor, Salkie Plow, Clover Cutter, hand Drill Press, Cross Cut Saw, Souix Valve Grnder, Kinkade Garden Tractor, Jari Mower, Wheelbarrow Seeder, Mod. K Cletrac Parts, Carbide Bike Lamps, Garden Tiller, Front End Loaders for Tractors, Steel Wheels, Large Floor Model Drill Press, Power Hacksaw, Chandler & Farquar 16" Lathe w/4 Jaw Chuck 4' Bed, Many Acces., 3' Engineers Level, Solex Moped, Gas Pump, Wagon Makers Bandsaw & Planer, Clinton Powered Portable Conveyor, Chattanooga Twin F-50 Reversible Disc Plow, Restored 1908 Denny Improved Erickson Hot Air Pumping Engine 8" Piston.  
 '48 Jeep 4x4-P/UP, '77 Chev. Van, '54 Merc. 2-Dr. HT., '30 Pont., 2 Willys Aero Ace Bodies, 30's Int. P/U Parts, '63 Jeep C.O.E. w/Flatbed, Many Antique Car & Truck Tires, Victor Hd. Gasket Cabinet & Gaskets for 20's & 30's Cars, '37 Ford Hood, '37 Ford L.R. Fender, '39 Ford Radio, Model A Parts, Model T Coils, 20's Headlight Sets, Some Pierce Arrow & Locomobile Parts, 300 Asst. New Fan Belts, Model A Apple Gen., Antique Car Clocks, Speedos., & Gauges, Etc. Back to 1918, - 38, 39, & 40 Ford-Merc Dealers Strip films & Records, 20 Ctns. 2-3/4" x 16-1/2" 40 Grit Body File Paper, Many Other Old Car Parts, Windshield Assy. for Army Jeep, Old Car Gens. & Carbs., Old Car Wheels, '24 Olds Rearend & Spring, Worm Drive Rear, Early Car tools. O.N.T. Spool. Cab./Desk, Antique Sewing Machines, Rare Hand-Powered Portable Sewing Machine, Original Franklin Stove, Apple Peelers, Berkwith Pump Organ, Plank Bottom Chairs, Highchair, Pie Safe, Empire Chest of Drawers, Old Electric Hardware, Gas Iron, Copper w/Mach. Tub, Early Wringer Washer, Antique 1-Qt. Elec. I/C Freezer, Early Oliver & Other Typewriters, Brown's Mule Tob. Cutter, Old Mantle Clocks, Antique Radios, Tubes, headphones, Gooseneck Speakers & Parts, Tube Testers, Telegraph Keyes & Equip., Antique Cameras, Early 1900's 35MM Movie Projectors, Early Glass Slides, Some Early Bottles, Corn Sheller.  
**NOTE: This is a very unusual sale w/many old items of interest which were piled up at the time of writing sale list - come & see what all there is to sell! A collection of over 50 years of mechanical items, hundreds not on the sale bill.**  
**TERMS:** Cash or Good Check  
**SELLER:**  
**CLARENCE LINTZ**  
 20301 GORE MILL RD.  
 FREELAND, MD 21053  
 410-357-9838  
**AUCTION CONDUCTED BY:**  
**RENTZEL'S AUCTION SERVICE**  
 EMIGSVILLE, PA  
 717-784-6412  
 PA LIC. #761  
**CAMPERS OKAY - NO HOOK-UPS!**

**PUBLIC SALE**  
**OF**  
**RESTAURANT & CATERING**  
**EQUIP. AND SUPPLIES**  
**AUTO - VAN**  
**HOUSEHOLD GOODS**  
**TOOLS**  
**WED., MAY 24, 1995**  
**at 9:00 AM**  
 Loc 173B Pheasant Ridge, Lancaster, PA  
 Take Columbia Pike just west of Lancaster. Turn left onto Stone Mill Road. Turn right into Pheasant Ridge Mobile Home Park. Follow signs to parking area. Sale to be held at old farm house.  
 Food served  
 Sale by  
**Mr. and Mrs. Ronald Horn**  
 Howard E. Shaub, Inc. (717)464-3541  
 Auctioneer (AU-000831-L)


**OUTSTANDING AUCTION**  
**20 Acres of Prime Land w/Strong Stream**  
**ESTATE 2-DAY**  
**Fri., June 9th, 1995 at 5:00 P.M.**  
**Sat., June 10th, 1995 at 8:00 A.M.**  
**Real Estate, Butcher Equip., Tools, Antiques, Collectibles**  
**Estate of Mary A. Batz of Bethel, PA**  
 LOCATION: Bethel Twp. Berks Co. Bethel, Pa. from I-78 take exit #3 south on Rt. 501 for 2 miles to sale on right. From Rt. 501 in Myerstown, Pa. go north 8 miles to sale site. Half way between Harrisburg & Allentown, Pa.  
**REAL ESTATE:** Is zoned ag. with about 1000' rd. frontage, a 1 1/2 story house, two car block garage, a block barn, level land, all on 20 acres more or less. This property has potential for developing or a nice farmette. Upstairs has 2 B. Rms. & sewing rm., downstairs has kit/dining comb., living rm. bed rm, full bath. Oil hot water heat, well & septic. For an appointment of this very desirable property, call auctioneer at (717) 933-5736.  
**TERMS OF REAL ESTATE:** 10% down day of sale, Bal. in 60 days or less. Property will be offered at 12:00 noon, Sat., June 10th 1995.  
**Friday, June 9th at 5:00 PM:** Butcher kettles, two butcher furnaces, sausage stuffer, ladles, meat hooks, kettle hooks, lard press, bone saws, large amount of butcher knives, set of Wilson knives, signed meat cleavers, butcher bench, weather vane, large amount of hand tools, hammers, forks, shovels, signed hatchets, asst. lg. barn chisels, bk. planes, asst. axes, barn hinges, asst. lumber, BB guns, barn jacks, wood bits, hand saws, log chains, power tools, Dynamark 11 HP. 42" cut riding mower, JD #110 riding mower, lawn cart, sprinkling can, hammer handles, asst. hardware, bench grinder, dig. Iron, asst. wrenches, ball bats, tool boxes, butcher kettle stands, & much more.  
**Sat., June 10th at 8:00 AM:** Hand painted plank bottom chairs, Empire chest, shelf clock, oak claw feet round table, jelly cupboard, buttons asst., crocks, kero lamp, Gruber wooden box, butter churn, about 20 pocket knives, asst. quilt tops, 4 pcs. modern pine bed rm. suite, old apple cookie-jar, asst. pocket watches, old Coke poster, child's oak roll top desk, old rocker, chest of drawers, old regulator clock, blanket chest: Rem. 22 rifle, Sears 20 ga S. gun, asst. jewelry, Flow Blue pcs., arrow hds., carnival pcs., green depression, press glass, old enameled ice box/freezer, GE washer, Hotpoint dryer, GE chest freezer, GE ref/freezer, side by side ref/freezer, towels & linens, asst. glassware, sm. child's rocker, marbles, old hat pin, German Bible, comforts, C.I. skillet, & much more.  
**NICE 1979 BONNEVILLE PONTIAC,** 57,000 miles, loaded  
**TERMS:** Cash or PA Check  
**AUCTIONEERS NOTE:** This auction has something for everybody, a lot of nice things to be sold. Come spend the day at a good old country auction.  
 Executor **James E. Batz**  
 Executrix **Blanche A. Brubaker**  
 Esquire **David Batdorf**  
  
**Auctioneer**  
**Dwight D. Miller**  
**AU002414L**  
**Call (717) 933-5736**  
**FOOD BY WOMEN FELLOWSHIP LITTLE SWATARA CHURCH OF CHRIST**

**PUBLIC AUCTION**  
**VALUABLE REAL ESTATE**  
**2 1/2 STORY 5 BDRM. HOUSE**  
**3 CAR GARAGE**  
**1.7 ACRE TRACT**  
**PERSONAL PROPERTY -**  
**ANTIQUES**  
**FARMALL SUPER C TRACTOR**  
**& 1982 CHEV. MALIBU**  
**SAT., MAY 27, 1995**  
**Auction Time 9 AM**  
**Real Estate 1 PM**

LOCATION: 657 Fivepointville Rd., Denver (Fivepointville). From Ephrata Rt. 272 North to Rt. 897. Turn right onto Rt. 897 South to Fivepointville. Turn right onto Fivepointville Rd. go approx. 1 mi. to property on left. Brecknock Twp., Lanc. Co.



Real Estate consists of frame 2 1/2 story dwelling w/1st floor eat-in kitchen, dining area, living rm., parlor, & large heated sun porch & full bath. 2nd floor has 5 bedrooms, full attic storage & partial bsmt. Gas spare heat, on site well & public sewer. Outbldgs include frame 3 car garage w/attached frame barn. All on large 1.74 acre lot w/plenty of garden area & small orchard. Note: This is an ideal rural property, great for family Zoned Agricultural. Inspection of Real Estate by appointment or open house on Sats., May 13 & 20 from 1-4 PM. For terms & details call Auctioneers at 717-445-4309 or 717-733-1006.

**Personal Property - Antiques - Furniture**  
 Dep 3 pc Bedrm. Suite; Empire Bureau, Unusual Lg. Blanket Chest w/Early Dovetailing; Pinned Washstand; Dresser; Nite Stand; 2 Metal (Wardrobes); (5) Half Spindle Plank Bottom Chairs; 4 Cane Seat Chairs; Wooden Rocker; Flower Stands; Sm. Crib; Highchair; Fainting Couch; (2) Child's Rockers, Oak Drop Leaf Ext. Table, End Tables; Upholstered Rockers; China Closet; Elect. Dryer; 2 Gas Stoves, Chest Freezer; Refrigerator; Toaster Microwave; 3 Wooden Porch Rockers; Carnival Glassware & Others; Salts, S&P Shakers; Blue 2 Qt. Canning Jars; Pitcher & Bowl Set, Crocks; 2 Kero Lamps; Min. Iron & Trivet, Copper Kettle; Butcher Scale; Strawberry Crates; Bu. Crates, Wooden Barrel; Wooden Wheelbarrow; Wooden Tool Chest; Corn Chopper; Tobacco Spears; Tobacco Sizing Box, Wooden Tub, 3 Sleds; Pig Trough; Wooden Child's Wagons; Coal Bucket, Sprinkling Can; Wooden Spools; Table & Floor Lamps; Plants; Chalk Board; SS Kettles, New Stanley Silverware w/Chest; Tupperware; Games; Carpet Runners; New Dahlia quilt; Blankets; Comforts; Century Carseat.  
**1984 Farmall Super C Tractor:** 1982 Chev Malibu Classic Blk., 4 Dr., V6, AC, Troy-Bilt Horse 8 HP Tiller; Tanaka Weed Eater, Simplicity 3108 - 8 HP Riding Mower, 2 Hahn Lawn Mowers, Wheelbarrow, 3 Hyd. Jacks, Misc. Hand Tools plus many other items too numerous to mention.  
**NOTE:** The Redcays are relocating & are selling the above items & their Real Estate at Auction Starting w/ sm. items, household goods, furniture. Real Estate at 1 PM followed by car & tractor. Terms are cash or good check. Food stand  
 Terms by  
**HENRY N. & LIZZIE Z. REDCAY**  
 717-445-6447  
 Ken Howard, Esquire  
 Auction conducted by  
 Randal Kline, Lloyd Kreider,  
 Roy Good Jr., Auctioneers AU2116L  
 717-445-4309  
  
**KLING, KREIDER & GOOD**  
**AUCTIONEERS**