

**National Grain Market**

ST. JOSEPH, MO  
MAY 10, 1995

Cash bids for wheat were mixed, mostly lower due to profit taking on the board and weather uncertainties. Corn bids were higher on continued planting delays and more wet weather forecast for Corn Belt areas. Support was noted in bean pits today in anticipation of tomorrow's USDA's Supply/Demand report and the substantial export purchase of beans from Taiwan and meal to South Korea. Wheat mostly unchanged to 2 cents lower except Kansas City 5 cents higher. Corn 1 to 2 cents higher. Sorghum 1 to 3 cents higher. Soybeans 1 to 5 cents higher.

Wheat bids turned mostly lower, despite continued setbacks in spring wheat planting and a slight improvement in export demand. Pressured stemmed from light fund selling on the board and cautious trading ahead of USDA's Crop Production report due out Thursday morning. Concerns are growing over too much moisture in soft red winter wheat areas causing disease.

Slight gains were made in corn pits due to ongoing delays in planting and continued wet weather forecast for Midwest regions. Light fund buying noted, also underpinned bids.

Bean bids climbed higher in reaction to good export demand from Taiwan and weather concerns. Traders expect USDA will show a cut the 94/95 carryout estimate in tomorrow's Supply/Demand report.

Export demand:  
Purchaser Commodity Tonnage Delivery date  
Morocco - EEP Hard Amber Durum 30,000 May/June  
Sri Lanka - EEP Soft White 50,000 May  
Sub-Saharan Africa - EEP N/Dn Spring 11,000 May/June  
Former Soviet Union - EEP Wheat Flour 2,000 June/Aug  
CCC Hard Red Winter 5,000 June  
CCC Spring 2,080 June  
Taiwan Soybeans 108,000 July/Aug  
South Korea Soybean Meal 30,000 1995  
Total: Wheat 98,080 tonnes. Wheat flour 2,000 tonnes. Soybeans 108,000 tonnes. Soybean meal 30,000 tonnes.

Date Change Year ago  
Truck bids: 05/10/95 05/09/95 05/11/94  
Wheat:  
Kansas City 4.05-4.10 unch-up 5 3.54-3.55  
Minneapolis 4.40 dn 2 4.81 1/2  
Portland 4.36-4.38 dn 1-unch 3.72-3.76  
St. Louis 3.55-3.59 dn 2-1 3.15-3.18  
Com, U.S. No 2 Yellow:  
Kansas City 2.59-2.60 unch 2.71-2.73  
Minneapolis 2.44 1/4 dn 1/4 2.53 1/2  
Southern Iowa 2.53-2.56 up 1-2 2.59-2.61  
Omaha 2.46-2.48 up 1 2.55-2.56  
Soybeans, No 1 Yellow:  
Kansas City 5.62-5.64 up 5-3 6.80-6.83  
Minneapolis 5.50 3/4 up 3 1/2 6.62  
Southern Iowa 5.59-5.60 up 4-1 6.73-6.75  
Cen IL Processors 5.62 3/4-5.78 3/4 up 1/2-2 1/2 6.76-6.82  
\*Truck bids for Kansas City, US No 1 hard red winter wheat, ordinary protein. Minneapolis, US No 1 dark northern spring wheat, 14 Percent protein. Portland, No 1 soft white wheat, St. Louis, No 2 soft red winter wheat.  
Futures close:  
Kansas City (July) Wheat 3.64 1/2 dn 1/4 3.24 3/4  
Minneapolis (July) Wheat 3.85 dn 2 3.41 1/2  
Chicago (July) Wheat 3.59 3/4 dn 1/2 3.21 3/4  
Chicago (July) Corn 2.58 1/4 up 3/4 2.58 1/2  
Chicago (July) Soybeans 5.73 3/4 up 2 1/2 6.67  
Export Bids: Barge or rail, Port of New Orleans or North Texas Gulf.  
No 1 Hard Red Winter Wheat, Ordinary Protein 4.22 1/2 dn 1/4 3.84 3/4  
No 2 Soft Red Winter 3.85 3/4-3.88 3/4 dn 1/2 3.40-3.42  
No 2 Yellow Corn 2.84 1/4-2.85 1/4 up 3/4-1 1/4 2.74-2.74 1/2  
No 2 Yellow Sorghum  
Rail 4.86 up 1 4.71  
Barge 4.95-4.99 up 3 4.78  
No 1 Yellow Soybeans 5.93 3/4-5.94 3/4 up 2-1 1/2 6.92 1/2-6.93  
Source: USDA-Missouri Dept of Ag Market News, St Joseph, MO  
Belinda Bird 816 238 0678 15:00c

**Pa. Grain**

Monday, May 8, 1995  
Report supplied by PDA  
COMPARED TO LAST MONDAY'S MARKET FOR SOUTHEASTERN,

CENTRAL, AND SOUTH CENTRAL PA: CORN STEADY TO .10 HIGHER, WHEAT UNEVEN, MOSTLY STEADY TO STRONG, BARLEY UNEVEN, MOSTLY STEADY TO WEAK, OATS UNEVENLY STEADY, SOYBEANS UNEVEN, MOSTLY STEADY TO .05 HIGHER, EAR CORN STEADY TO 5.00 HIGHER.

SOUTHEASTERN PENNSYLVANIA CORN NO. 2-Y RANGE 2.63-2.91, AVERAGE 2.78, CONTRACT FOR HARVEST 2.62-2.78; WHEAT NO. 2 RANGE 3.50-3.83, AVERAGE 3.58, CONTRACT FOR HARVEST 3.33-3.58; BARLEY NO. 3 RANGE 1.70-1.80, AVERAGE 1.75, CONTRACT FOR HARVEST 1.50-1.60; OATS NO. 2 RANGE 1.50-1.80, AVERAGE 1.62, CONTRACT FOR HARVEST 1.50; SOYBEANS NO. 1 RANGE 5.40-5.75, AVERAGE 5.58, CONTRACT FOR HARVEST 5.43-5.70; FEW REPORTED PER HUNDREDWEIGHT BUCKWHEAT CONTRACT FOR HARVEST 10.90; EAR CORN RANGE 75.00-85.00, AVERAGE 79.13.

SOUTH CENTRAL PENNSYLVANIA CORN NO. 2-Y RANGE 2.60-2.80,

AVERAGE 2.70; WHEAT NO. 2 RANGE 3.20-3.40 FEW REPORTED 3.59, AVERAGE 3.37; BARLEY NO. 3 RANGE 1.60-1.80, AVERAGE 1.69; OATS NO. 2 RANGE 1.45-1.75, AVERAGE 1.55; SOYBEANS NO. 1 RANGE 5.25-5.50, AVERAGE 5.43; EAR CORN RANGE 65.00-80.00, AVERAGE 71.43.

SOUTHEASTERN, CENTRAL & SOUTH CENTRAL SUMMARY CORN NO. 2-Y RANGE 2.50-2.91, AVERAGE 2.71; WHEAT NO. 2 RANGE 3.20-3.83, AVERAGE 3.48; BARLEY NO. 3 RANGE 1.65-1.85, AVERAGE 1.74; OATS NO. 2 RANGE 1.45-1.80, AVERAGE 1.61; SOYBEANS NO. 1 RANGE 5.30-5.75, AVERAGE 5.51; EAR CORN RANGE 65.00-85.00, AVERAGE 74.43.

CENTRAL PENNSYLVANIA CORN NO. 2-Y RANGE 2.50-2.83, AVERAGE 2.59; WHEAT NO. 2 RANGE 3.20-3.52 FEW REPORTED 3.80, AVERAGE 3.42; BARLEY NO. 3 RANGE 1.70-1.90, AVERAGE 1.74; OATS NO. 2

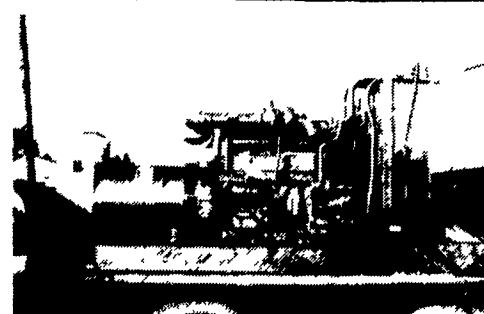
RANGE 1.40-1.80, AVERAGE 1.63; SOYBEANS NO. 1 RANGE 5.30-5.55, AVERAGE 5.34; EAR CORN RANGE 66.00-70.00 FEW REPORTED 55.00, AVERAGE 66.17.

WESTERN PENNSYLVANIA CORN NO. 2-Y RANGE 2.26-2.66, AVERAGE 2.50; WHEAT NO. 2 RANGE 3.30-3.46, AVERAGE 3.39; BARLEY NO. 3 RANGE FEW REPORTED 1.77, AVERAGE 1.77; OATS NO. 2 RANGE 1.25-1.80, AVERAGE 1.54; SOYBEANS NO. 1 AVERAGE 5.13-5.30, AVERAGE 5.22; EAR CORN RANGE 54.00-55.00, AVERAGE 54.50.

MONTH AGO CORN NO. 2-Y 2.63; WHEAT NO. 2 3.46; BARLEY NO. 3 1.81; OATS NO. 2 1.63; SOYBEANS NO. 1 5.58; EAR CORN 71.18.

YEAR AGO CORN NO. 2-Y 3.05; WHEAT NO. 2 3.36; BARLEY NO. 3 2.44; OATS NO. 2 1.70; SOYBEANS NO. 1 6.63; EAR CORN 87.93.

**MARTIN MACHINERY**



**GENERATORS**

Sales ★ Service ★ Rentals  
\* Complete Generator Systems  
\* PTO \* Portables \* 2-1600 KW  
"We Service It If You Have It And Sell It If You Need It"

34 W. Mohler Church Rd.  
Ephrata, PA 17522

Tel: 717-738-0300  
Fax: 717-738-4329

**THE Scoular COMPANY**

**BUYING AND SELLING  
SOFT RED WHEAT  
WHITE WHEAT  
AND CORN**

Picked Up and Delivered Bids Available  
Prices Quoted for Spot or Future Delivery

**PROMPT PAYMENT**

**ASK FOR  
BILL KRUEGER  
(800) 487-1474**

**WE WANT TO BUY  
YOUR GRAIN**

**A & C Diffenbach Auction Inc.**

100 West Jackson Street • New Holland, Pennsylvania 17557  
Office: (717) 355-7253 • FAX: (717) 355-9547

**HAY & GRAIN SALE EVERY MONDAY - 10:00 A.M.**

TUES	MAY 23	QUILT, CRAFT & BUGGIES	9:00 AM
WED	MAY 24	QUILT & CRAFT	9:00 AM
WED	JUNE 7	WINROSS TRUCKS & TOYS	6:30 PM
FRI	JUNE 9	FARM EQUIP, TRACTORS & FARM SUPPLIES	9:00 AM

EQUIPPED FOR AN AUCTION AT YOUR PLACE OR OURS  
ALAN DIFFENBACH AUCT. - AU2258-L



**Increase  
Your Milk  
PROFITS**

with the  
**Mount  
Joy  
Coop**

Excellent  
overall price

**653-5431**

\* Excellent  
Trucking

Direct  
Deposit

\* Over 60  
years of  
service

**Special Horse Sale Fri., May 19 7:00 PM** **NEW HOLLAND SALES STABLES INC. THE ACTION AUCTION** **Registered Heifer Sale Sat. June 3 10 AM**

**Livestock Is Our Only Business**

**MONDAY**



**SLAUGHTER HOGS  
EARLY BIRD HOG SALE  
7:30 A.M.**

Sell Your Hogs At New Holland Sales Stables, Inc.  
See them weighed, sold and pickup your check.



**10:00 A.M.  
HORSES  
MULES**



**1:30 P.M.  
BEEF SALE  
SHEEP  
GOATS  
CALVES**



**THURSDAY**

**Beef Auction 10:00 A.M.**



**BULLS, STEERS,  
BEEF COWS**



**1:00 P.M.  
STOCKERS & FEEDERS**



**11:30 A.M.  
SHEEP  
GOATS  
CALVES**



**WEDNESDAY**

**HEIFER SALE 11:00 A.M.  
COW SALE 12:00 NOON**

**HEIFERS  
BULLS**



**DAIRY  
COWS**

We have the usual run of 50 to 100 Heifers, all ages. Loads of fresh cows and springers from our regular shippers. Also some local fresh cows and springers.

**1:30 P.M.  
FEEDER PIG SALE**



Pigs are accepted after 8:30 A.M. State graded from 8 to 12 Dairy Barn and Feeder Pig Barn are cleaned and disinfected weekly for your protection.

**NEW HOLLAND SALES STABLES, INC.**

12 Miles East of Lancaster Off Route 23, New Holland, Penna.

**MANAGERS**

Norman & David Kolb - 717-397-5538

**Field Representatives**

Luke Eberly - 215-267-6608 738-1865  
Homer Eberly - 215-267-3047  
Ron Ranck - 717-656-9849

**Sale Barn Office Manager**

Roger Floyd - 717-354-4341  
FAX #717-355-0706

**Order Buyer**

Paul Good - 215-445-6662