

Soil Stewardship Week

(Continued from Page A34)

"The Catoctin and Frederick Soil Conservation districts are unique in that they are the only districts in the state based on watersheds and historical background," said Dawn Early, district manager for both districts. The Catoctin watershed is mountainous, and thus has characteristically steep slopes and different soils. It is the second oldest district in the state, established in 1939. The Frederick District was created in 1944, when the Monocacy watershed was split into the Carroll and Frederick districts.

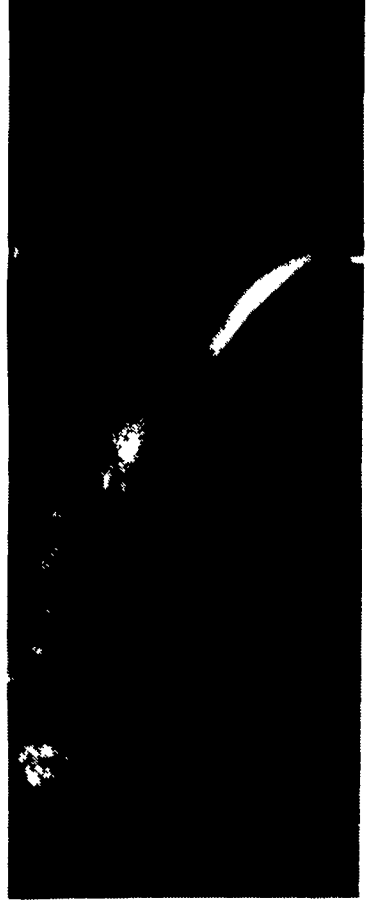
David O'Hara, winner of the Speak Off contest, presented his talk on soil and water conservation at the luncheon. Closing remarks were given by Jesse Burall, chairman of the Frederick Soil Conservation District.

The board of supervisors for the Catoctin district consists of Daniel C. Poole, chairman; John Summers, vice chairman; Fred H. Beachley, treasurer; Wilmer H. Keller, assistant treasurer; Richard McBride, supervisor; and G. Paul Edwards, Steve Leatherman, and



David O'Hara

K. Scott Hood, associates. For the Frederick district, the board is made up of Jesse Burall, chairman; Roger Troxell, vice chairman; C. Ellis Hood, treasurer; George "Nick" Nicholson, Jr., assistant treasurer; Franklin Gladhill, supervisor; and Noel Dingman and Dwight Dotterer, associates. Sarah Holter is the president for the Catoctin/Frederick Auxiliary.



Richard R. Holter, Sr., right, is presented with the Distinguished Service Award by Daniel C. Poole. Holter retired last year after 31 years as supervisor for the Catoctin Soil Conservation District.

Average Farm Feed Costs For Handy Reference

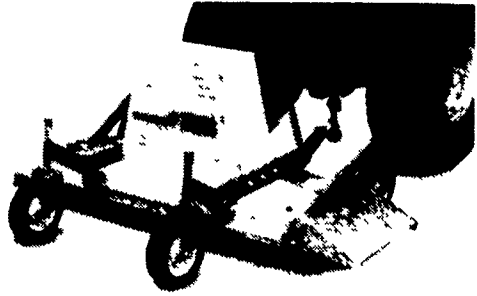
To help farmers across the state to have handy reference of commodity input costs in their feeding operations for DHIA record sheets or to develop livestock feed cost data, here's last week's average costs of various ingredients as compiled from regional reports across the state of Pennsylvania. Remember these are averages so you will need to adjust your figures

up or down according to your location and the quality of your crop.
 Corn, No. 2y - 2.58 bu. 4.62 cwt.
 Wheat, No. 2 - 3.42 bu. 5.70 cwt.
 Barley, No. 3 - 1.79 bu. 3.82 cwt.
 Oats, No. 2 - 1.58 bu. 4.93 cwt.
 Soybeans, No. 1 - 5.45 bu. 9.10 cwt.
 Ear Corn 63.65 ton 3.18 cwt.
 Alfalfa Hay - 91.25 ton 4.56 cwt.
 Mixed Hay - 85.50 ton 4.28 cwt.
 Timothy Hay - 87.00 ton 4.35 cwt.

MILK AMERICA'S HEALTH KICK

WOODS

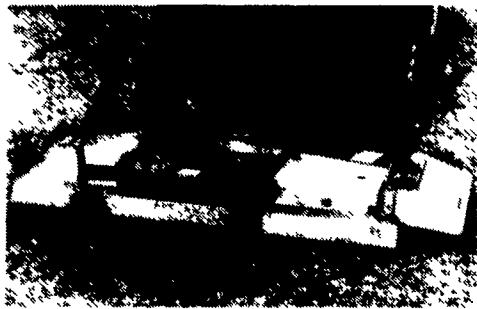
REARMOUNT MOWERS



Model RM 360

Choice of Models

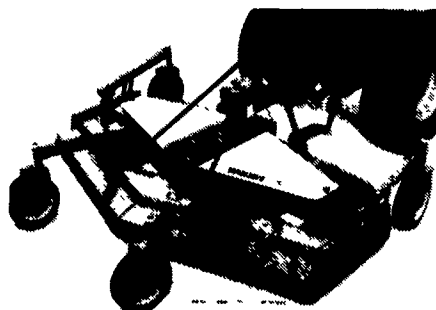
Only Woods offers the choice of belt-driven or gear over belt drive models in 5 ft. to 7 1/2 ft. cutting widths.



Model RM 660

Woods set the standard for rearmount mowers in 1971 and today we still are the standard setter!

Woods vee-forward deck design features a high-velocity air tunnel that moves cut material out fast and distributes it evenly. Tunnel and deck are one piece which adds strength by eliminating the need for high stress weld areas.



Model 990

If your tractor is in the 16 to 50 horsepower range, there's a new Woods rearmount lawn mower for you. And like all Woods products, your Woods rearmount mower will be "worth more in the long run." We've been around since 1947 and during that time Woods has been keeping promises - and making mowers that keep on working years after most others "can't cut it."

WOODS WOODS - DuAL **WOODS** ALLOWAY **WOODS** - GANNON

... come in for a demonstration

R.S. HOLLINGER & SON, INC.
 Mountville, PA
 717-285-4538

BANGOR IMPLEMENT
 Bangor, PA
 215-588-5924

ECKROTH BROS. FARM EQUIPMENT
 New Ringgold, PA
 717-943-2131

THOMAS POWER EQUIPMENT
 Avondale, PA
 215-288-2181

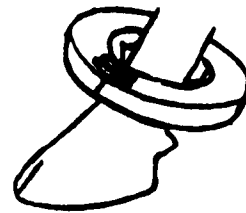
PIPERVILLE GARDEN CENTER
 Pipersville, PA
 215-766-0414

NESLEY EQUIPMENT CO.
 Pottstown, PA
 215-469-6391

D.W. OGG EQUIPMENT CO.
 Frederick, MD
 301-473-4250
 Westminster, MD
 410-848-34585

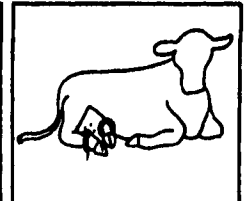
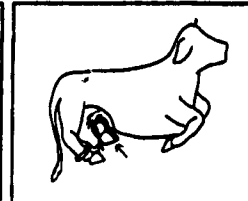
MILK. IT DOES A BODY GOOD.

THE END OF TEAT INJURY



"NO SECRETS"
The "TEAT SAVER"
 pushes the udder & teat away from the dew claw. Apply two weeks prior to freshening.

This product can be purchased at your local Farm Stores or Feed Mills or by contacting your local animal health centers.



DEALER INQUIRIES WELCOME!

The "TEATSAVER" supplied by
 J.B. Supply Ltd.
 Chetek Wisconsin 54728
 For Information Phone (715) 924-2136



"Atlantic Dairy Cooperative's youth programs provided us with a beneficial learning experience. We learned more about co-ops, developed our leadership skills and made new friends."

—George Inhof and sister, Theresa Spring City, PA

ADC Is the Place To Be

Member education and youth programs - the outstanding benefits that George and Theresa Inhof refer to - are among the strengths of the premier dairy cooperative in the region.

Atlantic Dairy Cooperative has a 78-year history of excellent service to its members. Financially strong, ADC guarantees a market for all member milk and excels in maximizing returns. ADC is a leader in providing equity payments, quality bonuses and over-order premiums to members.

Nearly 4,000 dairy farmers agree that "ADC is the Place to Be." For free information on how you can secure the future of your dairy farm operation, write or call:

Atlantic Dairy Cooperative
 1225 Industrial Highway
 Southampton, PA 18966
 1-800-645-MILK

