

WENGERS FARM MACHINERY, INC.

ROUTE 501 - 1 MILE SOUTH OF MYERSTOWN, PA.

Ask For:
Dave Wenger
Or
Alvin Martin

717-866-2135

Mailing Address: 814 South College Avenue
Myerstown, PA 17067

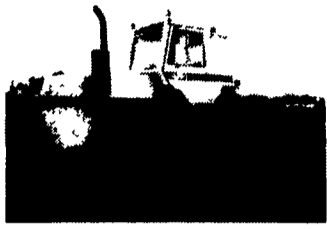
HOURS
MON-FRI 7:30-5
SAT 7:30-NOON



"Lease Purchase Available"



John Deere 4030 w/Canopy, Syncro-Range, 80 HP, Nice



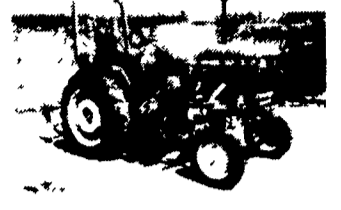
Case 4490 4WD w/3Pt. & PTO, New 20.8x34 Tires, 4470 Hours, Very Nice Clean Original, 175 HP, 4 Remotes



Farmall Super C, New Tires, New Paint, Cultivators Available



International 424 Gas with Power Steering, 1 Remote, 3 pt. PTO, Wheel Weights, Good Condition, 37 HP



John Deere 900 HC w/Cultivator and Side Dresser, Rollbar, 3 Pt. PTO, 25 HP Diesel, 1614 Hours



1973 International 1066 18.4x38 Radials, Dual Remotes, 540/1000 PTO, Very Solid 125 HP



John Deere 675B Skid Steer, 44 HP, Yanmar Diesel, 5' Bucket, 1576 Hours



Ford CL-20 Skid Steer, 25 HP Onan Gas, 46" Bucket, 800 Lb. Capacity



1984 Ford 6610 w/Terrain King 4' Hammer Knife Mower, PTO Pump, Oil Coolers, 16.9x34 Duals, Approx. 20' Hydraulic Arm, 72 HP



1968 John Deere 4020, Factory Cab, Syncro-Range, Front and Rear Weights, New 18.4x34 Tires, 1 Remote, 4314 Gentle Hours, Very Expensive



John Deere 4020, Dual Remotes, Front and Rear Weights, 18.4x34 Tires, Syncro-Range Trans. 95 HP



1979 White 2-155 4536 Hours, 20.8x38, Weights, Triple Remotes, 1000 PTO, A Good 157 HP Tractor



1976 International 986 Rollbar w/Enclosure, 3900 Hours, 18.4x38 Radials, Dual Remotes, 540/1000 PTO, 105 HP



1977 International 986 Front and Rear Weights, 2394 Hours, Dual Remotes, 540/1000 PTO Immaculate 105 HP Tractor, If You Are Price Shopping This is Not The One For You!



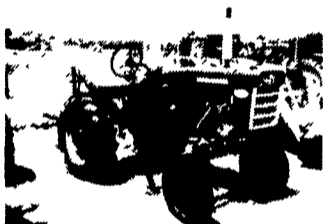
1980 International 1066 Front and Rear Weights, 3974 Hours, 18.4x38 Radials, Dual Remotes, 540/1000 PTO, Very Nice 132 HP



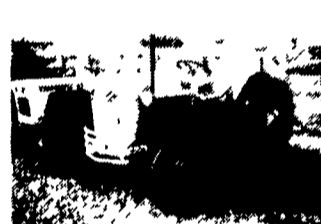
1978 International 886, Dual Remotes, 540/1000 PTO, 1974 Hours, New 16.9x38 Tires, Rear Wheel Weights, 90 HP



1972 JD 3020 Diesel, Syncro-Range, 1 Remote, Front Weights, 90% Tires, Side Console, 70 HP



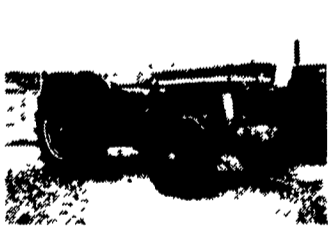
Farmall 140 w/Cultivator, Runs Great, Good Tires, New Paint, 24 HP Gas Engine



Ford NAA "Golden Jubilee" An Original Tractor With New Tires, Runs and Works The Best, 30 HP



Ford 2810 4WD w/776F Loader, Low Hours, Series II, 32 HP Diesel



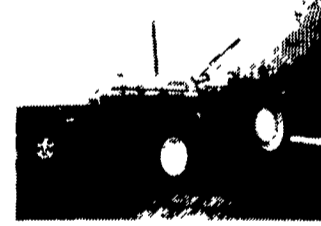
Massey Ferguson 135 Gas, 3 Pt. Hitch, PTO, Front and Rear Wheel Weights, 35 HP



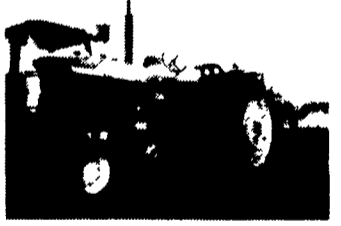
Kubota L245H w/Cultivator And Side Dresser Attachment, 3 Pt. Hitch and PTO, 24 HP Diesel



Case 630 Diesel, 3 Pt. Hitch, PTO, Power Steering, A Nice 50 HP Tractor



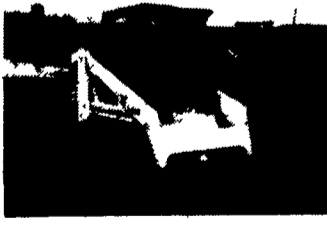
John Deere 2150, Very Nice, 50 HP Diesel, Remote Hydraulics, Independent PTO



John Deere 2510 Gas, Front And Rear Weights, Like New Tires, Very Exceptional Quality, 54 HP



John Deere 2840 w/Dunham 22 Loader, Dual Remotes, 18.4x38 Tires, Very Good 80 HP, We Will Separate The Loader



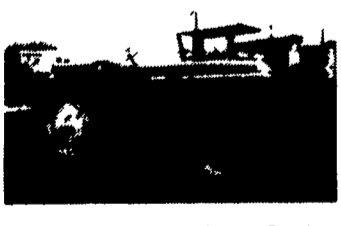
1983 Bobcat 743, Kubota 36 Hp Diesel, 5' Bucket



International 185 Cub LoBoy w/5' Mower Deck, Turf Tires



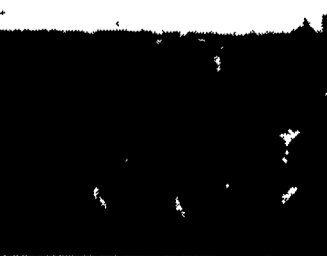
Case 2290 w/Mud Hog Front Wheel Assist, Runs and Drives, But Has Been Crashed, To Be Sold As-Is



John Deere 4230 Open Station, Front and Rear Weights, 18.4x38 Tires, Quad-Range, 100 HP



1972 JD 4020 Console, Syncro, 2 Remotes, Factory Cab, Weights, New 18.4x34 Tires, Sharp, 95 HP



1985 New Holland L455, 28 HP Kubota diesel, 1200 lb. capacity, 5' bucket, 1582 HR



Allis Chalmers 7060, Black Belly, Powershift, 20.8x38 Tires, Full Weights, 160 HP



Farmall H (sharp) Farmall M w/live hyd., wts., (sharp) fine examples of Farmalls



1990 Case IH 5120 Maxum, 18.4x34, 2 Remotes, Optional Creeper Gear Transmission, Only 235 Hours, Like New 80 HP