

**WIDE FRONT OIL 560**

- 311 NH baler, nice
- 1066 w/Cab & Air, TA, axle duals, ready to go
- 77 Ford F250 4x4 pickup w/John Blue 400 gal. sprayer w/foam marker
- Farmall F20
- Various sizes used tires & rims
- IH 5100 Soybean special, 18x7

Parts: 350D W/PS, F20, 560, T6 Crawler, 460, 450D, H

**John Thompson**  
302/492-1186

**BATTERIES**

**\$25-\$35**

Let Us Recondition your old battery and save over 50%

**We Buy Old Batteries PowerPro Battery**

1124 Elizabeth Ave. Beside Lancaster Stockyard (717)399-9545

Bale Basket  
New Never Used  
Delivery Available

**\$1795.<sup>00</sup>**  
315-893-7209

Very Large Inventory of JD Implement Parts from 50 Year Old JD Dealer

**Must Sell \$2,000 OBO**

717-866-7066  
NO TRACTOR PARTS

Tillage, Forage, and Hay Equipment. Medium Dairy going out of Business. (610)681-4134.

MF 1085 w/roll bar, 18.4x38, good condition, \$6900. 814/358-2886.

**PAVEMENT BREAKER**  
Arrow SP, gas, will drive fence post, \$2,500. w/extra machine for parts. 410-833-9091



**NEW HOLLAND**

**FORD TRACTORS**  
Used 1710 4WD  
Used 1210, 4 WD w/New Front Blade  
Used NAA, w/Loader  
Used 8N  
Used 9N

**NEW HOLLAND**  
New 650 Round Baler  
New 40 Forage Blower  
New 816 Forage Box  
Used 770 harvester  
Used 310 baler w/thrower  
Used 469 Haybine  
Used 442 Disc Mower  
**OTHER EQUIPMENT**  
New Kuhn FC300 Disk Mower Conditioner  
New Ford 140 3x16" Moldboard Plow  
New Ford 133 High Clearance Chisel Plow  
New Ford 152 5Bx16" Auto Reset Plow  
Used Ford 142 4Bx16" Auto Reset Plow  
Used Ford 142 3Bx16" Auto Reset Plow

**Sweigard Bros. Inc.**  
3882 Peters Mtn. Rd. Halifax, PA 17032  
**717-896-3414**  
Since 1937

**2020 JD DIESEL +TRACTOR**

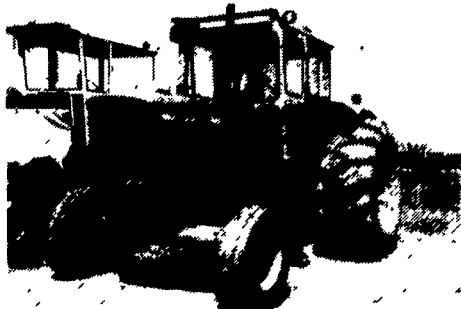
WITH forks, mounted on front. Recently completely overhauled. Will sell forks separately.  
**814-364-1421**



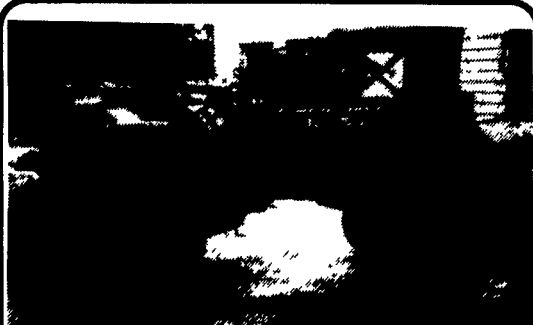
No. 23 JD 730, Electric Diesel, Dual Hyd., P/S  
**\$4200**  
(908) 946-7085 Days  
(908) 946-8876 Sundays & Evenings



No. 22 JD 730, Electric Diesel, Excellent, 3 pt., P/S Sway Blocks, Nice Paint.  
**\$5900**  
(908) 946-7085 Days  
(908) 946-8876 Sundays & Evenings



No. 17 JD 5020, w/24.5.32 Duals, Cab, 3 Pt., PTO, PS Dual Hyd. Brand New Engine 50 Hrs. Ago Field Ready.  
**\$12,500**  
(908) 946-7085 Days  
(908) 946-8876 Sundays & Evenings



No. 27 Allis Chalmers, D-12 Excellent Condition, PS, 3 pt. Slide Out Rear Wheels, Rear Weights  
**\$2500**  
(908) 946-7085 Days  
(908) 946-8876 Sundays & Evenings



**M-M "UB"**  
Gas, Live PTO, Hyd., Runs Well  
**\$3000.**  
717-458-4360  
Col. Co.



No. 3 JD 730 Electric start 2400 hrs., Excellent paint, 3 pt P/S, factory flat fenders, perfect tractor  
**\$7200**  
Ready to show or work  
(908) 946-7085 Days  
(908) 946-8876 Sundays & Evenings

We Will Be Closed Mondays Starting June 1st.

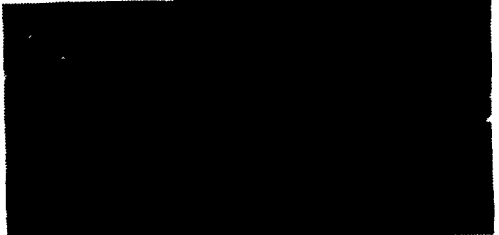
Coming In  
**IH 826 hydro**

Int: 7110 Cab, 4WD, 600 hrs; 5088 w/cab; 1486 4WD w/Cab; 1486 w/Cab; 1466; 1456; 1066 Black Stripe; (2) 1086 w/Cab; 1066 w/Cab; 1066; 966 w/Cab; IH 966; 986 w/Cab; 886; 884 w/Cab; 884 w/loader; 856 w/Cab; 808; 786; 686 w/Cab; 685 w/Cab, 4WD & Loader; 685 w/Cab; 685 w/loader; 658; 580, 544; 354, 140, 100 hydro, Ford 3L40 Skid Steer.  
JD 4450 Cab 4 WD; 4430 w/cab; JD 4020; 3020; 2950 4WD; 2940 4WD; 2440 w/loader; Ford 4610 4WD w/loader; Ford 861 w/loader; Ford 9N; Bobcat 731 Skid Steer; 722 Skid Steer  
Rakes: NH 256; JD 640; IH 14; (2) 35  
Balers: Round; NH 855; 852; 851; JD 325; 330; 410 Baler.  
Square: IH 47  
Grain Drills; IH 5300; (2) 510; JD FBB  
Planters: IH 800 4R, air, (2) 800 4R, 56, 4R; JD (3) 7000 4R;  
New & Used hay wagons: 1975 Chevy Dump Truck

Farmco feeders, Hurst trailers, Stock trailers, and all other types of farm equipment

From  
**LEADER'S FARM EQUIPMENT**  
Everett, PA  
**814-652-2809**

Take Exit 20B Off Of 83, 5 1/2 Mi. West To Belmont Farm.



**MF 65 Gas w/Ldr.**  
Separate Pump and Valves, Live PTO, Pwr. Str., 3 Pt. **\$3,000**  
Financing & Trucking Available  
**410-833-9091**



**Wit-Lane**

717-369-5319

Many Sizes New & Used Liquid or Dry Storage Tanks Available! U.L. Labels on New Tanks. Custom Manufactured to Your Needs!



**MF 1155 Cab**

AC, Heat, New Rubber, 3,000 Hrs., Exel. Cond.  
**301-241-4338**

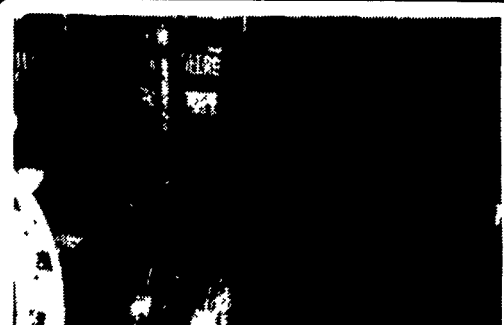


**Int. Tractor Model 1026**

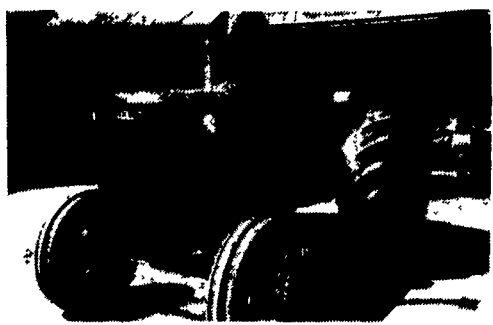
All New Tires, Very Good Condition  
**\$7,000**  
302/653-5539 or write:  
**Try-Us Wholesale Supply**  
PO Box 11104  
Wilmington, DE 19850



No. 8 JD AR, good running tractor, partially restored  
**\$2900**  
(908) 946-7085 Days  
(908) 946-8876 Sundays & Evenings



No. 1 JD 4 Bolt B full Rounds, Excellent & restored  
**\$5900**  
3 to choose from, different prices  
(908) 946-7085 Days  
(908) 946-8876 Sundays & Evenings



No. 9 IH W9, all rebuilt & restored, live hyd, PTO- rear weights  
**\$3500**  
(908) 946-7085 Days  
(908) 946-8876 Sundays & Evenings



**JD 4040 Cab**  
FWD, New Tires  
**\$21,900**



**JD 630 (Restored)**  
New Paint, Real Nice  
**\$6,500**

**NORTHERN TIER IMPLEMENT**  
MANSFIELD, PA (717) 662-3200