

Leinbach's Shippensburg Produce Auction

(717)532-5511
 Shippensburg, PA
 Average Prices Of #1 Produce
 May 4 and 9
 Price Differences are Quality, Size or Days

Open 10 a.m. Tuesday and Thursday
 Report Supplied by Auction
 APPLES: 2.00-3.75 1/4 BU.
 ASPARAGUS: 1.40-1.80 LB.
 CANTALOPES: SM. TO MED.
 40-1.38 EACH.
 EGGS: .50-.72 DOZ.
 POTATOES: UNCLASSIFIED 50 LBS.
 3.00-4.50.
 RHUBARB: .75 BUNCH.
 STRAWBERRIES: 10.00-18.00 8 QT. FLAT.
 TOMATOES: VINE RIPE 5.00-11.50 25 LBS.
 WATERMELONS: 4.25 EACH, 18-22 LBS.
 HANGING BASKETS: MIXED FLOWERS MEDIUM TO LARGE 5.50-11.00, SMALL TO MEDIUM 3.00-5.00.
 MIXED PLANTERS: MED. TO LGE. 6.00-9.00.
 ANNUALS: 4" POTS .25-.65 EACH;
 GERANIUMS 1.50-3.25, 6" 2.25-3.50.
 PERENNIALS: 4" POTS .40-1.25 EACH.
 HERBS: 4" POTS .60-1.00 EACH.
 TOMATOES: PATTIO 6" POTS .60-1.25 EACH.
 FLOWERS: ANNUALS 3.00-9.00 FLAT; PERENNIALS 6.00-13.00 FLAT.

VEGETABLE PLANTS: 3.00-5.00 FLAT; MIXED HERBS 5.00-11.00 FLAT.
 SHRUBS: SMALL 1.75-5.50 EACH;
 MEDIUM SHRUBS AND TREES 4.00-8.50 EACH; AZALEAS 2.50-5.00 EACH; RHODODENDRONS 9.00-12.00 EACH.
 TREES: SMALL EVERGREENS 1.00-3.00 EACH; SMALL TO MED. FLOWERING TREES 8.00-26.00 EACH.

New Wilmington Livestock Auction

NEW WILMINGTON, PA
 May 1, 1995
 CATTLE 161... PDA ...Compared to last Monday's sale...cows steady to 1.00 lower.
 HOLSTEINS: Select 53.75-59.00.
 HEIFERS: few Select and Choice 985/1310 lbs. 58.00-64.25.
 COWS: few Breaking Utility and Commercial 39.00-41.00, Cutter and Boning Utility 35.00-41.50, few 44.00, Canner and Low Cutter 33.00-36.25. Shells down to 26.50.
 BULLS: couple Yield Grade No. 1 1440 & 1470 lbs. 44.25 & 44.50.
 FEEDER CATTLE: HEIFERS: few Large Frame No. 1 400/600 lbs. 60.00-69.00, few Medium Frame No. 1 475/750 lbs. 46.00-55.50; FULLS: few Large Frame No. 1 475/700 lbs. 66.00-74.00, Medium Frame No. 1 400/700 lbs. 45.00-50.00.
 CALVES 144...VEALERS: couple Choice 210/270 lbs. 92.00 & 100.00, few Good 140/180 lbs. 72.00-103.00, Standard and

Good 65/105 lbs. 50.00-60.00, Utility 50/75 lbs. 15.00-40.00.
 FARM CALVES: few No. 1 Holstein bulls 120/135 lbs. 80.00-101.00, 90/115 lbs.
 109.00-125.00, few 80/85 lbs. 85.00-90.00, No. 2 90/115 lbs. 89.00-105.00, few
 No. 1 Holstein heifers 80/110 lbs. 195.00-230.00, few No. 2 70/115 lbs. 165.00-207.50.
 Few beef cross bulls and heifers 70/145 lbs. 103.00-130.00.
 HOGS 269...Barrows and gilts .25 to 1.00 higher.
 BARROWS AND GILTS: US 1-2 220/265 lbs. 35.00-38.00, US 1-3 200/270 lbs. 33.50-34.60.
 SOWS: few US 1-3 350/515 lbs. 28.00-29.50, one US 2-3 790 lbs. 27.25.
 BOARS: few 400/675 lbs. 22.00.
 FEEDER PIGS 8...Few US 1-3 50/75 lbs. 47.50-52.50. --- per head.
 SHEEP 98...SLAUGHTER LAMBS: Choice 100/110 lbs. 85.00-88.00, 50/100 lbs. 78.00, 20/50 lbs. 100.00-132.50.
 SLAUGHTER LAMBS: 23.00-45.00.
 GOATS 13...Few Large 50.00-64.00, few Medium & Small 40.00-49.00, few Large Kids 25.00-41.00. --- per head.
 00-125.00, few Good and Choice 70/110 lbs. 85.00-100.00.
 SLAUGHTER SHEEP: 25.00-52.50.
 GOATS 15...Couple Large 90.00 & 115.00, Large Kids 45.00-55.00, Small Kids 30.00-37.50. --- per head.

Mercer Livestock Auction

MERCER, PA
 May 2, 1995
 CATTLE 363... PDA ...Compared with last Tuesday's sale...all steers and heifers 1.00 lower, cows mostly steady.
 STEERS: Choice 1150/1400 lbs. 61.75-67.50, Select 55.00-63.25, Standard 48.25-55.25.
 HOLSTEINS: few Choice 1250/1525 lbs. 58.25-60.00.
 HEIFERS: Choice 1100/1350 lbs. 62.00-64.75, Select 54.25-60.75, few Standard 51.00-53.25.
 COWS: Breaking Utility and Commercial 38.50-40.50, couple 43.00, Cutter and Boning Utility 34.00-40.50, Canner and Low Cutter 32.00-35.00. Shells down to 27.00.
 BULLS: Yield Grade No. 1 1100/2000 lbs. 46.25-54.25, No. 2 985/2085 lbs. 39.50-45.50.
 FEEDER CATTLE: STEERS: few Large Frame No. 1 350/650 lbs. 66.00-74.00, few Medium Frame No. 1 345/700 lbs. 60.00-65.00, few Large Frame No. 2 350/425 lbs. 55.00-56.00; HEIFERS: Large Frame No. 1 275/625 lbs. 55.00-65.00, one 68.00, Medium Frame No. 1 300/625 lbs. 58.00-68.00; BULLS: few Large Frame No. 1 350/750 lbs. 55.00-66.00, Medium Frame No. 1 275/600 lbs. 61.00-67.00, few to 73.00.
 CALVES 88...VEALERS: Standard and Good 75/95 lbs. 40.00-65.00, Utility 45/75 lbs. 20.00-35.00.
 FARM CALVES: No. 1 Holstein bulls 90/125 lbs. 97.50-120.00, No. 2 80/115 lbs. 60.00-95.00; one No. 1 Holstein heifers 95 lbs. 225.00, few No. 2 75/120 lbs. 132.50-170.00.
 Beef cross bulls and heifers 80/110 lbs. 95.00-160.00.
 HOGS 100...Barrows and gilts .50 to 1.00 higher.
 BARROWS AND GILTS: US 1-2 230/270 lbs. 34.25-37.10, US 1-3 220/270 lbs. 32.85-34.00
 SOWS: US 1-3 325/600 lbs.

26.75-30.00, one 32.50.
 BOARS: couple 225 & 410 lbs. 20.50 & 22.00.
 FEEDER PIGS 0...NO MARKET TEST!
 SHEEP 5...SLAUGHTER LAMBS: few Choice 90/100 lbs. 70.00-79.00.
 GOATS 0...NO MARKET TEST!

New Holland Dairy

New Holland Sales Stables
 Wednesday, May 10, 1995
 Report supplied by auction
 DAIRY COWS 88; HEIFERS 90; BULLS 10. HEIFER MARKET STEADY; COW MARKET FRESH
 LOCAL FRESH COWS 885.00-1235.00.
 LOCAL SPRINGERS 850.00-1150.00.
 FRESH HEIFERS 935.00-1010.00.
 UPSTATE LOADS FRESH 875.00-1385.00.
 UPSTATE LOADS SPRINGERS 1000.00-1275.00.
 CANADIAN COWS PUREBRED AND GRADES FRESH 770.00-1285.00, SPRINGERS 810.00.
 JERSEY COWS FRESH 250.00-700.00/
 LARGE SPRINGING HEIFERS 1010.00-1225.00, SMALL 810.00, 960.00 AND 1425.00.
 SHORT BRED HEIFERS 580.00-885.00.
 REGISTERED HEIFERS 835.00-1210.00.
 OPEN BREEDING AGE HEIFERS 635.00-675.00.
 SMALL OPEN HEIFERS 510.00-590.00, SMALLER OPEN 300.00-410.00.
 GRADE BULLS 590.00-630.00, PURE-BREDS 450.00-700.00.

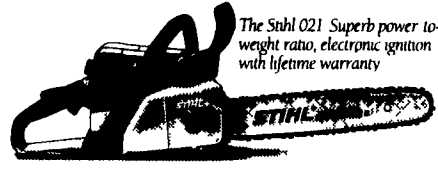
**MILK.
 IT DOES A
 BODY GOOD.**

MEAT MATTERS MOST

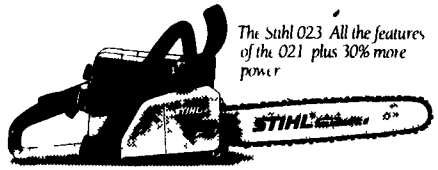


1994 was my last opportunity to exhibit 4-H Market Lambs. I am now a Pre-Vet Major at the University of Kentucky. I may be "too old" for the showing but I haven't lost my enthusiasm for the club lamb business. I still have the same powerful ewe base that has produced the winningest market lambs in the Mid-Atlantic area. And, I intend to keep on producing winners for others.
 In 1993 I purchased the National Champion Wether Sire at the Midwest Stud Ram Sale in Sedalia, Missouri. He has worked even better than I expected on my flock. I call him "LIMO". You will call his lambs L-O-N-G, SMOOTH, and TIGHT. These pretty profiling lambs with high tail sets will not disappoint!
 Consider the record of DINSMORE bred market lambs in the last 11 years. Why not select your show prospects from the flock with a proven track record?
MARYLAND STATE FAIR (1984-1994)
 • Grand and Reserve Champion and 7 first place lambs in 1994
 • 5 Grand Champions and 6 Reserve Champions
 • 48 first place lambs
KEYSTONE INTERNATIONAL LIVESTOCK EXPO (1984-1992)
 • Grand Champion (Open); 3 Reserve Champions (Junior)
 • Grand Champion Pen of 3; 3 Reserve Champions Pens of 3
 • Grand Champion Carcass Lamb
EASTERN NATIONAL LIVESTOCK EXPO (1984-1994)
 • Grand Champion Novice Lamb; Reserve Champion Novice Lamb
 • Grand Champion (Open)
 • 3 Grand Champion and 2 Reserve Champion "All Maryland" Lambs
MARYLAND SHEEP AND WOOL FESTIVAL CARCASS CONTEST (1983-1994)
 • 4 Grand Champions and 3 Reserve Champions
MHSA HAMPSHIRE JACKPOTS (1992-1994)
 • 3 Grand Champions and 3 Reserve Champions (Summer Jackpot)
 • 3 Grand Champions and 1 Reserve Champion (State Fair)
 • 1995 winnings: Grand Champion Hamp at PA FARM SHOW
 Grand Champion Carcass Lamb at MD SHEEP AND WOOL FESTIVAL
 Grand Champion Feeder Lamb at MD SHEEP AND WOOL FESTIVAL
ROBERT DINSMORE CLUB LAMBS
 5842 Broad Run Rd., Jefferson, MD 21785
1-800-331-9122 Evenings 301-371-4483

The Grown Man's Candy Store.



The Stihl 021 Superb power-to-weight ratio, electronic ignition with lifetime warranty



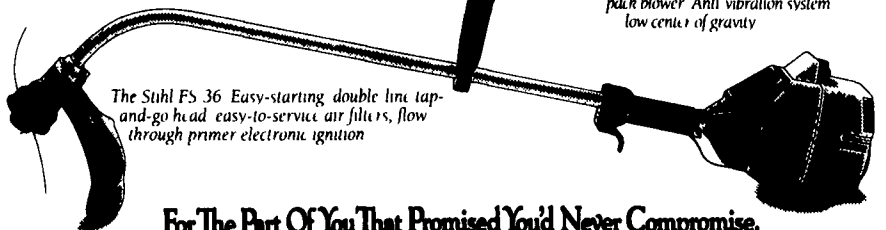
The Stihl 023 All the features of the 021 plus 30% more power



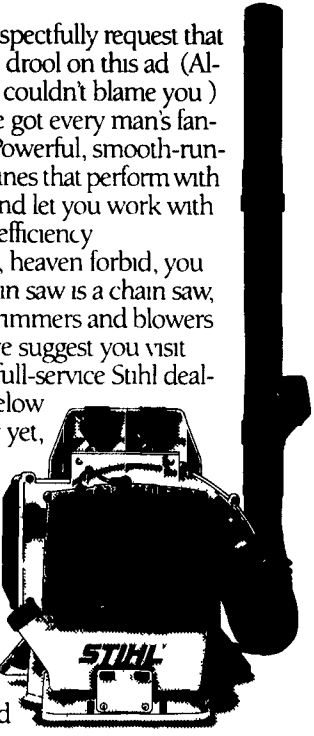
The Stihl 025 More powerful than the 023 plus convenient side chain tensioner



The Stihl 026 Designed for professional use, or the demanding weekend woodcutter



The Stihl FS 36 Easy-starting double line tap-and-go head easy-to-service air filters, flow through primer electronic ignition



The Stihl BR-106 Powerful back pack blower. Anti vibration system low center of gravity

We respectfully request that you do not drool on this ad (Although we couldn't blame you)
 We've got every man's fantasy here Powerful, smooth-running machines that perform with precision and let you work with speed and efficiency
 But if, heaven forbid, you think a chain saw is a chain saw, or that all trimmers and blowers are alike, we suggest you visit one of the full-service Stihl dealers listed below
 Better yet, talk to any man who owns a Stihl He'll give you a more enthusiastic sales pitch than any ad we could ever write

For The Part Of You That Promised You'd Never Compromise.



Available at these servicing dealers

- Airville**
WOODBINE MOWER & SAW CO.
1268 WOODBINE RD.
717-882-3271
- Dallastown**
TRI-BORO CONCRETE, INC.
438 LOCUST ST.
717-248-3085
1-800-632-8018
- East Earl**
GOODS LAWN & GARDEN CENTER
Route 23
717-354-4028 Ext. 34
- Elizabethtown**
MESSICK FARM EQUIPMENT, INC.
Rheems Exit-Rt. 283
Elizabethtown, PA
717-367-1319, 717-653-8867
- Ephrata**
WES STAUFFER ENGINES & EQUIPMENT
23 Pleasant Valley Rd.
717-738-4215
- Ephrata, Hershey**
HOLLINGER'S LAWN & GARDEN EQUIP.
Ephrata, Pa. 717-738-1131
717-886-2710
Hershey, PA 717-533-4080
- Gap**
GAP POWER EQUIPMENT
Corner of Rt. 30 & Rt. 607
717-442-8970
- Hamburg**
SHARTLESVILLE FARM SERVICE
RD 1, Box 1382
610-488-1025
- Hummels Wurt**
HUMMEL'S TEXACO
Rt. 11 & 15
717-743-7488
- Jonestown**
BLUE MOUNTAIN ENTERPRISES, INC.
Rt. 72 South
717-885-2984
- Lititz/Lebanon**
BOMBERGER'S LAWN & GARDEN
Lititz: 717-826-3301
Lebanon: 717-272-4155
- Loyersville/Carlisle**
GUTHSHALL'S INC
Loyersville, PA - Carlisle
717-786-4343 717-248-2313
- Myerstown**
EBLING LAWN & GARDEN SERVICE
688 E. Lincoln Ave.
717-866-8720
- Oxford**
ENFIELD EQUIPMENT
9800 Limestone Rd.
610-632-8888
- Palmyra**
HERR'S REPAIR SHOP
RD 2, Box 115A
717-838-1548
- Palmyra**
WEAVER'S LAWN & GARDEN
740 W. Main St.
717-838-6989
- Reamstown**
EAGLE RENTAL CENTER
Rt 272, Reamstown Traffic Light
717-336-3945
- Ronks**
A & B SALES & SERVICE
370 Newport Road
2 Miles South of Rt. 23
Along 772 Thru Monterey
Schaefferstown
MARTIN HARDWARE & EQUIPMENT CO.
Rt. 501 1 1/2 Miles South of Schaefferstown, PA
717-848-8617
- Shippensburg**
LEINBACH FARM EQUIP.
1120 Ritter Hwy.
717-532-8811
- Tamascus**
CHARLES S. SNYDER, INC.
RD 3
717-388-8848
- Hancock, MD**
HANCOCK BLOCK TRUE VALUE
220 Fulton St.
301-678-7242
- Whiteford MD**
ENFIELD EQUIPMENT INC.
720 Wheeler School Rd.
301-678-5000

DISTRIBUTED BY KEYSTONE STIHL