

HOME MORTGAGES

COMPETITIVE RATES & DOWN PAYMENT

Terms up to 30 Years

We Consider

• Slow Credit

• Bankruptcy

• Self-Employed

• Foreclosure & more

NO APPLICATION FEE

APPLY BY PHONE

CENTURY MORTGAGE

800-458-9396

Our 15th Year

CUMBERLAND CO.

NEWVILLE -

152 acre dairy farm,
110 acres tillable,
two streams,
bank barn,
milk house,
heifer & dry cow
barn, & implement
building.

Farmhouse - 4 bdrm.
eat-in kitchen.

\$325,000

for info. call

717-258-1921

125 Acre Farm for sell by owner in Ovid, NY.

95 acres tillable. 25 acres wooded. 40x100 Barn. 24x48 Pole Barn. Workshop and Sheds. Underground spring to house with well and septic. Crop rotation plan in use. Drain tiles thru-out land. Greek revival. two-story house of beautifully remodeled 1,948 Sq. Ft. of living space with 900 sq. ft. of unfinished living space. Possible 6 bedroom plus home. Amish within two miles of location. \$150,000 Firm.

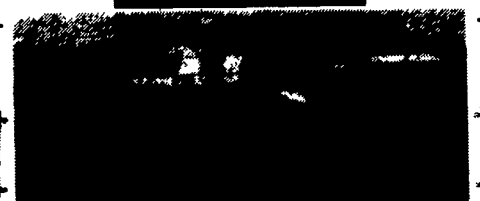
Please call 315-568-2753 before 4:00 and 607-869-9408 after 4:30.

Vegetable and Grain Farm

Lycoming County. 225 Acres, Approx. 150 Tillable Riverbottom Ground. Large Brick House, 4BR 2 1/2 Bath, 42x80 Pole Shed w/1 Bay Enclosed and Insulated, 40x50 Metal Shed, Small Barn, 80' Leg Elevator, 50,000 Bushel Grain Storage.

\$325,000

Lancaster Farming
c/o S51
P.O. Box 609
Ephrata, PA 17522



YOU'LL FIND YOUR DREAM!
30 AC M/L Farmette with modern brick 2.5 sty house. 4 BR, 2 bath, excellent condition. Bank barn, implement shed, and large Morton bldg. Pasture with pond & stream, balance tillable. Priced to sell at \$217,000. Additional 121.5 acres available to rent or purchase. Possible owner financing to qualified buyer.



**For Details Ask
For Ed Meyer**
717-697-4673 Office
717-243-1030 Home

Clip and Save This AD!

MODERN VEAL CALF OPERATION

JUNIATA COUNTY PA

55 MILES WEST OF HARRISBURG

244 pens, 2 story bank barn w/lot of hay, grain or machinery storage, large machine shed w/grain storage, under ground waste storage, all of the above new since 1978, fully automatic emergency generator, 2 1/2 story 4 bedroom home completely remodeled, 2 fireplaces, 2 story front porch, enclosed rear porch, modern kitchen, formal dining room, many extras, lot of good water from stone spring house, small mountain stream and drilled well, nice setting, very secluded w/easy access for large trucks. Buildings not used for calves are well suited for light manufacturing for extra income, must be inspected to appreciate, acreage negotiable w/additional acreage for long term lease, veal calf contract available, call for details.

LARRY LONG REAL ESTATE

717-527-4784

CALL ANY TIME

AUCTION

906+ ACRES • 22 TRACTS

PRIME FARMLAND • POTENTIAL BUILDING SITES
WOODED TRACTS • WILDLIFE • HUNTING

THURSDAY, JUNE 15 AT 6:30 PM

Montezuma Fire Station, Montezuma, Indiana

TRACT DESCRIPTIONS

- TRACT 1: 80 ACRES, all tillable, level; Warsaw and Fox soils. Frontage on 325N
- TRACT 2: 80 ACRES, mostly tillable, Warsaw and Fox soils. Frontage on 325N
- TRACT 3: 54 ACRES, all tillable, level, Warsaw soil. Frontage on 325N and 600W
- TRACT 4: 9 ACRES, building site with barn, storage buildings and grain bins. Frontage on 600W
- TRACT 5: 12 ACRES; excellent building site; road frontage on 325N and 600W.
- TRACT 6: 48 ACRES, mostly tillable, some wooded, Fox and Warsaw soils. Frontage on 600W.
- TRACT 7: 68 ACRES, all tillable, Fox and Warsaw soils. This tract must be purchased in combination with any adjoining tract with road frontage or by an adjoining land owner
- TRACT 8: 12 ACRES, mostly tillable, level; Fox and Warsaw soils, adjoins wooded tracts. Frontage on 600W
- TRACT 9: 27 ACRES, mostly tillable, Fox and Westland soils, potential building site. Frontage on 325N and 600W
- TRACT 10: 20 ACRES, mostly tillable, level, Fox, Warsaw and Westland soils. Frontage on 325N and 600W
- TRACT 11: 30 ACRES, partly tillable, level, Fox and Westland soils, Ockley soil on wooded. Potential building sites, hunting, wildlife and recreation. Frontage on 600W
- TRACT 12: 25 ACRES, all tillable, level, Ockley soil. Frontage on 325N
- TRACT 13: 13 ACRES, potential building site, some tillable and wooded, adjoins larger wooded tracts. Frontage on 325N
- TRACT 14: 27 ACRES, excellent potential building site, some tillable and wooded; adjoins larger wooded tracts, includes electric, grain bins, barn and storage buildings. Frontage on 325N
- TRACT 15: 78 ACRES of woods and pasture, great for hunting, nature lovers, grazing, secluded potential building site or camping. 50' frontage on 600W
- TRACT 16: 66 ACRES of wood and pasture; great for hunting, nature lovers, grazing, secluded potential building site or camping. 50' frontage on 600W.
- TRACT 17: 48 ACRES, woods and pasture. Must be purchased in combination with Tract 15 and/or 16 or by an adjoining landowner.
- TRACT 18: 19 ACRES, excellent building site, mostly tillable; Fox, Warsaw and Sleeth soils. Frontage on 600W.
- TRACT 19: 59 ACRES, all tillable; Warsaw and Westland soils. Frontage on 550W.
- TRACT 20: 52 ACRES, mostly tillable; some wooded on Wabash River; level; Genesee, Allison, Armiesburg and Eelsoils. Highly productive land. Frontage on 780W.
- TRACT 21: 14 ACRES, mostly tillable, on the Wabash River, level, Armiesburg and Allison soils. Frontage on 780W.
- TRACT 22: 65 ACRES, mostly tillable, on the Wabash River, level, Armiesburg and Allison soils. Frontage on 780W

OWNER:
Mrs. Virginia Vestal Lightfoot
Sale Manager: Gary Bailey,
1-800-659-9759, #AU0920000

INSPECTION DATES:
Tues., May 16 • Sat., May 20
Thurs., May 25 • 2 to 5 PM
At Tract 14

Call For Complete Brochure • 1-800-451-2709

SCHRADER REAL ESTATE & AUCTION CO., INC.
209 W. Van Buren, Columbia City, IN 46725
Rev. D. Schrader, #AU 01003815, Co. #AC 63001501



FOR SALE

JUNIATA COUNTY FARM LAND

250 acre country estate w/2 1/2 story stone home, covered patio, deck overlooking large pond, bank barn & equipment sheds, 2 ponds, 84 acres tillable, 30 acres pasture, 135 acres woodland bordering State Gamelands. Property is ideal for various farming & leisure enterprises. Priced right at \$425,000.
89 acres farm land, no buildings, mostly tillable, near town. Large creek on the border. Good for truck farming operation and other farm uses. Only \$2,100/acre.
25 acre productive orchard w/Cape Cod home, small barn, southern exposure, private road. Only \$159,000.
Choice vacation home sites, over 2 acres each, southern exposure, great views, easy access, private. \$35,000 each.

Call CHARLIE BROOKS for details.
717-436-8431
DONALD W. TURBETT, BROKER
717-436-5383

SIX ACRE MINI ESTATE

BEAUTIFULLY RESTORED stone farmhouse! Gorgeous setting w/pond & stream. Home includes 3 BR, 2 baths, many closets, kitchen w/island, large dining area, den/sewing room, 2 fireplaces, deep window sills & hardwood floors. Located in beautiful southern Lancaster County, Pennsylvania. \$319,000. Call today for details. W467

MODERN DAIRY SETUP

106 ACRES surrounded by 100 tillable, level acres of top quality soils. Dairy barn: 40x170, pipeline milking system, 68 tie stalls. Also 20x90 & 20x42 Harvestore, 50x60 corn barn, equip. shed, slurry store system & more. Beautifully restored 2 story brick farmhouse. Elizabethtown area. \$995,000.

Call Ray Stoltzfus, (717) 786-1300 (Office)
or (717) 548-3785 (Home)
Century 21 - Wagner - Hatton Assoc.
Quarryville, Pa • 717-786-1300



SNYDER COUNTY DAIRY FARM
set up for 24 cows, vinyl sided house, new roof on house & barn. 85 acres 62 tillable.
\$270,000



SNYDER COUNTY TURKEY FARM
(3) Brooding (3) Finishing 1 story buildings all built since 1991. 50,000 birds Good income. 60+ acres. 10 room house, 5 B.R. 2 1/2 baths, hot water heat, 2 car garage, bank barn, composter, sheds, mobile home and some equipment included. \$750,000
LEROY HIBBS REAL ESTATE
(717) 837-0265

FARMS & FARMETTES

PINE GROVE - 127 acres, 150 yr. old farmhouse, corn crib/machine shed, smokehouse, bank barn, garage/workshop. \$315,000.

KUTZTOWN - Completely remodeled stone home w/fantastic view, lge. pole barn, garage, 2+ acres, \$154,900.

BETHEL TWP - Bring your horses! 15 acres at base of Blue Mts. w/cozy ranch, large barn, horse trails nearby! \$162,900.

KEMPTON - View Hawk Mt. & the Pinnacle from this gracious farmhouse on 4+ acres. Wrap porch, sun room, fireplace, large barn. \$199,000 Open House May 21, 2-4 PM Traveling N on Rt. 143, 1 mile past Kempton Fire Co., 1st left, follow signs.

BERNVILLE - Secluded loghome on 12+ acres. 3500 sq. ft. four yr. old 2 story home, 3/4 acre pond, convenient to major highways. \$329,900.

ERA® Blue Mountain Realty
(610) 562-8599 (610) 488-7614

THE REAL ESTATERS OF MANSFIELD

1671 S. Main St., Mansfield, PA 16933
(717) 662-2138 • Evening (717) 662-2363

PRIDE OF OWNERSHIP DAIRY FARM

Bradford County set up w/95+ tie stalls st. run back to back + 13 heifer and 5 box stalls. 2,000 gal. 2" S.S pipeline. 20x40, 20x70 & 20x80 stove silo. 120x60x14 pole barn/shop/storage shed. Approx. 280 acres - 140 tillable. Beautiful 2 story, 4 bdrm, 1 1/2 bath home w/detached garage/shop rec room. Extremely well priced at \$324,900. Second home available. M-605

SHOWPLACE DAIRY FARM

Approx 267 acre operating farm in Bradford County, PA. 3 section barn w/64 tie stalls on pipeline. 62 comfort stalls & 48 young stock stalls. 20x60 and 20x80 Harvestores. 24x80 concrete silo. 4 bdrm., 2 bath, remodeled home. More acreage available. Priced at \$329,000. M-576.

CAMP ON 10+ ACRES

All wooded in Covington Township on privately maintained road. Walking distance to State Forest. Perc site available. 1,000 gallon privy in place. 20x24 camp on piers w/10x16 deck. Propane stove and re-frigerator included. Wired for generator. Exterior completely re-stained and trimmed. Great value at \$21,900. M-330.

OWNER FINANCED ACREAGE!

10 acres in Tioga River Vista Subdivision suitable for camp or recreational use. All wooded w/Mt. Laurel thruout. Approved perc site. Within walking distance of State Forest Lands. \$10,900 w/\$3,900 down bal \$7,000 5 yrs. 9.75% int. \$147.87 p/m. M-453.

WELLSBORO FARM OR HOMESITE

Approx. 63 acre farm near Thumtowntown. Just minutes to Wellsboro and Grand Canyon on paved road. 3 to 4 bdrm. house needing major repairs. 2 story bank barn currently used for helpers also needs some work. Mix of tillable, pasture & woods. Just \$79,900. M-590.

GENERAL PURPOSE FARM

With very nicely remodeled 2 story, 4 bdrm. frame home. Bank barn w/back to back dairy stalls. Would convert easily for dry cows, beef or horses. Fishing stream at rear of property. Approx. 33 acres. Just minutes to Mansfield. \$108,900. M-553.