



**1986 Isuzu with Steel Bed**  
Good Rubber, Overhauled \$6,500  
**717-529-2512**  
No Sunday Calls

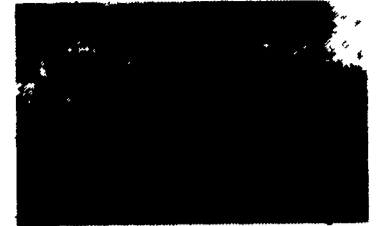


**1974 KW, K100**  
350 Cummins, Jake Brake, 8 bag air ride,  
air ride cab, 24.5' Alum., 13 speed O.D.  
PA inspected, Ready to work.  
**\$5,500**  
Call 717-677-4477 Evenings

**USED TRUCKS**



'95 Dodge Ram 1500, Ext Cab, SLT,  
4x4, 360 F.I. Eng., AT, AC, PW, PDL,  
AM-FM Cass., Cruise, Tilt, Local One  
Owner, 10,000 Miles, Green  
**\$24,700**



'91 Ford F-250 8600 GVW 5.8 or 351  
FI, Auto, PS, PB, AM & FM Cass.  
Dual Tank 43,000 miles. Clean truck.  
**\$11,900**

Financing Available

**MARTIN'S AUTO SALES**  
1025 W. Main St., New Holland, PA 17557  
(717) 656-6621

**1995 DODGE RAM T-300 PICKUP**



30 AVAILABLE

**1995 DODGE DAKOTA CLUB CABS 2WD & 4WD**



28 AVAILABLE

Over 150 New Mini Vans In Stock!

We Are One Of The Largest Volume Dodge Truck Dealers East Of The Mississippi



ROUTE 422, ROBESONIA, PA. (215) 693-5855

"National Award-Winning Dealer"

"Ask A Friend About Us"

**1-800-800-2623**



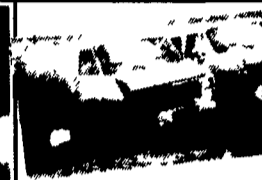
**AUTO BODY & SALES**

Rt. 322 - 1/2 Miles west of Blue Ball  
New Holland, PA • 717-355-0611

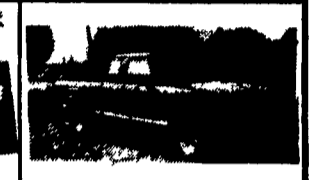
Specializing in Rebuilt Collision Damage Vehicles



'90 Ford Bronco II XLT  
4x4, 2.9L, AT, AC, PS, PB, PW,  
PDL, Needs Door and Quarter  
Panel And Rear End, 72,000 Mi.  
**\$4,800 w/parts**



'93 GMC G-3500  
Panel Van  
6.2 Diesel, 94,000 Mi.,  
Front Right Damage  
**\$3,900**



'92 Ford Ranger X-Cab XLT  
2WD, 3.0 V6, 5 Spd., 65,448  
Miles, Flood Damage Engine  
Has Noise, Otherwise Very  
Little Damage **\$5,950**



'90 Chevy Beauville  
Ext. Van  
15 Pass., 350, Dual AC,  
Cassette, 83,000 Mi.



'92 Ford Bronco  
Eddie Bauer, 5.8L, AT, AC,  
PS, PB, Tilt, Cruise, PW,  
PDL, Leather, 60,000 Mi.,  
Good Title **\$8,800**



'94 Ford Ranger XLT  
Ext Cab, 2.3L, 5 Spd.,  
AC, 11,000 Mi.  
**\$5,800**

Mark Vills • Pickups • Broncos • Stake Body • Crew Cabs



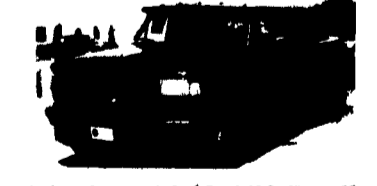
**Great Selection F250's & F350's Supercab & Crew Cab**  
Turbo Diesels In Stock



**F350 CREW CABS and F250 SUPER CABS 4x4's**  
5 In Stock - More On The Way - Power-Stroke Diesel - Auto or Stick Hard-To-Get. We Got 'Em



**FORD E150 CONV. VANS**  
Low Tops - High Tops, 30 To Choose From, Starting As Low As **\$23,000**



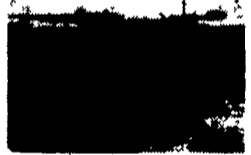
'95 FORD F350 4X2 Dually  
Crew Cab, 460 V8 Gas, AT,  
Centurion Conversion  
#6736



'95 FORD F350 4x4 Dually  
Crew Cab, Power Stroke Diesel, AT,  
Centurion Conversion, One of a Kind  
#6626



**MERCURY VILLAGER**  
5 to Choose From  
STARTING AT **\$20,000**



**FORD AEROSTAR**  
6 to Choose From  
STARTING AT **\$16,000**



**FORD WINDSTAR**  
35 to Choose From  
STARTING AT **\$19,000**



'94 FORD EXPLORER 2  
Dr Sport, 4x4, 5-Spd., Loaded 20,000 Mi.  
#5118C  
WAS \$18,999 NOW **\$18,199**



'91 FORD EXPLORER XLT  
4 Dr., AT, Loaded, 2-Tone Paint,  
48,000 mi. #6780A  
WAS \$17,499 NOW **\$16,200**



'91 JEEP CHEROKEE  
Sport, 4x4, 4-Dr., 6 Cyl., AT, W/Meyer  
5 Ft. Plow, 46,000 Mi. #6795A  
SUPER SALE **\$16,400**



'91 FORD EXPLORER  
2 Dr., 42,000 Mi., 6-Cyl., Stick,  
Air, #6440A, Was \$16,999  
SUPER SALE **\$12,999**



'93 FORD RANGER  
6-Cyl., 5-Spd., Nice,  
Only 20,000 Mi., Was \$13,999  
NOW **\$11,499**



'92 CHEV K2500 4X4  
351 V8, AT, Silverado Pkg., 42,000  
Miles, #6467A, Was \$16,999  
SUPER SALE **\$17,499**



'94 FORD F150 4X4  
6 Cyl., 5-Spd., Air, 37,000 Mi.,  
Was \$17,999  
NOW **\$15,999**



'90 FORD F150 S/C  
4x2, 6-Cyl., 5-Spd., Air,  
#6644A, Was \$12,999  
NOW ON SALE **\$9,899**



'93 MERCURY  
VILLAGER LS  
Only 23,000 Mi., Quad Buckets,  
#P2218 Was \$18,999  
NOW **\$18,999**

Unless the Starby Emblem is on Your Car or Truck...You Probably Paid too Much!



**LEBANON**

-20th & CUMBERLAND STS. - RT. 422 WEST

9-9 DAILY; 9-5 SATURDAY - SHEEHY HOTLINE: (717) 272-7871 OR 633-5293

PARTS DEPT OPEN  
DAILY 8-5  
SAT 8-12  
(717) 273-8100

Contours • Aspires • Diesel Pickups • Mustangs • Thunderbirds

Explorers • Grand Marquis • XLTs • Custom Vans

Mystiques • Cougars • Continentals • Town Cars • 4x4s • Rangers