



**TRUCKCRAFT**

**PICKUP INSERT DUMPER**  
For FREE brochure, call toll free 24 hr.  
1-800-755-3867

**35 TRUCKS & TRAILERS**

1986 Landoll Hyd. detach 48' trailer, Air ride tandems, beaver tail, top deck, good condition  
**\$15,000**  
**717-265-9014**



**6850 Gallon Alum. Tank Trailer 6" Gate, Valve, Good Condition**  
**\$4,200**  
**717-463-2318**

Heavy duty ladder rack for 8' pickup, has extension over cab and steel mesh guard over and behind cab, \$75. Call 717-933-8835.

Hillsboro Hydraulic Gooseneck Dump, 18', Grain Sides, Tarp and Hay Sides, Excellent Condition. (610)488-7175.

Vintage truck sale: 1997 GMC 2-ton \$700; 1993 INT. L-150, \$600; 1992 Ford F-5 dump \$300; 1994 Ford F-250, \$600; 1995 Ford F-6, \$300; 1991 Ford F-100, \$200; 1988 Chev. C-20, \$200; 1948 Ford F-6 cabover, \$1000. Week-days 610-461-9985 Del.

**Huntingdon Equipment**

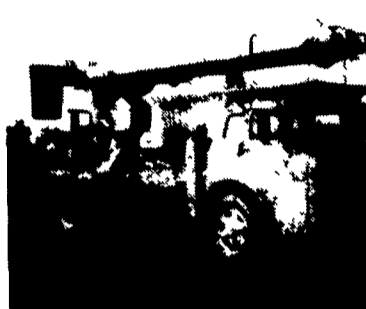
Rentals Available **GOOD USED EQUIPMENT**

Huntingdon Valley, PA • 215-672-9667 • 1-800-543-3833 • Eddle

**SPRING SALE DAYS**



Vermeer M-470 Trencher with backhoe. This is one of six units we have all ready to work. Starting at \$4,500.



Powers Bucket Truck two man lift with jib working ready.



International Presser Digger This Unit is Ready To Work. Sale Price \$6,500



Pitman Boom with jib 15,000 pounds cap - 4 outriggers. Sale Price \$8,250.00 Won't Last Call Now!!



Need A Lift? We Have A Large Selection Of Boom Trucks Up To 14,000 lbs. Cap. Some With Post Diggers.



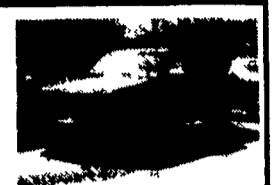
Bucket Trucks 28' to 65' Gas and Diesel. Call For Details.

**DIGGER DERRICKS/AERIAL BUCKETS/UTILITY EQUIPMENT**

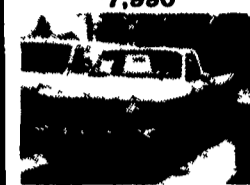
**WILLIAM H. WESSELS USED CARS**  
15 LATE MODEL MINI VANS IN STOCK  
**\$3,750 to \$11,900**



92 GMC 1500, 305 V-6, Auto, PS, No AC, 78,308 Miles, One Owner \$7,990



89 CHEV SHORT BED V8, 4x2, 5 Speed, AT, 59,900 Miles \$7,990



88 FORD F-250, 4x4, 8800 GVW, 351 V8, Auto, AC, 'R' Title \$8,990



90 FORD CREW CAB 4x4 480, Auto, PS, AC, Only Average, Ready To Work \$9,900



**87 FORD 14' CUBE VAN LIFT GATE, 62,000 MILES \$8,750**

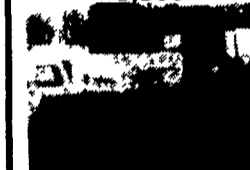
90 Chev C-2500 Work Truck, V8, Auto, PS, AC, 70,104 Miles \$7,990



90 DODGE D-400 4x4 Dump, As Trade, Run Well, Not Perfect or Inspected \$5,900



87 FORD CF 6,000 Cab & Chassis, 6 Cyl., Diesel, 5 Speed, 26,500 GVW, 157,000 Miles \$8,900



90 FORD SUPER DUTY DIESEL DUMP, 7.3, 5 Speed, 82,106 Miles \$12,900



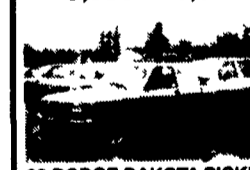
90 FORD F-350 CREW CAB Dually 480 EFI, Auto, PS, AC, One Owner, 107,000 Mi. \$12,900



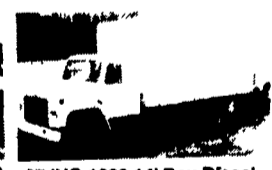
90 FORD E-250 CARGO VAN, 6 Cyl., Auto, AC, 102,000 Miles 4 to Choose From \$3,990 - \$6,990



90 FORD F-250 SUPER CAB, 8800 GVW, 4x2 \$6,990



93 DODGE DAKOTA PICKUP EX-CAB V-6, Auto, PS, 4x2, 83,206 Miles \$9,900



87 IHC-1600 14' Box Diesel, Nice \$9,900



92 FORD AEROSTAR 3.0, V6, Auto, AC, PS, Black, 61,206 Miles \$7,990



88 CHEV C-2500 4x4, 305 V8, Auto, AC, 120,116 Mi. \$8,900



87 CHEV 30-SERIES 4X4, Crew Cab, Cab & Chassis 454, 4 Speed, AC, Nice! \$9,900



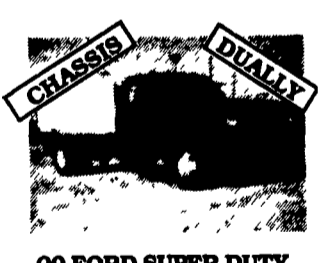
86 FORD F-350 UTILITY TRUCK 351, V8, Auto, AC, PS, - Nice! \$8,700

**WILLIAM H. WESSELS USED CARS**  
811 Route 15 Dillsburg, PA  
1-800-440-4433 1-717-432-2918  
Factory Cubes Temporary Cabs

**OVER 90 TRUCKS**  
**Bobby Corhart's Truck World**  
E. Cumberland Rt. 422 Lebanon, PA 17042 717-273-7995  
Mon. - Fri. 9-9, Sat. 9-3



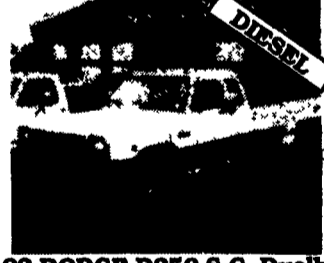
91 FORD F450 18' Stake Diesel, Auto, 18' Body, 14,500 GVW White #F342



90 FORD SUPER DUTY 460, 5 Speed, 161" Wheelbase, Cab & Chassis, Blue, Nice Shape #F326



93 DODGE D2500 SC 4X4 Cummins Diesel, AT-OD, AC, Loaded, 33,000 Mi., Perfect Condition #D130



92 DODGE D350 S.C. Dually Cummins Turbo Diesel, Auto, AC, LE Pkg., Loaded, 40,800 miles #D132



90 CHEV AMBULANCE 350 Auto, AC, PW, PL, Rear Box w/All Equip. All The Lights & 2 Gurneys, Ready To Go To Work, 56,987 Miles #C253



95 INT 444E ROLLBACK Turbo-Diesel 5 Spd., AC, Loaded, Susp. Seat, 21,440 GVW, 19 ft. Wide Alum Jer-Dan Bed w/Independent wheel Lift & Tow Hitch



88 CHEV. 14' STEP VAN 350 Auto, Rear Roll Door, Dually, Red, 71,716 Miles #C250



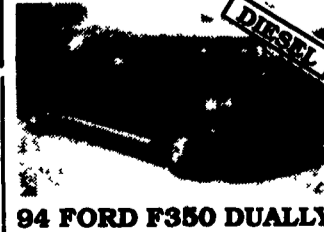
88 FORD F450 SUPER DUTY 7.3 Diesel, 5-Spd., PS, PB, 9 Ft., Dump Body, #F333



88 FORD F250 S.C. DUALY 7.3 Int. Diesel, AT, A/C, Loaded, 59,000 Mi. #F343



87 FORD F350 STAKE DUMP DIESEL, Auto, 12' stake elec. dump-White 35,865 miles #F339



94 FORD F350 DUALY CREW CAB 7.3 Diesel, XLT, AC, AT, Chrome Wheels, Only 9,600 Mi., Factory Warranty, #F334



CASE 580 C BACKHOE w/Loader Bucket, Low Hrs., Ex. Machine on Rebuilt Motor, Extra Lights, Local One Operator