

# PRODUCE MARKETS

## Phila. Fruit Market

PHILADELPHIA  
MAY 10, 1995

**CITRUS FRUITS**  
 ---GRAPEFRUIT: MARKET ABOUT STEADY 4/5 buctns FL Indian River Red 23s 9.00 27s  
 9.00 32s 9.00 36s 8.00-9.00 40s 9.00 48s 10.00 56s 10.00 Interior Red 40s 8.00 56s 8.00  
 ---LEMONS: MARKET STEADY ctns CA 95s 17.00 fr qual 11.00 115s 18.00-18.50  
 fr qual 13.00-14.50 mos 13.00 140s 20.00 fr qual 15.00-16.00 some  
 hias 17.50 165s 22.00 fr qual 16.00-17.00 few 19.50 200s 22.00 fr qual 16.00  
 ---MISC CITRUS: OFFERINGS INSUFFICIENT TO QUOTE  
 ---ORANGES: MARKET STEADY ctns CA Navel 48s 14.00 56s 16.00 few hias

18.00 fr qual 11.00 72s 14.00-16.00 mostly 16.00 fr qual 11.00-13.00 mos 12.00 88s 14.00-16.00 mostly 15.00 fr qual 10.00-13.00 mos 12.00 113s 13.00-15.00 fr qual 11.00-13.00 mos 11.00-12.00 few 10.00 138s 13.00 fr qual 11.00 Valencia 36s fr qual 9.00 40s fr qual 9.00 4/5 buctns FL Valencia 56s 9.50 64s 9.00-10.00 80s 9.50-10.00 100s 10.00-11.00 mostly 10.00-10.50 125s 10.00-11.00 mostly 10.00-10.50  
 ---TANGELOS: OFFERINGS NONE  
 ---TANGRINES: OFFERINGS NONE  
 ---TEMPLES: OFFERINGS NONE  
**BERRIES**  
 ---BLUEBERRIES: OFFERINGS LIGHT fls 12 1/2-pt flmwrpd bkts FL med 24.00  
 ---CRANBERRIES: OFFERINGS INSUFFICIENT TO QUOTE  
 ---MISC BERRIES: OFFERINGS LIGHT fls 12 1/2-pt bkts with lids MX Blackberries 18.00

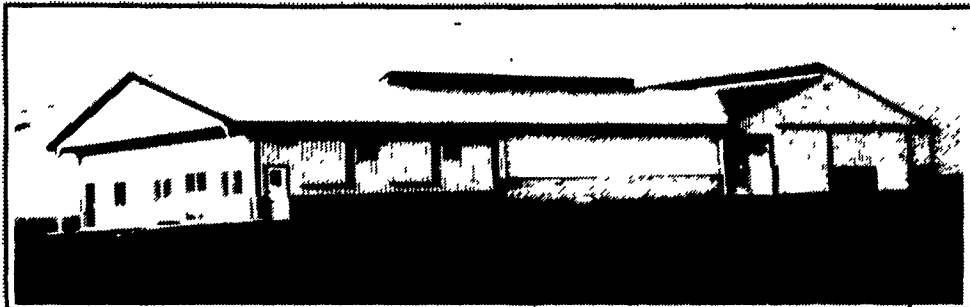
---RASPBERRIES: OFFERINGS INSUFFICIENT TO QUOTE  
 ---STRAWBERRIES: MARKET HIGHER fls 12 1-pt bkts CA med-lge 9.00-11.00  
 mostly 9.00 fr cond 5.00-6.00 mos 6.00 MX med fr cond 6.00  
 fls 8 1-lb cntr with lids CA med 11.00  
**MELONS**  
 ---CANTALOUPS: MARKET LOWER 1/2 ctns/crtns GU 12s 12.00 15s 13.00-14.00  
 few hias 16.00 18s 13.00 HD 9-12s ord cond 4.00-5.00  
 ---HONEYDEWS: MARKET ABOUT STEADY 2/3 ctns GU 5s fr cond 10.00 6s 12.00-13.00  
 8s 13.00-14.00 HD 5s 13.00-14.00 6s 14.00 8s 13.00-14.00  
 ---MISC MELONS: OFFERINGS INSUFFICIENT TO QUOTE  
 ---WATERMELONS: MARKET ABOUT STEADY ctns per ctn FL Sangria 3s 25.00  
 Royal Sweet 3s 20.00 Red Seedless 4s 32.00 MX Sangria 3s 24.00 TX Allsweet 3s 25.00 4s 23.00-24.00 bins per melon FL Sangria 22-24 lb 5.50-6.00 28-30 lb 6.50-7.00 Royal Sweet 20-24 lb fr cond 4.00-5.00  
**NON-CITRUS FRUITS**  
 ---APPLES: MARKET ABOUT STEADY CONTROLLED ATMOSPHERE STORAGE ctns trypk WA WAExFcy Red Delicious 56s 14.50 one label 16.50 64s 14.50 one label 16.50 72s 14.50 one label 16.50 80s 14.50 one label 16.50 88s 14.50-15.00  
 14.50 one label 16.50 100s 14.50 100s 14.50  
 14.50-15.00 one label 16.50 Golden Delicious 72s fr cond 12.00 80s preferred labels 18.00-18.50 88s 15.00 one label 17.50 100s 16.50  
 fr cond 7.00-8.00 113s 14.50-15.00 Grammy Smith 80s 21.00 100s 20.00 U.S. ExFcy Red Delicious 64s 13.00 72s 13.00 88s 14.00 100s 14.00 113s 14.00 Golden Delicious 72s 13.00 80s 13.00 88s 13.00-14.00 mostly 13.00 100s 13.00-14.00 mostly 13.00 113s 13.00 Grammy Smith 56s 12.00-14.00 80s 18.50 88s 16.00-18.00 100s 16.50-17.50 WAExFcy Red Delicious 64s 12.00-13.00 mostly 13.00 72s 12.00-13.00 80s 12.00-13.00 88s 13.00-13.50 100s 12.00-13.50 113s 13.00-13.50 ctns 12 3-lb flmbgs NY U.S. Fcy McIntosh 2 1/2" up 11.00 Red Rome 2 1/4" up 10.00  
 ---APRICOTS: OFFERINGS NONE  
 ---AVOCADOS: MARKET STEADY ctns 2 lyr CA Hass 48s too few sales to quote ctns lse 48 sz 26.00  
 ---BANANAS: MARKET STEADY 40 lb ctns IMPORT 13.50 fair qual 11.00-12.00  
 sml 9.50-10.00 40 lb ctns bagged IMPORT 13.50 ctns institutional pk IMPORT 13.00  
 ---CHERRIES: 18 lb ctns CA AIR Larian 12 row sz & lgr 35.00  
 ---FRUITS OTHER: ctns 1 lyr trypk SP Loquat no offerings crtns 18.00  
 ---GRAPES: MARKET STEADY 18 lb lugs bgd CL BOAT Thompson Seedless fr qual & ord cond 3.00-5.00 Red Seedless med-lge 18.00-20.00 mostly 20.00 ord cond 3.00 Ribiers 14.00 Emperor 14.00 Red Globe 16.00 18 lb lugs wrpd CL

BOAT Thompson Seedless med-lge 16.00-20.00 some 22.00 one label 28.00 Red Seedless 20.00-22.00 few hias 24.00 ord cond 4.00-5.00 Red Globe lge 19.00-20.00 NEW CROP 22 lb lugs CA Perlette 34.00-40.00 mostly 34.00-35.00 MX  
 Perlette 32.00 20-21 lb lugs bgd MX Perlette 32.00  
 ---KIWIFRUIT: MARKET STEADY fls 1 lyr CA 42s 8.50 CL BOAT 39s 7.00-7.50  
 10 kg cntrs CL 30 sz 10.00  
 ---MANGOES: MARKET ABOUT STEADY fls 1 lyr MX Haden 10s 6.50-7.00 14s  
 6.50-7.00 Tommy Atkins 12s 6.00-7.00 14s 6.00-7.00 VZ Haden fr cond 12-14s 4.00-5.00  
 ---NECTARINES: OFFERINGS LIGHT ctns 2 lyr trypk CA California Well Matured  
 Mayfire 50s 33.00 occ hgr 56s 31.00 occ hgr 64s 29.00 occ hgr  
 25 lb ctns lse CA California Well Matured Mayfire 72 sz 28.00 occ hgr 96 sz 22.00 108 sz 20.00 GA Varieties 2"up 21.00-22.00  
 ---PAPAYA: 10 lb ctns HI AIR 12s 20.00  
 ---PEACHES: OFFERINGS LIGHT 1/2 buctns GA Florida King 1 7/8"up 13.00-15.00  
 ---PEARS: MARKET STEADY 40 lb ctns/boxes AG BOAT D'Anjou 100s 24.00 CONTROLLED ATMOSPHERE STORAGE std ctns wrpd OR U.S. One D'Anjou 100s 22.00

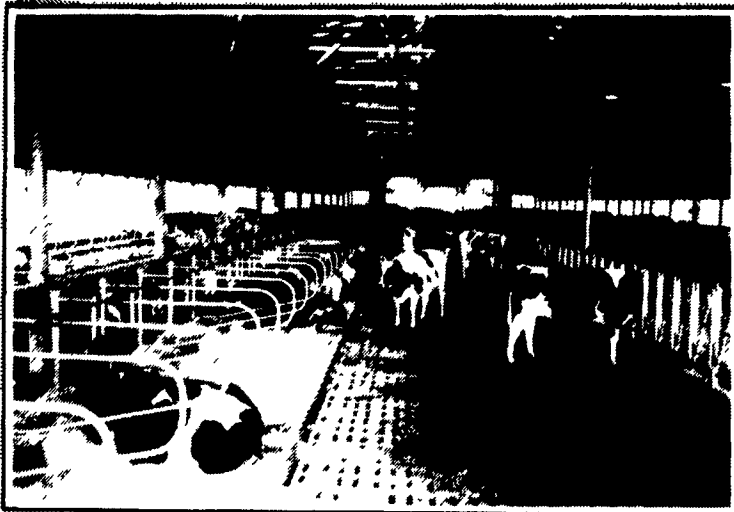
(Turn to Page A13)

## KEYSTONE CONCRETE PRODUCTS INC.

477 East Farmersville Rd.  
New Holland, PA 17557  
(717) 355-2361



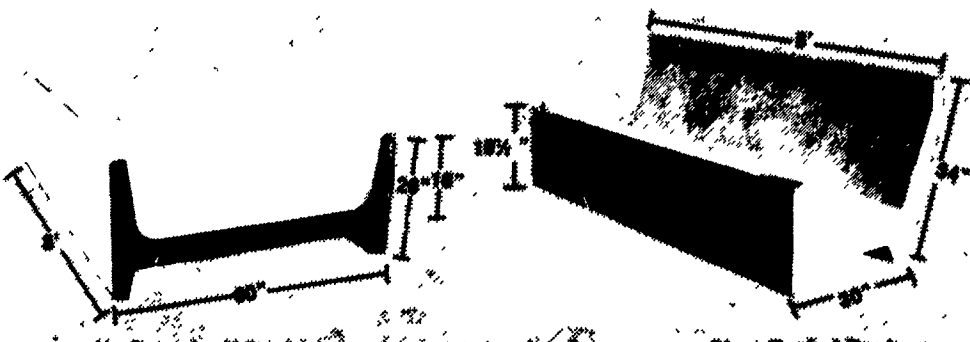
Concrete Slatted Free Stall Barn



Long Core Cattle Waffle Slats



Slatted Beef Barn



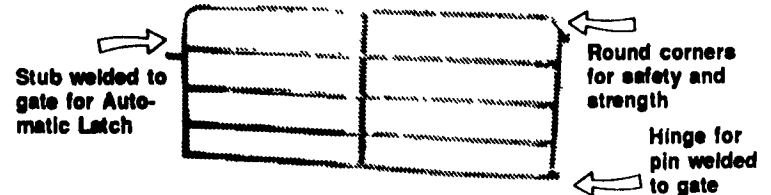
End Sections Available For Feed Bunks

Give us a call for more information on hog, beef, dairy and halter barns.



## STEEL BARN EQUIPMENT

### GATES and FENCING



Standard Heights For Gates & Fencing:

- 38" High - 4 Bar
- 48" High - 5 Bar
- 54" High - 6 Bar

All Gates & Fencing Made Of 1.9" Outside Diameter High Yield Steel Tubing with 13 Ga. Wall



## LAPP'S BARN EQUIPMENT

5935 OLD PHILADELPHIA PIKE, GAP, PA 17527

PHONE: 717-442-8134

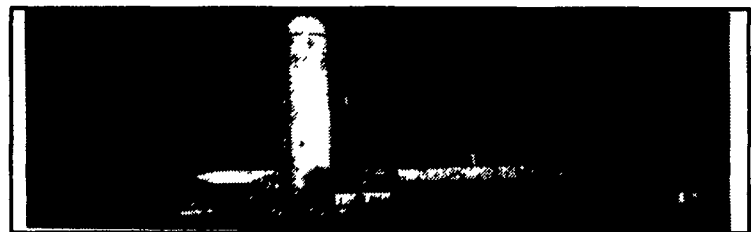
WE SERVICE WHAT WE SELL

— Radio Dispatched Trucks —

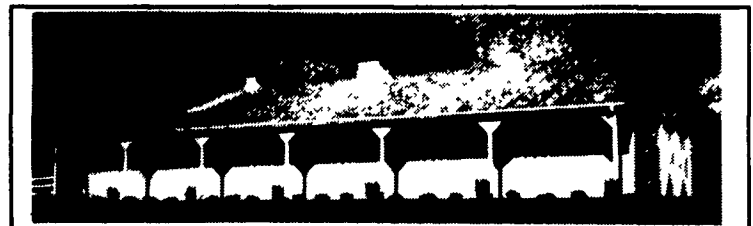


## AGRI-INC.

Custom Built Farm Buildings  
Designed To Your Needs



HEIFER BARN & TIE-STALL BARN



HORSE STALL BARN

Let Our Experience Work For You

- Dairy Complexes And Replacement Stock Facilities
- Horse Stall Barns And Riding Arenas
- Workshop And Machinery Storage Buildings
- Timber Column Building For Light Commercial



AGRI-INC. The Construction Professionals

151 E. Farmersville Road, Ephrata, PA 17522  
(717) 354-4271

Serving The Agriculture Industry For Over 25 Years

