

Middleburg Livestock Auction

MIDDLEBURG, PA
May 2, 1995

CATTLE 540... PDA ...Compared to last Tuesday's sale...sl. steers moderately active, about steady, cows 1.25 to 2.00 lower.

STEERS: High Choice and Prime 1250/1450 lbs. 65.00-67.25, Choice 1100/1475 lbs.

61.50-66.25, Select 55.00-60.00, few 61.50.

HOLSTEINS: High Choice and Prime 1200/1525 lbs. 59.50-61.50, Choice 1200/1550

lbs. 56.00-60.00 mostly 57.50-59.50, Select 50.50-54.50, few Standard 44.50-47.50.

HEIFERS: Choice 1050/1425 lbs. 57.00-62.75, two head 65.25 & 66.50, few Select

51.00-56.75.
COWS: Breaking Utility and Commercial 38.75-42.00, one 42.50, Cutter and Boning

Grantsville Livestock

Grantsville, Maryland
Report Supplied by Auction
Sat., April 29, 1995

STOCK BULLS AND STEERS 200-500 LBS. 55.00-80.00.

STOCK HEIFERS: 55.00-74.00.

SLAUGHTER STEERS GOOD TO CHOICE, NONE AVAILABLE; MEDIUM TO GOOD 50.00-63.00.

HOLSTEIN STEERS GOOD 50.00-54.50; LIGHT 44.50-51.00.

SLAUGHTER HEIFERS GOOD TO CHOICE 58.00-60.00; MEDIUM TO GOOD 48.00-56.00.

BULLS HEAVY 45.00-54.00, LIGHT 40.00-54.00.

COWS FEW HIGH DRESSING UP TO 42.00, UTILITY HOLSTEIN 36.00-40.00, CANNERS 30.00-35.00, CULLS 30.00 AND DOWN.

VEALS GOOD TO CHOICE 70.00-105.00, MEDIUM TO GOOD 55.00-68.00.

BOB CALVES: 45.00 AND DOWN.

HOLSTEIN BULL CALVES RETURN TO FARM 90-120 LBS. 90.00-115.00.

HOLSTEIN HEIFER CALVES RETURN TO FARM 100-120 LBS. UP TO 185.00.

BEEF CROSS CALVES RETURN TO FARM UP TO 155.00.

HOGS: TOP QUALITY 34.00-35.50; HEAVY 33.00-35.00, LIGHT 25.00-32.00, FEEDER PIGS BY THE HEAD 15.00-46.00.

SOWS: UP TO 29.00.
MALE HOGS: 18.00-22.50.

LAMBS: 70.00-106.00; CULLS 65.00 AND DOWN.
SHEEP: 22.00-37.50.

Utility 38.00-41.50, Canner and Low Cutter 33.25-37.75. Shells down to 28.00.
BULLOCKS: few Select and Choice 49.50-56.75.

BULLS: Yield Grade No. 1 1150/2020 lbs. 44.25-50.00, couple 52.75, few No. 2 1200/1600 lbs. 40.75-46.00.

FEEDER CATTLE: STEERS: Large Frame No. 2 425/700 lbs. 47.00-57.50; HEIFERS:

Medium Frame No. 1 390/780 lbs. 46.00-54.00; BULLS: Medium Frame No. 1 460/840

lbs. 41.00-56.00.
CALVES 148...VEALERS: couple Choice 60.00 & 69.00, few Utility 60/95 lbs.

35.00-53.00.
FARM CALVES: No. 1 Holstein bulls 85/125 lbs. 85.00-115.00, No. 2 75/115 lbs.

60.00-90.00; No. 1 Holstein heifers 85/125 lbs. 170.00-240.00, No. 2 80/100 lbs. 100.00-160.00.

Few beef cross bulls and heifers 75/100 lbs. 57.50-85.00.

HOGS 359...(05/01 & 02/95)..Bulk of supply sold on Monday and reported by the

auction. Barrows and gilts and sows were steady.

BARROWS AND GILTS: US 1-2 230/260 lbs. 36.50-37.75, US 1-3 220/260 lbs. 34.50-

36.00, US 2-3 220/265 lbs. 32.50-34.50.

SOWS: US 1-3 400/500 lbs. 25.00-29.00, 480/600 lbs. 28.75-30.50, US 2-3 380/480

lbs. 21.00-26.00.

FEEDER PIGS 159...US 1-3 20/40 lbs. 20.00-29.00, one lot 15 lbs. 15.00, one lot 50 lbs. 35.00. --- per head.

SHEEP 37...NEW CROP LAMBS: Choice 30/80 lbs. 85.00-100.00, two head 20 lbs.

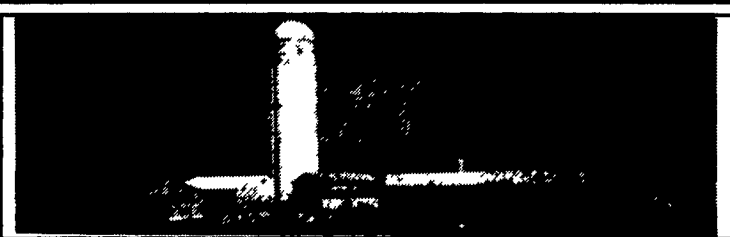
130.00.
WOOLED LAMBS: Choice 90/125 lbs. 60.00-92.00.

SLAUGHTER SHEEP: few 26.00-47.00.

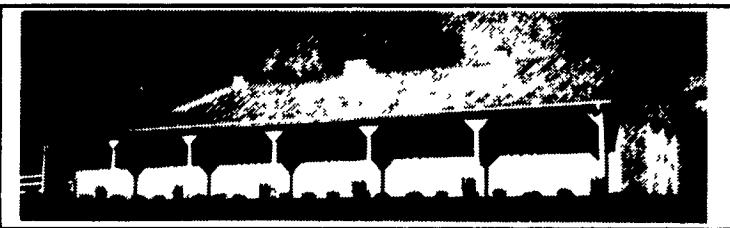
GOATS 19...Large 46.00-65.00, Medium 38.00-53.00, Small Kids 21.00-40.00. --- per head.

AGRI-INC.

Custom Built Farm Buildings
Designed To Your Needs



HEIFER BARN & TIE-STALL BARN



HORSE STALL BARN

Let Our Experience Work For You

- Dairy Complexes And Replacement Stock Facilities
- Workshop And Machinery Storage Buildings
- Horse Stall Barns And Riding Arenas
- Timber Column Building For Light Commercial



AGRI-INC. The Construction Professionals

151 E. Farmersville Road, Ephrata, PA 17522

• (717) 354-4271

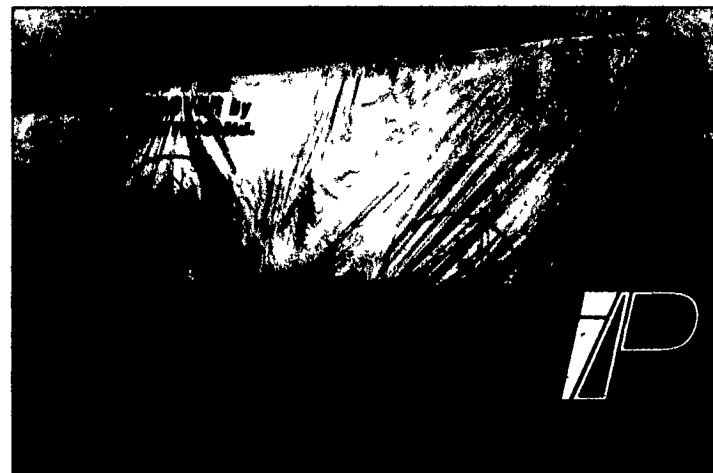
Serving The Agriculture Industry For Over 25 Years



BALE STACK COVERS

Heavy Duty

- 20 YEARS EXPERIENCE -



FOR PIPE HOLD DOWN

2" wide webbing loops (holding over 500 Lbs / loop) sewn into 5 layers of silver / black, U.V.I. treated-super tough poly-fabric.

FOR ROPE or PIN HOLD DOWN

Two spur eyelets each corner in 12" gussets, plus eyelets around perimeter at 3' o/c in 9"; 5 layer gussets (for uneven stacks).

The Versatility You Require in Hold Down Systems!

FOR YOUR NEAREST DEALER CALL:

1-800-387-7765 (USA East)

WANTED:

PALLET RACKS

717-865-7440

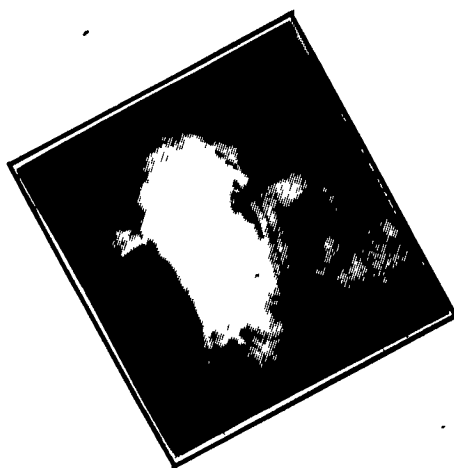
KIRKWOOD HAY AUCTION

Hay, Straw and Grain Auction
EVERY TUESDAY
11:00

Located Rt. 472 5 miles south of Quarryville or 6 miles north of Oxford corner of Rt. 472 and Noble Road.

Lloyd H. Kreider,
Auctioneer
AU-000513L
No out of state checks

I'M AMAZING.....



WE'RE SENSATIONAL



How will you know how great I am
unless you put me on TEST ????

Don't Wait Call



1-800-DHIA-TEST

1-800-344-8378