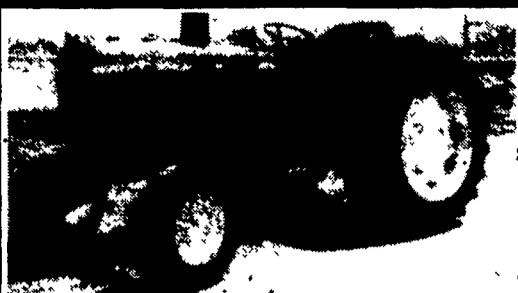


**EQUIPMENT FOR SALE**

- Agri-Chopper Round Bale Chopper Like New - Demo Unit ..... **\$11,000**
- 11 HP Bedding Chopper - New ..... **\$1,850**
- 13 HP Bedding Chopper - New ..... **\$2,165**
- 3 Pt. Hitch Bedding Chopper - New ..... **\$2,100**
- Lagoon Pump DeLaval - Used... **\$500**
- Feed Cart Wic 52 - Used..... **\$2,150**
- 12'4" Transfer Pump Houle - Used ..... **\$3,250**
- 42' Lagoon Pump Houle - New ..... **Call for Price**
- 3600 Gallon Houle Manure Tank..... **Call For Price**
- Houle Irrigation Pump For Manure ..... **Call For Price**

**MID-ATLANTIC**  
Oxford, PA  
**AGRISYSTEMS**

**1-800-222-2948**

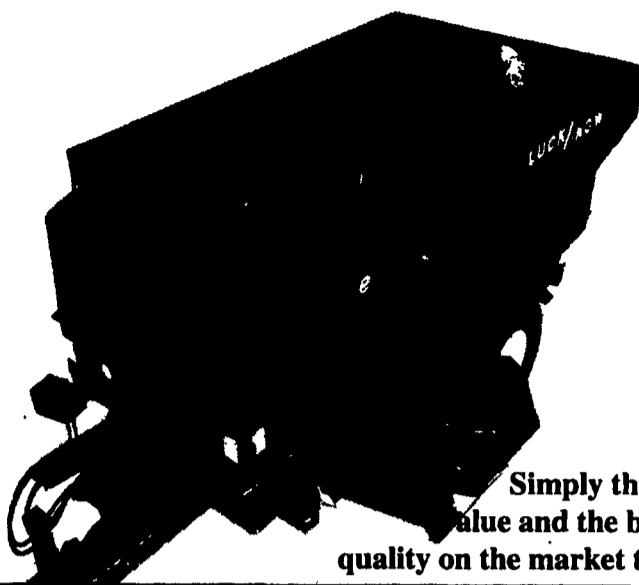


**JD 2640**  
Diesel Turbo, 88 hp. hi-lo, 2,500 hrs.  
**\$9,700**



**Gehl 3615 Skidloader**  
2,300 hrs., 33 hp. diesel, 54" bucket w/ teeth  
Aux. hyd. Very clean and tight.  
**\$6,650**

**THE LUCKNOW MIXER WAGON**



Simply the best value and the best in quality on the market today.

Call your nearest dealer today.

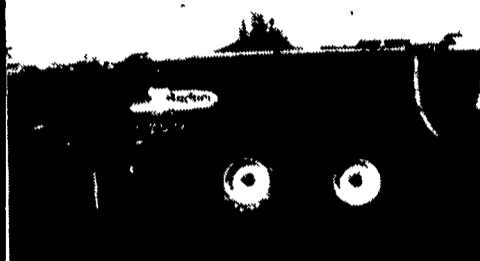
N.J., DEL, MD EASTERN SHORE  
**JONES DAIRY SERVICE**  
(609) 267-0198

MARTINSBURG, PA  
**WINELAND EQUIPMENT, INC.**  
(814) 793-2109

LEOLA, PA  
**M.M. WEAVER & SON**  
(717) 656-2321

**THIS WEEK'S SPECIAL**

**BADGER 4250 GALLON MANURE TANK**



**NEW** New size and options!

First One -  
**CASH PRICE - \$14,750**  
or try our demo!  
**CASH PRICE - \$11,500**

**Badger**  
WE SHIP UPS DAILY  
**Show-Ease Sales Co.**  
579 Willow Road, Lancaster, Pa. 17601  
**PHONE: (717) 299-2538**

**THIS IS IT!**



**The RH Series Dual Rake Hitch**  
"Quality at an affordable price"

- \* Cut field time and fuel consumption in half
- \* Easy to operate. Actually improves maneuverability in small three-corner fields
- \* Adjustable width settings for a wide variety of applications
- \* Two models to choose from.
- \* Optional bolt on hydraulic drive for PTO powered rakes and tedders

Prices start at \$1,495 for model RH126, but order early, supplies are limited!



**Enarjo Farabaugh Mfg.**

756 Columbia St. Loretto, Pa. 15940  
For more information, contact John or Art at:  
**(814) 472-8068 or (814) 472-5973**

**SHAYER**  
Making hard work easy



**SHAYER POST DRIVERS**

- Set each post in seconds
- Crank or hydraulic base plate for plumb-true driving
- Front or 3-point mounting
- Square post capacity of 7 1/8" to 10 7/8" with a maximum post length of 10'
- Drives steel, wood or even a milroad tie.

**SPRING SPECIAL**  
**HD 8's - \$1,125 Complete**  
**HD 10's - \$1,750 Complete**  
**Taneytown Farm Equipment**  
Route 832 - 1 mile east of Taneytown, MD  
**410-751-1500**

**Excellent Ford Tractors**

- TW-10, DP, weights, local trade, 5,100 hrs.
- 7710, cab, air, 18.4x34, 1,600 hrs.
- 7710, DP, 18.4x34, dual remotes, 1,800 hrs.
- 7610 II, cab, air, 1990, 800 hrs.
- 7600, DP, dual remotes, 18.4x34, 3,100 hrs.
- 7000, cab, flat deck, DP, 540 & 1000 RPM
- 6610 II, 4WD, DP w/Ford loader, 1,000 hrs.
- 6610 II, cab, 18.4x34, 600 hrs.
- 6610 II, DP, dual remotes w/Ford QT loader, 1,000 hrs.
- 6600, factory cab, DP, dual remotes, 4,400 hrs.
- 5610 II, canopy, DP, dual deluxe remotes, 1,600 hrs.
- 5610, DP, 18.4x30, 1,800 hrs.
- 4610 II, 4WD w/Ford QT loader, 1,000 hrs.
- 4000, gas, 8 spd w/Dunham QT loader
- 4000, diesel, 8 spd., PS, w/QT loader
- 4000 SU, gas, 8 spd, 14.9x28
- 3930, 4WD, 14.9x28 w/Allied 394 loader w/230 hrs.
- 3000, gas, 8 spd., PS w/loader, 1,300 hrs.
- 3000, gas, 8 spd., PS, 13.6x28, 3,200 hrs.
- NH 565 LX, diesel skid loader, 10 hrs.
- NH L425, gas skid loader
- JD 2350, hi-low, 2,500 hrs.
- JD 2755, w/Rollbar, hi-low, dual remotes, 1,400 hrs.

**Equipment**

- FNH 492 haybine, w/hyd. swing, ilke new
- Ford 515 3pt 7' sickle bar mower
- Sauder snow blade
- Weights & roll bars to fit most Ford tractors
- Ford 8' 3 pt. stone rake w/gauge wheels
- 18.4x34 duals

**Ford Loaders**

- 7410 QT fits 2WD & 4WD, 5610 thru 7610
- 7210 QT fits 2 WD, 5000 thru 7610
- 777D QT fits 2WD, 5000 thru 7610
- 772 QT fits 2WD, 5000 thru 7610
- Farm Hand XL740 QT fits 2 & 4WD, 5000 thru 7610

All Tractors Tested On Our Farms.  
-Please Call For Appointment-

**Burkholder Bros.**  
Lebanon, PA  
**717-272-2352 717-949-2123**  
Lloyd Leon

**HYMAN EQUIPMENT**

**(410) 337-3570**

BALTIMORE, MD

Call Alan Hyman anytime

5,000 lb. Clark <b>\$4,500</b>	Athey Rough Terrain <b>\$14,000 &amp; \$16,000</b>	15,000 lb. Hyster <b>\$15,000</b>	2500 lb. Hyster <b>\$3,000 &amp; \$4,500</b>	Clark Ranger 4WD <b>\$7,000</b>

**SOLID TIRE FORKLIFTS**

- 6,000 Lb. Yale LPG, 22' lift, vg cond, fresh eng. Chrys plant 6, auto trans ..... \$8,000
- 5,000 Lb. Clark, LPG, 9' lift, VG, See Photo, auto trans ..... \$4,500
- 5,000 Lb. Hyster, new 1987, LPG, 15' lift, Sideshift, excellent cond..... \$10,000
- 5,000 Lb. CAT, LPG, Sideshift, 12' lift, vg, auto trans ..... \$5,000
- 5,000 Lb. Hyster LPG, 15' lift, good, auto trans ..... \$4,000
- 4,000 Lb. A/C gas, 15' lift, smokes ..... \$2,000
- 3,000 Lb. CAT, LPG, 9' lift, auto trans, nice ..... \$3,000

**ELECTRIC FORKLIFTS (w/charger)**

- 6,000 Lb. Baker, 12' lift, ok ..... \$3,500
- 5,000 Lb. Clark, 8' lift, vg ..... \$3,000
- 2,500 Lb. Clark elec., 14' lift, good ..... \$2,500
- Electric Pallet Jacks (no chargers) ..... \$500+

**PNEUMATIC FORKLIFTS**

- 15,000 Lb. Trojan, Articulated Loader w/work attach, rbt Cummins ..... \$17,500
- 15,000 Lb. Hyster, dual wheel-Perkins diesel, 12' lift, sideshift, See Photo ... \$15,000
- 12,000 Lb. Athey, Rough Terrain, 4WD + Steer, 4.53 Detroit diesel, 12' lift, (2) avail, one w/rebuilt eng ..... See Photo ..... \$14,000 & \$16,000
- 8,000 Lb. Erikson, LPG, Sideshift, ..... \$3,500
- 6,000 Lb. Clark Ranger, 4WD, very nice, ..... See Photo ..... \$7,000
- 6,000 Lb. Baker, dual wheels, 11' lift, vg ..... \$6,000
- 6,000 Lb. AC, Dual wheel drive, 11' lift, runs ..... \$6,500
- 6,000 Lb. Towmotor, old but runs ..... \$2,500
- 2,500 Lb. Hyster, 3 wheeler, 10' lift, (2) avail, one w/rebuilt eng  
See Photo ..... \$3,000 & \$4,500