

Welsh saddle tanks for tractor w/pump and electric controls, extra nice, \$350. (717)786-2839.

Troy Bilt rototiller, Horse model, furrower/hiller, snowplow, chains, very good condition, \$1195. 610-286-5862

NELSON PARTS
250 LOVEJOY RD PENN YAN NY 14527
(800)730-4020 (716)526-6705

USED JOHN DEERE TRACTOR PARTS
4020, 3020, 2520, 4010, 3010, 2010

USED JOHN DEERE ENGINE PARTS
2940, 2840, 4430, 4230, 4030, 5020, 4020, 3020, 2520, 4010, 3010, 2010

USED PLOW PARTS
JD 2500, 1450, 360, 350, 145 OLIVER 575, 548, 568, IH 700, 710, 720, MF 880, AC 2000

Need Parts Fast?
We specialize in John Deere Tractor and Engine Parts - new, used and rebuilt

WE SHIP U.P.S. - R.P.S. & TRUCK FREIGHT
1(800)730-4020
(NO TWO CYLINDER PARTS)

Excellent Ford Tractors

- TW-10, DP, weights, local trade, 5,100 hrs.
- 7710, DP, 18.4x34, dual remotes, 1,800 hrs.
- 7600, DP, dual remotes, 16.9x38, 2,500 hrs.
- 7600, DP, dual remotes, 18.4x34, 3,100 hrs.
- 7000, cab, flat deck, DP, 540 & 1000 RPM
- 6610 II, 4WD, canopy w/Ford loader, 1,000 hrs.
- 6610 II, cab, 18.4x34, DP, 1,600 hrs.
- 6600, factory cab, DP, dual remotes, 4,400 hrs.
- 5610 II, canopy, DP, dual deluxe remotes, 1,600 hrs.
- 5610, DP, 18.4x30, 1,800 hrs.
- 4610 II, 4WD w/Ford QT loader, 1,000 hrs
- 4000, diesel, 8 spd., PS, 13.6x28, 3,200 hrs.
- 4000 SU, gas, 8 spd, 14.9x28
- 3930, 4WD, 14.9x28 w/Allied 394 loader w/230 hrs.
- 3000, gas, 8 spd., PS w/loader, 1,300 hrs.
- 3000, gas, 8 spd., PS, 13.6x28, 3,200 hrs.
- NH 565 LX, diesel skid loader, 10 hrs.
- NH L425, gas skid loader
- JD 2350, hi-low, 2,500 hrs.
- JD 2755, w/Rollbar, hi-low, dual remotes, 1,400 hrs.

Equipment

- FNH 492 haybine, w/hyd. swing, like new
- Ford 515 3pt 7' sickle bar mower
- Sauder snow blade
- Weights & roll bars to fit most Ford tractors
- Ford 8' 3 pt. stone rake w/gauge wheels
- 18.4x34 duals

Ford Loaders

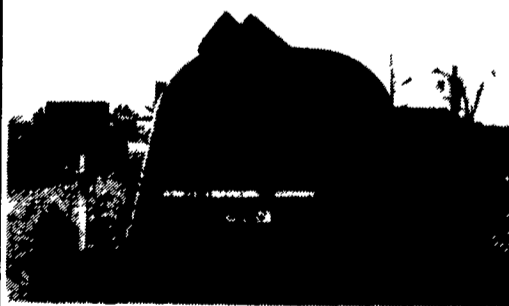
- 7410 QT fits 2WD & 4WD, 5610 thru 7610
- 7210 QT fits 2 WD, 5000 thru 7610
- 777D QT fits 2WD, 5000 thru 7610
- 772 QT fits 2WD, 5000 thru 7610
- Farm Hand XL740 QT fits 2 & 4WD, 5000 thru 7610

All Tractors Tested On Our Farms.
-Please Call For Appointment-

Burkholder Bros.
Lebanon, PA

717-272-2352 717-949-2123

HOW YOU CAN GET UP TO 15% MORE IN THE BAG WITH THE KELLY RYAN SELF-CLEANING CENTERLINE BAGGER



- Pack more punch from the center with less h.p. for tighter and more uniform bags of feed
- 7', 8' & 9' diameters 2 wh standard (up to 12 by special order)
- 1/2" cables, 150' and 200'
- No hydraulics. Rust-free, chrome disc mechanical brake
- Tongue centered for close bag spacing and road travel
- Oil bath gearbox & drive chain
- #160 roller chain main rotor drive
- Gearbox 540 or 1000 rpm PTO
- Safety-first, V-belt driven conveyor for side feeding
- Design permits bagging nearly twice as fast as other models
- Adapts quickly for road transport
- Frontload dump hopper available
- 6' Rotor 3-4' above ground
- Many more desirable features

SILOFLEX SILAGE BAGS
CUSTOM BAGGING-All items USA made.
AG PRODUCTS CO., INC.

717/328-3177



Dependable farm equipment since 1945

Spring Into Summer Sale

- | New items (1 only) | List | Sale |
|---|---------|---------|
| 2 Star tedder | \$1,940 | \$1,550 |
| 1026 Bush Hog | | |
| 10-1/2 ft. Trailer type | \$6,320 | \$4,760 |
| 5 ft. Bush Cutter Trailer | \$1,030 | \$740 |
| 3 pt. hitch fertilizer spreader 1000 lb | \$475 | \$395 |
| Hawk Built | | |
| 217 bu. spreader | \$7,800 | \$5,160 |
| Used Equipment | | |
| MF 12 ft. disc | | \$2,000 |
| Tandem Axle dump trailer, A-1 | | \$2,840 |
| Papec Wagon, nice gear | | \$1,200 |
| IH 444, diesel, | | |
| 3 pt. hitch and hydraulics | | \$4,460 |
| Tanco Wrapper, like new, 2 years old | Call | |
| (4) 4 Star tedders | \$1,550 | \$2,600 |
| NI Blower 622 Shaker | | \$1,000 |

NORTHEAST DISTRIBUTORS & EQUIPMENT

Rt. 106 W. Clifford, Pa. 18413
717-222-9090 or 9020

- Farmall H.....\$1,000
- Farmall A w/snow plow, new paint.....\$2,500
- Case IH 585, 3000 hrs., 2250 loader, ROPS & Roof, shuttle shift.....\$16,900
- (3) IH 1086, cab & air, all excellent.....\$17,900
- (3) IH Cabs.....\$200, \$300, \$400
- IH 2 Post roll Bar & Roof for 686.....\$950
- IH Hydro 70, Rebuilt Engine & Hydro, New Rubber & Paint.....\$11,500
- IH 986, cab & air.....\$16,900
- IH 544 Utility.....\$6,900
- IH Super M.....\$1,700
- IH 806, 1-owner, very good condition...\$7,500
- IH 1066 w/cab, new TA, clutch & paint.....\$12,500
- (2) IH 856, super sharp!.....\$9,000
- IH 1066, low hours, new paint, super sharp.....\$12,500
- IH 460 utility w/loader.....\$4,900
- Case IH 1120 4 WD w/Loader, blade & mower, 90 hours.....\$13,700
- IH 240 w/snow plow.....\$2,500

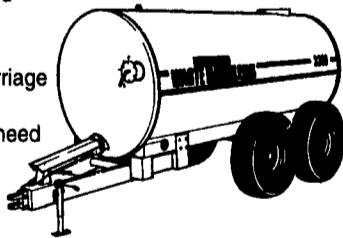
Financing Available
717-776-5515 Day
717-776-5291 Evenings
JEFF SHOWAKER

Clean off-the-farm, field test tractors
Most Reconditioned And Sold With Warranty
Positively no out-of-state Personal checks

VAN DALE WASTE HANDLERS

Vacuum Tank Spreader

- 10 Year pro-rated Tank Body Warranty
- 5 Year Undercarriage Warranty
- Everything you need in a tank spreader



High Capacity Lagoon Pumps
Trailer & 3 Pt. Mounted

Tough, Rugged and Reliable - See What A REAL Van Dale Lagoon Pump Can Do

Van Dale Tank Spreaders and Lagoon Pumps
In Stock
For RENT or SALE

Sales & Service
ROVENDALE AG & BARN EQUIP.
WATSONTOWN PA 17177
717-538-9564 OR 717-742-4226
Exit 31 I-80 to E-180 Watsontown Exit
Hours: Mon-Fri 8 to 5 Sat 8 to 1

USED TRACTOR PARTS, also rebuilt clutches and torques. We ship UPS. Hill-T Farm Sales - Service, 4295 Richmond Palestine Road, New Madison, Ohio 45346. 513-548-0718.

Tillage, Forage, and Hay Equipment. Medium Dairy going out of Business. (610)681-4134.
TRACTOR TIRE Firestone 18.4x32, new, \$300. 410-833-9091

WEED WIPER, 15' Century, like new, \$600. 15hp, 20hp, 30hp electric motors, 3ph \$300 each. 12' stake body dump \$600. Wilde 8' tree topper/hedger, all hyd., like new, \$4,000. (717)382-4878.

TANEYTOWN FARM EQUIPMENT

Route 832 - 1 mile east of Taneytown, MD
410-751-1500

Bush Hog® King Cutter



Brillion 30' Wingfold Cultipacker \$2,900



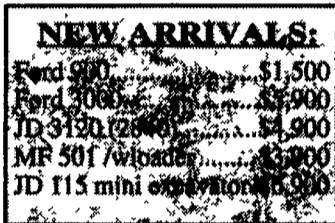
JD 1020, gas, w/48 loader, as clean as they come!.. \$7,900



Case 830 gas, Case-O-Matic, excellent condition \$2,500



OMC Skid Loader



- NEW ARRIVALS:**
- Ford 900.....\$1,500
 - Ford 3000.....\$2,900
 - JD 3120 (2800).....\$4,900
 - MF 501 w/loader.....\$3,000
 - JD 115 mini excavator.....\$2,900



Ford 5550 Tractor/Loader/Backhoe \$6,900

- INT #56 planter \$950
- JD 3020 S C dual outlets, runs exc \$5,750
- Long 550 new rubber \$3,500
- JD 3020 \$6,900
- JD 2510 \$3,900
- Oliver 55 \$2,500
- AC 180D \$4,900
- AC D17D \$2,900
- Backhoe, 3 pt w/pump \$2,250
- NH 850 Round Baler \$2,000
- Vermeer round Baler \$2,000
- Chisel Plow, 10 Tooth \$1,250
- Chisel Plow, 7 Tooth \$700
- AC 6RNo-Till Corn Planter \$850
- Ford 2R Corn Planter \$775
- NH 279 Manure Spreader \$1,500
- MC Rotary Scythe \$650
- Woods 20' Batwing, Like New \$6,500
- JD 640 Rake \$1,200
- NH #8 Wagon, Like New \$2,500
- Shaver drivers HD8 \$1,125 HD10 \$1,750
- 10' Bush Hog® mowers \$3,695
- 20% off list on all Bush Hog® loaders..... Call For Price

Best Buys In Used Equipment

TRACTORS

- Case IH 2140 MFD Vineyard/Orchard Tractor
- Case IH 2130 MFD Vineyard/Orchard Tractor
- Case IH 885 Tractor w/2255 Loader
- Case IH 7120 MFD w/Duals, Clean, Just Traded
- Case IH 2294, MFD, w/Duals
- Case IH 5140, MFD, w/Cab
- Case IH 7120 MFD w/duals, 1992
- Kubota L245 high clearance w/cultivators
- Ford TW25 MFD, w/Cab



COMBINES & HEADS

- Case IH 863 Cornhead
- IH 820 22 1/2' grain head
- IH 1020 15' grain head
- IH model 963, 6R corn head
- IH 1420 axial flow w/13' 820 header
- IH 844 4RW corn head
- IH 1420 axial flow combine, 15' 820 head & 844 4R corn head
- 1994 Case IH 1644 Axial Flow w/17 1/2' 1020 Head, 593 Hours
- 1992 Case IH 1640 Axial Flow w/15' 1020 Head, 700 Hours

MISCELLANEOUS

- Bauer Rainstar 110-350P
- JD 3 Pt. Hitch Rotary Hoe 20' Wide
- Mechanical 3 Pt. Hitch 3R Transplanter
- (4) IH 295 Planter units, w/extra press wheels
- IH Cyclo planter, 6x30" rows w/fertilizer attachment
- AC no-till 9R-18" planter
- JD 17' manual fold disc harrow
- Case IH 5100 Grain Drill 21x7
- Cub Cadet 1250 w/44" mower deck
- Case IH 165 5b 16" roll over plow
- AC 616 hydro lawn tractor w/44" deck
- Hale 50 FB2, PTO Irrigation Pump With Couplers
- FMC 3 Pt. Hitch Sprayer
- Cub Cadet 582 Garden Tractor
- White 252 Disc Harrow w/Dual Wheels, 13'10"
- JD 7b On-Land Plow
- Case IH 5717 Chisel Plow, 17'
- White 6b Semi-Mounted Plow
- Unverferth Header Cart
- Brittania Boom Sprayer

HAY & FORAGE

- NH 782 Forage Harvester
- Pequea 1006 10 ton wagon
- NH 268 Square Baler
- NH 680 Manure Spreader
- NH 1495 Self-Propelled Haybine

Farm-Rite inc.
Agricultural Equipment, Supplies & Services
SHILOH, N.J.
1-800-752-6373

© 1995 CASE CORPORATION

