

# CARTER

## Lumber

### BEST DEALS IN TOWN

We Deliver  
Anywhere In-  
PA, MD, DE, NJ,  
NY, CT, VA, W VA



#### PRESSURE TREATED LUMBER

• Resists rot • decay • 30 yr. warranty  
• Great for outdoor projects .40 retention

Grade #2	8'	10'	12'	14'	16'	18'	20'	22'	24'
2x4	2.59	3.69	3.99	5.19	6.59	—	—	—	—
2x6	3.79	5.19	6.19	7.69	9.39	—	15.95	—	—
2x8	6.39	7.89	9.89	10.79	14.49	—	22.95	—	—
2x10	7.49	9.19	13.69	19.89	20.59	—	33.95	—	—
2x12	11.79	12.49	20.89	21.89	25.29	—	45.95	—	—
4x4	4.99	8.99	10.69	11.69	14.49	—	—	—	—
4x6	11.29	12.99	16.89	18.49	24.59	31.69	39.19	—	—
6x6	17.99	20.49	22.99	26.49	35.49	48.99	63.49	72.99	82.99
2x6 T&G	5.19	6.49	7.89	9.69	11.59	—	—	—	—

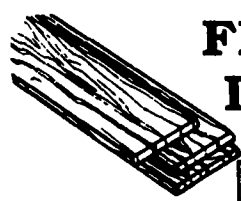


#### Villager SOLID VINYL SIDING

Double 4" **\$36.49** 100 Sq. Ft. **\$41.95** 100 Sq. Ft.  
 Double 4" German Lap **\$41.95** 100 Sq. Ft. **\$45.95** 100 Sq. Ft.  
 Villager Select (SPECIAL ORDER) **\$50.99** 100 Sq. Ft. **\$52.99** 100 Sq. Ft.

**\$200** PER SQ.  
INSTANT REBATE  
ON ALL STYLES  
AND COLORS  
ADVERTISED  
PRICES INCLUDE  
REBATE

Other Styles and Colors Available  
Complete Line Of Vinyl Soffit And Trim Available



#### FENCE BOARDS DECK PLANKS

• #2 .40 CCA  
pressure  
treated

	8'	10'	12'	14'	16'
5/4x6	4.69	5.39	6.29	7.29	8.99



#### 4'x8' PLYWOOD

ASSOCIATION GRADE STAMP

	3/8"	1/2"	5/8"	3/4"
GIS EXTERIOR YP	16.49	19.59	23.39	28.49
CD EXTERIOR	10.69	11.59	15.79	19.99
T&G UNDERLAY	—	—	20.19	23.29



#### FIBERGLASS SHINGLES

• Standard, self sealing shingles

• 20 yr. Warranty	Bundle	100 Sq. Ft.
	<b>\$6.41</b>	<b>\$19.23</b>
• 25 Yr. Warranty	Bundle	100 Sq. Ft.
	<b>\$7.63</b>	<b>\$22.89</b>



#### DIMENSION LUMBER

SPF

	8'	10'	12'	14'	16'	18'	20'
2"x4"	2.00	2.67	3.08	3.45	4.85	5.22	5.80
2"x6"	3.08	3.95	4.74	5.60	7.20	8.10	9.00
2"x8"	4.37	5.47	6.88	7.84	9.49	10.92	12.13
2" 10"	7.37	9.00	10.90	13.77	15.73	18.00	19.67
2"x12"	9.92	12.00	15.48	17.50	20.00	23.22	25.80

#### METAL ROOFING & SIDING



STRONG RIB ALUMINUM **\$51.50** 100 SQ. FT. 36" NET COVERAGE

SPECIAL GRAND RIB 3 PAINTED STEEL 29 Gauge **\$54.00** 1 Reg. \$63.00 100 Sq. Ft. 36" Net Coverage

GRAND RIB 3 GALVANIZED 29 GAUGE **\$44.50** 100 SQ. FT. 36" NET COVERAGE

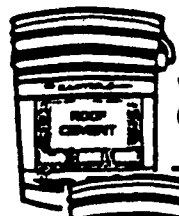
1/4" CORRUGATED GALVANIZED STANDARD **\$46.25** 100 SQ. FT. Not In Stock

Ask For Low Prices On Roof Trusses

CUSTOM LENGTHS AVAILABLE.

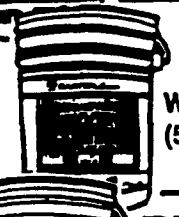
NO EXTRA COST

#### ROOF COATINGS PLASTIC



W0405 (5 GAL.) **\$14.99**

#### FIBERED



W0105 (5 GAL.) **\$14.99**

#### RUBBERIZED



W0205 (5 GAL.) **\$14.99**

#### ALUMINUM



A2105 (5 GAL.) **\$35.99**

#### USED RAILROAD TIES

7" x 9" x 8 1/2"

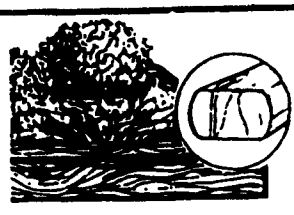
**\$8.39**



#### LANDSCAPE TIMBERS

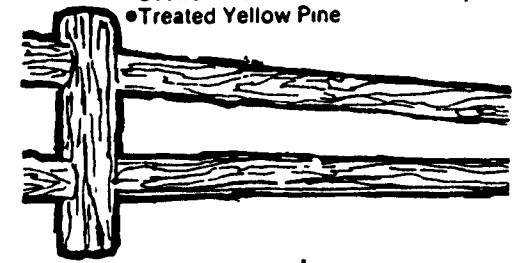
• Full size  
• Treated lumber  
8 Ft.

**\$3.19 ea.**



#### SPLIT RAIL FENCE

• Section includes 2 rails & 1 line post  
• Treated Yellow Pine



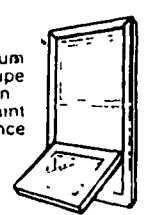
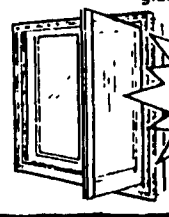
Priced per 11' section ..... **\$15.99**

#### CIERRA WINDOWS

##### WINDOWS

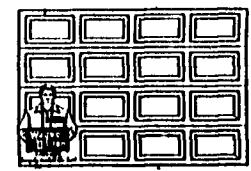
• Maintenance free aluminum clad exterior in white taupe or sandalwood • Western Pine interior, ready to paint or stain • High performance glass & grilles available

CASEMENT 1" Double Insulating Glass



DOUBLE HUNG 3/4" Double Insulating Glass

**43% OFF LIST**



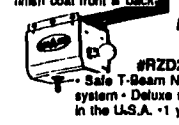
#### RAISED PANEL STEEL GARAGE DOORS

Foamcore™ 37  
\*Insulated steel sections • 10 year warranty • White finish coat

**\$245.00** 9' x 7' #RP37

**\$375.00** 9' x 7' #RP36

Thermowayne™ 36  
• Double wall steel sections • Fully insulated Two reinforcing struts per section • 10 year warranty • White finish coat front & back



#### 1/4 HP CHAIN DRIVE GARAGE DOOR OPENER

#RZD225  
• Safe T-Beam Non-contact reversing system • Deluxe remote controller • Made in the U.S.A. • 1 year limited warranty **\$119.99**

PRICES GOOD THROUGH MAY 13, 1995



<b>LANCASTER, PA</b> 2275 Old Phila. Pk. Rt. 340 East 717-397-4829 Mon.-Thurs. 7:30-6 Fri. 7:30-8 Sat. 7:30-4	<b>CARLISLE, PA</b> 1840 Harrisburg Pk. US 11 717-245-0404 Mon.-Fri. 7:30-6 Sat. 7:30-4 Sun. 9-3	<b>CHAMBERSBURG, PA</b> 2155 Wayne Rd. Rt. 316 East 717-263-0822 Mon.-Fri. 7:30-6 Sat. 7:30-4 Sun. 9-3	<b>NORTHUMBERLAND, PA</b> RD 1, US 11 North 717-473-8311 Mon.-Fri. 7:30-6 Sat. 7:30-9 Sun. 9-3	<b>HARRISBURG, PA</b> 7365 Allentown Blvd. 717-545-4941 Mon.-Fri. 7:30-6 Sat. 7:30-4 Sun. 9-3
---	--	--	---	--

All Items Shown May Not Be In Stock At All Locations