

Weekly New York Egg Market Northeast Quotes

From Friday, April 14 to Thursday, April 20

	FRI.	MON.	TUES.	WED.	THURS.
WHITE					
JUMBO	.73	.73	.73	.73	.73
EX. LARGE	.72	.72	.72	.72	.72
LARGE	.71	.71	.71	.71	.71
MEDIUM	.62	.62	.62	.62	.62
PULLETS	.52	.52	.52	.52	.52
OFF GRADE	.59	.59	.59	.59	.59
BROWN					
EXTRA LARGE	.79	.79	.79	.79	.79
LARGE	.75	.75	.75	.75	.75
MEDIUM	.60	.60	.60	.60	.60
OFF GRADE					
UNDERGRADES AND CHECKS	.20	.20	.20	.20	.20

BREAKING STOCKS: FRI. 42-44 LBS. 25-26, 48-50 LBS. 33-35, 50 LBS. AND UP 35-36.

North Atlantic Shell Eggs

Thursday, April 20, 1995
Report Supplied by USDA

MARKET COMMENT: THE MARKET TONE WAS ABOUT STEADY FOR THE LARGE SIZES, AND STEADY FOR MEDIUMS. CARTONED EGG MOVEMENT INTO RETAIL OUTLETS WAS FAIR TO FAIRLY GOOD, AND HAD SLOWED FROM EARLY WEEK PERIOD. SUPPLIES OF THE LARGE SIZES WERE ADEQUATE TO FULLY ADEQUATE AND AVAILABLE, AND MEDIUMS WERE TIGHT TO INSTANCES ADEQUATE. BREAKING STOCK SUPPLIES WERE ADEQUATE

FROM REGULAR SUPPLIERS, AND DEMAND FOR EXTRA EGGS WAS LIGHT. A EXTRA LARGE .67-.69, LARGE .65-.67, MEDIUM .56-.57.

NE Chicken Parts 1&2

EDISON, NJ
APRIL 19, 1995

NORTHEAST BROILER/FRYER PARTS - PART 1 FEDERAL-STATE
Trucklot buying interest was irregular. Offerings were generally adequate although a difference of opinion was developing in regards to boneless skinless breasts. Bone-in breasts were more readily available, legs and leg quarters were fully

adequate with quarters often tough to find a home, and wings cleared well. The market tone was steady but underlying sentiment was growing with cautiousness.

PRICES PAID PER POUND, ICE PACKED AND CO2 PACKED BROILER/FRYER PARTS, DELIVERED TO FIRST RECEIVERS IN POOL TRUCKLOT AND TRUCKLOT QUANTITIES.

ITEM CURRENT NEGOTIATED TRADING*

BREAST - B/S (W & W/O TENDERS) 155 BREAST - WITH RIBS 74-75 BREAST - LINE RUN 74 LEGS 46-47 LEG QUARTERS (BULK) 29-30 DRUMSTICKS 41-42 THIGHS 40-41 WINGS (WHOLE) 64-65 BACKS AND NECKS (STRIPPED) 10-12 LIVERS (5 POUND TUBS) 25 GIZZARDS (HEARTS) 55

INCLUDES NEW YORK CITY METROPOLITAN AREA, NORTHERN NEW JERSEY, MASSACHUSETTS, CONNECTICUT, RHODE ISLAND, AND PENNSYLVANIA (NORTHEAST OF HARRISBURG). * TODAY'S NEGOTIATED SALES AS OF 11:30 A.M.
PREPARED: 19-APR-95 11:30 AM E ML

For additional information, please call (908) 985-8880.

Delmarva Broiler

EDISON, NJ
APRIL 19, 1995

DELMARVA BROILER/FRYER MARKET. FEDERAL-STATE
Movement of ready-to-cook whole birds was fair to good and was sufficient to keep the bulk of sellers offerings in fairly good

New York Egg Market

ATLANTA, GA
APRIL 19, 1995

NEW YORK EGGS, APRIL 19, 1995.
FEDERAL-STATE

Prices were unchanged. Trade sentiment remained about steady. Demand slowed as stores refilled, and overall movement was light to fairly good. Supplies of the large sizes were generally adequate or available, and mediums were short to adequate.

PRICES TO RETAILERS, SALES TO VOLUME BUYERS, USDA GRADE A AND GRADE A, WHITE EGGS IN CARTONS, DELIVERED STORE DOOR, CENTS PER DOZEN.

RANGE EXTRA LARGE 69-71
LARGE 66-69 MEDIUM 57-60

PREPARED: 19-APR-95 11:38 AM E CLB
For additional information, please call (404) 347-4121.

Middleburg Hay

Middleburg, PA
April 18, 1995

Report supplied by auction
55 LOADS, 34 LOADS OF HAY.
ALFALFA: 85.00-135.00.
MIXED HAY: 60.00-145.00.
TIMOTHY: 65.00-125.00.
STRAW: 6 LOADS, 70.00-125.00.
EAR CORN: 10 LOADS, 72.00-80.00.
OATS: 5 LOADS, 1.95-2.55 BU.

NOTICE Special Consignments

April 26, 1995 Sale Time 12:00 Noon

For more information call
Walter M. Dunlap & Sons, Inc.
Tel. 717-397-5136
Fax 717-397-6109

GOOD'S

RECEIVING STATION

All market Hogs Received At Station
Must Be Scheduled One Week In Advance

Rt. 897 - 1 mile North of Fivepointville
(717) 445-5776 • FAX (717) 445-6099

- Market Hogs
- Sows • Boars
- Cull Pigs

NOW RECEIVING:
Mon. 6:30-11 am
Fri. 6:30-10 am



CRAIG'S HOG BUYING STATIONS

Four Locations To Serve You!

Receiving Butcher Hogs:



SHIPPENSBURG
Wed. & Sat.
(717) 532-5224



GREENCASTLE
Mon., Wed., Sat.
(717) 597-2315



MARTINSBURG
Saturday
(814) 793-2311



THOMASVILLE
Wednesday
(717) 792-2248

- No Advance Scheduling
- No Consignment Too Small Or Too Large
- Weighed & Paid For Upon Arrival
- Competitive Prices Paid For Light Weight Hogs, Sows & Boars

For More Information Contact Jeff Craig At (717) 532-5224

TELMARK INC.

Your Lease Financing Source
for over 30 years.

Telmark leasing offers:

- Customized payment schedules
- Experienced local representatives
- Estate & income tax planning
- Low upfront costs

Mike Fullam
(717) 966-9202



Ken Darlington
(717) 733-3532



Lisa Sonnen
(717) 866-9217



Jody Underwood
(301) 898-0095



Paul Shipper
(302) 456-1931



TELMARK INC.
1-800-451-3322

Minimum lease: \$5,000



NEED TO CUT THE FEED BILL?

DAIRY BLEND COMPLETE AND CONCENTRATE FEEDS

COMPLETE FEEDS CONCENTRATE FEEDS

#79516
Dairy Blend Flakes
16% All Natural
\$162²³

#51232
32% All Natural
Protein Pellets
\$215²⁴

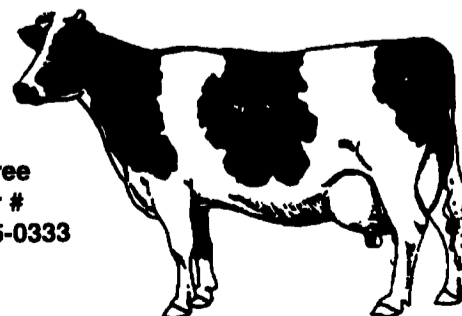
#79518
Dairy Blend Flakes
18% All Natural
\$172²⁴

#51238
38% All Natural
Protein Pellets
\$239²⁷

#79520
Dairy Blend Flakes
20% All Natural
\$182²³

#50734
34% All Natural
Protein Pellets
\$249²¹

Toll Free
Order #
1-800-995-0333



Bulk Feed Available in 1 to 24 Ton Loads

Feed prices for week of April 24 and Subject to Change Weekly with Grain Market
Includes 8 ton volume discount and cash discount of 2 1/2% due 15th following month. Deduct additional \$3.00 per ton if paid in 10 days



pennfield feeds

1-800-732-0467

Quality - Value - Service