

COMPLETE SERVICE



**PUBLIC AUCTION**  
**36 ACRE FARM**

Located Along Rt. 204 Near Kratzerville (Snyder Co.)  
**Sat. May 6, 1995 9:00 A.M.**  
For The Estate Of Roy Benfer

The property affords 30 acres of tillable soil with the balance in woodland. A 2 story, 4 bedroom home, with 1 1/2 bath, large eat-in kitchen, dining room, living room and enclosed porch. The home is nestled off the highway along a private lane. Located on the property is a detached summer kitchen large bank and misc. Other outbuildings.  
**TERMS: 10% Down Balance 45 Days**  
Contact Auctioneers For Showing

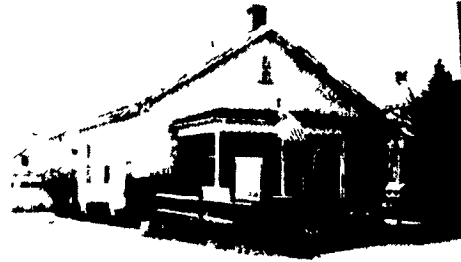
**KENNETH E. HASSINGER**  
RR 02, Box 985  
McClure, PA 17841  
(717) 658-3536  
AU-001532-L



**NEIL A. COURTNEY**  
R.D. #1 Box 239  
Richfield, PA 17086  
(717) 539-8791  
AU-002651-L

**"SHORT NOTICE"**  
**JACKSON TWP. — LEBANON COUNTY**  
**PUBLIC AUCTION**  
**VALUABLE REAL ESTATE**  
1 1/2 Story Dwelling — 38'x42'  
Shop/Garage  
Tools - Equipment - Personal Property  
**THURS., APRIL 27, 1995**  
Auction Time 9 AM  
Real Estate 1 PM

**LOCATION:** 370 Royers Rd., Myerstown, Pa. From Myerstown take Rt. 501 South to Country House Restaurant. Turn left onto Elco Drive. Go to 2nd crossroad left onto Royers Rd. Go approx 1/4 mi. to property on left. Jackson Twp., Leba Co.



Real Estate consists of solid brick 1 1/2 sty. home w/1st floor eat-in kitchen w/knotty pine cabinets, living rm., 2 bedrms., & full bath. 2nd floor unfinished storage area could be future bedrms. Gas forced air heat. On lot well & septic system. Shop/garage is masonry & frame 38'x42' bldg. w/2 overhead doors 1 w/14' door w/auto. opener. 220 Amp elect. & gas 225,000 BTU heat w/system.  
**NOTE:** Inspection by appointment or open house on Sats. April 15 & 22 from 1-4 PM. Mr. Haldeman has been in business for 36 yrs. & has decided to retire. This is an ideal opportunity to purchase a long established welding shop Agri business location.

**Tools**

MILLER 250 DIALARC HF WELDER, AIRCO DIP/STICK 160 MIG WELDER w/ALL ACCESS, 55' Cable & Alum. Migset Gun; Linc Elect SP-100 Mig Arc Welder, Miller Portable Generator/Welder, Hellarc Welding Kit, All Kinds of Welding Rods & Access; Blue Point 8" HD 1 hp Bench Grinder, Heavy Duty 12" Cutoff Saw, 1/4 hp Bench Grinder, B&D 9" HD Portable Grinder, (2) Makita 7" & 5" Portable Grinders, Dewalt 4 1/2" Portable Grinder, Craftsman HD Reciprocating Saw, Craftsman Disc Sander, Snap-on Air Chisel, Sprungler 1 hp Drill Press, Blue Point Full Set Drill Bits, Makita 3/4" Vari Spd Drill, Metabo 1/2" Drill, Skil HD 1/2" Drill, B&D 1/2" Angle Drill, Craftsman Rotary Grinder, Blue Point 3/4" Air Rotary Cutoff Grinder, Snap-on Air Drill, CP Butterfly Impact, CP Air Ratchet, CP 3/4" Air Impact, Snap-on Air 1/2" Impact; Full Set 3/4" Impact Sockets, Snap-on Air Power Scraper, SAE & Metric Impact Sockets, Assortment of Snap-on & Campbell-Hausfield Specialty Air Tools; Dee-Blast Sand Blaster, SNAP-ON ROLLAWAY TOOL CHEST & CABINET, Snap-on HD Batt Charger, Walker & Snap-on Floor Jacks 2-4 Ton, Snap-on Interchangeable Gear Puller, Blue Point Front wheel Drive Tool Kit, Blue Point Tap & Die Set, Snap-on Rethreading Set; Ace Tap & Die Set 1/2"-3/4"; Snap-on Cylinder Leak Detector, 3 HP Heavy Duty V4 2 Stage Air Compressors, 8 Sets Jack Stands, Vanguard Engine Hoist, 10 Ton Porta-Power, 20 Ton Hyd Press w/Jack; Torch Outfit w/Tanks & Cart, NAPA Cooling System Pressure Tester, 5 Hyd Jacks 1 1/2-12 T; Craftsman 1/2" Socket Set; All Kinds of Snap-on & Craftsman Wrench Sets & Misc Hand Tools, Spring Compressors & Specialty Tools; 2 1/4" & 1 1/4" Torque Wrenches, Blue Point Retaining Ring Pliers Set; Snap-on Strud Spring Compressor; Ram Hammer, Pipe Wrenches 18"-36", Assorted HD Steel Clamps; Lots of Parts, Brake Lining & Pads, Automotive & Agri Misc Chilton Manuals as far back as 1935 SCRAP METAL, Log & Towing Chains.  
**PERSONAL PROPERTY** — Microwave Cart, Victrola, Sewing Machine, Desk; Old Chests, Assorted Dishes, Kettles, Glasses, Toys, plus other items.

**NOTE:** If you're in need of good shop tools don't miss this one! Lots of good Snap-on & other tools to be sold to highest bidder! Terms are cash or good PA check. Food stand

**Terms by**  
**Jacob W. &**  
**Alice L. Haldeman**

717-866-2803

Auction conducted by  
Randal Kline, Lloyd Kreider,  
Roy Good, Jr., Auctioneers, AU2116L  
717-445-4309



**PUBLIC AUCTION**  
**B&J BUILDING MATERIALS**  
**SATURDAY, APRIL 22, 1995**  
**9:00 A.M.**

A WIDE VARIETY OF BUILDING MATERIALS  
AT  
TEN PLUS BUILDING PRODUCTS  
KEYSTONE HILL  
717-544-6888 Minersville, PA 17954 717-544-2646

This is a consignment and inventory reduction sale  
New Consignors Please Call Above Numbers and Ask For Bob  
Directions: From Interstate 81: Take Minersville Exit, Travel South on  
Route 901 to 3rd light. Turn right, Signs Posted.  
Auctioneers: Kenneth E. Hassinger AU-001532-L  
Neil A. Courtney AU-002651-L

**KENT FAMILY FARM**  
**COMPLETE FARM DISPERSAL**  
**FRI., APRIL 28 • 10:30 A.M.**  
**HOWARD (STEBEN CO.) NEW YORK**

Sale to be held at the farm on Steuben County Road 27 (Canistota to Howard back Road) about 5 miles south of Southern Tier Expressway Rte. 17 Howard Exit #35; or 4 miles north off County Road 119 River Road between Canistota and Cameron.

Discontinuing farming selling will be:  
125 INTERSTATE TESTED HOLSTEINS

**Several Red and Whites - Some Registered.** 64 milking age females in a stanchion and tie stall barn. Bred for year around freshening. The cattle are in good working condition, have not been pushed for production, no TMR or BST Big rugged cows that will work well anywhere. One big fancy reg. R&W cow sells - an ET from Beachlawn Farm! 9 Bred Heifers Sell, 22 Open Yearlings many breeding size; 12 Short Yearling Heifers; 9 6-mo old Heifers, 8 Started Calves; 6 Started Bulls; 2 Red & White Yearling Bulls. The cattle were A.I. Sired and bred for years until 9/93. Cattle will have blood and T.B. Test, inoculations against shipping fever and pregnancy exams. Catalogues at ringside, truckers available. Cattle sold under tent app 12:45 PM

**MACHINERY-ONE OF THE MOST MODERN AND BEST KEPT LINES EVER OFFERED AT AUCTION IN STEUBEN COUNTY!**

**TRACTORS & COMBINE:** CASE I.H. 5140 tractor, 881 hours, 3 hyd. remotes, 18.4R-38 rubber; FORD 5610 tractor, 1442 hours, 3 hyd. remotes, 15 5-38 rubber; FORD 7710 tractor M.F.W.D., 1263 hours, cab with air and heat, 2 hyd. remotes, 18.4-34 rubber; FORD TW-15 tractor, 1282 hours, 3 hyd. remotes, 18.4R-38 rubber; A.C. 8030 tractor M.F.W.D., 2217 hours, cab with air and heat, 2 hyd. remotes, 20.8R-38 rubber; A.C. GLEANER F-2 "Corn Plus" combine, Deutz diesel power, 13 ft. hume reel grain head, #436 4 row wide corn head;

**PLANTERS-HAY AND FORAGE TOOLS:** CASE-I.H. 5300 grain drill, 18 disks, grass seeder and dry fertilizer boxes; J.D. 7000 4 row wide corn planter with dry fertilizer and insecticide boxes; FORD N.H. 900 CHOPPER tandem axle, metaler II system, 824 2 row adjustable width corn head; 990W wide hay pickup head; THREE (3) FORD N.H. MODEL (2) 816 (1) 716 3 beater forage boxes with roofs on N.H. tandem axle gears with flotation tires; BADGER 3 BEATER forage box with roof on tandem gear with flotation tires; GEHL 1540 blower; N.H. 28 blower; BADGER TA54 blower; Qty. of 9 inch blower pipe; FORD N.H. 570 BALER, with model 72 thrower, hydraulic pickup, hyd. torque, hyd. swing thrower, electric controls, CASE I.H. 3309 DISCBIKE; FORD N.H. MODEL 254 2 umbrella rake/teeder; TWO (2) SHRAUGER 18 ft. metal rack bale wagons, Two (2) bale wagons with wooden kicker racks; PICKUP MOUNT 300 gal. low profile tank 35 ft. boom sprayer; THREE (3) gravity boxes 2-Kery, 1-J&M on running gears; N.I. 3 Pt. 32 Ft. bale or grain transport elevator with electric motor; spreader; ALLIED 6 inch x 40 ft. transport grain auger; SAM MULKEY 32 ft. bale or grain transport elevator with electric motor;

**TILLAGE TOOLS AND GENERAL ITEMS:** FORD 152 "ON THE LAND HITCH FLOW" 5-18 inch spring reset, deep mold board, bottoms, and spring coulters; CASE I.H. 475 hydraulic wing fold 18 ft. transport disk; Landoll "SOIL MASTER" 10 ft transport soil conditioner; I.H. 4500 18 ft. vibrashank with hydraulic fold wings and tine harrow attachment, Kelly 3 pt 4 row tool bar style cultivator with danish style teeth and Cole side dress hoppers, A R P S. model AB 400 3 pt. 8 ft heavy duty multi-position scraper blade; Brillion 10 ft cultipacker, 12 ft. drag; set of manure tines for N.H. skid loader, Two (2) sets of 18 4-38 snap on duals; Two (2) sets of double ring chains, 15.5-38; 18 4-34.

**DAIRY AND LIVESTOCK RELATED:** GEHL 125 MIX-ALL grinder mixer; N.H. 155 manure spreader with Gratz chain and hydraulic end gate; N.I. 3816 "SOLIDS II PLUS" tandem axle semi solids spreader; 30 place feeder wagon; WINPOWER 45/25 p.t.o. alternator on cart; Twelve (12) round poly dome calf hutches; Two (2) U-trough feeders; three (3) Meyer mineral feeders; Two (2) treated lumber feed boxes; Liquid protein or molasses feeder; calf feeder with hay track; Agway breeding wheel; Ritchie (new) low profile waterer; Electric gandy applicator; 42 inch alley fan; BADGER bedding chopper with electric motor and 100 ft cord; HANSEN 20 bu and Two (2) Hansen 14 bu. poly feed carts, SIX (6) UNIVERSAL portable pipeline milkers units each with the "ATO" automatic takeoffs, 3 yrs. old;

**PRODUCE:** High Moisture corn-haylage-corn silage and sorghum all in Harvester units, Qty. oats in bin some with barley mixed; Qty. of square bales hay and straw; A close estimate of quantities will be available at sale time.

Come Again, mark April 28 on your calendar now and plan to be here! Tent Lunch Comfort Facility on Premises.

**FARM AVAILABLE:** Sale or Rent/Lease with option 500 total acres 300-350 tillable, barns, and shop, road frontage on 2 roads!

**TERMS:** CASH or honorable check day of auction. Acceptable I.D. Required. Nothing to be removed until settled for.

**FOR INFORMATION** on This Auction Contact Paul Kent, Kent Family Farm Owners at 607-698-2174 evenings 7:30-9:30 P.M.

Auction Conducted By  
James P. Furrung  
**FURRUNG AUCTIONEERS, INC.**  
Wayland, New York  
716-728-2520

"Professional Auction Company Since 1948"  
Licensed - USDA Bonded-Insured-Reputable"

**Public Auction Register**

Closing Date Monday 5:00 P.M.  
of each week's publication

**PUBLIC AUCTION**  
**LARGE VOLUME OF ANTIQUES**  
**AND COLLECTIBLES**  
**MONDAY, MAY 1, 1995**  
**2:00 P.M.**

**Murry Auction Emporium, 23 N. Water Street,  
Lititz, PA. 1/2 block off Rt. 772 - To rear of  
Sturgis Pretzel Bakery.**

**FURNITURE:** 75 to 100 pcs. (TO BE SOLD AT 6:30 P.M.); Sets of oak chairs, 3 dry sinks, school desk, spinning wheel, stepback dutch decorated cupboard, child's dropleaf table, heavy oak bedroom suite w/claw feet & roll top bed, early Victorian side lock high case, walnut Victorian table, Renaissance Victorian one drawer table, jelly cupboard, sponge red decorated blanket chest, Hepplewhite low case of drawers, early green bench, oak stands, one drawer stand, mahogany table, child's Morris chair, nice oak washstand, clawfoot stand, clawfoot oak library table, lattice plant stand, dropleaf table, Windsor rocker, inlaid clock, country washstand, oak secretary desk, oak parlor stand, rough washstand, double tier stand, medicine cabinet, buggy seat, tred. sewing mac., gate leg table, pine corner cupboard, Grandfather clock, water bury hanging clock, Rishall record player, oak Hoosier cabinet, dough tray, tiger maple ladies desk, jewelers workbench, cupboard top & more not listed.

**LIGHTING:** RR lanterns (one for in car), leaded fruit dome, hand held and stationary oil lamps, metal & glass hanging lamps, piano lamp, figural floor lamp.

**PAINTING & PAPER:** Civil War tin types, oil on board Hazel Doner, cx8 Frances Brundage Children print, 1773 Donegal Deed Jacob Schneiner to Jacob Ohleweiler, signed by Wm. Henry Lancaster gunsmith, N. Currier Virginia, 1807 Birth Cert. Tucks and other postcards, (some local), George Washington picture, blank birth cert., 1864 RR bonds, 6 prints of old Philadelphia 1799-1800, Life magazines 1939-1952.

**CHINA:** Messen chaise w/lady, Staffordshire figurine, very fine selection of bisque figurines, Satsuma urn & vases, German china, Adams rose china, Roseville, nice lot of Lenox, Adams creamer, Linoges plate, Gaudy Ironstone plates, Majolica butter patts & Etruscan plates, Chelsee plates, Metlach 16" stein, Royal Doulton Balloon seller, Wash bowl & pitcher.

**POTTERY & PRIMITIVES:** Wooden fork, slipware plate, yolk, sleighbells, maritime wheel, scales, baskets, butter churn, cutting board, wood carvings, star butter print, Cowden crock, blue dec. crock, brown crocks, wooden bowl, cast iron door stops, large rail plane, sponge bowls, basket makers plane, mini wooden plane & others. Early dec. Tole Coffee pot, Lucky Strike tin, Early redware crock, small irons, locks, bank, Agate goose neck coffee pot, Wattware pitcher, 3 nice barn weather vanes, sponge ware plates, clock cookie jar, turkhead mold & others.

**RADIO - MUSIC:** Emud radio, record albums, Franklin mint records.

**MISC:** Mah. Jong set, French etching, wooden inlaid boxes, sterling silver items, 1878 Bayonette.

**MILK BOTTLES:** Rocky Springs, Moore, Ideal, Cream Top & others.

**ADVERTISING:** Klein box, Bachman box, Rohrer's yard stick, Watt & Shand tineup, openers-wacker & Demuth, Lard tins, Lancaster fair ruby glass.

**BOTTLES:** Groves back bar, Chas Grove Pinch, Empire, Lititz Springs & others.

**SHOT GLASSES:** Hortings safe, Rohrer's A., Rohrer's, Reigarts, Lititz Springs, 4 different Chas. Groves, Wayne Hollinger, Cain Sign Co.

**GLASSWARE:** Blue stretch, spanish lace cranberry items, Cranberry pickle, Cosmos lamp base, milk glass min. lamp base, black glass bowl, Ruby top glass, Roman Rosette lemonade mug, Diamond pt. band celery, Sheraton band creamer, Sandwich 3 heart plate, Vera frosted berry bowls, cut log glassware, Amazon celery, other Amazon, Cranberry vase, 13 pcs. marigold carnival, cranberry rose bowl, 2 panel blue celery, cranberry hobnail rose bowl, 2 pane blue veg. bowl, frosted blue tobacco jar w/boar lift, satin pear vase, art glass pitcher cut glassware, depression glass, Shirley Temple pitcher, barber bottles, white carnival cups, blue carnival glass, green carnival pitcher, Fostoria ware.

**SPECIAL MENTION:** FRANKLIN MINT GUNS - Replicas of Custers 36 cal., Bat Masterson's 45, Wyatt Earp 44, 1950 Road Master bike.

**TOYS:** Jerry Mahoney dummy, Celluloid, carved wooden people, wind up Santa, Celluloid Santa, wooden farm machinery, stuffed monkey, toy tool sets, erector sets, wooden doll house, Christmas houses.

**SEWING ITEMS, QUILTS & FABRICS:** Singer sewing machine (mini portable) sampler, folk art pincushions, 2 nice old quilts, quilted, hot pad, hooked rug, coverlett, wedding ring quilt, morning star quilt, other linens.

**E.M. Murry Associates**  
LICENSE NO. 649-L 23 N. Water St.  
(717) 626-8175 or (717) 626-2636 Lititz, Pennsylvania 17543  
FAX (717) 627-6757 APPRAISERS and ADVISORS

**SAT. MAY 27 -8:30AM** Real estate, antiques, HH goods, tools, collectibles, fine china & glassware. 41 Glendale Dr., Lanc., Pa East Lampeter Twp. For Clarence & Irene Nolt. Miller & Siegrist aucts.

**SAT. MAY 27 - 9AM** Real estate, 2 1/2 story 5 bdrm house, 3 car garage, 1.7 acre tract, personal property, antiques, Farmall Super C tractor & 1982 Chev Malibu. 657 Fivepointville Rd., Denver, from Ephrata Rt. 272 N. to rt. 897, turn right onto Rt 897 S. to Fivepointville, turn right onto Fivepointville Rd. go approx. 1 mi. to property on left. Henry N & Lizzie Redcay. Kline, Kreider & Good, aucts.

**MON. MAY 29 - 9AM** (Memorial Day) Large gathering of antiques & collectibles to include Stone-ware, graniteware, glass, tea pot collection and so much more. Near Mifflinburg just off Rt 104, Harry & Beaty Miller, Hassinger/ Courtney, aucts.

**MON. MAY 27 - 12Noon** Valuable Snyder Co Real Estate RD #1 Middleburg, Pa From Harrisburg take Rts 11 & 15 N., past Liverpool, take Rt 104 N approx 10 miles to Middleburg, take Rt 522 S., proceed approx. 4 miles to Royers Bridge, turn right onto Royers' Bridge Rd. to Chestnut Hill Rd Wagner's Auction Service.

**MON. MAY 29 - 8:30AM** Hit & Miss engine, sawmill, generator plants, old car parts, vehicles, antiques. Off Interstate 83 at PA & MD line go W. on Froeland Road, keep going straight, follow auction signs, approx. 4 miles to auction on right. Clarence Lintz. Rentzel's Auction Service.

**JUNE**

**THURS. JUNE 1 - 7PM** Real Estate. Located at 602 Harts Rd, Oxford, Little Britain Township, Lancaster County, PA. From Rte. 1 bypass Take Rt. 472 South or From Quarryville Take Rte. 472 South to Spruce Grove Rd., Go West to Ashville Rd., Turn Left to Harts Rd., Turn Right to Property on Right. Watch for Signs. Auction Conducted for Richard L. & Christine M. Weaver. Barr Davis Auctioneers.

**FRI. JUNE 2 - 9AM** Real estate, household goods, antiques Located at 310 New Street, Lanc. City, Pa By Luther Maderia Robert E & Jeffrey R. Martin. aucts.

**SAT. JUNE 3 - In the village of Spring Grove, 1 mile E of Terre Hill.** Real estate, antiques and household goods. Edith Bowman, owner. Nevin Martin & Sons, aucts.

**SAT. JUNE 3 - Mel's Stables.** at 834 Wallace Rd., New Holland, Pa. From Rt. 23 in New Holland, go S. on Brimmer Ave., go 2 miles S. on New Holland Rd. to Hill Rd. Turn left on Hill Rd. Proceed 1.2 miles to sale on left. From Rt. 340 E. of Intercourse take New Holland Rd. 2.5 miles to Hill Rd., right on Hill Rd. to sale on left. Mel Hoover, owner.

**SAT. JUNE 3 - 9AM** Farmette, antiques, car, personal property. Located at 2267 Valley View Rd., Narvon, Pa. From Rt. 23 in Churchtown, take N. Churchtown Rd. 2/10 mile to Y and bear right on Hammetown Rd., go 8/10 mile and turn right on Valley View Rd. Travel 4/10 mile & turn left on a private drive & follow to sale. By Caroline E. Styer. Leary, aucts.

**SAT. JUNE 3 - 9AM** Real estate, contractor tools, farm equip, beef herd. At 171 W. Airport Road, Manheim Twp, Lititz, Pa. From Lanc. 501 N to W. Airport Rd. turn left, go approx. 1/2 mile to property on left. By Jon W. Robbins. Wolgemuth Auction Service.