

Estimated Daily Livestock Slaughter

Under Federal Inspection

April 19, 1995

	CATTLE	CALVES	HOGS	SHEEP
WEDNESDAY (EST)	126,000	6,000	358,000	17,000
WEEK AGO (EST)	127,000	6,000	356,000	19,000
YEAR AGO (EST)	124,000	4,000	352,000	20,000
WEEK TO DATE (EST)	374,000	16,000	915,000	49,000
SAME PD LT WK (EST)	363,000	17,000	997,000	56,000
SAME PD LT YR (ACT)	369,000	13,000	992,000	57,000

PREVIOUS DAY ESTIMATED TUES. STEER AND HEIFER 101,000, COW AND BULL 27,000.

***REVISION HOG SLAUGHTER FOR TUES....353,000.

Dewart Livestock Auction
DEWART, PA
April 17, 1995

CATTLE 91... PDA . STEERS: few Choice 1160/1285 lbs. 64.75-66.75, one Select 58.50. COWS: Breaking Utility and Commercial 41.75-45.75, Cutter and Boning Utility 41.50-43.75, Canner and Low Cutter 37.25-41.00. Shells down to 28.50. BULLS: few Yield Grade No. 1 1375/1420 lbs. 45.75-47.50. FEEDER CATTLE: HEIFERS: Medium Frame No. 1 335/485 lbs. 50.50-61.00; BULLS: few Medium Frame No. 1 345/525 lbs. 57.00-60.00. CALVES 148...VEALERS: few Utility 50/85 lbs. 35.00-75.00. FARM CALVES: No. 1 Holstein bulls 85/125 lbs. 95.00-130.00, No. 2 75/120 lbs. 60.00-90.00; No. 1 Holstein heifers 75/130 lbs. 165.00-215.00, few No. 2 75/130 lbs. 110.00-147.50. Few beef cross bulls and heifers 65/110 lbs. 105.00-155.00. HOGS 40...BARROWS AND GILTS: few lots US 1-3 230/260 lbs. 32.60-32.75. SOWS: US 1-3 460/550 lbs. 25.25-28.25. BOARS: 19.00-24.50. FEEDER PIGS 15...Lot US 1-3 30 lbs. 29.00. --- per head. SHEEP 2...SLAUGHTER SHEEP: couple 45.00. GOATS 0...NO MARKET TEST!

New Wilmington Livestock Auction
NEW WILMINGTON, PA
April 17, 1995

CATTLE 155... PDA . Compared to last Monday's sale...cows 1.25 higher. COWS: Breaking Utility and Commercial 40.00-44.00, Cutter and Boning Utility 35.00-40.00, few 47.75, few Canner and Low Cutter 32.00-37.75. Shells down to 25.00. BULLS: few Yield Grade No. 1 1325/1850 lbs. 47.75-49.50, few No. 2 1250/1475 lbs. 44.00-47.25. FEEDER CATTLE: STEERS: few Medium Frame No. 1 475/625 lbs. 56.00-67.00, few Large Frame No. 2 850/1015 lbs. 46.00-53.50; HEIFERS: few Medium Frame No. 1 225/425 lbs. 63.00-87.50; BULLS: few Medium Frame No. 1 400/550 lbs. 54.00-61.00, few Large Frame No. 2 600/1025 lbs. 42.25-48.00. CALVES 136...VEALERS: Standard and Good 80/100 lbs. 60.00-71.00, Utility 50/75 lbs. 32.50-52.50. FARM CALVES: No. 1 Holstein bulls 95/130 lbs. 105.00-125.00, No. 2 80/115 lbs. 80.00-104.00, few 72.50; few No. 1 Holstein heifers 90/105 lbs. 195.00-204.00, No. 2 75/110 lbs. 125.00-167.00. Few beef cross bulls and heifers 90/125 lbs. 80.00-102.50. HOGS 287...Barrows and gilts 1.00 to 1.50 lower. BARROWS AND GILTS: US 1-2 220/260 lbs. 34.25-36.25, US 1-3 215/270 lbs. 33.00-34.10, US 2-3 220/250 lbs. 28.00-32.00, US 1-3 185/210 lbs. 27.25-32.50. SOWS: US 1-3 375/425 lbs. 25.00-29.25, 425/625 lbs. 30.00-34.00, few Medium 300/500 lbs. 23.00-25.00. BOARS: 250/650 lbs. 21.25-22.50. FEEDER PIGS 11...NO MARKET TEST! SHEEP 247...SLAUGHTER LAMBS: Choice 30/60 lbs. 115.00-160.00, 60/80 lbs. 120.00-167.50, 80/100 lbs. 105.00-127.00, Good and Choice 30/60 lbs. 90.00-115.00. SLAUGHTER SHEEP: 17.00-34.00 mostly 22.00-27.00. GOATS 23...Few Large 51.00-71.00, few Small 40.00-47.50, few Large Kids 21.00-32.50, Small Kids 10.00-15.00. --- per head.

Aberdeen Sales Company, Inc.
Complete Auction & Appraisal Service
Churchville, Md.

Report Supplied by Auction
Wednesday, April 19, 1995

SLAUGHTER STEERS: MARKET 1.00 LOWER. CHOICE 2-4 1100-1400 LBS. 64.00-66.75; SELECT & LOW CHOICE 1000-1500 LBS. 60.00-65.00; HOL. STEERS HI CHOICE & PRIME 1250-1400 LBS. 57.00-61.00; CHOICE 1200-1500 LBS. 55.00-58.00; SELECT, ALL WEIGHTS 47.00-53.00. SLAUGHTER HEIFERS: MARKET 1.00 LOWER. CHOICE & PRIME 950-1300 LBS. 62.00-65.00; SELECT ALL WEIGHTS 900-1400 LBS. 53.00-59.00.

COWS: MARKET STEADY. BRK. UT. & COMM. 2-4 BULK 41.00-43.50; HI DRESSING 44.00-48.00; CUTTER & BON. UT. 39.00-42.00; HI DRESSING 42.00-45.00; CANNER & CUTTERS 37.00-39.50; LOW DRESSING 33.00 & DOWN.

BULLS: MARKET STEADY. ALL WEIGHTS 1100-1900 LBS. 44.00-57.00. VEAL CALVES: MARKET 3.00 LOWER. CHOICE AND PRIME 200-400 LBS. 74.00-89.00; HI GOOD AND LOW CHOICE ALL WEIGHTS 60.00-68.00. FARM CALVES: MARKET 6.00 LOWER. HOL. BULLS 100-125 LBS. 102.00-121.00; HOL. BULLS 85-95 LBS. 85.00-114.00; HOL. HEIFER CALVES 100-120 LBS. 165.00-214.00; SMALL FRAME 70-105 LBS. 123.00-165.00; SLAUGHTER CALVES ALL WEIGHTS 40.00-60.00.

FEEDER CATTLE: MARKET 3.00 LOWER. BULLS & STEERS 400-900 LBS. 49.00-74.00; HEIFERS 300-700 LBS. 45.00-67.00.

LAMBS: MARKET 6.00 LOWER. CHOICE & PRIME 90-110 LBS. 78.00-90.00; LIGHTER LAMBS 73.00-114.00; EWES - HEAVY 22.00-30.00, LIGHT 34.00-46.00.

GOATS: MARKET STEADY. SMALL 35.00-50.00; MEDIUM 45.00-80.50; LARGE 85.00-120.00.

HOGS: MARKET 2.50 LOWER. 210-250 LBS. 31.00-34.00; 255-300 LBS. 28.00-33.00; SOWS - HEAVY 24.00-28.00; SOWS - LIGHT 18.00-22.00; BOARS ALL WEIGHTS 19.00-22.00.

Grantville Livestock

Grantville, Maryland
Report Supplied by Auction
Sat., April 15, 1995

STOCK BULLS AND STEERS 200-500 LBS. 55.00-75.00. STOCK HEIFERS: 55.00-73.50. SLAUGHTER STEERS GOOD TO CHOICE, NONE AVAILABLE; MEDIUM TO GOOD 50.00-62.00. HOLSTEIN STEERS GOOD 50.00-56.00; LIGHT 44.50-51.00. SLAUGHTER HEIFERS GOOD TO CHOICE 58.00-60.00; MEDIUM TO GOOD 48.00-59.00. BULLS HEAVY 40.00-52.50, LIGHT 40.00-50.00. COWS FEW HIGH DRESSING UP TO

43.50, UTILITY HOLSTEIN 35.00-38.00, CANNERS 30.00-34.00, CULLS 30.00 AND DOWN. VEALS GOOD TO CHOICE 70.00-115.00, MEDIUM TO GOOD 55.00-68.00. BOB CALVES: 45.00 AND DOWN. HOLSTEIN BULL CALVES RETURN TO FARM 90-120 LBS. 90.00-118.00. HOLSTEIN HEIFER CALVES RETURN TO FARM 100-120 LBS. UP TO 155.00. BEEF CROSS CALVES RETURN TO FARM UP TO 152.50. HOGS: TOP QUALITY 34.00-37.00; HEAVY 33.00-35.00, LIGHT 25.00-37.00. FEEDER PIGS BY THE HEAD 15.00-40.00. SOWS: UP TO 30.00. MALE HOGS: 18.00-20.00. LAMBS: 70.00-95.00; EASTER LAMBS 80.00-150.00; CULLS 65.00 AND DOWN. SHEEP: 22.00-40.00.

Central U.S. Carlot

Beef Report
April 19, 1995

Report supplied by USDA
USDA NATIONAL CARLOT BEEF REPORT (INCLUDES MAJOR PRODUCTION AREAS IN THE MIDWEST AND TEXAS) AS OF 3 P.M.

COW AND BULL CARCASS FOB OMAHA
19.0 LOADS REPORTED COMPARED TO TUESDAY'S 3 P.M. REPORT: UTILITY CARCASSES 1.00-2.00 LOWER; CUTTER STEADY TO 1.00 HIGHER; BULLS STEADY. DEMAND AND OFFERINGS MOSTLY MODERATE.

UT, BRK 2-4 450 LBS. AND UP, 4.0 LOADS, RANGE 64.00-65.00, LATEST ESTBL. MKT. 64.00-65.00.

UT, BNG 1-3 400 LBS. AND UP, 6.0 LOADS, RANGE 68.00-69.00, LATEST ESTBL. MKT. 68.00-69.00.

CUTTER 1-2 350 LBS. AND UP, 7.0 LOADS, RANGE 74.00-75.00, LATEST ESTB. MKT. 74.00-75.00.

BULLS YG 1 500 LBS. AND UP, 2.0 LOADS, RANGE 84.00, LATEST ESTB. MKT. 84.00.

COW AND BULL CARCASSES CAF WEST COAST COMPARED TO LAST WEEK: MARKET FOR WEEK ENDED APRIL 14, 1995:

UT, BNG 1-3 400 LBS. AND UP, RANGE 70.00.

CUTTER 1-2 350 LBS. AND UP 71.00.

BONELESS PROCESSING BEEF/ BEEF TRIMMINGS

100.0 LOADS REPORTED FRESH 90% BONELESS BEEF 3.50-4.00 LOWER IN THE MIDWEST, AND IN TEXAS, 5.00-6.00 LOWER IN A LIGHT TEST; 7% WEAK TO 1.00 LOWER; 65% STEADY TO 3.00 LOWER. DEMAND LIGHT FOR LIGHT TO MODERATE OFFERINGS. BEEF TRIMMINGS LOWER ON LIGHT DEMAND AND MODERATE OFFERINGS.

FOB OMAHA BASIS
90% FR, 14 LOADS, RANGE

95.0-96.0, WT. AVG. 95.32. 90% FZ, 7 LOADS, RANGE 96.0-98.0, WT. AVG. 97.14. 85% FR, UNQUOTED. 85% FZ, UNQUOTED. 75% FR, 5 LOADS, RANGE 72.0-72.50, WT. AVG. 72.30. 75% FZ, UNQUOTED. 65% FR, 7 LOADS, RANGE 56.0-60.0, WT. AVG. 57.57. 65% FZ, UNQUOTED. 50% FR, 44 LOADS, RANGE 33.00-35.00, WT. AVG. 33.94. 50% FZ, UNQUOTED. 50% BX, UNQUOTED. BULL 92-94, 2 LOADS, RANGE 106.0-108.0, WT. AVG. 107.00. FOB EAST TX & OK

90% FR, 6 LOADS, RANGE 94.0-95.0, WT. AVG. 94.33. 85% FR, UNQUOTED. 85% FZ, UNQUOTED. 75% FR, UNQUOTED. 75% FZ, UNQUOTED. 65% FR, UNQUOTED. 65% FZ, UNQUOTED.

CAF NORTHEAST AREAS
90% FR, 15 LOADS, RANGE 98.0-99.0, AVG. 98.90. 90% FZ, UNQUOTED. 85% FR, UNQUOTED. 75% FR, UNQUOTED. 65% FR, UNQUOTED. 50% FR, UNQUOTED.

CAF WEST COAST BASIS
MARKET FOR WEEK ENDED APRIL 14, 1995. 90% FR, UNQUOTED. 85% FR, UNQUOTED. 75% FR, UNQUOTED. 65% FR RANGE 58.0-61.5, WT. AVG. 59.63. 50% FR, RANGE 38.5-41.0, WT. AVG. 39.38.

ABCDE AFTER QUOTES REPRESENTS DAYS SINCE LAST ACUTAL MARKET TEST. QUOTES ARE DROPPED AFTER 5 DAYS OF NO TEST OR BEFORE IF THEY NO LONGER REFLECT CURRENT MARKET CONDITIONS.

Lancaster Feeder Sale

Lancaster, Pa
Wednesday, April 19, 1995
Report Supplied By Auction

Feeder Cattle Today 483
Trend not comparable, because small supply in recent weeks. Supply included around 325 head sold in lots of four or more. demand no more than fair to a good attendance.

Steers: Medium & Large #1 24 head 533-556 lbs. 76.50-78.25, weighted avg. 550, weighted price 77.83 thin; 23 head 506-516 range 67.50-70.00, weighted avg. 512 lbs. weighted price 68.47; 12 head range 656, 76.25; weighted avg. 656 lbs. 76.25 thin; 63 head range 626-697 lbs. 64.75-70.75, weighted avg. 663 lbs. 67.49; 58 head range 704-798 lbs 60.00-64.50, weighted avg. 769 lbs., 61.78; 8 head range 820 lbs. 62.25, weighted avg. 820 lbs. 62.25.

HEIFERS: Medium & Large #1 20 head range 461-485 lbs. 64.50-67.50, weighted avg. 473 lbs. 65.96 thin; 32 head range

421-456 lbs. 55.50-60.50, weighted avg. 439 lbs. 58.36; 25 head range 545-579 lbs. 60.50-64.50, weighted avg. 553 lbs. 61.70; 9 head range 721 lbs. 55.75, weighted avg. 721 lbs. 55.75. HOLSTEINS: Large #2 8 head range 648 lbs. 51.50, weighted avg. 648 lbs. 51.50; 9 head range 881-888 lbs. 48.00-54.00, weighted avg. 884 lbs. 51.32; 11 head range 1049 lbs. 52.75, weighted avg. 1049 lbs. 52.75.

New Holland Dairy

New Holland Sales Stables
Wednesday, April 19, 1995
Report supplied by auction

DAIRY COWS 77; HEIFERS 72; BULLS 4. MARKET STEADY. LOCAL FRESH COWS 750.00-1125.00.

LOCAL SPRINGERS 610.00-1285.00. FRESH HEIFERS 785.00-1175.00. UPSTATE LOADS FRESH 850.00-1425.00, SPRINGERS 905.00-1125.00.

LOAD OF CANADIAN FRESH COWS 620.00-1200.00, SPRINGERS 800.00-1150.00.

LARGE SPRINGING HEIFERS 1060.00-1285.00, SMALL SPRINGING HEIFERS 635.00-950.00.

SHORT BRED HEIFERS 420.00-960.00. REGISTERED HEIFERS 985.00-1235.00.

OPEN BREEDING AGE HEIFERS 660.00-700.00. SMALL OPEN HEIFERS 470.00-560.00.

BULLS 230.00-600.00, PUREBREDS 460.00-900.00.

Jersey Shore Livestock Market, Inc.

Auction every Thursday
at 4:00 p.m.
Jersey Shore, Pa.

Report supplied by Auction
Thursday, April 20, 1995

RETURN TO FARM CALF 70.00-140.00.

GOOD VEAL: 70.00-120.00. COMMON VEAL: 30.00-70.00. CHOICE STEERS: 60.00-65.00. SELECT STEERS: 50.00-62.00.

COMMON STEERS: 35.00-60.00. COMMERCIAL COWS: 38.00-43.25. CANNERS-CUTTERS: 34.00-41.00. SHELLS: 30.00-33.00.

CHOICE HEIFERS: 61.00-65.00. SELECT HEIFERS: 80.00-62.00. COMMON HEIFERS: 44.00-57.00. GOOD FEEDERS: 60.00-78.00. COMMON FEEDERS: 40.00-59.00. BULLS: 42.00-50.00. HOGS: 33.00.

Haylage Season Means Bunker Season Is Here!!!

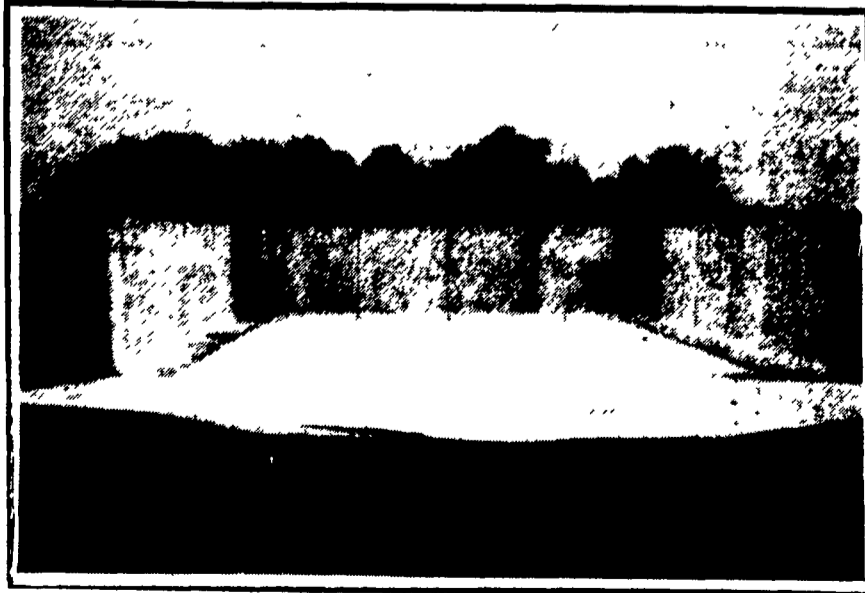
Think Pre Cast!

Get The Advantages!

Moveable
RESALE VALUE

8'6" Height

Tongue & Grooved Joints Bolt Together



Think Quality

Think Sollenberger Silo

#1 in precast concrete!

Ask about Bunker Add. Discount!



Sollenberger Silos Corp.

A Nittorhouse Company
Box N Chambersburg, PA 17201

(717) 261-9586

Poured Concrete Silos Since 1908

For Precast Bunk Silos & Manure Systems

Ask For TABB JUSTUS
Evenings 717-762-8663