

# Larry L. Adair

55 Gal. Drum  
Delivered Free  
50 MI. Radius  
From York, PA



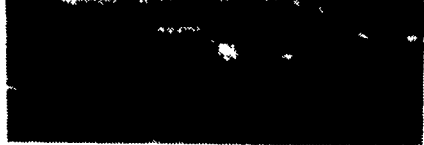
15W40 \$194.50  
SAE 30 \$192.00  
Tractor Hydraulic \$199.50  
Hydraulic Oil \$157.10

(717) 246-9741

800-755-OILS (6457)

Call Early Morning Or Late Evenings

Take Exit 20B  
Off Of 83, 5 1/2 MI. West  
To Belmont Farm.



## Farmall 560 Gas

FH, Nfe, TA, w/ IH 2000 Fully Hyd. Ldr.

\$3,500

410-833-9091

## ENGINE OVERHAUL KITS

**Clevite**

PERFECT CIRCLE HEAVY DUTY ENGINE PARTS



Example:

Allis Chalmers	670T Engine	\$1,893
Case	G188D Engine	\$560
Ford	120 Gas	\$225
IFC	D282	\$726
Deere	6404	\$1,073

These kits feature premium performance AE Clevite or Perfect Circle Engine Components. Includes: Pistons, Piston Pins, Rings, Sleeves, Rod & Main Bearings and overhaul gasket set.  
-Call with your application today  
-Limited Lifetime Warranty!  
Free bearing installing kit with each overhaul kit. • Call for details

## Penn Diesel Service Co.

Interstate 81, Exit 27  
Harrisburg, PA 17112

(717) 545-4207 (800) 535-2913

## TRACTORS

- MF 1020, 21 hp, diesel tractor w/warranty & new loader
- MF 265, diesel, 8 spd, 28" rubber cab, H/A
- MF 245 overhauled, new paint & rubber, sharp
- MF 180 diesel, wide front
- MF 165 gas w/loader
- MF 165 38" rubber, good running tractor
- MF 135 gas, power steering, w/loader
- MF 135 gas, good running
- MF 35 good running tractor
- Ferguson 20 w/engine overhaul
- MF 846 loader, quick-tach

## EQUIPMENT

- NH 275 w/thrower
- NH 273 baler w/thrower
- NH 489 haybine
- NH 477 haybine
- 95 Gehl Grinder Mixer, like new
- JD 1240 4R corn planter
- IH 5100 7x16 drill w/press wheels
- IH 510 7x18 drill w/grass seed box
- MF 880 spring reset plow: 4x16
- Taylorway 7 tooth soil saver
- Cultipackers: 12', 14', 16' and different sizes
- JD cultipacker 14' w/transport
- 10 tooth Athens trail type chisel plow
- IH 3 pth 9' field cultivator
- JM gravity box and gear
- Rotary mower
- Used Brillion cultipacker and cultimulcher parts
- Packer pups
- New farm and corral gates, also hay feeders

MF Tractor parts Dismantling 20, 30, 35, 40, 50, 65, 85, 90, 135, 150, 165, 175, 178, 180, 283, 285, 399 4WD, 1080, 1085, 1100, 1130, 1105, 1135 1150 w/cab, 1155, 2805, 3680, MH 22, 44

## NOLT'S EQUIPMENT

403 Centerville Rd., Newville, PA 17241  
off 81 exit 11, 2 miles N on 233

(717) 776-6242 No Sunday Calls

No Out-Of-State Personal Checks We Ship UPS



HARVEST  
TEC

HUDSON, WI 54016 • 715-386-9100

## Heidel Hollow Farm

P.O. Box 87 (7419) Saegersvikle Rd)  
Germansville, PA 18053

Tel. 610/767-2409 Fax 767-1312

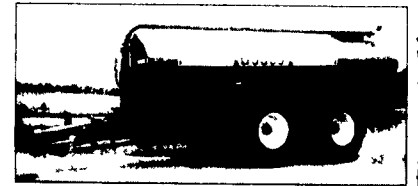
Baler Choice (Hay Preservation)  
Swathers Choice (Drying Agent)

- 20' Aluminum Bi-directional Belt Conveyor
- 22' Flat Chain Conveyor
- MF 750 Combine
- MF 13 ft. Grain Table
- MF 44 Corn Head
- Int 656 Hydro Gas
- Braco 200 bu. Potato Bulk Box on Int 1800 truck, 5 Speed with 4 Speed Transfer
- Steffen Model 950 10 Bales Accumulator
- Haines Bulk Loader 38 ft. Boom
- Haines Pit Unloader
- Advanced 22 ft. Elevator
- Haines Potato Grader
- Hopper Potato Elevator
- JD 347 Baler
- Deutz Fahr 6 Star Hay Tedder
- Harvest Tech Saddle Tank Frame 2-150 gal. Tanks and Pump
- IH 18 ft. Weeder Fast Hitch
- Johnson 10-TC Front End Loader (Garden Tractor)

## Bodco Logi-Tank Liquid Manure Spreaders

3120 to 6120 Gal.

With Optional Trac-O-Matic Steering



Model 3600 Liquid Manure Spreader  
In Stock And Available For Rental

Also:

- Bodco Bedding Choppers
- Bodco Motorized Feed Carts
- Bodco Manure Pumps
- Bodco Barn Cleaners
- Bodco Water Bowls
- Bodco Landscaping Chopper

We are an authorized  
**BODCO DISTRIBUTOR**  
Dealers Welcome

Sales & Service

## ROVENDALE AG & BARN EQUIP.

Watsonstown, PA 17111

717-538-9564 or 717-742-4226



Exit 31, I-80 to I-180 Watsonstown Exit

Hours: Mon-Fri 8 to 5, Sat 8 to 12



# Used Equipment

## USED TRACTORS

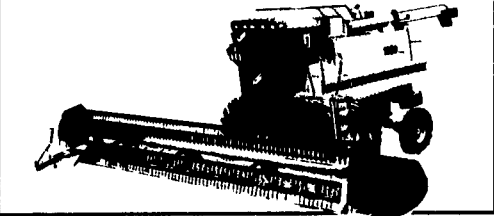
- Case IH 7110 Magnum, 1,496 Hrs., Very Clean
- Ford 8000
- Ford 7000
- MF 165, Diesel
- MF 1155, w/cab
- IH 1466, Fender
- IH 706
- IH 656, gas
- IH 986, cab, nice
- IH 560, Diesel
- Farmall Cub
- Ferguson TO35

- IH 315 Cultimulcher
- Dunham Lehr 10' Cultimulcher
- JD 400 15' rotary hoe
- IH 730 var. width plow, 4 btm.
- IH 475 20' Disc

- Westfield 8x51 PTO Auger
- Triple H 1000 Gallon Sprayer w/60' Vicon Hyd. Boom, Foam Marker, Nice
- Century 300 gallon trailer sprayer
- IH 550 manure spreader

## New Vicon Seeders in Stock

Case IH 1660 combine w/380 hrs.  
w/specialty rotor  
Waiver of Finance Till 10/1/95



## GRAIN HARVESTING

- IH 810 w/15' Head
- IH 1020 w/20' Flex Head
- NI 325 2R Corn Picker

## USED COMBINES

- Case IH 1660 combine w/specialty rotor, 1,670 hrs. w/30.5x32 drive tires
- Case 660 w/2 Heads
- MF 410 w/2 Heads
- IH 93 w/2 Heads
- NI 813 Flex Head
- NI 844 Corn Head



Agco Allis 8610,  
MFD w/Cab,  
Loaded, 95 Hrs.

## USED HAY & FORAGE

- Gehl BU910 Forage Box
- JD 1209 Mower Conditioner
- IH #8 Flail Chopper
- Papec 870 Grinder Mixer
- Pequea 7' PTO Tedder
- NI 406 Hyd. Drive Rake
- Gehl WR310 3 Pt., 8 Whl. Rake
- Deutz Fahr KS150 3Pt. Rake
- Case IH 8360 12' Center Pivot Mower Conditioner, Very Good
- Stohl 410 Tedder Rake
- IH #50 Stalk Shredder
- Woods 121 Rotary Cutter

## USED TILLAGE EQUIPMENT

- Int. 45 Vibra Shank 12.5 Ft.
- Int. 461 4 Row Front Mounted Cultivator
- Kewanee 3 Pt. Field Cultivator, 20'

# Eckroth Bros. Farm Equipment

RD 2 Box 24A, New Ringgold, PA 17960

717-943-2131

7:30-5:30 Mon.-Fri. 7:30-4:00 Sat.



# Best Buys In Used Equipment

## TRACTORS

- Case IH 2140 MFD Vineyard/Orchard Tractor
- Case IH 2130 MFD Vineyard/Orchard Tractor
- Case IH 885 Tractor w/2255 Loader
- Case IH 7120 MFD w/Duals, Clean, Just Traded
- Case IH 2294, MFD, w/Duals
- Case IH 5140, MFD, w/Cab
- Case IH 7120 MFD w/duals, 1992
- Kubota L245 high clearance w/cultivators
- Ford TW25 MFD, w/Cab

## COMBINES & HEADS

- Case IH 863 Cornhead
- IH 820 22 1/2', grain head
- IH 1020 15', grain head
- IH model 963, 6R corn head
- IH 1420 axial flow combine w/13' 820 header
- IH 844 4RW corn head
- IH 1420 axial flow combine, 15' 820 head & 844 4R corn head
- 1994 Case IH 1644 Axial Flow w/17 1/2' 1020 Head, 593 Hours
- 1992 Case IH 1640 Axial Flow w/15' 1020 Head, 700 Hours

## MISCELLANEOUS

- Bauer Rainstar 110-350P
- JD 3 Pt. Hitch Rotary Hoe 20' Wide
- Mechanical 3 Pt. Hitch 3R Transplanter
- (4) IH 295 Planter units, w/extra press wheels
- IH Cyclo planter, 6x30" rows w/fertilizer attachment
- AC no-till 9R-18" planter
- JD 17' manual fold disc harrow
- Case IH 5100 Grain Drill 21x7
- Cub Cadet 1250 w/44" mower deck
- Case IH 165 5b 16" roll over plow
- AC 616 hydro lawn tractor w/44" deck
- Hale 50 FB2, PTO Irrigation Pump With Couplers
- FMC 3 Pt. Hitch Sprayer
- Cub-Cadet 582 Garden Tractor
- White 252 Disc Harrow w/Dual Wheels, 13'10"
- JD 7b On-Land Plow
- Case IH 5717 Chisel Plow, 17'
- White 6b Semi-Mounted Plow
- Unverferth Header Cart
- Brittania Boom Sprayer



## HAY & FORAGE

- NH 782 Forage Harvester
- Pequea 1006 10 ton wagon,
- NH 268 Square Baler

- NH 680 Manure Spreader
- NH 1495 Self-Propelled Haybine

# Farm-Rite inc.

Agricultural Equipment, Supplies & Services

SHILOH, N.J.

1-800-752-6373

