

# Lester Daughter Tops 1995 Pennsylvania Spring Jersey Sale

**CAROLYN N. MOYER**  
Bradford County Correspondent  
LIBERTY (Tioga County) —  
Despite a couple of inches of slushy snow and bone-chilling temperatures, nearly 200 people turned out for the Pennsylvania Spring Jersey Sale and Pot-of-Gold Sale held at Normandell Farms last weekend.

A 2-year-old Highland Duncan Lester daughter consigned by Lester and Ruth Martin of Chambersburg topped the sale. Placing the \$1,500 top bid were Jeff and Michele Reasner of Shippensburg.

The second high seller went to Richard Crawford of Port Royal for \$1,450. The animal, Lawman Kupcake of Darlawn, was consigned by Paul and Rebecca Darling of Nicholson.

Normandell Kingsley Babe, consigned by Normandell Farms, was the third high seller. Bill Spencer of Granville Summit purchased the 4-year-old for \$1,275.

The high calf was purchased by Amy Hixson of Scottsdale. She purchased Stoney Hollow Brook Micky, a September calf con-

signed by Don and Jill Stonerook of Martinsburg, for \$1,000.

In the Pot-of-Gold Sale, Stoney Hollow Charlie Pansy, consigned by Don and Jill Stonerook, took the high position, as the August calf was purchased by Nikki Hart-Losch, of Mifflintown for \$824.

A craft auction was also held with the proceeds to benefit the youth fund. Nearly \$850 was raised through the sale of painted sweatshirts, a small painted lap desk, a cheesebox, ceramic cows, pillows and hats, among other items.

Although the weather forecast was for rain and 50-degree weather, Mother Nature proved that you can never quite predict the future.

"I think the weather affected the sale," said David Norman, secretary of the Pennsylvania Association and co-host of the sale. "I had a lot of potential buyers from Bradford County who didn't come over."

Overall, the cows averaged \$952, calves averaged \$400, and the Pot-of-Gold animals averaged \$554.



Jeff and Michele Reasner of Shippensburg bought the sale-topper at the Pennsylvania Spring Sale and Pot-of-Gold sale. With the Lester daughter are Craig Sprout, at the halter, Michele Reasner, Jeff Reasner, Art Kling, and consignor Lester Martin.

## FARMER BOY AG. INC.

### PRESSURE WASHING & ACCESSORIES

#### AQUA BLAST

#### Pressure Washing Systems

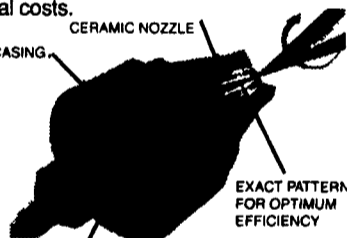
**GAS HOT**  
Model - P4230EH  
Pressure Rating - 2300 PSI  
Pump Type - (D/D - C/P)  
Electrical - 230V, 30 AMP, Single PH  
Fuel Capacity (US Gal. - 5 gallon)  
Discharge Hose - 3/8" x 40'  
Approximate Weight - 430 lbs.  
Flow Output - 4.0 GPM  
Horsepower - 5.0 HP  
Max. Output Temp. - 210°F  
Fuel Type (Burner) - K1, #1, #2  
Dimensions - 38"L, 28"W, 44"H



**ELECTRIC COLD**  
Model - 4230EC  
Pressure Rating - 2300 PSI  
Pump Type - (D/D - C/P)  
Electrical - 230V, 25 AMP, Single PH  
Dimensions - 48" L, 19", 24" H  
Flow Output - 4.0 GPM  
Horsepower - 5.0 HP  
Discharge Hose - 3/8" x 40'  
Approximate Weight - 200 lbs.

#### DIRT KILLER

The world patented Dirt Killer, which features a rotating turbine, delivers the impact of a 0 degree nozzle with a 25 degree fan. This incredible performance will increase your efficiency while cutting your cleaning time in half, saving you money through reduced labor and material costs.



WATER FLOWS THROUGH TURBINE FOR OPTIMUM RPM WITH NO LOSS OF PRESSURE

Dual Wand Assembly With Hose



### FEEDING & ACCESSORIES

#### Piglet Hanger

Save time and money by holding baby pigs safe and secure when they need special attention.

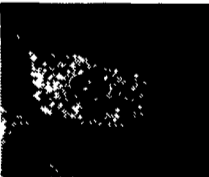
#### Vet Tray

The vet tray comes with sturdy carrying handle, towel rack and plenty of storage trays. Fits the chore cart and farrowing crate. The sturdy plastic material is disease free and easy to clean.



#### Feed Cart

The feed cart has large 6" and 10" wheels with 275 lb. ratings and a rubber tire surface. This cart is capable of 180 degree turns in its own length. The heavy axle and E-coated steel frame will take plenty of punishment and last a long time under normal use.



#### Baby Pig Feeder

1 Gallon capacity  
Convenient wall bracket included  
9"W, 4 1/2"D, 20" H



Baby Pig Hovers  
Single-sided Hover  
11 3/4" x 16 3/4"



#### Chore Cart

- Super smooth & easily cleaned
- Never rusts or corrodes
- Smooth sloping interior prevents feed bridging
- Material won't crack or shatter at corners or bust holes in your doors and walls
- 360° turn radius in confined space
- Heavy steel tube frame for long life
- Full line of accessories available



#### Hand Winches

Posi-Lock Winches for Industrial & Agriculture Uses  
5414 - Capacity: 1200lbs,  
Gear Ratios: 4.1:1 (One way ratchet free spools in "off" position)



#### Worm Gear Winches

5312 - Capacity: 1500 lbs., Gear Ratio 31:1  
5313 - Capacity: 2000 lbs., Gear Ratio 41:1



Full Line of Parts in Stock For Your Poultry and Hog Needs

Hours: Mon thru Fri 7 - 5  
Sat 7:30 - 12 Noon

24 Hour Service

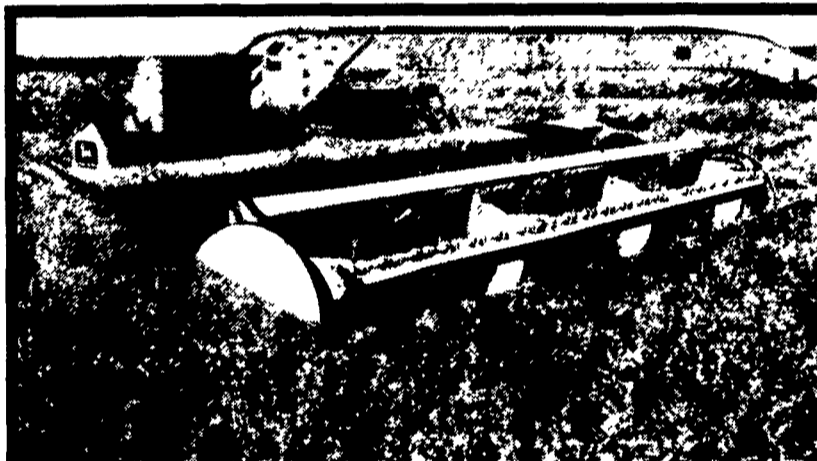
**FARMER BOY AG. INC.**  
410 East Lincoln Avenue, Myerstown, PA 17067  
717-866-7565 • 1-800-845-3374

Check Our Warehouse Prices

Swine & Poultry Systems Specialists



## MILK AMERICA'S HEALTH KICK



## On the Cutting Edge

New NC+ SIERRA™ alfalfa is a Fall Dormancy 3 variety that can add extra yield punch and quality to your forage program.

### SIERRA RANKS FIRST

- ◆ First in relative feed value and milk per acre in tests against top competitors.
- ◆ First among 36 top-yielding Fall Dormancy 3 alfalfas in NC+ yield trials.

SIERRA offers a solid disease and nematode resistance package, plus persistency that can mean four-to-five productive years. Make sure you try some this season. See us soon for details.

**2% CASH DISCOUNT UNTIL MAY 27**



America's down to earth seed company

#### CONTACT YOUR LOCAL DEALER

Aaronsburg, PA.....	Delmer S. Homan.....	814-349-8054
Blairsville, PA.....	Dennis McConnell.....	412-248-9785
Elliptsburg, PA.....	Wayne S. Freeman.....	717-582-2397
Halfax, PA.....	Bechtel Farms.....	717-896-8314
Kempton, PA.....	David G. Rice.....	610-756-6574
Kintnersville, PA.....	Wayne R. Litzberger.....	610-847-5563
Kunkletown, PA.....	Jeffrey L. Borger.....	610-381-3785
Kutztown, PA.....	Leon B. Wesener.....	610-285-6246
Lebanon, PA.....	Clarence B. Mull.....	717-865-2037
Lewisburg, PA.....	Urle C. Yoder.....	717-524-7739
Litzitz, PA.....	Elvin M. Hurah.....	717-733-3538
Manheim, PA.....	Arthur S. Auker.....	717-665-6627
Mifflintown, PA.....	David B. Sauer.....	717-535-5103
Richfield, PA.....	Samuel E. Knouse.....	717-463-2885
Salem, NJ.....	Donald Emel.....	609-769-1577
Thompsontown, PA.....	Roger L. Sauer.....	717-535-5307
Westminster, MD.....	R. Todd Leister.....	410-848-8528