

## Public Auction Register

Closing Date Monday 5:00 P.M.  
of each week's publication

FRI. OCT. 13 - 6 PM Feeder Cattle Sale. New Holland Sales Stables, Inc., 101 W. Fulton St., New Holland, Pa.

WED. OCT. 18 & THURS. OCT. 19 - Large Two Day Sale of Farm Equipment, Etc. Located 6 Miles South Of Chambersburg, Pa. One Mile East of Marion along

Rt. 914, 1/4 East Off Hte. 81, Exit 4. Owners, Jerrold & Gloria Oaks. Marion Auction Service.

FRI. OCT. 20 - State Graded Feeder Sale. Belleville Livestock Market, Inc.

FRI. OCT. 20 - 7PM Horse Sale. New Holland Sales Stables, Inc., 101 W. Fulton St., New Holland, Pa.

SAT. OCT. 21 - 5th Edition - Progress of Pen Col. Millville, Pa. Managed by The Cattle Exchange.

MON. OCT. 23 - Don-Barb Octoberfest, Cazenovia, NY. Managed by The Cattle Exchange.

TUES. OCT. 24 - 8PM

Feeder Cattle Sale. Carlisle Livestock Market, Inc., Exit 12 off I-81 turn South - then left onto Alexander Spring Rd. 249-4511.

WED. OCT. 25 - 11AM Annual Dairy Show & Sale. New Holland Sales Stables, Inc., 101 W. Fulton St., New Holland, Pa.

FRI. OCT. 27 - 1:30PM State Graded Feeder Pig Sale. Carlisle Livestock Market, Inc., Exit 12 off I-81 turn South then left onto Alexander Spring Rd., 249-4511.

### NOVEMBER

WED. NOV. 1 - 6:30PM Winross trucks & toys. A&C

## Dairy and Livestock Sales

Diffenbach Auction, Inc 100 W. Jackson St., New Holland, Pa.

FRI. NOV. 3 - Fall Heifer Sale. Belleville Livestock Market, Inc.

SAT. NOV. 4 - Mel's Stables. at 834 Wallace Rd., New Holland, Pa. From Rt. 23 in New Holland, go S. on Brimmer Ave., go 2 miles S. on New Holland Rd. to Hill Rd. Turn left on Hill Rd. Proceed 1.2 miles to sale on left. From Rt. 340 E. of Intercourse take New Holland Rd. 2.5 miles to Hill Rd., right on Hill Rd. at sale on left. Mel Hoover, owner.

TUES. NOV. 7 - 8PM Feeder Cattle Sale. Carlisle Livestock Market, Inc., Exit 12 off I-81 turn South - then left onto Alexander Spring Rd. 249-4511.

FRI. NOV. 10 - 9AM Farm equip, tractors & farm supplies. A&C Diffenbach Auction, Inc. 100 W. Jackson St., New Holland, Pa.

FRI. NOV. 10 - 1:30 PM State Graded Feeder Pig Sale. Carlisle Livestock Market, Inc., Exit 12 off I-81 turn South then left onto Alexander Spring Rd., 249-4511.

TUES. NOV. 14 - Fed Cattle Sales. Carlisle Livestock Market, Inc. Exit 12 off I-81 turn S. then left onto Alexander Spring Rd. 249-4511.

WED. NOV. 15 & THURS. NOV. 16 - Large Two Day Sale of Farm Equipment, Etc. Located 6 Miles South Of Chambersburg, Pa. One Mile East of Marion along Rt. 914, 1/4 East Off Rte.

81, Exit 4. Owners, Jerrold & Gloria Oaks. Marion Auction Service.

FRI. NOV. 17-7 PM Horse Sale. New Holland Sales Stables, Inc. 101 W. Fulton St., New Holland, Pa.

FRI. NOV. 17 & SAT. NOV. 18 - Martin's Annual Fall Auction of Horse drawn carriages, sleighs and antiques. at Leb. Area Fairgrounds, Leb., Pa. Martin Aucts.

TUES. NOV. 21 - 9AM Quilt, craft & Buggies. A&C Diffenbach Auction, Inc. 100 W. Jackson St., New Holland, Pa.

TUES. NOV. 21 - 8PM Feeder Cattle Sale. Carlisle Livestock Market, Inc., Exit 12 off I-81 turn South - then left onto Alexander Spring Rd. 249-4511.

WED. NOV. 22 - 9AM Quilt & craft. A&C Diffenbach Auction, Inc. 100 W. Jackson St., New Holland, Pa.

FRI. NOV. 24 - 10AM Weekly Thurs Sale, 6 PM Feeder Cattle Sale. New Holland Sales Stables, Inc., 101 W. Fulton St., New Holland, Pa.

FRI. NOV. 24 - 1:30PM State Graded Feeder Pig Sale. Carlisle Livestock Market, Inc., Exit 12 off I-81 turn South then left onto Alexander Spring Rd., 249-4511.

### DECEMBER

SAT. DEC. 2 - Mel's Stables. at 834 Wallace Rd., New Holland, Pa. From Rt. 23 in New Holland, go S. on Brimmer Ave., go 2 miles S. on New Holland Rd. to Hill Rd. Turn left on Hill Rd. Proceed 1.2 miles to sale on left. From Rt. 340 E. of Intercourse take New Holland Rd. 2.5 miles to Hill Rd., right on Hill Rd. at sale on left. Mel Hoover, owner.

left on Hill Rd. Proceed 1.2 miles to sale on left. From Rt. 340 E. of Intercourse take New Holland Rd. 2.5 miles to Hill Rd., right on Hill Rd. at sale on left. Mel Hoover, owner.

TUES. DEC 5 - 8PM Feeder Cattle Sale. Carlisle Livestock Market, Inc., Exit 12 off I-81 turn South - then left onto Alexander Spring Rd. 249-4511.

WED. DEC. 6 - 6:30PM Winross Trucks & Toys. A&C Diffenbach Auction, Inc. 100 W. Jackson St., New Holland, Pa.

FRI. DEC. 8 - 9AM Farm equip, tractors & farm supplies. A&C Diffenbach Auction, Inc. 100 W. Jackson St., New Holland, Pa.

FRI. DEC. 8 - 1:30PM State Graded Feeder Pig Sale. Carlisle Livestock Market, Inc., Exit 12 off I-81 turn South then left onto Alexander Spring Rd., 249-4511.

TUES. DEC. 12 - Fed Cattle Sales. Carlisle Livestock Market, Inc. Exit 12 off I-81 turn S. then left onto Alexander Spring Rd. 249-4511.

TUES. DEC 12 & 19 - Goat & Lamb Sale. Receiving 9AM Christmas Sale. Carlisle Livestock Market, Inc. Exit 12 off I-81 turn S. then left onto Alexander Spring Rd. 249-4511.

SAT. DEC. 16 - Mel's Stables. at 834 Wallace Rd., New Holland, Pa. From Rt. 23 in New Holland, go S. on Brimmer Ave., go 2 miles S. on New Holland Rd. to Hill Rd. Turn left on Hill Rd. Proceed 1.2 miles to sale on left. From Rt. 340 E. of Intercourse take New Holland Rd. 2.5 miles to Hill Rd., right on Hill Rd. at sale on left. Mel Hoover, owner.

WED. DEC. 20 & THURS. DEC. 21 - Large Two Day Sale of Farm Equipment, Etc. Located 6 Miles South Of Chambersburg, Pa. One Mile East of Marion along Rt. 914, 1/4 East Off Rte. 81, Exit 4. Owners, Jerrold & Gloria Oaks. Marion Auction Service.

FRI. DEC 22 - 1:30 PM State Graded Feeder Pig Sale. Carlisle Livestock Market, Inc., Exit 12 off I-81 turn South then left onto Alexander Spring Rd., 249-4511.

## Green Dragon Livestock Sales

Located 1 Mi. N. On North State St., Ephrata

### Sale Every Friday

11:00 A.M. Beef  
7:00 P.M. Small Animal Sale  
200-300 Stocker & Feeders Every Friday.  
Regular Shippers Of Northern Cattle

Walter H. Risser,  
Prop.

Home 717-838-4318  
Office 717-733-2444

## AUCTION

VALUABLE REAL ESTATE - 2 ACRES

5 BDRM, 2 1/2 BATHS, 1 1/2 STORY HOUSE, 3-CAR GARAGE  
W/DECK SMALL BARN & OTHER OUT BUILDINGS

Location: 1140 West Penn Grant Rd., 2 miles W. of 272 (Willow Street) off Rt. 324 Pequea Twp., Lanc. Co

SAT., APRIL 22, 1995 • 10 A.M.  
R.E. 12:00 NOON.

R.E. consists of 1900 sq. ft. living area, full basement family room w/fireplace, lg eat-in kitchen inc dining area, lg living room  
Several Built-ins: (2) Corner Cupboards, Chests of Drawers, Cedar Closet, Air cond., Central Vac., Canning Cellar, Cold Cellar, New H A. Furnace, Mature Shade, 2 Mature English Walnut Trees etc One Owner Home Beaut View.

ALLIS-CHALMERS B Tractor, 10-24 Tires (very good), 7' Side Mid Mower, Starter & Lights, Hydraulic Power Lift, Good David Bradley Garden Tractor & Cult; Potato Plow, Walk Plow, Shovel Plow, Sturdy Trailer, Old Bag Wagon; Buck Saw; Wheel Barrow.

ANTIQUES & FURNISHINGS: 22 cu Whirlpool chest freezer, Maple 4 pc. B R suit, Birds Eye Maple Dresser, Wash Stand, Old Oak Spindle Back Chairs.

5 HP Wisconsin Engine w/Hand Clutch; Old Mustang Lawn Tractor; numerous items.

No Out-Of-State Checks  
Any Announcements Sale Day Take Precedence Over Advertising.

Walter & Dorothy K. Hess

Auctioneers:  
Carl Diller & Gary Shirk  
A.L. 0226  
Phone: 464-2233

Lunch Byerland Church

## NOTICE Special Consignments

April 19, 1995 Sale Time 12 00 Noon

Load of cattle out of New York State

April 26, 1995 Sale Time 12 00 Noon

For more information call

Walter M. Dunlap & Sons, Inc.

Tel. 717-397-5136

Fax 717-397-6109

## Canadian Holsteins

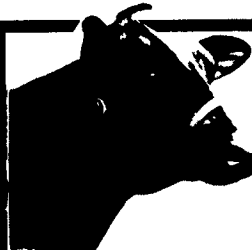
We sell complete herds (Reg. or Grade) privately or by auction. Check with us as to what we have available and for sale dates at our arena.  
(5) 40-50 Reg. & Grade Herds For Sale

Brubacher Sales Ltd.

R.R. #7, Guelph, Ontario, N1H 6J4

(519) 822-3147

(519) 824-0796 or (519) 654-7833



## ADVANCE NOTICE

Complete Milking Herd Dispersal

at

SMOKETOWN QUALITY DAIRY SALES

SMOKETOWN, PA

More Details Next Week's Issue

## The Maryland Polled Hereford Association

# CELEBRATE MARYLAND SALE

Saturday, May 6, 1995, 12:30 PM

Libertytown, Maryland

★ Hosted by: Someday Farm

### Schedule

Friday, May 5

3PM - 6PM - Preview of Cattle

6PM - 9PM - Social

Saturday, May 6

8 AM - 12 Noon - Cattle Viewing

12:30 PM - Celebrate Maryland

The sale committee personally selected these cattle from the area's leading breeders!

Herd Bull Prospect • Show Heifer Prospects  
Bred Heifers • Cow-Calf Pairs

For catalog contact:

Cyndy Howes, Maryland PHA Secretary

1101 Crouse Mill Rd., Keymar, MD 21757 410-775-2205

Sponsored by

The Maryland Polled Hereford Association

"The Home of the Black Eyed Susan"

## ESTATE AUCTION

SAT., JUNE 3, 1995

AT 11:00 a.m.

In the Borough of GRATZ, Upper Dauphin County, PA from Route 25 take Spruce Street, go past the water tower, past Leshner's farm and proposed development (watch for auction sign).

### 37 ACRES

Most all WOODED LAND with some Nice Timber; There is a small open area at the northeast corner. The southern boundary adjoins State Game Land No. 264. A nice MOUNTAIN STREAM and the right-of-way to the Gratz Water Company crosses over this property.

FOR INSPECTION OF RECENT SURVEY OR FOR INSPECTION OF REAL ESTATE CALL: 717-425-3313 After inspection, ARRANGE YOUR FINANCING, BE PREPARED TO BID & BUY AT THE AUCTION!

TERMS: 10% down the day of sale, further terms and conditions to be announced when real estate is offered at 11:00 a.m.

CAROL D. KLINGER,  
ATTORNEY-IN-FACT

for the HEIRS of the HARRY DEWEY SCHMINKY ESTATE, and For the HEIRS of the JOSEPH N. SCHMINKY ESTATE

PFEIFFER, BROWN & BRENNAN

DEIBERT MIKE, AUCTIONEER AU-1599-L (717) 425-3313  
GEORGE, REALTOR & AUCTIONEER, AU-209-L