

**MAILBOX MARKET
FOR SALE**

Antique singer sewing machine model 66 made in 1910. Montgomery Co. 215-699-9010.

1985 Ford 250 truck 4x4 blue, engine, 6 cyl, 4spd, \$5000. Century 150 gallon 3pt crop sprayer, \$450. Lanc. Co. 717-665-6460.

2 horse box wagon, \$650. 2 horse hay flats, \$650. 1 hole corn sheller, \$125. Corn cracker, \$125. Lanc. Co. 717-569-5150.

Farmall rubber nice paint, runs excellent. Farmall 400, excellent condition, nice rubber, power steering, everything works Berks Co. 610-926-8938.

Oliver 3 bottom trailer plow JD transport disc JD 25 combine parts or fix David Bros, \$990 as is. Berks Co. 610-926-8938.

Old Cornell slab saw and 15' slab elevator. Carroll Co. 410-795-0614.

1949 Packard orig. black, \$3750. 1972 TR-6 restorable, \$2000. 1972 double D 2 horse trailer, \$700. Fondosn restorable shed kept. Bucks Co. 215-794-5650.

10x40 Lanc. stave silo, roof and doors, all in very good condition, must take down. Northumberland Co. 717-538-2999.

Rebuilt Rissler conveyor units, I will service, repair, measure up. Rissler conveyors, new parts available, some used, experienced. Lanc. Co. 717-445-7103.

Four western saddles, excellent condition, one with breast strap and bridle. Blair Co. 814-942-0013.

Dodge champion class A MH 29ft, 40600k, 440 gen, roof, air, full bath, new muffler, \$5995, offer, must sell, after 5 p.m. Lehigh Co. 610-767-6562.

5-30", 1-26", 1-24", 1-22", birch flush doors, with brass hinges, natural finish. Lanc. Co. 717-733-2509.

Garden cans or mini greenhouses, heavy plastic plant covers available at Henry Fishers, West Eby Road, Bird In Hand, PA 17505. Lanc. Co.

Fox 2000 chopper/hay, corn, HMEC, flail needs electric sharpener, lots of extras, \$2500. Good condition, field ready. Cayuga Co. 315-784-5554.

Clay 12inch bird feeder, 2 16ft silo unloaders, 1 20ft silo unloader, best offer, you take away. Orange Co. 914-996-7778.

Bunnies-reserve now for Easter. All colors, short/long rex-coated, health guaranteed, \$15 up. Cages/supplies available. Northampton Co. 310-250-9663.

Mortar mixer regular size, new tires, \$400. Cumberland Co. 717-776-3624.

371' detroit, good motor, \$1200. NI 279 cutdioner, \$800. 16ft wagon 6 ton running gear, \$1000. Weekends. Northumberland Co. 717-286-0650.

14' silomatic unloader, evel flo silage dist. and pipe, IH110 forage wagon, 5 hp reartime tiller w/farrow and hiller. Cumberland Co. 717-776-6552.

IN Model 35 hydraulic drive, hayrake rubber mount teach, \$1200. Ontario, NY. 716-554-4506.

1942 John Deere B, new paint, runs good, excellent condition, \$1000. John Deere 720, gas, needs paint. Lanc. Co. 717-354-0176.

1965 Chevy Elcamino factory A/C, P/S, 3spd, all original, Oklahoma car, too much to list. Call Steve. Carroll Co. 410-374-2407.

FMC LV300 PTO 300 gallon sprayer, pump needs rebuilt, needs nozzles, \$400 OBO. Adams Co. 717-337-2458.

3 charrolais heifers polled carrying second calf. York Co. 717-259-7090.

Patz silo unloader 98B, very good condition, out of 20ft silo. Cumberland Co. 717-776-3424.

African pygmy hedgehogs, great pets and breeders. Wanted, good champion juicer w/air motor & carrots. Samuel Lapp, 1598 Noble Road, Kirkwood, PA 17536.

4yr black standard bred family horse, needs more work, \$1250. Bob white quail. Samuel K. King, 3568 Scenic Road, Gordonville, PA 17529. Lanc. Co.

Wheat straw, \$2 bale. Bush hog rotary mower, 5ft, 3pt, model 105, \$395. Fast hitch to 3pt conversion, \$300. York Co. 717-292-6441.

John Deere 999 platless conrplanter new shoes dry fertilizer. Fox terrier stud service. David Stoltzfus, 981 N. Little Britain Road, Quarryville, PA 17566. Lanc. Co.

Lancaster Farming, Saturday, April 15, 1995-E3

Organic round bales, saddle tank sprayer, JD 20' springtooth, excellent, NF 41' elevator, IH 1050 grinder, IH duals. Centre Co. 814-364-9926.

17 calf hutches. Pails and panels included, \$200 each OBO. Wyoming Co. 716-786-8675.

JD 4x16" A1250 plow 300 gallon sprayer, roller pump 30' boom, 2 row JD cultivator, fits JD 50, etc. Warren Co. 908-689-9548.

14ft Oliver disc, \$1500. 3 bottom 16inch 3pt hookup plow, \$350. Montgomery Co. 610-845-2779.

18hp craftsman riding mower with 44" deck, \$950. 1981 Escort, 2 door, real clean, \$975. Dauphin Co. 717-367-3926.

Gooseneck 1971 gore, 28ft wiring, floor carpet, good condition. #1, Box 158, Mount Pleasant, PA 17853.

Mushroom mulch 175 bushel load, \$45 plus delivery. Landscape rocks, \$50 to \$200, delivery extra. Upright piano, \$150. Lanc. Co. 717-786-3872.

Maytag square tub wringer washer, also 30" electric stove, excellent condition. Lanc. Co. 717-445-7117.

Peerless lawn mower sharpener, reel type and knife grinder, antique. Molasses can press mfg. by Star Co Mo. Chester Co. 610-932-3883.

Indian, harley, triumph or other old motorcycles and parts wanted, also wooden wheel bicycles, any condition, cash paid. Lanc. Co. 717-656-4403.

3pt transplanter single row two seats, 1977 23' prowler RV sleeps 6, double doors, 4x8 utility trailer. Balti Co. 410-374-2361.

Five hp briggs. Runs good, new paint. No Sunday calls. Lanc. Co. 717-445-6142.

Old cook stove, full size, almond/green estate, warming closet, water tank, \$250. Lanc. Co. 717-464-3000.

Delaval 1 1/2" pipeline 76 vacuum pump 3 units wash tubs 30" barn fans, like new, metal feed cart. York Co. 717-225-1855.

1965 rambler Marlin V-8 auto, good parts car or restorable, \$300 OBO Lackawanna Co. 717-586-0832.

Allis Chalmers B with plow, mower, cultivator, dish JD40 2 row cultivator, cub cultivator, plow, weights. Lanc. Co. 717-859-2797.

Platform scales Howe, 2000 LB cap, good shape, brass beam, best offer York Co. 717-432-3117.

1st 2nd and 3rd cutting hay at barn, \$1.50 a bale, no rain alfalfa, mixed alfalfa Berks Co. 610-369-0366.

AKC St. Bernard puppies born Feb. 18, black mask and dry mouth and long hair, very pretty, asking \$400. Lanc. Co. 717-733-3608.

IH grain drill 18spout double disk soybean special with grass seed box, very good condition, \$1900. Kent Co. 302-492-3003.

6', 3pth sickle bar mower with extra blade, \$800. 7', 3pth scraper blade, \$300 Outdoor world campground membership, \$7000. Looking for Zoysia grass. New Castle Co. 302-322-6149.

30 head feeder cattle, 400 cat, 2 stage jake, haybuster no till drill, two hay wagons, 16ft, \$500 each. Bucks Co. 215-239-1826.

5 nice holstein steers 700 lb avg. Also, 2 row egg grader with rollaway. Lebanon Co. 717-865-3434.

White #253 disc, 14ft, good condition, \$750. High clearance 10 shank chisel plow, \$550. Chester Co. 610-269-3442.

John Deere 215 disk dura cushion 12'10", good condition, \$1595. No Sunday calls. Lanc. Co. 717-336-6280.

Two seated Mennonite carriage, good condition, \$1500. Lanc. Co. 717-445-5838.

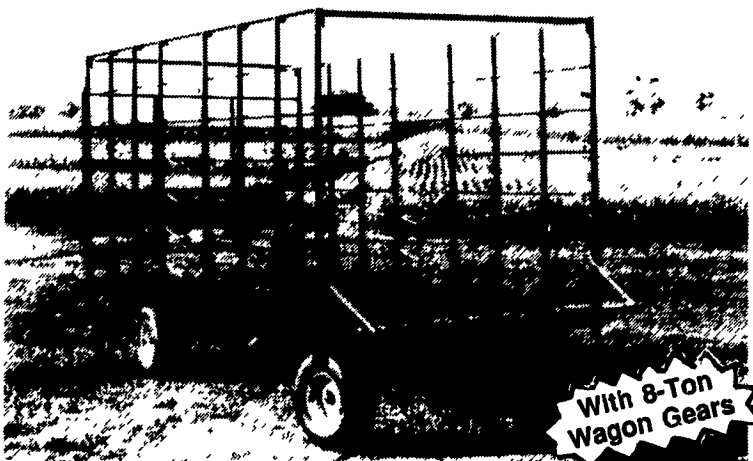
JD 290 old style fertilizer hoppers, good condition, \$125. York Co. 717-266-2582.

Ford 3-14" 3 rh plow, good condition, \$325. Call late evenings. Gloucester Co. 609-478-6090.

8 yr old saddlebred buggy horse, traffic safe, top notch driver, takes two good arms to drive, but not 100% sound, \$15. Aaron Miller, 107 S. Maple Avenue, Leola, PA 17540. Lanc. Co.

JD chisel plow, 3 pth, 10', \$650. IH 470 12' transport disc, best offer. 4 row cultivator, 3 pth, s-shanks, g-wheels, \$350. Northampton Co. 610-759-1307.

STEEL BALE BOXES



With 8-Ton Wagon Gears

3 Sizes Available - 16', 18', 20' with or without running gear
• Also: will fit sides onto your flat wagon

NEW PRODUCTS!

Double Rake Hitch

Farm Gates Made To Your Specifications

MFD BY: **GAP HILL FARM WAGONS**
5549 Lincoln Hwy. - Gap, PA 17527 717-442-9489
Call Bet. 8:30 & 9:00 A.M.

**Increase Your
Income
From Milk Sales**

We are looking to increase our high quality milk supply in Chester, Berks and Lancaster Counties.



- No Coop Dues
- Solids Non Fat Premiums
- Quality Premiums
- Lower Hauling Rates & Stop Charges

From a proud neighborhood dairy in the 1920's to a modern manufacturing company of the 1990's, the Dietrich family-owned business continues to move forward. With the dedication of three generations and a heritage rich in experience and innovation, Dietrich's Milk Products faces the future with confidence. Give us a call and see what we are all about.

Dietrich's Milk Products, Inc.

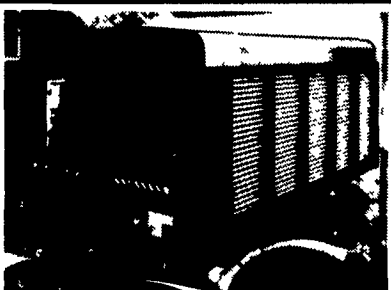
100 McKinley Avenue
Reading, PA

Field Representative
Daniel Vosburg • New Holland, PA
(717) 354-5562

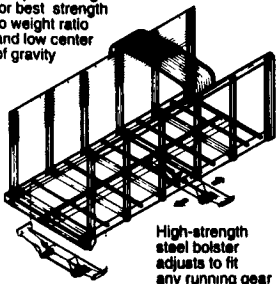
**MILLER PRO
Model 5100 Forage Boxes**

Front Unload Forage Box

- Independent feathering clutches for metering augers and outfeed
- 4-Speed transmission operates in a sealed oil bath
- Wide body and crop clear roof
- Utilized high strength steel box on all 5100 models assures dependability and long life



The 5100 Box is computer designed for best strength to weight ratio and low center of gravity



High-strength steel bolster adjusts to fit any running gear

4-Speed shift-under-load gear transmission operates in an enclosed oil bath for long life

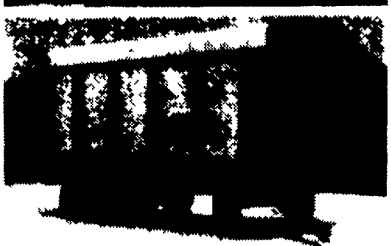


Rear Unload Forage Box

- 30-second mechanical unloading
- Unobstructed unloading with high rear door hinges
- Automatic rear door

Front & Rear Unload Forage Box

- Positive mechanical 2-direction drive
- Easy direction change by simply moving a drive coupler
- Super slippery Poly-clad floor eases 2-way unloading



Optional Miller Pro Running Gear

• Choice of models from 10 - 18 tons • Channel design provides flexible strength for best stability and tracking



Miller Pro Retail Financing
Great rates and broad payment options
1-800-247-5557

**MILLER
ST. NAZIANZ**

Profit Making Products for the Professional Farmer

**MORTON BUILDINGS
Since 1903**

- Horse Barns
- Riding Arenas
- Garages
- Warehouses
- Offices
- Shops
- Equipment Storage
- Aircraft Hangars



MORTON BUILDINGS, INC.

Excellence — Since 1903

CONTACT:

3368 York Rd.
Gettysburg,
PA 17325
717/624-3331

P.O. Box 126,
Phillipsburg,
NJ 08865
908/454-7900

Call or write today for more information

1-800-447-7436

Illinois only, call 1-800-426-6686