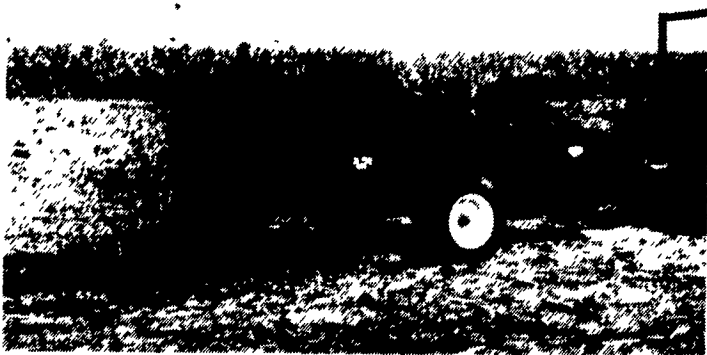


At Last... A Line Of Manure Spreaders Designed For The Low-Input Farmer.

Affordable and well-built, but no extra frills design. Made for the way you work.



- 7 Sizes available from 25 to 128 bu.
- Ground Drive or PTO.
- High-Density polyethylene floor comes with 20 year warranty.
- Prices start under \$1,000 (plus freight)

If you're in need of a manure spreader but can't justify spending \$4,000 for one, then call us now for a free brochure and price list.



2617 Stumpton Rd., Dept. LF
Bird-In-Hand, PA 17505
(717) 656-3050

Dealer Inquiries Invited



FOR SALE
1991 Case Int. Magnum Tractor 7130
4-WD, 900 Hrs., 20.8-42 Tires, 4 Remotes, Loaded with Extras, Excellent Condition.
410-343-1190



Peabody-Barnes 6" Water Pump
353 Detroit Diesel
\$3,550

Curry Supply Co.
Curryville, Pa
1-800-345-2829

HARLY RAKES

6 ft & 9 ft
For Skid Steer/Bob Cats
Like New \$4100 EACH
Ringo Hill Farms Equipment Co., Inc.
1624 Rt 212, Quakertown, PA 18951
(610) 346-7340

Martin Tractor

866 Greenspring Rd.
Newville, PA 17241

Used Tractors White 2-85 \$8,000. JD 4040, like new, 221 org. hrs.; JD 4030 \$9,500; Case SI \$600; JD 620; IH 450 \$1,800; Farmall H, \$1,100

Used Tractor Parts

Most Makes and Models Have Large Selection
Recent Arrivals: Case 630; JD 520; JD 4520; JD 70 Dsl.; Ford 960; JD 2020; JD 3020; Case 1070; AC 180; AC 190 XT; Case 580; Oliver 88; Case 580; JD 4020; Ford 7700; IH 756; JD 60; AC XT190; Case 970; IH 1586; White 2-150; MM 445; Oliver 55; IH 444; IH 504; IH 656, IH 2400



JD 48 Loader w/ Bucket & Bale Fork also 4020 Brackets **\$2,900**

Call (717) 776-7542 6057
(717) 776-7327 Fax
for detailed information
MON-FRI 8-5 SAT 8-12
No Sunday Calls Will Ship UPS
No Out-Of-State Personal Checks

USED TRACTORS

- | | |
|-----------------------------------|--|
| JD 4050, cab & air, PS, 970 hrs. | JD 4230, cab & air, quad |
| JD 5010 | JD 5020, low hrs. |
| JD 4440, cab & air, PS | JD 2955 |
| JD 4440, cab, air, quad range | Case IH 2096, 1987, excellent |
| JD 4430, cab, air, quad range | Case IH 895, cab & air w/2255 loader, 1,100 hrs. |
| JD 2350 | IH 5120, 4WD w/loader, 800 hrs. |
| JD 2350, 4WD w/loader, 1,000 hrs. | IH 986, cab & air, sharp |
| JD 4320, cab | IH 966, 1 owner |
| JD 4320 | IH 886, cab & air, 2,800 hrs., sharp |
| JD 4250, Quad, Sharp | IH 686, diesel |
| JD 4240, cab & air, power shift | IH 684 w/2250 loader |
| JD 4240, cab & air, syncro | IH 656, diesel |
| JD 4240, cab & air, quad range | IH 595, 650 ho. SOLD like new |
| JD 4040, cab & air, quad | IH 140 w/cultivator |
| JD 4030, quad range, 4 post | Ford 6610, 1,400 hrs. |
| JD 4020, side console | Ford 5610, 900 hrs., like new |
| JD 4000, diesel, very good | Ford 3910, MFWD, 700 hrs |
| JD 3020, diesel, excellent | Ford 3430, like new |
| JD 3020, diesel, SOLD hrs | MF 231, new |
| JD 2950, cab & air, 2,200 hrs. | MF 275 w/ loader |
| JD 2940 | MF 1080, excellent |
| JD 2840 | MF 1085 w/cab & air |
| JD 2440 w/cab | Oliver 1850, gas |
| JD 2240 | |

INDUSTRIAL

MF 200 diesel crawler loader, 4 in 1 bucket

USED PLOWS

- | | |
|----------------------------|---------------------------------|
| IH Consortill 10' | JD 2500 5 btm. 18" spring reset |
| IH 710 5 btm. spring reset | JD 2500 6 btm. auto reset |
| IH 710 6 btm. spring reset | |

USED COMBINES

- | | |
|---------------------------------|------------------|
| 244 JD corn heads | JD 215 flex head |
| 444 JD corn heads | JD 213 flex head |
| JD 444, low tin, oil bath | JD 3300, gas |
| JD 643 corn head, excellent | JD 4400, diesel |
| IH 943 4RN corn head, excellent | |

HAY EQUIPMENT

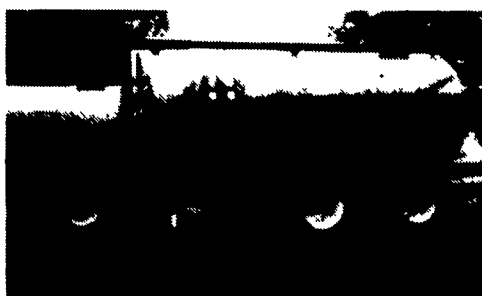
- | | |
|------------------------|----------------------|
| NH 472 haybine | Kuhn 4 Star Tedder |
| NH 851 round baler | NH 256 Rake |
| IH 2400 round baler | Kuhn Rotary Rake |
| JD 337 Baler w/Thrower | Deutz rotary rake |
| JD 466 baler, wire | JD Rake w/Dolly Whl. |

MISCELLANEOUS

- | | |
|---|--|
| Gehl Scavenger 315 manure spreader, very good | Miller 12' offset disc |
| NI 323 corn picker | Taylorway 25' disc |
| IH 510 grain drill, DD opener | JD 110 disc |
| Gehl 800 recutter | JD 115 disc |
| Brillion 21' hyd. fold roller harrow | Glenco soil finisher, 12' |
| JD 7000 6 row planter, dry fert. | AC Air Champ 8 row bean planter, no till |
| Gehl 95 grinder mixer | 18' IH field cultivator, hyd. fold |
| IH 496 19 1/2' hyd. fold disc | JD 6 row cultivator |

(SLURRY BUGGY)

We have on stock liquid manure spreaders and agitators for your spring work



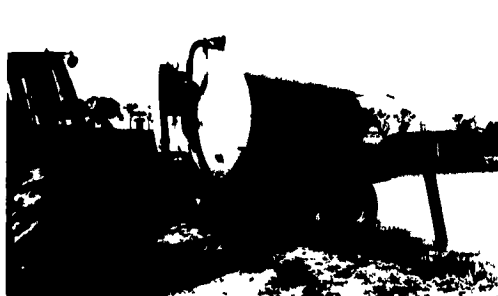
Our equipment is in use by farmers, rendering plants, sludge contractors & processing plants

BIG JAKE

5000 Gal. Top Load Spreader
1/4" thick tank
4" spindles and 16,000 lbs. stress proof spindles
hyd. brakes
large flotation tires

2 In Stock **\$13,500**

2900 Gal. Vacuum Tank w/8" Loading Boom



HAUL LIQUID MANURE ALL DAY WITHOUT GETTING OFF THE TRACTOR SEAT USING THE SLURRY BUGGY EASY LOADER. THE SLURRY BUGGY IS DESIGNED FOR YOUR MANY LIQUID MANURE HANDLING JOBS.

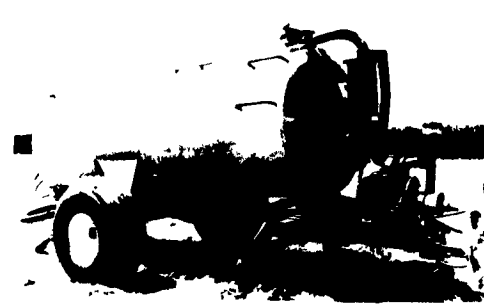


Loading out of pit with 8 in boom



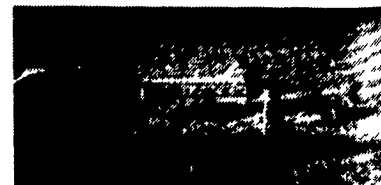
Unloading with your pick of three different spreading patterns of spring loading injection

1500 Gal. Vacuum Tank



- ✓ A 6-inch hydraulic operated brass valve for unloading
- ✓ Has 3 different manure spreading patterns
- ✓ Tank has a float level indicator and sight glass
- ✓ A 20-inch rear manhole for easy access to tank
- ✓ Tanks are made of 5/16 thick metal
- ✓ Large air-cooled vacuum pump

This 3 point hitch Slurry Mixer's large 22" propeller produces a strong undercurrent that moves liquids, floating chunks of crust, weeds, bedding and dried manure into the propeller that chops, mixes and blends your manure into an even liquid slurry.
Priced at \$2,885



Spreaders For Rent

SLURRY BUGGY EQUIPMENT
327 Stackstown Rd.
Marietta, PA
717/426-4919

Used Spreaders For Sale

- 2 - 1500 gal. Vacuum Spreaders
- 1 - 3200 Gal. Top Load - \$2,900
- 1 - 5000 Gal. Top Load
- 1 - 3 Point Plow Down 4-Tooth For Spreader or Drag Hose - \$1,000

D & R EQUIPMENT INC.

Rt. 579, Ringoes, New Jersey
(908) 782-5082