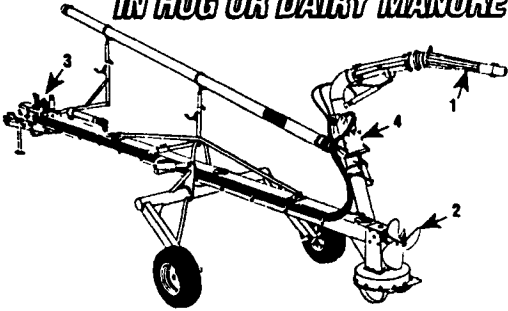


TRAIL AGI-POMPE®

32' AND 42' FOR LAGOONS

**GREAT PERFORMANCE
IN HOG OR DAIRY MANURE**



In Stock For Immediate Delivery

- 1- Highly articulated nozzle designed to slice and break the top crust from above the manure level as the propeller homogenizes the liquid with the remaining floating chunks.
- 2- 24" dia. mixing propeller providing full time agitation up to 21,500 US G PM even when loading a spreader
- 3- Hydraulic controls can be operated from tractor seat.
- 4- Rotative directional valve designed to be operated at low RPM without stopping the PTO

Gear box oil bath protected by a greaseable 3 seals mechanism on each shaft.

AVAILABLE WITH MULTIPURPOSE OPTION TO ALSO CLIMB INTO CONCRETE PITS UP TO 14' DEEP.

FOR RENT SPREADER TANKS and LAGOON PUMPS

HOULE FARM EQUIPMENT MANUFACTURER

"We're Here To Serve You"

SNOOK'S EQUIPMENT

RD 3, Box 130, Mifflinburg, PA 17844
717-966-2736
Ask For Ernest Or Dean

- Kubota Tractor Model M5030 SUMDT
49 PTO H.P. \$20,587.00
 - Kubota Tractor Model M8580 DT
80 PTO H.P. \$32,000.00
 - Kubota Tractor Model M9580 DTC
91 PTO H.P. \$40,500.00
 - White-New Idea Corn Planter Model
6100 equipped with everything
available. Planted 200 acres.. \$19,000.00
- CASH - NO TRADES**
(717) 398-1391

KELLER'S FARM MACHINERY

116 Richlandtown Pike
Quakertown, PA 18951
215/536-4046

TRACTORS

- JD 1450 4x4
- JD 2440, 2300 hrs.
- JD 401D w/Loader
- Ford 4600 w/Ford Loader
- Ford 1720 w/6' Woods mower
- Ford 445A, 4x4 w/Loader, 3 pt. PTO
- Ford 1100 w/4' Bush Hog
- Ford 4610, 8 Speed, New Tires & Paint
- Ford 8210 4x4, cab, air
- Ford 9N w/loader
- Ford 8N w/Snow Plow
- Ford 1715, 4x4 w/Snow Plow
- Ford 3910 w/Ford 776B loader
- Ford 1710 w/Ford 770B loader
- Ford 3000 diesel, 8 speed, live pto
- Ford 555A, Tractor Loader Backhoe
- Farmall C w/single front wheel
- AC 5020 w/Woods mower
- Ford 4600D, w/cab
- Ford 6610 Series 2, fully equipped
- Ford 4630 fully equipped, like new
- Ford 3230 w/300 Hrs.
- Ford 3910 Series 2, 8 Spd. w/snow plow
- Farmall Cub w/Woods Mower
- IH 300 w/Loader & Fast Hitch

IN STOCK

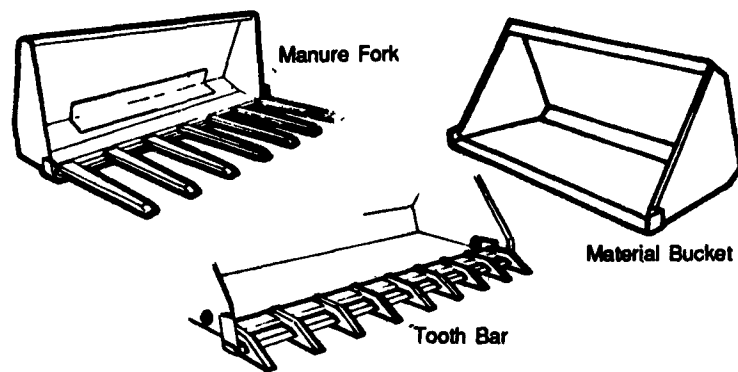
New Idea H. Duty Webs for No. 8-9-10-12-14-17 and 206 • Oliver No. 7-17-170 • John Deere No. H-L-M-K R-W • Also Case T-6

\$154.00 While Supplies Last.
All other webs on request.

New and Used New Idea Spreader Parts
Call at (717) 658-2237 12:00 to 12:30 Noon
Ask for Josie Hostetler, or write to:

Hostetler's Machine
RD 1 Box 243-A Reedsville PA 17084

ATTACHMENTS for Skid Steer Loaders



- Standard or Custom Sizes
- Hardened, Beveled Edge
- 7 gauge Material (other gauges available)

Call for a Quote!

PA (717) 354-8721

US (800) 342-0905

ATI

CORPORATION

325 West Main St., New Holland, PA 17557

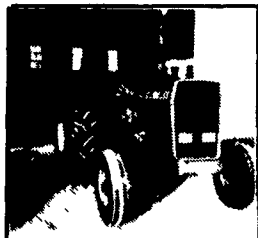
BARGAIN HUNTER VALUES

Track Down BIG BUYS ON QUALITY Used Equipment



110 South Railroad Ave.
New Holland, PA 17557
(717) 354-4191

M-F 7:30 to 5:00
Sat. 7:00 to Noon



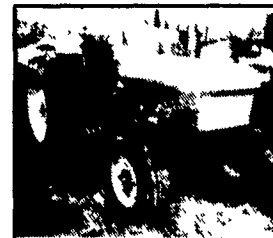
MF 283 65 HP, 400 Hours
\$12,900



Ford TW5 MFWD,
120 HP



(2) NH 256 Rakes,
Excellent Condition



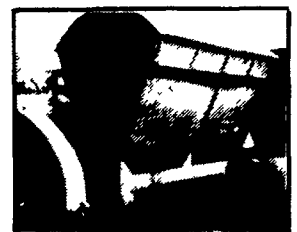
Ford 2110 35 HP, Diesel
\$6,950



Ford 1710 Offset Tractor with
Cultivator
\$14,500



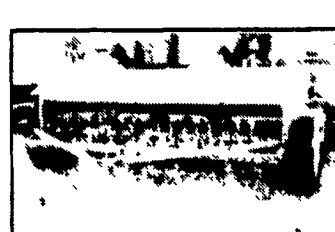
NH 489 Haybine, 9 Ft.,
Like New
\$5,900



Richardson Dump Wagon
\$4,900



NH 900 Harvester With 824 2
Row Corn Head And 900W Hay
Pickup \$10,500



JD 8300 18x7 10 ft.
Grain Drill
\$2,990



Ford 4100, 45 HP Diesel
with Loader & Rear Blade
\$8,900



NH 1033 Bale Wagon
\$7,900



JD 6500 Self Propelled
Sprayer With 60 Ft. Hydraulic
Fold Boom, Used 1 Season



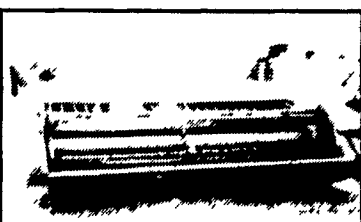
JD 335 Round Baler
\$9,500



JD 4040, 90 HP
\$18,500



Kuhn GMD 77 HD 9'2" Cut
Disk Mower - Used 1 Season
\$4,650



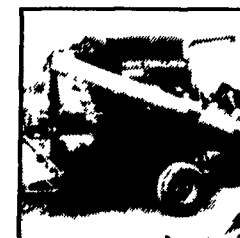
JD 1219 Mower
Conditioner, 9 Ft., Good
Cond. \$4,750



NH 355 Grinder Mixer,
100 Bu., Hydraulic Drive
\$6,900



Ford 545 2WD
Industrial w/Loader
\$14,900



NH 357 Grinder Mixer with
Electronic Scales
\$4,900



NH 795 410 Bu. w/Upper
Beater
\$6,900