

SIMPLY GRAND



Kubota introduces their new Grand L-Series diesel tractors. Compact models ranging from 25 to 37 PTO HP, with the features and options to work any farm or ranch.

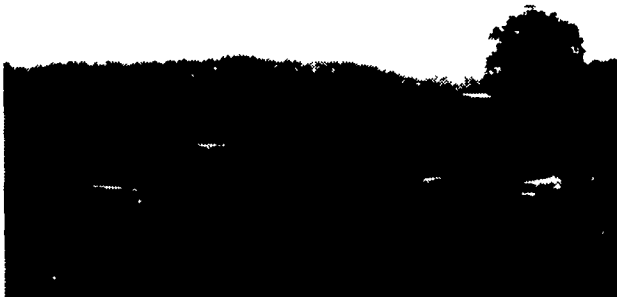
The 2WD and 4WD Grand L-Series are powered by Kubota's low noise and vibration ETVC5 diesel engines.

Choose from Kubota's Glide Shift or Shuttle Transmissions. A Creep Speed option is available for planting and spraying.

Tilt wheel, power steering and full-floating ISO mounted operator's deck lets you work in comfort. Optional cab available for the L3600 and L4200.

Heavy-duty hydraulic system, independent PTO and hefty 3-point hitch keeps the Grand L-Series working from seed to harvest.

Take a look at a Grand L-Series today, and see why we call them simply grand.



Kubota Tractor Corporation markets a full line of tractors through a nationwide network of over 1,000 dealers

Kubota

See Your Local Kubota Dealer

PENNSYLVANIA
Altoona
HINES EQUIPMENT
814-742-8171

Chambersburg
STOFFER BROS., INC.
717-263-8424

Jersey Shore
THOMAS L. DUNLAP
717-398-1391

Mifflinburg
MIFFLINBURG FARM SUPPLY, INC.
717-966-3114

West Chester
WENNER FORD TRACTOR, INC.
215-399-9615

Hainesport
MATERIAL HANDLING SYSTEMS
609-267-6100

Bloomsburg
TRACTOR PARTS CO.
717-784-0250

Cochranville
STOLTZFUS FARM SERVICE, INC.
215-593-2407

Honesdale
MARSHALL MACHINERY, INC.
717-729-7117

New Berlinville
ERB & HENRY EQUIPMENT, INC.
610-367-2169

York
YORK TRACTOR, INC.
717-764-1094

NEW JERSEY

Flemington & Clinton
PONIATOWSKI BROS. EQUIP. CO. INC.
908-735-2149

DELAWARE

Newark
NEWARK KUBOTA, INC.
1-800-955-3031

Coudersport
HOWARDS OUTDOOR POWER EQ.
814-274-9800

Elizabethtown
MESSICK FARM EQUIP. INC.
717-367-1319

Lebanon & Lancaster
KELLER BROS. TRACTOR CO.
717-949-2000
717-569-2500

Reading
NICARRY EQUIPMENT, INC.
610-926-2441

Lancaster Farming, Saturday, April 15, 1995-D5

AERATOR Airway 7 3 pt., excellent, \$3,000. 410-833-9091

Agco 5670, 65hp, 2WD, 16x16 trans, 16.9x30 radial 540/1000 PTO, new tractor, exceptional good price. 717-532-7261.

Agriculture plows for a Cub fast hitch and regular hitch. 814-767-8152.

Athens 7-tooth 3pt chisel, \$1150; White #348 3X plow, nice, \$875; NH #663 tank spreader, nice, \$1850 Berks Co. 610/562-4464.

JD 4430 SGB, QR, 5500 hours, excellent condition, \$17,000. Evenings, (410)592-5347.

B8200 Kubota, hydrostatic, 4x4, turf tires, w/belly mower & loader, good condition, \$9000. Woods 10' offset trailer type rotary mower, \$1500. 717/361-9296.

BACKHOE ATTACHMENT BRADCO 3 pt, like new, \$3,200. 410-833-9091

4R7000 cornplanters. 5 to choose from. 4R7200 cornplanter with vacuum, liquid fertilizer, insecticide, monitor. Planted 28 acres. 8R7000, liquid fertilizer, insecticide, monitor. Soybean attachments for 7000 planter, \$15 each. 7am -7:30am, (717)442-4406.

New 4x4, 40hp, diesel tractor, cab, heat, live PTO, hyd., \$11,500. Trades welcome. (717)485-5372, (717)485-3181.

510 MF combine, excellent condition. 40' grain trailer. 2R Oliver potato digger. 445 Long diesel tractor. (609)897-1870.

6070 AC, just overhauled, new paint & batteries, good rubber. Call 610-932-8999.

6' Ferguson Dyna-balance mower w/all pins & brackets, good end, \$150; Woods 5' 3pt rotary mower, \$300; 4' cultipacker, \$100. 717-534-1253.

(6) Nitrogen tanks: 20,000 RR car tank, 10,000 RR car tank, 12,000 steel vertical tank, 12,000 aluminum vertical tank, 6,000 steel tank, 8,000 steel tank. Also Nitrogen pumps. Call 717-362-3333.

720 IH forage harvester with electric controls, open-end hay pickup, low-profile 2RN belt cornhead, field ready, \$2450. 717/445-8422.

'75 Gleaner F diesel combine 1,250 hours, 13' grain head, 430 corn head, asking \$7,500. NH 78 baler V-4 Wisconsin engine, low hours. Both kept inside. (908)782-5675.

(2) FMC-GB110 green bean multi-row harvesters, hydro, 4WD, cab & air, excellent condition. 609/935-0348.

2-Goodyear tractor tires, 12.4x36, 90% tread, age crack but useable, \$95.00 each; 717-872-5007.

2H Braco Seem model potato harvester. Excellent condition, garaged, and ready to go. Extra parts included. \$12,500. (610)767-5715.

2R Holland transplanter w/ water and fertilizer attachment. (516)734-6847

300 Gallon 3Pt. Hitch Demco Sprayer, 45' Hyd Booms, Electric Controls, Like New. \$3800; Chester Co. (610)286-6981.

3300 gallon Butler tank spreader, 21.5x16.1 tires, VG condition, (717)597-5623.

3350 Kubota, 4WD, BS800 front-end loader, 680 hrs., Sims cab, ROPS, \$11,500. 6 0 9 - 9 6 5 - 3 0 0 4 ; 609-965-4619.

354 NH grinder mixer w/ scales, good condition \$2650.; 717-354-6829.

35' Transport auger w/5hp reconditioned electric motor, \$400; S.H. JD adj. rear axle w/900x24" wheels, \$700; like new fly wheel JD #AR63070 from 404 combine engine, \$350. 717/867-4538.

3 old gas engines: 1 1/2 hp units, 2hp Witte, 2hp Stover, all on 4-wheel carts. 717/672-2651 after 6pm.

3pt wood saw complete w/ belt and pulley, \$125; Valve and bracket for 158 JD loader, \$125; JD KBA 9' disc w/cyl. and drag, \$525. 717-534-1253.

410 MF combine w/4RN corn head, \$2000 firm. 717/658-7485.

4 cyl. Water Cooled Gas Kohler power generator, 7.5 KW, heavy duty, 30 amps, 110/220V, w/40,000 btu super heater, like new, w/out trailer, new \$12,000; Our price \$4500.00 obo; 717/542-4187/4068 or 4291.

250' Badger barn cleaner chain w/paddles, used very little. Best offer. (717)758-2136.

25KW Windpower Generator on Trailer; 3RN International Corn Head for 720, 781, 830, or 881 Harvester (717)933-8269.

2706 industrial farm tractor, 1965, WF, C282 motor, new tires, completely rebuilt and painted, mint condition, \$8,500. Details call (301)678-5162.

285 Van Dale mixer wagon, reconditioned, working scales, \$4000 OBO. Franklin Co. 717/369-2138.

28' Hutchinson transport grain auger. Montgomery County, (215)699-9010.

DISMANTLING FOR PARTS: Just arrived for parts. 2 Case 580 CK backhoes. Lots of good parts available.

BALANDA EQUIPMENT P.O. Box 407 RT 29 Palm, PA 18070. 1-800-322-8030

BUY, SELL, TRADE OR RENT THROUGH THE

CLASSIFIED ADS

PHONE: 717-626-1164 or 717-394-3047

FAX 717-733-6058

Mon., Tues., Wed., Fri. 8 AM to 5 PM; Thurs. 7 AM to 5 PM

1 FARM EQUIPMENT

AC 190XT series III, 3420 hours, Brady 2 bar, 3pt, 9 shank, chisel plow. All machinery VG. Call after 6PM or Sat., (215)723-5355.

AC 2500 12' rock flex disc; Kagle 500 gal. sprayer, 40' booms; McCurdy gravity box and running gear; Poly tanks, 300, 500, 1050 gallons. 717-597-5443 NO Sunday calls.

9 Sherk chisel plow. Oliver 18 combine with grain bin. 814-629-6733.

AC 600 no til, 6R, good condition \$900.; JD 95 combine, 13' platform, 3 and 4 cornhead, good condition \$1200.; 955 Cat. trac loader, \$1200.; 410-335-8331 after 5pm.

AC 7030 diesel, 130 hp, cab, 20.8x38, \$4,000. (301)898-7426.

AC Model #333 Air Champ no-till planter w/monitor, \$1200 or best reasonable offer. 717/437-2354; 717/437-3891.

AC 10' field cultivator w/ rubber blocks, rake teeth in back. Myerstown, PA, (717)866-2135.

AC 170 tractor, wide front, original paint, 4-spool hyd. system, completely overhauled recently, good rubber, new brakes, very good condition w/front-end loader, dirt pan and snow bucket. 717-284-4722.

AC tractor 7060, has cab, power shift, power steering w/air \$14,900., MF 1085 w/ cab, power steering, power shift \$13500. obo; Baker Equipment 1-800-737-0689.

AC WC, runs and drives good, parts or restore, \$425. 610-759-4273.

AC WD 45, gas, 45 h.p., live PTO, fresh overhaul, nice, \$1,800. 410-833-9091

(2) Gorman-Rupp 64 AG PTO Irrigation pumps. Complete system in excellent condition. Garaged when not in use. 25 aluminum 5"x30" pipes and about 380 aluminum 4"x30" pipes, all w/Race and Race-couplings. About 150 Rain-bird sprinklers plus all fittings needed. Call for appointment to see at (610)767-5715.

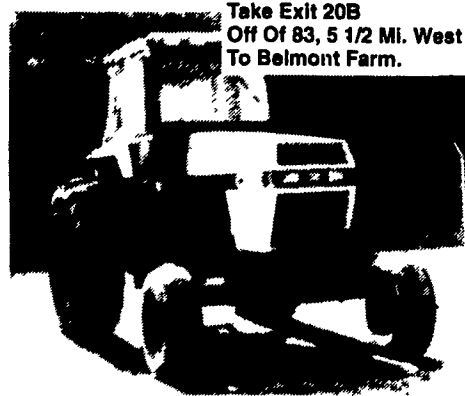
(2) JD 8300 18x7 drills; (3) IH 5100 drills. Zeisloft Used Equipment, 800/919-3322.

2pt. hitch equipment: plow 2-16, corn planter w/ fertilizer, platform carrier, scoop. A-1 condition. \$650/all. Farmall B w/ more, needs work, \$850. 410/721-2897.

87 MF-30E Tractor/Loader 3Pt. PTO Hydra-Shuttle ROPS \$9900; 91 CASE/IH 22HP Diesel 4X4 ROPS/Canopy 3Pt. PTO New Front Snow Blower New Finish Mower \$10900; 91 CASE/IH 45HP Diesel ROPS/Canopy Shuttle 3pt PTO 16.9X24 Turf Tires 142hrs; \$16900 (perfect for loader) MAKE OFFER; 71 CASE 580CK Tractor w/ Bomford Boom Mower \$4900 (609)466-2953.

8N Ford Tractor w/Front End Bucket Loader. Also Power Take-Off Pulley w/ Wood Cutting Saw Attachment. \$3500. Annville. (717)867-1681 After 6PM.

900 NH harvester, Metal Alert II, and hayhead, \$8000. 717-933-5771.



Case 2294
Duals, Good Condition
\$13,900

Also Available:
Case 2090, CAH \$9,800
(Not Actual Photo)

410-833-9091

Take Exit 20B
Off Of 83, 5 1/2 Mi. West
To Belmont Farm.