

C.P. MARTIN FORD, INC.

RT. 272 ACROSS FROM THE GREEN DRAGON SIGN IN EPHRATA-THE HEART OF LANCASTER COUNTY

733-6644 OR 1-800-258-2677



'95 FORD F250 XLT, 4x4
7.3 Power Stroke Diesel,
5 Spd., A/C
HARD TO FIND



'95 FORD F150 SUPER CAB
4x4, Loaded
8 TO PICK FROM



'90 FORD F-150 4X4,
V8, 5 Speed, Blue
(6072A)



'90 CHEVY C1500
4x2, AT, Red, 39,000 Mi.
(P409)



'92 FORD F150 4X2,
Supercab, XLT, Auto., Loaded
(6052A)



'92 FORD E-350,
15 Passenger, Red, Loaded
(N613A)



'91 FORD F150 4x4
XLT, 5 Spd., V8
(P418)



'89 FORD F-250 4X2,
Supercab, V-8, Auto., XL
(F107)



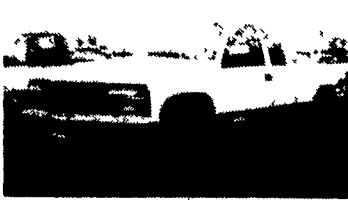
'93 CHEVY SILVERADO 4X4,
V-8, Auto., 10,000 Miles
(F135)



'92 FORD F150 4x4
6 Cyl., AT, 22,000 Mi.
(6120A)



'90 CHEVY 2500 SERIES
Ext. Cab, XLT, 4x2, Loaded
(6147A)



'93 CHEVY Z-71 SUPERCAB,
V-8, Auto., 40,000 Miles
(P411)

1986 Landoll
Hyd. detach 48' trailer,
Air ride tandems,
beaver tail, top deck,
good condition
\$15,000
717-265-9014

1992 Ford F-250 4x4 7.3 Diesel Br. Red,
Absolutely Sharp, 24,900 Miles, Loaded,
Stock Tires Go With 5,000 Miles On Them
\$18,900
Alger Farms Weekend Truck
717-838-7983 after 7:00 p.m.



TRUCK SPECIALS



1994 Ford E-250 Cargo Van, 6 Cyl,
Auto, AC, 6,000 Miles, Like New



1995 Ford F Super Duty Dump Truck
Turbo Diesel, 5 Speed



1995 E150 Cargo Van, V8, AT, AC
Was \$20,168 Now \$17,995



1995 Ford F150, 4x4, 6 cyl, 5 sp, AC
Was \$18,568 Now \$16,995



1995 F250 4x4, V8, AT, Good Work
Truck Was \$21,740 Now \$19,995



1995 E350 Super Cargo Van Turbo
Diesel, AT, AC, Hard To Find

WALFORD
OF EAST BERLIN

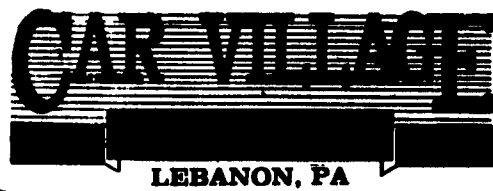
HOME OF AFFORDABLE FORDS
Call Toll Free 1-800-246-0395 or 259-6334

314 Harrisburg St.
Rt. 194 N
East Berlin, PA

Nicest
Pre Owned
Trucks
Anywhere!

RTE. 422 WEST
LEBANON, PA

(Across From Lebanon
Valley Mall)



PHONE
717-274-2000

Business Hours
Mon-Thurs 9-9
Fri & Sat 9-4

SPECIALIZING IN HEAVY DUTY TRUCKS



DIESEL 4x4 90 FORD F-250 XLT
7.3 Diesel, Auto., A/C H.D. 8600
GVW, Dual Tanks, Gooseneck Hitch



4x4 Chassis
94 Chevy 3500 Silverado
Long Wheel Base, 84" C.A. 454 I.I. 5 Sp O/D,
A/C, Only 19,000 Miles, Factory Warranty
A Real Powerhouse, Very Rare



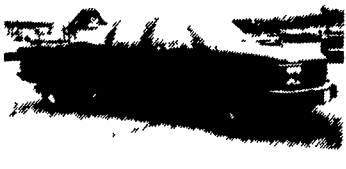
4x4 Diesel
93 Ford F-250 XLT
7.3 Diesel, Auto, A/C, H.D. 3/4 Limited
Slip Axle, 31,000 Miles



DIESEL CARGO VAN
91 Ford E-350
Extended Length, 7.3 Diesel, AT,
A/C, 50,000 Miles, Real Clean



CAMPERS DREAM
95 FORD CLUB WAGON
Only 3,400 Miles, All New Truck Warranties, 7.3
Diesel, AT, Frt. & Rear Heat & A/C, Captain Chairs
& Fold Down Sofa Bed



BIG CHEVY
4 Door 4x4 93 CHEVY
A Beauty, 24,000 Miles, Silverado,
Tow Pkg., Super Clean, 454 I.I.,
AT, A/C



ALUMINUM WALK IN
93 GRUMAN
18 Ft. Aluminum Body, 350 Chevy, V8,
Auto, A/C, Roll Up Back Door,
1600 Lb. Lift Gate



35,000 MILES
88 FORD DUMP TRUCK
Super Duty, 14,500 GVW, Big & Strong
480 I.I., 5 Spd., A/C, 9 Ft. Bed, Class 3
Hitch, Real Clean - Come See



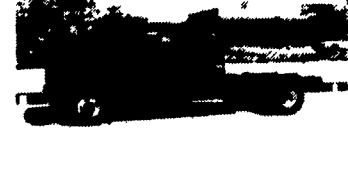
FOUR DOOR 4X4
90 Ford F-350 XLT
Real Nice, 47,000 Miles,
They Don't Come Any Nicer,
480 I.I., Auto. O/D, A/C, Tow Pkg.



FLATBED DUMP
90 Ford F-350
Ready For Business, 80,000 Miles, 480 I.I., 5
Spd., Excellent Body, 12 Ft. Wood Floor



Super Duty
94 Ford Dump
Big & Strong. Brand new dump body &
Hoise 18,000 miles on truck
Factory warranty remains



Diesel 4 DR Chassis
90 Chevy 3500
Ready for The Workers or The Family,
6.2 Diesel, 30,000 Original Miles, Vinyl
Seat & Mat



STAKE BODY 88 FORD F-350
12 Ft., Steel Body, 480 I.I., 5 Sp., O/D,
11,000 GVW, 48,700 Miles



85 FORD F150 4x4
6 Cyl., 4 Spd., Lock Out Hubs, Good Body,
Runs Great \$4,900



DIESEL POWER
88 FORD F-SUPER DUTY
Ready For Your Box 7.3 Diesel, H.D., 6 Spd., A/C,
Long 181 W.B. 84" C.A., 14,800 GVW



DIESEL
BLAZER 94
CHEVY 4X4
Rare, Hard to Find,
6.5 Turbo Diesel,
AT, A/C, Loaded, All
Options, Drives
Like A Dream,
Excellent Fuel
Mileage



1 Ton 4x4
89 Ford F350 XLT Lariat
7.3 Diesel, AT, A/C, Solid Frt. Axle,
58,000 Miles, Probably The Nicest
Anywhere, Heavy 8,000 GVW



DIESEL 4DR DUALY 85 FORD F-350
Very Clean Trk, 6.9 Diesel, AT, AC, Tow Pkg,
Excellent Body



4x4 Stake Dump, 88 FORD F-350
50,000 Miles, 480 I.I., 5 sp, 4:10 Gearing, Lock In
Hubs, 11 Ft. Aluminum Heavy Bed, Tool Boxes,
Ready For Business



\$19,900
93 FORD F-250 4X4
Diesel Power, AT, A/C, XLT Lariat, H.D. 8600, GVW,
31,000 Miles, New Trk Warranty Remaining