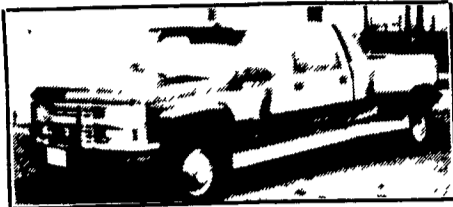


# Frederick's

The SUPERMARKET OF TRUCKS  
 (717) 274-1461 • PA (800) 222-5523  
 1505 Quentin Rd., Rt. 72 South, Lebanon, PA

## SUPER CLOSEOUT SPECIALS



### 94 CHEVROLET 3500

6.5 Centurion Conversion Dual Rear Wheels, Loaded #523

Regular Price **\$36,958**

Less Frederick Discount **7,122**

**CLOSEOUT PRICE \$29,836**

10 Others In Stock at Big SAVINGS



### 94 CHEVROLET CONVERSION VAN

(Gladiator) Loaded #640

Regular Price **\$23,774**

Less Frederick Discount **4,675**

**CLOSEOUT PRICE \$19,099**

40 Vans In Stock At Big SAVINGS

### 7'x16' Moritz

Gooseneck livestock trailer, like new.

**\$4200.00**

Call 717-966-3685

### E-TOWN DODGE

1995 BR 3500  
4x4, Cab Chassis

1994 DODGE BR1500  
19K, Auto, SLP, Air

Club Cabs In Stock, More Coming  
1/2, 3/4 & 1 ton 4x4.  
Pickup Trucks in Stock  
(8) V-10 & Diesels  
(20) Dakota's in Stock

ASK FOR MILTON HESS  
Certified Truck Specialist  
**717-367-6644**  
**717-653-6667**  
Elizabethtown, PA

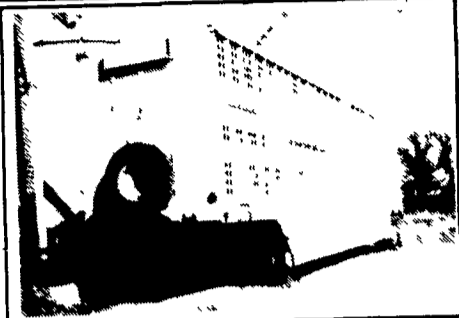
93 Ford F250 4X4 Super-cab 7.3 Diesel, 5Spd., 55,000 Mi., Like New. \$23,500 OBO. 717-532-7261 or 530-8350 Evenings.

'94 Dodge LE 350, 15 passenger, 360 FI, auto, PS, PB, PW, PDL, cruise, tilt, dual air & heat, AM-FM cassette, privacy glass, 21,000 miles w/balance of 7/70 warranty, blue & silver, excellent condition, \$17,900. 717-733-2873

Air slide 5th wheel, \$475. M-F 8-5PM. York Co 717-292-5696.

Asplundh model LR45 bucket truck center mounted on 1979 Ford C8000 CAT 3208 dsl auto (2) hyd outriggers, elect. drive, air brakes, generator no spin rear end, Michelin tires, 39,000 miles on new motor. Excellent condition, \$18,500. (717)287-6301

BATTERIES \$25-\$35. Let us recondition your old battery and save over 50%. We buy old batteries. PowerPro Battery, 1124 Elizabeth Ave., beside Lancaster Stockyard, 717/399-9545.



1976 Merrit 48' Double Deck Pot  
Extra Nice for Yer \$7,000  
Winchester, VA.  
(304) 876-8653 evenings

## (800) 533-3837

### YOUR DIRECT LINE TO GENUINE GM PARTS

When you call the number listed above you'll reach our wholesale parts specialists, who can help you keep your GM repair work moving quickly. Ask About:

- Specializing in GM Medium Duty Trucks, Current and Obsolete.
- \$500,000 Parts Inventory
- Parts Locator For Those Hard To Find Items
- We Ship Anywhere. Local Delivery Available.
- Experienced, Knowledgeable Personnel.

**LEFEVER BROS.**  
DILLSBURG

(717) 432-9697

Quality Dealer Since 1921  
406 U.S. Route 15 • Dillsburg, PA 17019



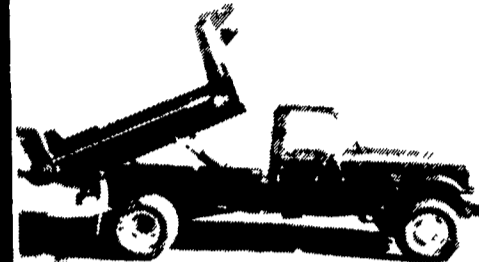
Mr. Goodwrench



1987 GMC General Tractor  
350 Cummins; 13 Speed; Power Steering;  
Reyco Suspension; 42" Sleeper Bunk;  
228" Wheel Base \$14,500.00

Curry Supply Co.  
Curryville, PA  
1-800-345-2829

## DIESEL



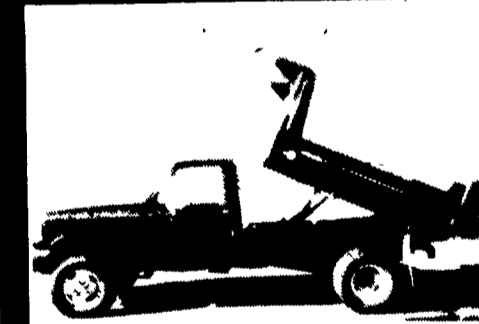
1995 F-350 4X4 THIELE 8' E-LINE CHOR BOY DUMPTRUCKS  
all with Ford's 7.3L Powerstroke turbo diesel, automatic & 5-speed transmission, 2-3 yd. capacity, 11,000 GVW. (2) on the way. **CALL TODAY!**

## DIESEL



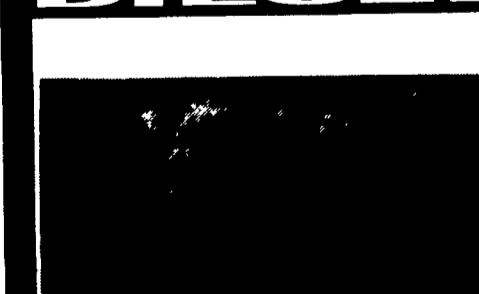
1995 F-450 SUPER DUTY THIELE 8' AND 10' E-LINE CHORBOY DUMPTRUCKS  
all with Ford's 7.3L Power Stroke turbo diesel, 5-speed transmission, 3-4 yd. capacity, 15,000 GVW (3) IN STOCK

## DIESEL



1995 F-450 SUPER DUTY 4X4  
10 Ft. Dump, 7.3 Liter, Power Stroke Turbo Diesel, 5 Speed, Air

## DIESEL



1995 F450 SUPER DUTY STAKE BODY DUMPS  
all with Ford 7.3L Power Stroke Diesel, 12A Stake (4 Coming Soon)

## Huntingdon Equipment

Rentals Available

GOOD USED EQUIPMENT

Huntingdon Valley, PA • 215-672-9667 • 1-800-543-3833 • Eddie

### SPRING SALE DAYS



Vermeer M-470 Trencher with backhoe  
This is one of six units we have all ready to work Starting at \$4,500.



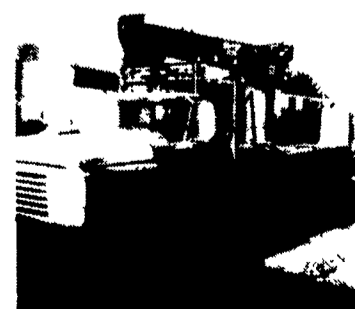
Powers Bucket Truck two man lift with jib working ready



International Presser Digger This Unit is Ready To Work, Sale Price \$6,500



Pitman Boom with jib 15,000 pounds cap - 4 outriggers Sale Price \$8,250.00 Won't Last Call Now!!



Need A Lift? We Have A Large Selection Of Boom Trucks Up To 14,000 lbs Cap. Some With Post Diggers.



Bucket Trucks 28' to 65' Gas and Diesel Call For Details

### DIGGER DERRICKS/AERIAL BUCKETS/UTILITY EQUIPMENT

Ford  
**KELLER BROS.**

RD 7, Box 405, Lebanon, PA, 17042  
717-949-2000  
800-309-FORD