

Westminster Livestock

Hagerstown, Md.

April 4, 1995

Report supplied by auction

SLAUGHTER COWS: 110 HEAD, STEADY TO 1.00 HIGHER. UTILITY 38.00-42.00; HIGH DRESSING 42.50-45.00; CANNERS 33.00-37.50; SHELLY 33.00 DOWN.

BULLS: YG#1 1600-1965 LBS. 2 AT 52.25; YG#2 46.00-49.25.

FED STEERS: 2.00 LOWER. HIGH CHOICE 1050-1350 LBS. 64.00-65.25; LOW CHOICE 61.00-63.25; SELECT 54.00-59.00; HIGH CHOICE HOLSTEINS 1500LBS. 57.25; LOW CHOICE 1100-1400 LBS. 52.00-56.25.

FED HEIFERS: FEW OFFERED. FEW CHOICE 1100-1300 LBS. 60.50-61.25; CHOICE LOW DRESSING 900-1150 LBS. 55.00-58.25.

VEAL CALVES: 100 HEAD. HIGH CHOICE, 1 230 LB. AT 95.00; LOW CHOICE 320LB. AT 76.00; CULLS FEW 70-100 LBS. 50.00-58.00.

FARM CALVES: HOLSTEIN BULLS #1 90-120 LBS. 100.00-126.00; #2 75-90 LBS. 65.00-95.00; HOLSTEIN HEIFERS #1 95-120 LBS. TO 190.00; 75-90 LBS. TO 150.00; BEEF X BULLS TO 130.00; HEIFERS TO 115.00.

BUTCHER HOGS: 60 HEAD, STEADY PRICES. US#1&3 225-260 LBS. 33.75-34.85; 210-225 LBS. 33.00-33.50; FEW 280-310 LBS. 29.00-33.00.

SOWS: 10 HEAD. 300-500 LBS. 23.00-26.50; 500-700 LBS. TO 27.50.

BOARS: 300 LBS. TO 21.00.

STOCK CATTLE: 231 HEAD. STEERS MEDIUM AND LARGE FRAME 200-400 LBS. 69.00-80.00, 1 AT 103.00; 400-600 LBS. 66.00-73.00, FEW 75.00-80.00; 600-800 LBS. 59.00-64.50;

800-1000 LBS. 54.00-59.00.

HEIFERS: 300-500 LBS. 54.00-64.00, FEW 65.00-68.00; 500-700 LBS. 53.00-63.00; 700-800 LBS. 45.00-55.00.

BULLS: 300-500 LBS. 65.00-74.00; 500-700 LBS. 55.00-64.00, FEW TO 70.00; 700-800LBS. 50.00-55.00; 800-900 LBS. 42.00-48.00.

LAMBS: 120 HEAD, GOOD DEMAND. CHOICE 100-120 LBS. 80.00-85.00, FEW 125 LBS. 65.00-69.00; 70-90 LBS. 81.00-95.00; 50-70 LBS. 95.00-103.00; 30-50 LBS. 90.00-103.00, 117.00-120.00; 20-25 LBS. FEW 150.00-210.00, BULK 80.00-95.00.

SHEEP: 20.00-32.00.

GOATS: 54 HEAD. LARGE 60.00-80.00; MEDIUM 35.00-65.00; SMALL FLESHY 30.00-41.00; SMALL 25.00-30.00.

PIGS AND SHOATS: BY THE HEAD FROM TESTED HERDS, 15 HEAD 40-60 LBS. 24.00-31.00.

Leesport Livestock Auction

LEESPORT, PA

April 5, 1995

CATTLE 200... PDA ... Supply included 68 sl. steers & heifers and 34 feeder cattle ..sl. steers steady to 1.00 lower, cows uneven, heifers steady .75 lower sl. bulls .50 to 2.00 lower. STEERS: few Choice 1150/1130 lbs. 62.50-63.25, Select 56.00-62.25 mostly 58.50- 61.00, few Standard 49.25-52.00. HOLSTEINS: few High Choice and Prime 1450/1565 lbs. 61.75-62.50, Choice 1230/1600 lbs. 57.25-60.75, Select 55.00-57.00. HEIFERS: Choice 1120/1400 lbs. 62.00-64.25, few Yield Grade 4 & 5 58.25-59.75, Select 56.75-61.00, few Standard 48.00-54.00. COWS: Breaking Utility and Commercial 40.50-43.25, one 44.75, Cutter and Boning Utility 36.50-41.25, Canner and Low Cut-

ter 34.75-39.00. Shells down to 28.50.

BULLS: Yield Grade No. 1 1230/1780 lbs. 48.00-51.00, one 57.00, No. 2 1105/1495 lbs. 44.50-47.75. FEEDER CATTLE: STEERS: few Large Frame No. 1 465/695 lbs. 66.00-76.00, few Medium Frame No. 1 725/810 lbs. 55.50-58.50, Large Frame No. 2 2335/981 lbs. 45.50-59.00; HEIFERS: few Medium Frame No. 1 370/520 lbs. 54.00-64.00, one 72.00.

CALVES 117...Holstein bulls steady to weak. VEALERS: few Choice 82.50-92.50, couple Good 62.50-77.50, Standard and Good 75/130 lbs. 55.00-63.00, Utility 50/105 lbs. 39.00-48.00. FARM CALVES: No. 1 Holstein bulls 90/120 lbs. 105.00-115.00, No. 2 80/120 lbs. 65.00-90.00; few No. 1 Holstein heifers 85/100 lbs. 140.00-142.50, few No. 2 80/85 lbs. 100.00-135.00. Few beef cross bulls and heifers 80/85 lbs. 87.50-102.50.

HOGS 132...Barrows and gilts steady to 1.00 lower, sows 2.00 to 2.50 lower. BARROWS AND GILTS: US 1-2 225/250 lbs. 35.50-37.25, US 1-3 225/265 lbs. 34.00-35.25, US 2-3 240/275 lbs. 32.00-33.75, one US 1-3 200lbs. 33.00. SOWS: US 1-3 320/750 lbs. 24.00-28.50, Medium 305/465 lbs. 18.00-23.00. BOARS: 200/745 lbs. 18.00-23.00.

FEEDER PIGS 85...US 1-3 45/70 lbs. 40.00-52.00, lot 20 lbs. 87.50. --- per cwt.

SHEEP 391...Slaughter lambs 10.00 to 30.00 higher. SLAUGHTER LAMBS: High Choice and Prime 30/45 lbs. 160.00-190.00, 50/70 lbs. 132.50-155.00, 70/85 lbs. 92.50-102.50, Choice 20/40 lbs. 140.00-175.00, 40/50 lbs. 120.00-160.00, 50/70 lbs. 95.00-125.00, 70/95 lbs. 80.00-90.00. WOOLED LAMBS: Choice 85/95 lbs. 68.00-75.00, 100/175 lbs. 67.50-85.00, Good 25/55 lbs. 80.00-112.50, few 125.00, 60/75 lbs. 67.50-80.00. SLAUGHTER SHEEP: 20.00-45.00, few 15.00, Yearlings

Lancaster Farming, Saturday, April 8, 1995-A7

55.00-64.00.

GOATS 86...Large 47.50-77.50, Medium 35.00-65.00, few Small 25.00-32.50, Large Kids 50.00-67.50, Small Kids 40.00-57.50. --- per head.

New Wilmington Livestock Auction

NEW WILMINGTON, PA

April 3, 1995

CATTLE 194... PDA ...cows 1.50 to 3.00 lower. COWS: Breaking Utility and Commercial 35.00-38.50, Cutter and Boning Utility 32.00-37.50, Canner and Low Cutter 30.00-35.00. Shells down to 25.00. BULLS: one Yield Grade No. 1 1065 lbs. 53.00, No. 2 1050/2400 lbs. 35.00- 41.75. FEEDER CATTLE: STEERS: few Large Frame No. 1 425/650 lbs. 62.00-64.00; HEIFERS: few Large Frame No. 1 300/475 lbs. 56.50-60.00, few Medium Frame No. 1 525/775 lbs. 42.00-50.00, few Large Frame No. 2 450/750 lbs. 50.00-61.00; BULLS: few Large Frame No. 1 425/800 lbs. 56.00-62.00, few Medium Frame No. 1 475/675 lbs. 48.00-64.00.

CALVES 158...VEALERS: Standard and Good 80/120 lbs. 49.00-65.00, Utility 50/75 lbs. 22.00-42.00. FARM CALVES: No. 1 Holstein bulls 120/135 lbs. 90.00-91.00, NM) *b M9 120.00- 124.00, 85/90 lbs. 100.00-111.00, No. 2 90/115 lbs. 70.00-115.00; few No. 1 Holstein heifers 85/110 lbs. 205.00-212.50. Beef cross bulls and heifers 70/150 lbs. 65.00-105.00, one 150.00.

HOGS 278...Barrows and gilts .50 lower. BARROWS AND GILTS: US 1-2 230/260 lbs. 37.35-38.50, US 1-3 220/260 lbs. 34.75- 36.75. SOWS: US 1-3 325/600 lbs. 27.00-34.50, Us 2-3 300/685 lbs. 23.00-31.00, f:w Medium 250/350 lbs. 20.00-21.00. BOARS: few 260/615 lbs. 21.00-21.50.

FEEDER PIGS 36...US 1-3 30/50 lbs. 23.00-34.00. --- per head.

SHEEP 249...SLAUGHTER LAMBS: Choice 75/95 lbs. 89.00-102.50, 40/75 lbs. 110.00- 117.50, 30/40 lbs. 127.50-140.00, Good and Choice 45/70 lbs. 75.00-97.50. OLD CROP LAMBS: Choice 70/100 lbs. 55.00-81.00. SLAUGHTER SHEEP: 13. 00-32.00 mostly 20.00-25.00.

GOATS 13...Few Medium & Large 42.50-57.00, few Small 18.00-30.00, couple Large Kids 26.00 & 33.00. --- per head.

Shenandoah Valley Livestock

Harrisonburg, Va.

April 1, 1995

Report supplied by auction

STEERS: M&L-1 300-500 LBS. 71.00-82.50, 500-700 LBS. 70.00-79.50, 700-1000 LBS. 58.75-64.00, HOLSTEIN 300-1000 LBS. 42.00-71.00.

S-L&M&L-2: 300-500 LBS. 72.00-77.00, 500-700 LBS. 64.00-75.00.

FEEDER BULLS: 300-500 LBS. 72.50-80.00, 500-700 LBS. 60.50-68.00.

HEIFERS: M&L-1 300-500 LBS. 63.00-74.00, 500-700 LBS. 55.75-70.50.

S-L&M&L-2: 300-500 LBS. 57.00-69.00, 500-700 LBS. 52.50-58.75.

STOCK COWS: BEEF WITH CALVES 450.00- 640.00 PAIR; BEEF 330.00-450.00, BABY CALVES 50.00-97.00.

SLAUGHTER COWS: UTILITY AND COMMERCIAL 2-4 34.50-40.25, CANNER AND CUTTERS 1-3 31.50-35.00.

SLAUGHTER BULLS: 45.50-53.00.

LAMBS: BLUE O HIGH CHOICE AND PRIME WOOL 73.50; RED O CHOICE WOOL 68.00-68.50; FEEDER LAMBS CHOICE SPRING 89.00, SLAUGHTER EWES 22.50-27.50.

Keeping Your Corn Safe, Season after Season.



Keeping your corn safe through harvest – season after season – is a big job! That's why successful corn growers throughout the Mid-Atlantic have made Lorsban* 15G insecticide the most widely used corn soil insecticide.

Season after season, Lorsban 15G is the most effective choice for control of rootworms, all species of cutworm, and a broad spectrum of other corn pests. And Lorsban 15G is ideal in all tillage conditions – conventional, minimum or no-till.

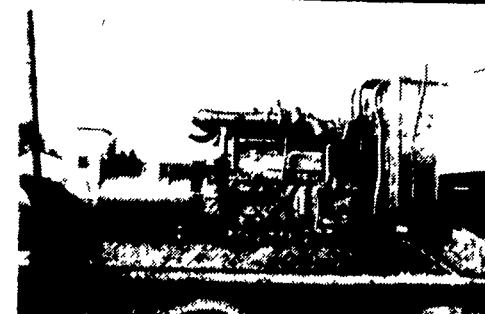
For dependable proven performance, season after season, the right choice remains Lorsban 15G!



*Trademark of DowElanco

The Right Choice for All the Right Reasons

Read the label carefully. Always read and follow all label directions and precautions.



GENERATORS

Sales ★ Service ★ Rentals
★ Complete Generator Systems
★ PTO ★ Portables ★ 2-1600 KW
"We Service It If You Have It
And Sell It If You Need It"

34 W. Mohler Church Rd.
Ephrata, PA 17522

Tel: 717-738-0300
Fax: 717-738-4329



GRAIN DIVISION
**BUYING AND SELLING
SOFT RED AND WHITE
WHEAT**

Picked Up and Delivered Bids Available
Prices Quoted for Spot or Future Delivery
Prompt Payment

**ASK FOR
BILL KRUEGER
(800) 487-1474
WE WANT TO BUY
YOUR WHEAT**