

# SMC 64Q LOADER

## QUICK ATTACH

For 10 to 20 HP Tractors



- 80% Of Loader Removed From Tractor When Detached
- Durability for Most Moving and Lifting Jobs
- Neutral Charcoal Color
- Styling Stripes Matched to Tractor Color
- No Loose Parking Stands Required
- 'Q' Means Quick Attach & Detach



SMC's 64Q Quick Tach Loader is computer-designed to match tractors in the 10 to 20 HP range. Its unique design allows for installing most belly-mount mowers along with the loader. It's an efficient design too. 80% of the loader can be easily removed in less than five minutes, without the use of loose parking stands. Rugged, dependable, yet economical, the 64Q is specifically designed and built for your tractor, and your toughest jobs.

SMC CORPORATION

# Walco Finishing Mower

- DESIGNED TO GIVE YOUR LAWN A PROFESSIONAL CUT
- FOUR WHEELS FOLLOW THE CONTOURS OF YOUR LAWN
- FREE FLOATING HITCH ALLOWS MOWER TO FLOAT
- FRONT MOUNT ROLLER PREVENTS SCALPING



AVAILABLE IN  
48", 60", 72"  
WIDTHS

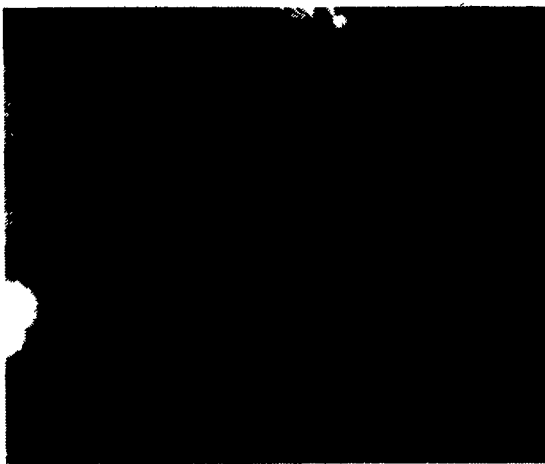


# PARMITER

The inventor of flexible harrows

## Flexible Harrows

### ATLAS



Flexible Harrows  
Offer Versatile  
Designs  
To Match Your  
Specific Needs:

- Ring maintenance for smooth, well prepared traction
- Pasture renovation, by breaking up and leveling heavy soil
- Root aeration, for better water infiltration and growth
- Covers broadcasting seed for effective incorporation
- Works in fertilizer to both spread and maximize effectiveness
- Herbicide incorporation as it levels the ground and seals herbicide in for maximum killing action
- Scarifies hay and pasture land to stimulate new growth as it loosens crusted surface to allow better moisture penetration
- Self-cleaning action spreads straw and heavy residue without plugging the tines
- Saves time and fuel as the harrow can be pulled behind tractors, jeeps, pickups, ATV, 4-wheelers, etc.
- Eliminates crusting, breaks up clods and smoothes cultivated ground

## Tough tillage conditions have met their MAX



**Terra-Max penetrates deep and saves residue.**

The double-shank Terra-Max II and the single-shank Terra-Max I fracture even the hardest soil for compaction-fighting aeration, maximum root penetration, moisture permeation, and seedbed preparation. Residue remains virtually intact to minimize water and wind erosion.

Adjustable, 20" spring-loaded coulters slice the residue.



Above: Double shank rows on Terra-Max II mean maximum soil conditioning

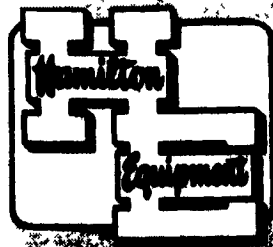
Terra-Max I works with lower horsepower requirements

Next, Worksaver's unique heat-treated steel, helical shanks shatter hardpan as deep as 20".

Finally, an optional roller/conditioner breaks up clumps, works residue into the ground, and levels the seedbed. Secondary tillage usually is unnecessary.

Individual shank rows adjust to popular row widths. One person can easily adjust the gauges to regulate the working depth.

Call today. See why Terra-Max is a Worksaver.



For Your Nearest Dealer Please Contact  
**HAMILTON EQUIPMENT, Inc.**

WHOLESALE DISTRIBUTORS

P.O. Box 478, EPHRATA, PA 17522 PHONE 717-733-7951