

Beef Quality Meetings

(Continued from Page A21)

and pharmaceutical representatives added to the presentation.

The second session of the certification was held at Herr Angus Farm in Nottingham. At this session, test scores from the first

meeting were reviewed, questions answered, and the hands-on portion of the training was implemented. All participants were required to restrain a steer correctly, give a vaccine subcutaneously and intramuscularly, implant a growth



John McFadden, sales representative for Hoechst-Roussel Agri-Vet Company, far left, explains proper procedures in a successful Beef Quality Assurance program to workshop participants.



Properly filling a syringe is demonstrated by Adam Cowart.

stimulant properly, worm with a drench and a pour-on product, as well as identify the animal correctly by giving the steer an ear tag and filling out a vaccination chart. Once each participant completed both training sessions, each individual received a certificate from the Pennsylvania Cattle-men's Association.

Chet Hughes stated that this was his first Beef Quality Assur-

ance training certification program and everything went along smoothly. Many producers that attended were appreciative of the program.

A large number of producers in the association have jobs outside of farming; therefore, this training tool was a valuable learning experience for everyone involved.

Dairy Council Receives KUDOS

SOUTHAMPTON (Bucks Co.)—The Southampton-based Dairy Council Inc. recently took home two awards at the 1994 KUDOS Awards Ceremony, a statewide communication competition sponsored by the Communications Committee of the Pennsylvania Society of Association Executives (PaSAE).

Dairy Council won top trophy for their media campaign involving the importance of the school breakfast program. Combining the efforts of two area school districts, the campaign included a media tour highlighting the importance of school breakfast and how breakfast affects a child's ability to learn in the classroom.

Dairy Council received a second award for their 1993 Annual

Report, which won top prize as best association/business annual report. Entries were judged on content, organization, effectiveness, writing, design, layout, photography, illustration and success in meeting the stated objectives.

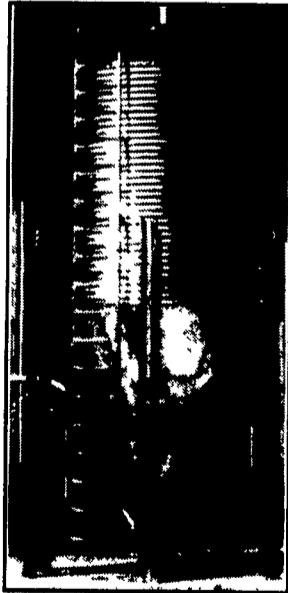
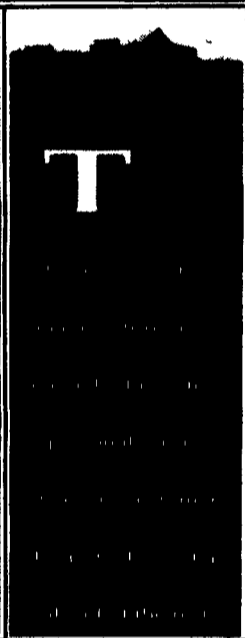
Dairy Council's Executive Director Jan Stanton accepted the awards at the KUDOS awards ceremony in Harrisburg. The KUDOS awards program brings annual recognition to the best publications and public relations works.

KUDOS are judged on effective and creative use of press releases, special events and other media-directed activities in communicating the purpose of the campaign.

EMHERR

GRAIN BIN SPECIALISTS

Serving Your Grain Equipment, Parts And Service Needs For Over 30 Years

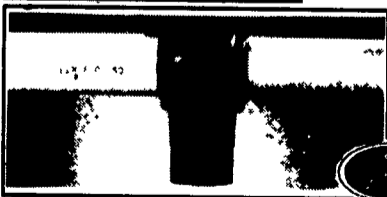


GSI

FEED BINS



- 2 Ton To 165 Ton Capacities
- Rigid Auger Systems 4", 6" And 8"
- Flex Auger Systems In 2", 3", 3 1/2" And 5" Also Available



CALL US FOR YOUR REPAIR PARTS:

- Grain Dryer Parts
- Auger Parts
- Pulleys
- Bearings
- Roller Chain
- Motors

★Full Line Parts Dept.★
★Sell, Service & Install★

Rt. 272 South
14 Herrville Road
Willow Street, PA 17584

Ph. 717-464-3321 or
Toll Free 800-732-0053

Store Hours:
Mon.-Sat. 7:30 AM to 6:00 PM



UPS
Shipping Point



Designed from the beginning for 4WD performance.

When building a 2WD tractor, there's little reason to conserve weight. In fact, you may well end up adding weight for traction.

With 4WD tractors, you really don't need, or even want so much weight. It just makes the tractor less maneuverable, hurts performance, lowers efficiency and increases soil compaction.

MF 300 Series 4WD tractors are engineered with just the right weight, balance and strength for optimum 4WD performance. This means easy handling, with all the performance of bigger, more expensive tractors.

Smart engineering is just one of the many reasons why, over the last 28 years, more people have selected Massey Ferguson tractors than any other brand. Check out all the reasons today at your MF dealer.



Wheels don't lean on full lock, reducing soil damage and tire wear.



Standard hydrostatic steering for fast, easy turns and precise handling.

Low-rate MF financing for qualified buyers makes ownership easy.

Hydralock front-wheel differential engages automatically with rear differential lock.

50° turning angle means less "jockeying" in tight quarters, and shorter headlands.

2WD MODELS	HP	OPTIONS	2WD MODELS	HP	OPTIONS
MF 399	95	2WD, cab, wide row crop, low profile	MF 383	73	2WD, cab, wide row crop
MF 396	88	2WD, cab	MF 375	60	2WD, cab, low profile
MF 393	83	2WD cab	MF 362	55	2WD low profile
MF 390T	80	2WD, cab, low profile	MF 360	50	2WD, low profile
MF 390	70	2WD, cab, low profile			*Manufacturer's estimated PTO horsepower

Massey Ferguson® is a wholly owned Subsidiary of AGCO Corporation, Duluth, GA

SEE YOUR NEAREST DEALER FOR DETAILS

ECKROTH BROS. FARM EQUIPMENT
RD #2, Box 24A
New Ringgold, PA 17960
(717) 943-2131

6 Flicksville Rd.
Bangor, PA 18013
(610) 686-5922

307 Edgar Ave.
Bloomsburg, PA 17815
(717) 784-5217

LEBANON VALLEY IMPLEMENT CO.
700 E. Linden St.
Richland, PA 17087
(717) 866-7518

M.M. WEAVER & SON
N. Groffdale Rd.
Leola, PA 17540
(717) 656-2321

MEYERS IMPLEMENTS, INC.
400 North Antrim Way
Greencastle, PA 17225
(717) 897-2176

SCHREFFLER EQUIPMENT
Pitman, PA 17964
(717) 648-1120

S.G. LEWIS AND SON
West Grove, PA 19380
(610) 859-9440
869-2214

PEOPLE'S SALES & SERVICE
Oakland Mills, PA 17076
(717) 463-2735

TEST DRIVE ONE TODAY!



MASSEY FERGUSON