

Eighth Annual ANTIQUE ENGINE & MACHINERY DAYS
Sat., April 22nd and Sun., April 23rd, 1995

8 AM thru 4 PM each day
NEW LOCATION
Twin Bridge Show Grounds Chambersburg, Pa
5 mi. W. on Rte. 30,
2 mi. N. on
Twin Bridge Rd.

FREE Admission • Engine & Machinery Display • Special Flea Market Items • Tools • Engines • Tractors • Equipment • Parts • Literature • Signs • Farm Toys • Pedal Tractors

• Antique Flea Market and Yard Sale • Lawn and Garden Expo • Dealer Displays • Daily Parades, Pedal Tractor Pulls
Chicken Barbecue served both days

BUY • SELL • TRADE • EAT

Sponsored by
The Cumberland Valley Antique Engine & Machinery Association
J.S. Stratton, 2390 Woodstock Road, Chambersburg, PA 17201
For information call: 263-5588 or 263-8371

ARCADE EQUIPMENT AUCTION

SAT., APRIL 22, 11:00 A.M.
1006 Franklin Street, Watkins Glen, New York

All purchased new 1994 including:
Eight (8) "Super Collider" electric fiberglass bumper cars, Five (5) Star MFG "Beat the Pro" indoor golf games, Two (2) Lite A Line double units, "Spin to Win", Rock N' Bowl Three (3) Skee Ball, "Clown Around"; Imagination Leisure Air Hockey Table, 1991 Kalmar P-50 1 p forklift, pneumatic tires, 3800 lb., 16 ft lift, tilt and sideshift, 624 hours, 1902 Studebaker h d wagon in show quality condition!
OPEN HOUSE with Legal NYS Wine Testing Sat., April 15, 10:00 A.M. to 5:00 P.M.
Terms: CASH or honorable check day of auction! Acceptable I.D. Required!

OWNED BY MR. DAVID MILES
607-243-8602

Auction Conducted By
James P. Pirrung
PIRRUNG AUCTIONEERS, INC.
Wayland, New York
716-728-2520

Dairy and Livestock Sales

Public Auction Register

Closing Date Monday 5:00 P.M.
of each week's publication

TUES. SEPT. 12 - 8PM
Feeder Cattle Sale, Carlisle Livestock Market, Inc., Exit 12 off I-81 turn South - then left onto Alexander Spring Rd. 249-4511.

FRI. SEPT. 15 - 7 PM Horse Sale, New Holland Sales Stables, Inc, 101 W. Fulton St., New Holland, Pa.

TUES. SEPT. 19 - 9AM
Quilt, craft & buggies. A&C Diefenbach Auction, Inc 100 W. Jackson St., New Holland, Pa.

WED. SEPT. 20 - 9AM
Quilt & Craft. A&C Diefenbach Auction, Inc. 100 W. Jackson St., New Holland, Pa.

WED. SEPT. 20 & THURS.

SEPT. 21 - Large Two Day Sale of Farm Equipment, Etc. Located 6 Miles South Of Chambersburg, Pa. One Mile East of Marion along Rt. 914, 1/4 East Off Rte. 81, Exit 4. Owners, Jerrold & Gloria Oaks Marion Auction Service.

FRI. SEPT. 22 - 1:30PM
State Graded Feeder Pig Sales Carlisle Livestock Market, Inc., Exit 12 off I-81 turn South then left onto Alexander Spring Rd., 249-4511

SAT. SEPT. 23 - Mel's Stables, at 834 Wallace Rd., New Holland, Pa From Rt 23 in New Holland, go S. on Brimmer Ave., go 2 miles S. on New Holland Rd. to Hill Rd. Turn left on Hill Rd. Proceed 1 1/2 miles to sale on left. From Rt. 340 E of Intercourse take New Holland Rd. 2 1/2 miles to Hill Rd., right on Hill Rd. at sale on left Mel Hoover, owner

SAT. SEPT. 23 - 10AM
Heifer Sale Reg. & Grade New Holland Sales Stables, Inc., 101 W. Fulton St., New Holland, Pa

TUES. SEPT. 26 - 8PM
Feeder Cattle Sale Carlisle Livestock Market, Inc., Exit 12 off I-81 turn South - then left onto Alexander Spring Rd. 249-4511.

WED. SEPT. 27 - Caernarvon Cream Of The Crop II, Morgantown, Pa

FRI. SEPT. 29 - 6PM Feeder Cattle Sale, New Holland Sales Stables, Inc., 101 W. Fulton St., New Holland, Pa

SAT. SEPT. 30 - 104 Acre Farm, Farm Machinery, Personal Property. Located 1845 Mill Rd., East Earl, Caernarvon Twp., Lanc Co. From Blue Ball Rt. 23E to Pool Forge Rd Turn Left to Stop Sign to Left onto N. Churchtown Rd. To Mill Rd Turn Left to Farm on Mill Rd. to First Farm. Terms by Noah & Lena Sauder Kline, Kreider, Good Aucts

Public Auction

LEBANON CO. SPRING PROMISE SALE

April 13, 1995 7:30 p.m.

Lebanon Area Fairgrounds Lebanon, PA
42 Registered Calves and Heifers

Selected Especially for 4-H & FFA Projects
Many Mar., Dec., and Sept. Calves sell

32 Holsteins 5 Jerseys 4 Brown Swiss 1 Ayrshire

Holstein Sires: Astre, Royal, Mascot, Supreme, Merrill, Mark Horace, Jed, Elton, Frant
Brown Swiss Sires: Select Man, Progressor, Convincer
Jersey Sires: Duncan Lester, Prince Malcom

**FEATURES
HOLSTEIN**

SEPT. '94 Ambition Holstein from Mor-Dale Curious Pearl
1-11 proj. 17520 620 562
Ralph E. Moyer, Myerstown, PA

Merrill dau born Jan. '95 from a VG 86 Blackstar with 2-4 365 24159 3.3 790 3.4 827 and +34 Protein Next dam a VG Royalty and the third dam Oakenbound W Chief from VG 87 with 5-1 365 29008 4.6 1335 3.1 880.

Oakenbound Holsteins, Richland, PA

3 Exceptional Calves with Terrific Pedigrees from Duane Nolt, Richland

March '95 Astre from Len-Lyn Chief Mark Mia EX 90 2E 5-8 305 25960 4.6 1201 3.2 841 and lifetime of 147,920. Next dam a VG Elevation with over 150,000 lifetime.

Elton with a PTA +49P born Dec. '94 from a VG 87

Wister with 2-0 365 25630 4.0 1022 3.4 867 fresh as a 3 yr. old with 134 lbs. first test. Granddam is EX 90 DOM by Ned Boy with 2-4 365 31940 3.7 1175 3.4 1093

Mountain with +48P born March '95 from Ronice-Acres Nick Star-ET with 2-3 3x 365 25970 3.5 908 3.3 854. Next dam a VG Valiant with over 31,000, third dam VG 88 over 34,000.

Mascot heifer born July '94 from a 2 yr. old dam estimated over 19,000. The next dam 3-0 365 30067 3.7 1106 3.2 969. Also a Browndale Stardust from a Belltone.

Daniel & David Groff, Lebanon, PA

Jed daug. from a Leadman 2 yr. old milking well that has a full sister GP 83 VG MAM. Projected 3-3 over 25,000.

David Brandt, Annville, PA

Cracin Royal born July '94 from a VG Cleitus with 3-5 305 21225 3.6 774 3.5 738. Next dam is Dale-Pride Sexy-Minnie-ET EX 92 2E by Sexation and a record of 5-11 305 24911 3.3 828 3.2 796. Third, Fourth, and Fifth dams are all VG.

Alan Hostetter, Annville, PA

Six Head from Ray Seidel, Kutztown, PA including a yearling Skywalker, 4 Ares daughters, one born Sept. '94 and one Dec. '94 all from exceptional cow families. An Encore from a Task daughter milking well as a 2 yr. old.

Sept. Startmore Supreme from an Astronaut with over 25,000. Next 6 dams all VG or EX and over 20,000 milk.

Dennis Kauffman, Lebanon, PA

March '95 Merrill from a Pabst with lifetime of 250,350 4.3 10646. The next dam by Ivanhoe Star with a lifetime of 130,350 4.1 5336 and the third dam by Chief with 125,420 4.3 5410.

Leader from a 30,000 lb. Trifecta born Aug. '94. A yearling Jed from a Tradition with 4-4 365 29810 4.1 1213 3.4 1013. March '95 Southwind from a Chairman with 2-8 345 28151 3.6 1008 3.5 989.

Raymond Getz, Myerstown, PA

BROWN SWISS

March 1, '95 Top Acres Progressor from a VG dam with over 120,000. Next dam 2E with 8-5 365 21340 4.1 878 3.5 747.

Dublin Hills Farm, Woodsboro, MD

March '95 Ensign from a GP 83 dam with 3-6 365 21440 4.4 935 3.4 775. Granddam a lifetime of 182,000.

Gary Mase, Lebanon, PA

ARYSHIRE

March '94 Palmyra Luv's Regal dau that was 1st Jr. Calf at the Kutztown Fair and Reading Fair '94.

Andrea Koinski, Mohrsville, PA

JERSEY

March '95 Bold Venture from a dam with 1-10 353 13879 4.9 686 3.8 528.

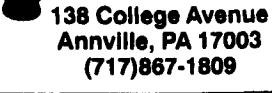
Jessica Haag, Mohrsville, PA

Aug. '94 Duncan Lester daughter from Wal-Twil Vallant Tip-Top Theresa 1-6 293 1030 413 342.

Darin Nolt, Richland, PA

Sponsored by Lebanon Area Fair Dairy Committee
Lebanon Co. Holstein Club

For Catalogs, contact Dale L. Hoover



Pedigrees:
Dale L. Hoover
517 Horseshoe Pike
Lebanon, Pa 17042
717-867-2489

MASON-DIXON INVITES YOU TO JOIN US AT THE ROCKINGHAM COUNTY FAIRGROUNDS HARRISONBURG, VA

APRIL 21-23, 1995
FOR THE 6TH ANNUAL



Be There at 2:00 PM Friday, April 21 For The All-Female

RED ANGUS ROUNDUP SALE

(Bulls available in private treaty sale pens.)

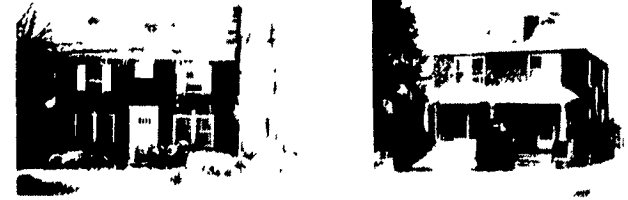
Write or call for catalogs:
Mason-Dixon Red Angus Assoc.
Rt. 3 Box 1728
Boones Mill, VA 24065
1-800-961-1616

Important PUBLIC AUCTION

of
2 VALUABLE REAL ESTATE PROPERTIES
Antiques, Household Goods, Furniture, Shop Tools,
1849 Framed Sampler, Old Post Cards, Watches,
Toys, CI Pcs, Snow Blower, Riding Mower

Saturday, April 29, 1995 • 9 AM

Coins: 9 AM Real Estate: 2 PM



1647 & 1651 Old Philadelphia Pike, Lancaster, East Lampeter Twp, PA. Dir: Just east of Lanc. on Rt. 340 or from Rt. 30 bypass, take Rt. 340 West approx. 1 mile.
REAL ESTATE

Partial #1
2 1/2 Story Brck Dwelling w/Attached 1 Car Garage (Auto Opener) situated on a nice lot 72 x170' m/l
First Floor: Lg Living Room w/Open Staircase & Working Fireplace Dining Room w/Bay Window Kitchen w/Modern Cupboards & Elec Stove Powder Room
Second Floor: 4 Bedrooms (1 w/Built-in Cabinets - Desks - Sink) Full Bath w/Linoleum Oak Tongue & Groove Hardwood Floors Throughout Carpet Closets Attic Storage Area Basement Gas Stove & Sink Hook-up, Elec Furnace w/Hot Water & Built-in CI Radiators

Partial #2
2 1/2 Story Brck Dwelling w/Separate 2 Car Brck Garage situated on a nice lot 165'x225' m/l
First Floor: Lg Living Room, Glass Doors to Dining Room w/Corner Cupboard Kitchen w/Chestnut Cabinets & Linoleum Floor, Laundry Room w/Powder Room
Second Floor: 3 Bedrooms, Full Bath
Attic Nice Bedroom w/Dormer Window & Storage Area Hardwood Floor Concrete Basement w/Outside Entrance Closets Throughout Chestnut Wood Throughout, Storm Windows & Doors, Elec Baseboard Heat,
Public Water & Sewer on both properties ZONED COMMERCIAL

Dwellings will be offered separate & together Properties are well built and in excellent condition

OPEN HOUSE: Thursday, April 13, 6-8 pm; Sat., April 22, 1-3 pm; or call (717) 687-6857.

TERMS: 10% down, balance on or before June 30, 1995.
ATTORNEY: J. Elvin Kraybill
Gibbie, Kraybill & Hess
Sale For: **Landis E. & Ruth M. Hershey**
MILLER & SIEGRIST AUCTIONEERS
(717)687-6857 • AU-1723L