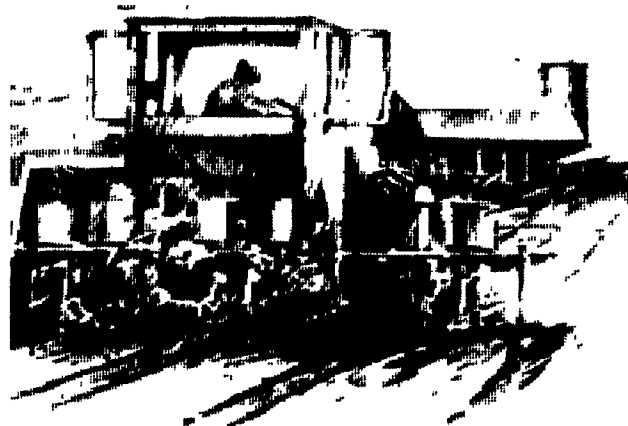


GOODYEAR

#1 in Tires

SPRING FARM TIRE VALUES!



18.4R38 TL 1*
\$579⁰⁰
 Other Sizes Available

11.2-28 4 Ply
\$189⁰⁰
 Other Sizes Available

DYNA TORQUE RADIAL

DYNA TORQUE II

Save On Tough, Hard-Pulling Tractor Rears

- Revolutionary 3 lug/pitch design improves traction and ride
- Computer designed "natural" shape casing improves body life
- Radial construction provides better traction, lower fuel and overall cost

High Traction efficiency, Long Tire Wear

- Excellent drawbar pull with long-bar, short-bar lugs for improved traction
- Designed for improved stability and roadability, plus reduced vibration
- Strong angle-braced lugs have self-cleaning design

GOODYEAR

#1 in Tires

MONTHLY MAINTENANCE

TIP



When working back and forth on the side of a hill, the rear tractor tires will alternately be on the down side. It is recommended that the inflation pressure in both rear tires be increased by 4 PSI under such conditions. When one tire is continuously operated in the down slope position, it is only necessary to increase the inflation pressure in that tire.

\$79⁰⁰
 95L 15.6 Ply

18.4R38 TL 1*	579 ⁰⁰
11.2-28 4 Ply	189 ⁰⁰
95L 15.6 Ply	79 ⁰⁰
11L15 8 Ply TT	74 ⁰⁰

FOUR RIB

\$79⁰⁰
 11L15 8 Ply TT

18.4R42	719 ⁰⁰
500-15 4 Ply	39 ⁰⁰
11.2-28 4 Ply	189 ⁰⁰
11L15 8 Ply TT	74 ⁰⁰

FARM UTILITY TIRE

Save On Tractor Fronts

- Uniform pressure distribution for on-road mobility important on higher horsepower tractors
- Positive steering • Bruise resistant nylon cord

Strong, Long Wearing

- High flotation • Heavy load capacity
- Rugged 3-T cord body

\$39⁰⁰
 500-15 4 Ply

SIZE	PLY	PRICE
18.4R42	1*	719 ⁰⁰
500-15	4	39 ⁰⁰
11.2-28	4	189 ⁰⁰
11L15	8	74 ⁰⁰

TRIPLE RIB R/S

Dependable Front Tractor Tire

- Wide shoulder ribs, rugged rim shield, durable 3-T nylon cord body
- Excellent steering stability
- For general purpose farm use

America's Powerful New Hybrid

- Better traction, longer wear and better fuel economy than our best bias ply
- Open shoulders and high element lug angles for better wet traction without clogging
- Patented interlocking center lug tread design for reduced vibration
- Longer footprint for less soil compaction



Economy All Season LIGHT TRUCK RADIALS

LT235/75R15-C	\$94	OWL
31-1050R15-B	\$113	OWL
LT215/85R16-D	\$115	BSL
LT225/75R16-D	\$118	BSL
LT235/85R16-E	\$125	BSL

OWL = Outline White Letter.
 BSL = Black Serrated Letter.

Shueys Sales & Service Jonestown Road Ono, PA 717-865-4915	Dices Tire Shop 1421 Lincoln Way Chambersburg, PA 717-264-9312	Zimmerman Farm Service School Rd. Bethel, PA 717-933-4114	Bastian Tire Sales R2603 Reach Road Williamsport, PA 17701 717-323-8651
Lebanon Valley Imp. Co. 700 E. Linden St. Richland, PA 717-866-7518	Bastian Tire Sales Rt. 11 & 15 Shamokin Dam, PA 717-743-1571	BHM Farm Equipment RD 1 Rt. 934 North Annville, PA 717-867-2211	Horlacher & Sherwood 153 E. Tioga Tunkhannock, PA 717-836-1116

THE BEST TIRES IN THE WORLD HAVE GOODYEAR WRITTEN ALL OVER THEM