

North Virginia

WARRENTON, VA
MARCH 30, 1995

SOUTHSIDE (BLACKSTONE) ON
29-MAR-95 PRICES BASED ON IN
WEIGHTS

SLAUGHTER CATTLE 59
SLAUGHTER COWS 52 HEAD
COWS BREAKING UTILITY & COM-
MERCIAL 2-4 31.50-34.00 HD
35.00-38.00 CUTTER & BONING UTI-
LITY 1-3 30.00-34.00 CANNER & LOW
CUTTER 1-2 20.00-29.25
SLAUGHTER BULLS 7 HEAD
BULLS Y.G. 1-2 900-1300 LBS
43.00-44.00 Y.G. 1-2 1300-1600 LBS
41.75 Y.G. 1-2 1600 LBS & OVER

43.50-46.50

GOATS 42 HEAD
BILLIES - MEDIUM 56.00-60.00
SMALL 31.00-36.00 NANNIES -
MEDIUM 31.00-41.00 SMALL
25.00-27.00 KIDS - 16.00-33.00
FEEDER CATTLE 257 HEAD
STEERS 57 HEAD MEDIUM 1 MED
& LGE 1 SMALL 1 MED & LGE 2
300-400 - 75.00-81.50 - 71.00-74.50
400-500 - 71.00-75.50 65.00-67.50
69.50-76.50 500-600 - 66.00-72.50
60.00-61.50 61.00-68.00 600-700 -
58.50-72.50 - -
HOLSTEIN 12 HEAD STEERS MED
& LGE 2 400-500 45.50-50.75 500-600
47.50-49.25

HEIFERS 114 HEAD MEDIUM 1
MED & LGE 1 SMALL 1 MED & LGE 2
200-300 - 65.00-70.00 300-400 -
60.50-66.00 53.50-54.50 55.00-62.00
400-500 - 58.50-69.50 52.50-58.50
57.00-65.50 500-600 - 57.00-64.00
50.00-57.00 57.00-59.50 600-700 -
55.50-58.00 - 54.50-55.50
BULLS 74 HEAD MEDIUM 1 MED &
LGE 1 SMALL 1 MED & LGE 2 200-300
- 77.50-78.50 68.50-71.00 - 300-400 -
72.50-78.00 62.50-72.50 - 400-500 -
68.50-73.50 54.00-67.50 69.50-74.00
500-600 - - 57.50-62.50
COWS WITH CALVES AT SIDE 12
PAIR - M & L 1-2, 6-10 YEARS OLD
900-1300 LBS WITH CALVES 95-200
LBS \$330.00-550.00 PER PAIR. BABY
CALVES RETURNED TO FARM 6
HEAD NEWBORN TO 4 WEEKS OLD
\$22.00-30.00 1 AT \$82.50 PER HEAD.
DC ORANGE, VIRGINIA ON
29-MAR-95 PRICES BASED ON IN
WEIGHTS SLAUGHTER HOGS 20
HEAD BARROWS & GILTS US 1-3
200-250 LBS 32.50
SLAUGHTER CATTLE 87 HEAD
SLAUGHTER COWS 80 HEAD
COWS CUTTER & BONING UTILITY
1-3 34.00-41.50 HD 38.00-41.50 CAN-
NER & LOW CUTTER 1-2 31.50-37.50

Lancaster Farming, Saturday, April 1, 1995-A9

SLAUGHTER BULLS 7 HEAD BULLS
Y.G. 1-2 900-1300 LBS 44.00-53.00 Y.G.
1-2 1600 LBS & OVER 46.25-48.00
FEEDER CATTLE 292 HEAD
STEERS 95 HEAD MEDIUM 1 MED
& LGE 1 SMALL 1 MED & LGE 2
300-400 76.00-86.00 - 59.00-63.00 -
400-500 77.00-79.00 - 62.00-63.00
67.00-73.00 500-600 - 66.00-62.50-64.00 -
600-700 59.00-65.50 65.00 - - 700-800 - -
- 800-900 52.00-54.50 - - -
HEIFERS 116 HEAD MEDIUM 1
MED & LGE 1 SMALL 1 MED & LGE 2
300-400 61.00-64.00 - - 55.00-63.00
400-500 61.50-69.00 - 52.00-58.00 62.00
500-600 55.50-60.00 59.50-65.50
50.00-54.50 52.00 600-700 50.00-52.00
58.00-59.50 - - 700-800 - - - 60.00
BULLS 81 HEAD MEDIUM 1 MED &
LGE 1 SMALL 1 MED & LGE 2 300-400
70.00-77.00 - - 400-500 70.00-73.00
74.00 63.00-66.00 - 500-600 65.00
65.00-67.00 53.00-60.00 - 600-700 -
61.50-65.00 - -
COWS RETURNED TO FARM 1
HEAD - M&L 1, 4-10 YEARS OLD
900-1100 LBS \$380.00-460.00/HEAD.
COWS WITH CALVES AT SIDE 12
PAIR - M&L 1, 4-10 YEARS OLD,
900-1100 LBS WITH CALVES NEW-
BORN TO 200 LBS \$470.00-580.00 PER
PAIR. BABY CALVES RETURNED TO
FARM 15 HEAD NEWBORN TO 4
WEEKS \$32.50-77.50 PER HEAD, 100+
LBS \$90.00-102.50 PER CWT.
A SERVICE OF VIRGINIA DEPART-
MENT OF AGRICULTURE & CON-
SUMER SERVICES MARKET NEWS
OFFICE IN COOPERATION WITH
USDA. 703/347-6380.

HIGHER. 85-110 LBS. 56.00-68.00, 50-80
LBS. 50.00-64.00; WEAK/ROUGH 45.00
DOWN.
FARM CALVES: GOOD DEMAND
FOR ALL TYPES. HOLSTEIN BULLS #1
90-120 LBS. 105.00-125.00, #2 80-90
LBS. 75.00-105.00; HOLSTEIN HEIFERS
#1 90-120 LBS. 180.00-225.00, #2 75-95
LBS. 140.00-182.00; HEIFERS, LIGHT-
WEIGHTS TO 100.00; BEEF X BULLS
95.00-137.00.
STOCK CATTLE: STEERS, NO
LIGHTWEIGHTS; FEW DAIRY X;
800-950 LBS. 48.00-50.00.
HEIFERS: 350-500 LBS. FEW TO
55.00; 1 HOLSTEIN SPRINGER AT
88.50.
BULLS: SMALL FRAME 350-500
LBS. 49.00-57.00; 1 750 LB. AT 48.50.
SHEEP: NONE.
GOATS: LARGE 74.00-88.00;
MEDIUM 40.00-60.00; SMALL FLESHY
KIDS 33.00.
PIGS AND SHOATS: NONE.
BUTCHER HOGS: 51 HEAD, 1.00
LOWER. US#1&3 225-260 LBS.
34.00-35.00; 265-271 LBS. 32.00-33.25;
#2&3 250 LBS. TO 33.60; 280 LBS. TO
28.25.
SOWS: 1450 LB. AT 25.50; 2700 LBS
30.00 AND 31.00.
BOARS: 700 LBS. TO 21.00.
HATFIELD QUALITY MEAST...37.00
PLUS BONUS ON QUALITY HOGS.
BUYING STATION HELD EVERY
TUESDAY AT FOUR STATES.

New Holland Horses

New Holland Sales Stables
New Holland, PA

Monday, March 27, 1995

Report Supplied By Auction
289 HEAD. MARKET STRONGER.
WORK HORSES 875.00-1425.00.
DRIVING HORSES 625.00-1435.00.
RIDING HORSES 485.00-925.00.
BETTER RIDING HORSES
1250.00-1710.00.
REGISTERED RIDING
825.00-1750.00, 2 AT 2950.00 AND
3300.00.
KILLERS: 7 HEAD 910.00-1120.00,
HEAVY WEIGHTS 735.00-865.00,
LIGHT WEIGHTS 410.00-650.00.
PONIES 50.00-400.00.
LARGE PONIES 435.00-485.00, 1 AT
575.00.
COLTS: 165-495.00.

Frederick Livestock Auction

Frederick, Md.
March 27, 1995

Report Supplied by Auction

SLAUGHTER COWS: 114 HEAD, 2.00
LOWER. UTILITY 38.00-42.75, HIGH
DRESSING 43.00-44.50, 1 AT 47.00;
CANNERS 33.00-38.00; SHELLY 33.00
DOWN.
BULLS: YG#2 1600-1750 LBS.
47.00-48.50.
FED STEERS: NO BEEF TRYPE;
SELECT HOLSTEINS 1200-1900 LBS.
45.00-48.25.
FED HEIFERS: 1 SELECT HOLSTEIN
1400 LBS. 47.25.
VEAL CALVES: 175 HEAD. CHOICE
1355 LBS. AT 80.00; CULLS 3.00-5.00

Once there were Flies,
Now they are GONE!!



EFFECTIVE FLY CONTROL

The AG-3030 is constructed
of rust proof Aluminum. It
has a large electrocuting grid
that is powered by a high
output industrial transformer.
The AG-3030 will not become
overwhelmed or clog by large fly
populations.

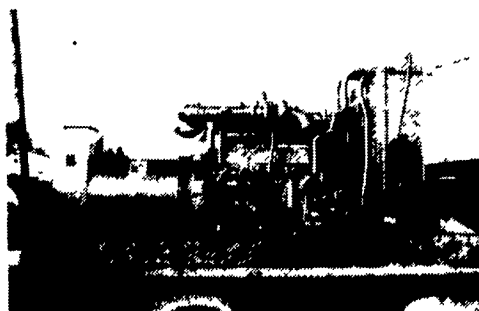
- Gardners AG-3030 makes fly control
easy and effective. This rugged unit
provides safe and sanitary fly control
without harmful chemicals.
- Easy to install—
- Low Maintenance—
- Energy efficient— Uses less than 2 5
amps/unit
- Rapid Return on Investment
- Extensive USDA testing completed at
Maryland EGG facility
- 1 Year Warranty

Dimensions: 56" L x 19" W x 9" H
Shipping Weight: 36 lbs.

HERSHEY
EQUIPMENT CO., INC.

255 Pine Tree Drive
Lancaster, PA 17603
(717) 393-5807
1-800-432-0868

We Take Customer Satisfaction Personally



GENERATORS

Sales ★ Service ★ Rentals
★ Complete Generator Systems
★ PTO ★ Portables ★ 2-1600 KW
"We Service It If You Have It
And Sell It If You Need It"

34 W. Mohler Church Rd.
Ephrata, PA 17522

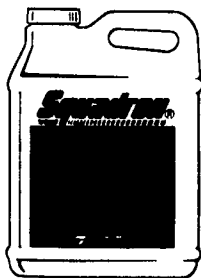
Tel: 717-738-0300
Fax: 717-738-4329

THE SQUADRON LEADER FOR WEED CONTROL IN SOYBEANS

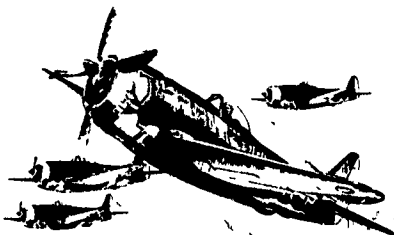
Beyond power and performance, you need
consistency and reliability to get a higher level
of soybean weed control.

And that's what you get with SQUADRON®
herbicide. The power to control black night-
shade, seedling Johnsongrass, pigweeds,
common sunflower, velvetleaf and cocklebur—
over 50 broadleaf weeds and grasses. The
consistency to control them longer. And the reliability to get the job done on
any field—no matter what the soil type or pH.

All without hurting your soybeans. See us soon for SQUADRON.



**A Higher Level
Of Soybean
Weed Control.**



The P-47 Thunderbolt—also called the "Jug."
Proven in combat one of the most rugged,
powerful and reliable fighters ever built.

AgriCenter

dealer
Professionalism • Service • Environmental Responsibility

Always read and follow label directions carefully.
™ Trademark, American Cyanamid Company© 1994.

See the AgriCenter Dealer Nearest You
or for more Information call your Cyanamid Rep.

Eastern Pennsylvania Area:
Mike Fleming
717-687-0661

Western Pennsylvania Area:
Jim O'Bryan
800-687-5042

HAY, STRAW & GRAIN SALE

Every Thursday at 1 p.m.

Auction will continue
all year long

**Vintage Sales
Stables, Inc.**

(Rt. 30, 10 miles east of Lancaster
in Paradise, PA)

For Info. L. Robert Frame, Sr.
(717) 442-4181 business president
(215) 458-8518 home

SANDBLASTING AND SPRAY PAINTING WITH AERIAL LADDER EQUIPMENT



Farm Buildings — Feed Mills
Commercial - Industrial

HENRY K. FISHER & SONS, INC.
667 Hartman Station Road
Lancaster, PA 17601
(717) 393-6530