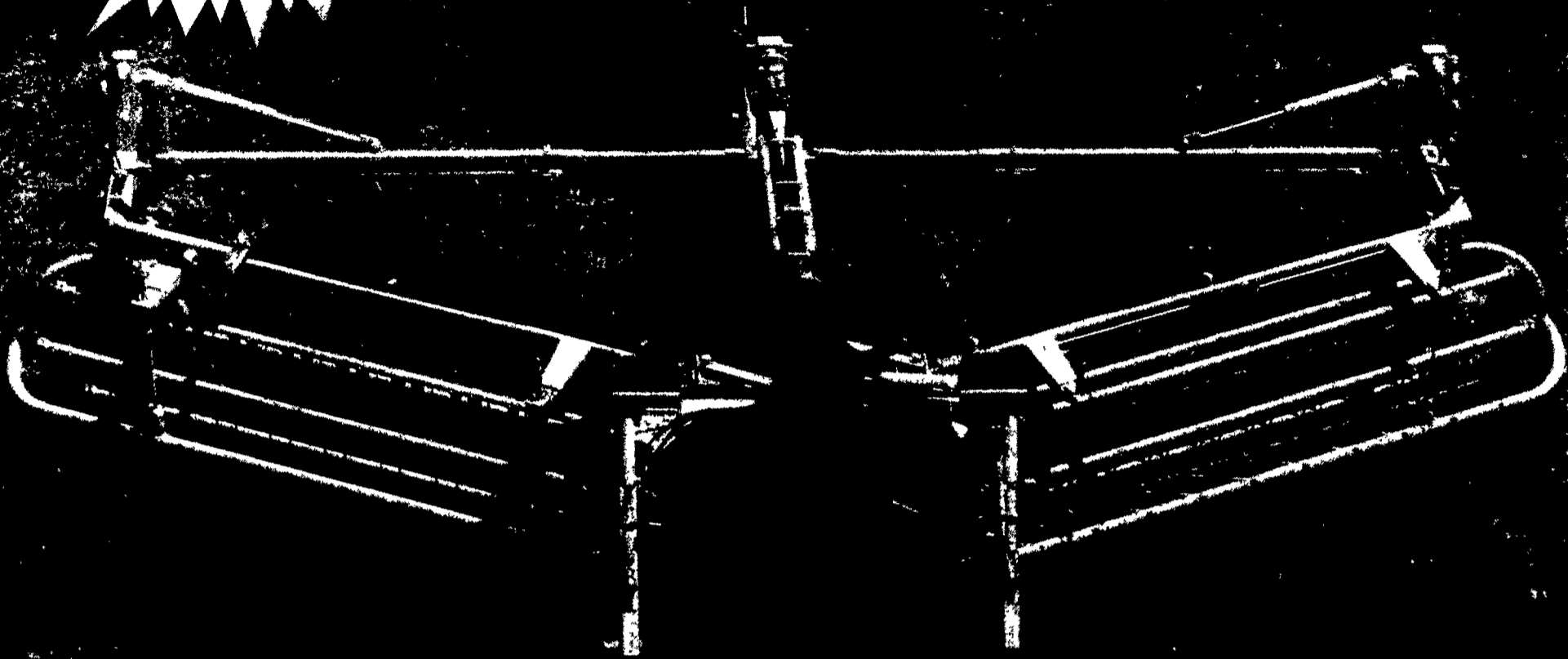


NEW!
R-24 TwinRake
w/hydraulic fold.



R-24 TwinRake

Great Hay Bales Start With Great Windrows!

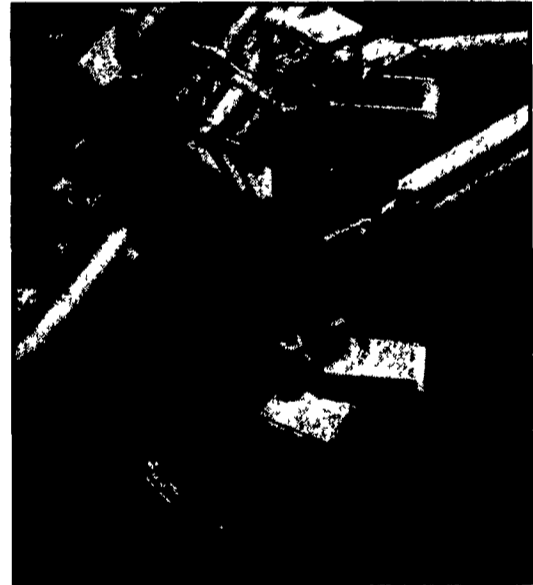
**Vermeer R-23 & R-24 TwinRakes:
 The two hottest hay-raking tools in the field today!**

- **FIT VIRTUALLY ANY HAY HARVESTING SYSTEM**
- **ADJUSTABLE WINDROW WIDTHS (3' TO 6'), DESIGNED TO MATCH YOUR BALER PICKUP**
- **ADJUSTABLE RAKING WIDTHS**
 Sweep 18-24 feet across (R-24) and cut field time by as much as 66% over single rake systems!
- **FINE-TUNED RAKING SPEEDS FOR DIFFERENT CROPS AND FIELD CONDITIONS**
- **MORE POSITIVE RAKING ACTION!
 LOWER REPLACEMENT COSTS!**
 Twin 6-bar baskets with rubber-mounted tines (120 per basket) give you up to 25% more raking action than the conventional steel tines, reduce tine replacement costs. Work great in heavier crops, higher moistures or rough terrain.
- **FULL HYDRAULIC CONTROLS!**
 Raking widths! Windrow widths! Folding/unfolding and lift systems! Controlled from the tractor. Front-folding baskets squeeze thru nearly any farm gate.
- **CAB-MOUNTED R-24 COMMAND CONTROLLER**
 Trigger hydraulic lift/fold, and adjust windrow widths and raking widths, from your tractor seat. Basket speed is controlled thru the other hydraulic circuit and a quiet, smooth-running hydraulic motor mounted on each basket.

New, large caster-type gauge wheels with 27 x 9.5 x 15, 6-ply ribbed tires (on the R-24 TwinRake) help cushion the ride, smooth out turns and maintain rake setting as they negotiate changing contour and terrain. No need to re-set tooth height adjustment after transporting to another field. It's already pre-set with easy-to-adjust cylinder stops.

Rubber-mounted tines.
 More raking action.
 Reduced tine replacement costs. 120 per basket.

Vermeer R-23 TwinRake.
 Quiet! Proven! Reliable!
 Sweeps up 18' to 23' wide.
 Adjustable raking and windrow widths. Adjustable basket speed control. Mechanical fold.



R-23 TwinRake