

Highland Association

(Continued from Page A20)

A directors meeting will be held on April 7 at the host farm, Who's Hill Farm, operated by Dr. and Mrs. Hugh Wilson, in Sunbury.

After the meeting in Lewisburg on Saturday, a tour will be conducted at Who's Hill Farm in Sunbury. Who's Hill Farm is located in the beautiful Susquehanna River Valley of Pennsylvania, an hour north of Harrisburg and 15 minutes from the spring meeting sight.

According to Hugh Wilson, the farm consists of 70 acres of land, with 55 tillable acres. The Highland Cattle, noted for their long coats and telltale horns, will be a feature of the tour.

According to Lynn Wilson, the tour will include a judging contest similar to those at fairs to teach members how to type the animals and what the industry is looking for.

The farm's herd numbers

include 23, with 11 brood cows due this spring. Fencing is electric, some high tensile, and some "homestrung," according to Hugh Wilson. The main herd is wintered outside, never grained (once in the brood cow herd), and all cows must produce a calf yearly. The hay is homegrown and placed into both square and round bales.

Who's Hill Fold of Highland cattle was founded in 1973 after the Wilsons first saw the cattle at the Tunbridge, Vt. "World's Fair". Gradually, after purchasing the original stock, the Wilsons used bull genetics to improve the herd.

By careful selection, the Wilsons have been able to produce a Highlander that routinely and predictably weans at over the American Highland Cattle Association's minimal requirement for weight

gain certification, according to Hugh Wilson.

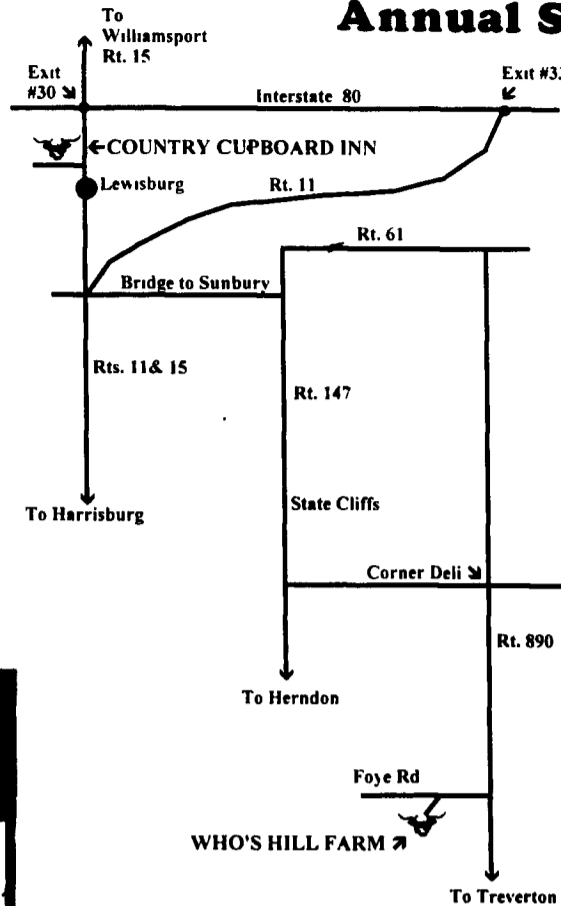
The Wilsons halter-break all the calves. They use a simple home-

built oak gate, oak shoot, and swinging pipe gate for a squeeze. For more information, contact

Lancaster Farming, Saturday, April 1, 1995-A21

Hugh and Lynn Wilson, Who's Hill Farm, RD 3, Sunbury, PA 17801, (717) 286-7952.

Northeast Highland Cattle Association Annual Spring Meeting



Date & Time: April 8, 1995, Registration 9.00 AM

1993 Hosts: Hugh & Lynn Wilson
Who's Hill Farm
RD 3, Sunbury, PA 17801
(717) 286-7952

Location: Best Western Country Cupboard Inn
Route 15 North
Lewisburg, PA 17837
(717) 523-3211

There is a block of rooms at a favorable group rate of \$59.00. Please make your reservations early.

Ticket Price of \$15 each includes Continental Breakfast, Coffee Break & Lunch

Directions from Country Cupboard Inn:

- Rt 15 to bridge to Sunbury
- 147 South off Bridge (right)
- At end of State Cliffs take 1st left at sign to 7 Points
- 1st stop sign turn right on Rt. 890
- Turn right at base of hill on Foye Road
- First driveway on left

LIME

- Dump Truck Loads
- Spreaders Available

Rohrer's Quality Hi-Cal Damp Lime

88% CCE	Calcium Oxide 41%
ENP 67	Magnesium Oxide 6%
55%	passing 100 mesh
65%	passing 60 mesh
98%	passing 20 mesh

NOW ONLY \$5⁵⁰ Per Ton (Picked Up)

Rohrer's Quarry, Inc.

Lititz, PA • (717) 626-9760

★ CRUSHED STONE & READY-MIX CONCRETE ★

Registered with PA Department of Agriculture

AgriPro SEEDS

HS-9843

CONSISTENT YIELDER

- * Tall, attractive hybrid
- * Excellent standability and test weight
- * Season-long plant health and drought tolerance
- * Very good corn borer tolerance
- * Flexible type ear
- * Excellent choice for grain in this maturity
- * Highest yield in BACS Silage Trials in 1994

118 Day Maturity

P.L. ROHRER & BRO., INC.

Smoketown, PA

PH. 717-299-2571

AgriPro® is a Registered Trademark of AGRIPRO SEEDS, INC., P. O. Box 2962, Mission KS 66201

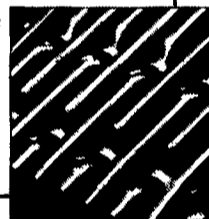
FARMER BOY AG, INC.

FLOORING



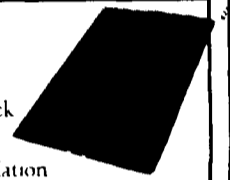
Patented "Double Smooth" design provides superior skid free footing and fewer injuries plus the strength and durability

of the exclusive 1/8" diameter wire make Boss Hog flooring your best buy



Creep Pad
Double Mat 28" x 42"

Pigs stay warm, dry and comfortable on this black rubber creep mat. It absorbs radiant heat while blocking drafts through floors and provides insulation. Soft ribbed surface provides excellent traction for baby pigs.

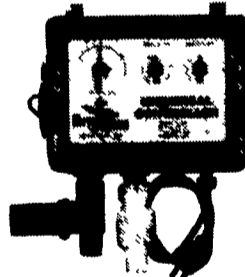


TANDEM PRODUCTS INC.
LIVESTOCK EQUIPMENT
Tenderfoot/NS

This flooring is designed specifically for use in standard nurseries and will accommodate pigs up to 100 lbs. When installed in the outer edges or creep area of the farrowing crate, it provides a soft, warm, bedding-type environment.



WATERING



Universal Controller

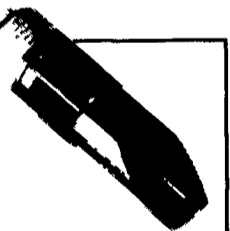
- Simple and automatic control of water flow
- Ideal control for livestock and poultry cooling systems
- Line filter and protective check valve included

UCS04B Droplet Emitter



Edstrom

Nipple Waterers
Available for sow, hog and piglets



MEDICATOR

DOSATRON
LIQUID DISPENSER

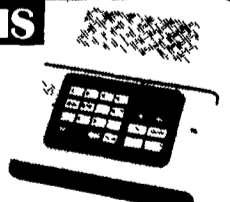
This medicator accurately meters antibiotics, coccidiostats, drugs, disinfectants, sulfas, vaccines, wormers, vitamins, fertilizers or chemical additives into livestock and poultry drinking water or into irrigation systems.



MONITORING SYSTEMS

Sensaphone® 1100
Advanced Desktop Monitoring System

Environmental/Process monitoring over telephone lines with full programming capabilities.



CONDITIONS MONITORED
• Temperature • Humidity • Electricity
• Water Inursion • Smoke • Sound
• Windows & Doors • and More!

ALERT
Up to 4 Dial-out Numbers

Full Line of Parts in Stock For Your Poultry and Hog Needs

Hours: Mon thru Fri 7 - 5
Sat 7:30 - 11:30

24 Hour Service

FARMER BOY AG, INC.

410 East Lincoln Avenue, Myerstown, PA 17067
717-866-7565 • 1-800-845-3374

Check Our Warehouse Prices

Swine & Poultry Systems Specialists

