

10th Annual Spring Auction Teen Challenge Training Center

Saturday, April 8, 1995
9:00 AM

Rehlersburg, PA
Quilts Sold - 12 Noon
717-933-4181

Household Goods

Painting, Basket, Picture Frame, Carpets, Furniture, Pictures, Plants, Picnic Basket, Used Lawn mowers, Afghan, New Outdoor Adirondack Chairs, Quilt Racks, Tile Top Tables, Quilts, etc.

Sporting Goods

Signed Game Balls, Signed Pennants, Auto-graphed Pictures, Tickets, Jerseys, etc.

Gift Certificates

Round-Trip Tickets - Strasburg Railroad, Ryder Truck Rental, Kitchen Kettle Village, Lebanon Lawn and Garden, Shady Maple Smorgasbord, Dutch Wonderland VIP Pass, Restaurants, Athletic Clubs, Photography, Pastry, Grocery, Eye Care, Automotive, Hair Styling, etc.

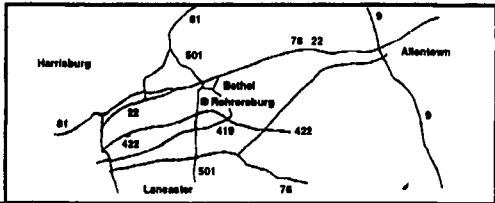
Miscellaneous

Crafts, Quilts, Comforters, Wall Hangings, Crib Quilts, Coo Coo Clock, Tools, Archery Equipment, Picnic Tables, Bird Feeders, Winross Trucks, Paintings, Planter boxes, Wishing Well, lanterns, Phone System, Etc.

Quality Donations Accepted

Call 717-933-4181 ext. 228 for pickup of items

Auctioneer: Darvin J. Rogers, Jr.
All American Auction Service, No. RY-11L
All Sales Final and "As Is"



Public Auction Register

Closing Date Monday 5:00 P.M.
of each week's publication

WED. APR. 19 - 4PM Toys, antiques & collectibles, equip. and tools. Held at Fremont Fire Co. Social Hall, Mt. Pleasant Mills, Pa. Snyder Co. From Harrisburg travel N. on Rt. 11-15. Just N. of Liverpool turn left on Rt. 104 continue to intersection of Rt. 35. At traffic light turn left, proceed 1/2 mile, turn left. Kenneth E. Hassinger, Neil A. Courtney, aucts.

WED. APR. 19 - Port Allegany (McKean Co.) Pa. Dynda Bros. Complete Dis-

persal Holstein herd, machinery, barn equip, produce and brand new 40x90 Quonset building in the box! Pirrung Aucts. Inc.

WED. APR. 19 - 4:30PM Fremont Fire Dept. social hall, (Mt. Pleasant Mills, Pa.) selling lawn equip, 3 wheeler, 100+ quality old toys, antiques and collectibles. Hassinger/Courtney aucts.

WED. APR. 19 & THURS. APR. 20 - Large Two Day Sale of Farm Equipment, Etc. Located 6 Miles South

Of Chambersburg, Pa. One Mile East of Marion along Rt. 914, 1/2 East Off Rte. 81, Exit 4. Owners, Jerrold & Gloria Oaks. Marion Auction Service.

THURS. EVENING APR. 20 - 5:30PM 7 Prime Building Lots, Soil Tests Complete. West Perry Township Snyder County (Heister Valley Rd.) Hassinger/Courtney Auctioneers.

THURS. APR. 20 - 10AM Easter Lamb Sale. New Holland Sales Stables, 101 W. Fulton St., New Holland, Pa.

THURS. APR. 20 - 11AM Pa Dairy Classic Sale. Held at the Ben K. Stoltzfus Farm on Pa. 340 just E. of Intercourse, Pa. Don Welk 717-687-7475 or Dave Rama 607-746-2226.

Lancaster Farming, Saturday, April 1, 1995-E29

THURS. APR. 20 - 4PM Real estate. Loc: take Rt. 322 E. of Hinkletown turn R. onto Railroad Ave at Ephrata National Bank branch. Turn R. onto Linden Grove Rd. to Voganville, turn R. onto Wissler Rd. 322 Wissler Rd. Terms: Joseph M. & Heidi Stauffer. Kline, Kreider & Good aucts.

THURS. APR. 20 - 4PM Brck rancher w/2 car garage, household goods, lawn & garden equip. At 167 Parkview Heights Rd. Eph. Twp. Lanc. Co., Pa. Rt. 322 E. Main St., Ephrata, turn S. on Akron Rd. By Esther Knoep. Horst Aucts.

THURS. APR. 20 - 4:30PM 2 story house & barn on 8.5 acres. From Rt. 322 W of

Honey Brook take Churchtown Rd. S, right on Meadville Rd. to property on left, Salisbury Twp. Lanc. Co. By Wallace S & Carol Ann Post. Homing Farm Agency, Inc

FRI. APR 21 & SAT. 22 - 137 Acre Snyder County Farm, Modern Farm Machinery, Household Furnishings, Antiques, Including Some Lovely Furniture. Selling the Reno S. Walter Estate. Located 1 Mile East of Troxelville, PA at Beaver Springs Turn Off Rt. 522 onto Rt. 235 North 4 Miles to Troxelville and Continue East 1 Mile to Farm or Turn Off Rt. 104 At Penns Creek onto Troxelville Rd. 5 Miles to Farm. Earl W. Eash & Wayne S. Shively Auct.

AUCTION

DAUPHIN CO. CONSERVATION DISTRICT ELEVENTH ANNUAL CONSIGNMENT AUCTION Saturday, April 15, 1995 - 9:00 A.M.

On the Gratz Fairgrounds, (Route 25 - West of Route 81, Exit 35) Dauphin Co., PA

Auction Sponsored for the Benefit of the Dauphin County Agriculture and Natural Resources Center and Scholarship Fund

FARM EQUIPMENT—J.D. 2240 Tractor w/Mechanical Front Wheel Drive w/ 175 J.D. Loader less than 2200 hrs. in Excellent Condition -



Woods P 96 Snowplow for mounting on loader - Farmall Super A w/Plows & Cultivator - we expect several other tractors by day of auction including an Early J.D. model B for parts - J.D. model 30 Two Row Level Bed Potato Digger w/Steering - N.H. 273 Baler w/Thrower - IH model 37 Baler w/ # 10 Thrower - Two N.H. 30 ft. Bale Elevators w/Electric Motors - 20 ft. Harvest Handler Single Chain Elevator - Heston model PT 10 PTO Haybind - several Hay Wagons w/Racks - N.I. #18 Manure Spreader Ground Drive on Rubber - N.H. model 518 Manure Spreader (needs new floor) - IH 2 Row Corn planter complete w/Plates 2 Point Fast Hitch - M.H. #33 Grain Drill (Good Condition) - IH model 510 Double Disc Grain Drill w/Seeder - Front End Loader for Small Tractor, like new Ontario 14 hoe Grain Drill on Rubber w/Hyd. Lift - MH Semi Mounted 7 ft. Grass Mower - John Blue 400 gal. Sprayer w. Dickey John Monitor and G.B.M. Foam Market, Skid Mounted. Plus other equipment by time of Auction.

TOOLS AND SHOP EQUIPMENT—Note: Included in the following are items from the (Dick Jones) Shop of Tower City - Large DEWALT Radial Saw mounted on Large DEWALT Table - number of Saw Blades and Accessories for same (NOTE: This is a Top Quality Piece) - DEWALT Jig Saw w/24" Throat w/Motor & Stand - Heavy Duty Steel or Wood Band Saw w/Multiple Speed Drive - American #20 Industrial type Mortising Machine 440 volts - Lot of Hand Tools, Plumber Tools, Wrenches, etc. - Steel Tub Rubber Tire Wheelbarrow (New) - 40 ft. Wooden Extension Ladder - several B&S Engines - One h.p. Brunner Air Compressor - Portable Air Compressor - 4 ton Floor Jack - 20 k.w. Winpower Portable P.T.O. Generator mounted on 2 Wheel Trailer. Also: John Deere model JD 21, 8 h.p. Trencher.

VEHICLES—1966 DIAMOND Truck/16 ft. Bed, 21000 lb., 4-Speed 6 Cy. Engine- Brown 35ft. Flat Bed Trailer, Tandem Axel/Beaver Tail -1971 Pont. Grandville Sedan, full power- 1980 model K.D. 100 Kawasaki Motorcycle - 1985 250 Honda Four Trax w/Snow Plow (needs drive shaft) - 12 ft. Aluminum Boat (3 Person, 550 lb. 10 h.p.)

AG. LIME - CRUSHED STONE - COAL—23 ton Hi-grade Lime F.O.B. Meckleys Limestone Products Mandate - 40 ton 2RC Crushed Stone F.O.B. Eastern Industries Elizabethville Quarry - 1 ton of any size Coal from Pine Creek Coal Company Spring Glen

LAWN MOWERS & GARDEN TRACTORS—Wheel Horse 14 h.p. Bronco Automatic w/42" Deck - 2 - 8 h.p. Craftsman - 1 - 11 h.p. Craftsman w/Bagger - 12 h.p. Cub Cadet - 21 "Lawn Boy" - 20" Craftsman Rotary Mower - Polaris Power Pole Snow Blower - Large Variety of Riding, Self-propelled & Push Mowers - INCLUDING: 16 h.p. Riding Tractor made by DICK JOHNS of Tower City (This is a professionally made piece in Like New Condition) - plus more by time of Auction.

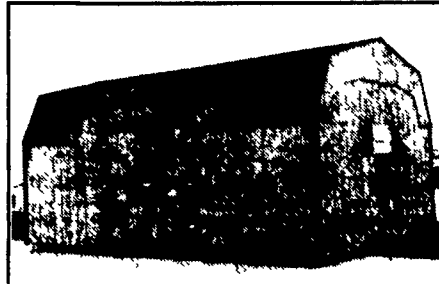
LUMBER—There will be a Supply of Sawed Lumber - Oak - Pine - Poplar - some Cedar & Walnut - Boards - Planks - 2x4's - Fence PLAYGROUND EQUIPMENT—6 & 8 Person Swing Sets - Seesaws - Climbers - Basketball Nets w/Back Boards & Poles - Rubber Matting - etc.—

NURSERY STOCK & SUPPLIES • COINS • ANTIQUES & COLECTIBLES

NEW STORAGE BUILDINGS—Various sizes & Designs from 8' x 8' up, including 12' x 24' One Car Garage w/Steel Overhead Door - NOTE: All Buildings will be sold absolute w/no reserve at approximately 11:00 A.M., not before.

GOOD SELECTION OF WINROSS & ERTL TOYS & NASCAR ITEMS—Including Rare 6th Generation Addition of the Yuengling Beer Truck #744 - Winross Special Ford series - Dale Earnhart, Bill Elliot, Dave Allison, etc. (For more complete list call (717) 692-3076). These items will be sold following the Coins.

AUTOMOTIVE AND MISCELLANEOUS ITEMS—Large ROUND Hyd Press - Air and Hand Operated Greasers & Transmission Oil Pumps - Air Operated Floor Jack - Hyd Transmission Jack - Ford Shop Manuals - Selection of Specialized Auto Mechanics Tools - Portable Wheel Balancer - Portable Standing Generator - Heavy Duty Wet & Dry Shop Vac - Front & Rear Bumpers for Pickup Trucks Wheels & Wheel Covers - various sizes Pickup Truck Caps - Miscellaneous Electric Motors & Shop Tools - Commercial Car Wash Pressure Tank & Pump (not complete, 3 phase motor) - Waste Oil Burner w/Stack Heat Reclaimer



ITEMS OF SPECIAL MENTION

GEORGE MALICK ARTIST PRINT (IF I COULD FIND A HIGHER TREE) #645/700, not framed
Two Electric Guitars, one (Kent) and one (Hondo) - These Items will be sold at 12:00 Noon.

OFFICE EQUIPMENT—Metal Desk - 2 & 4 Drawer Metal File Cabinets - Chair - All Nice. LANDSCAPING TOOLS—Rakes - Shovels - Weed Trimmers - Chain Saws - etc.

(NOTE): CREMO'S will again have a Large Selection of New Tools for Private Sale!

If you have items to consign or donate, contact: Conservation District Office (717) 921-8100, Mervin W. Adams (717) 692-3076, James Leshner (717) 365-3419 or Russel Cassel (717) 566-3284. We will be accepting items at the Fairgrounds starting April 10th and will accept items until 4:00 P.M. - April 14th.

PLEASE NOTE!!!! We are not accepting household goods unless it is Antique or Collectibles! Unsaleable and Junk Items will not be accepted!!

A Fee will be required for all reserve items!!
We will be selling at several places at the same time throughout the Auction.
9:00 A.M. - Small Goods - Tools - Antiques & Collectibles -
Followed by Lawn Mowers, Nursery Stock.
11:00 A.M. - Storage Buildings - Lime - Stone & Coal -
Vehicles and Large Equipment.

Auctioneers:
Mervin W. Adams, AU-00002-L
Auction Coordinator (717) 692-3076
Adams, Deiberts, Deibler, Shoop, Hoover,
Ebersole, McNeal, Jones, Hummel, Keister,
Hepford and Others

TERMS: Cash or Good Check Day of Auction - Acceptable ID Required!

Lunchstand Provided By: Dauphin Co. 4-H Club & Gratz Fire Company & Mbg. Ferry Boat Assoc.

Baked Goods Provided BY: The Dauphin County Society of Farm Women

One time ad —Clip & Save

PUBLIC AUCTION SURPLUS GOVT ITEMS/ DRUG SEIZED ASSETS

SATURDAY, APRIL 8, 1995
at 10:00 A.M.

State Surplus Warehouse at 22nd & Forster Sts., across From Reservoir Park at City Line & Penbrook Boro, Harrisburg, PA

ELECTRONICS/SCALES/JEWELRY 10:00 AM

36 Pagers/Beepers various mfgs, 23 various types of scales, Bearcat Scanner, Timers, Cellular Phones, Compaq Laptop Computer, New Clothing Items, Video Tape, Watch, Gold ID Bracelet, Rings, Holsters, 18KT Geneva Watch, 2 Sentry Safes, Bullet Proof Vest.

SNOWMOBILES/JET SKIS/ORIENTAL RUGS

2 Yamaha 650 Wet Bikes, 1983 Yamaha Snowmobile, 1987 Artic Cat Snowmobile, Shorelander Trailer, 4 Helmets, 2 12x12, 1 9x12 Oriental Style Rugs.

SURPLUS ITEMS 11:30 A.M.

Over 6,000 Items To Be Sold In Lots Including: 113 Pr Camouflage Trousers, 60 Field Ranges, 100 Parkas, 400 Pr Coveralls, 1000's Pcs Hardware, Tools, Clamps, Desks, Chairs, Cabinets, Coats, Paper Products, Wooden Handles, 2 Milling Machines, Plumbing Items, Lube Oil, Fittings, Staples, Soldering Tips, Tables, Tape, Tool Boxes, Belts, Typewriters, Thousands of Items too Numerous To list.

Inspection Day of Auction 8 AM. Removal by 4/14/95 3PM. Sales Tax Collected Unless Exempt Form Signed. All Sales Subject to a 10% Buyer Premium. All items sell as-is without warranty of any kind. No out of state checks.

AUCTION FOR
COMMONWEALTH OF PA



KERRY PAE
AUCTIONEERS

Harrisburg, Pa.