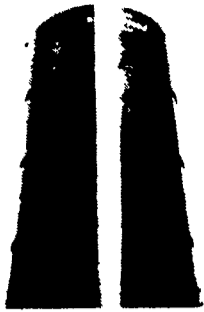


**ATTENTION HARVESTORE OWNERS**



Are you tired of spending all your profit on replacing chains, sprockets, floor, etc? Let Silo Conversion Co. convert your Harvestore® into a usable and profitable top unloading silo.

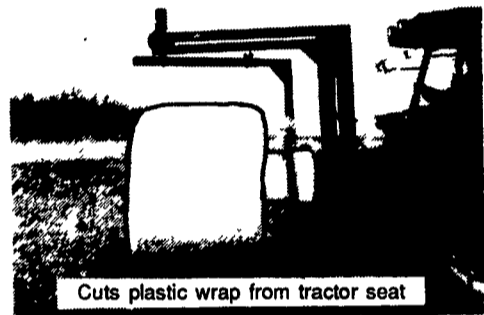
Call Jim Beckham at  
**SILO CONVERSION CO. INC.**  
**(812) 944-7102**

8 yrs. experience installing doors in Harvestore® Silos.

**FARMLUND INC. ROUND BALE WRAPPERS**

Excellent For Dry Hay & Hi-Moisture Bales

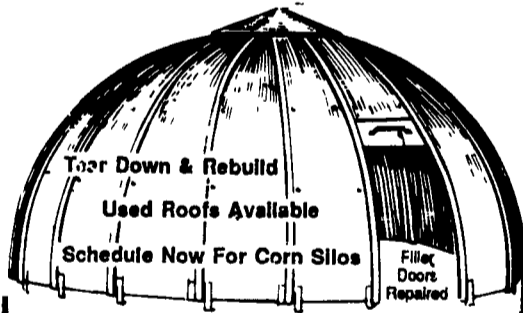
Best Made / A One Man Operation / Best Price



Cuts plastic wrap from tractor seat

"Two machines in one." This hydraulic bale wrapper wraps bales fast and can be used to move bales to barn or feed lot.

BALEGUARD Presto Stretch Film, Competitive Pricing  
3164 Oregon Pike, Leola, Pa. 17540  
Lancaster County  
717-656-7499 Call Collect  
Dealerships Available



Top Down & Rebuild

Used Roofs Available

Schedule Now For Corn Silos

Filler Doors Repaired

**Strengthen Your Silo With Shotcrete**

Fill Pipe Vinyl and Steel	Telescoping Section	Kwik Pipe
New, Used And Reconditioned Silos Available	Vinyl Repair Sleeve	1 Arm Pipe Support Bracket
	Swivel Transition	
	Fiberdome	Fiberglass or Steel
2 Arm Pipe Support Brackets	1030 Multi Flo Spreader	766 Motorized Spreader or Self Propelled Spreader (to be used with silo bags)

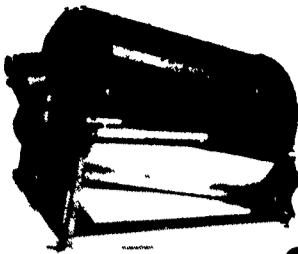
Manufacturers and Builders of New Silos

**S & S Silo Repair**  
(610) 273-3993

CALL TOLL FREE: 800-860-3993

**Silo-Matic**

with **TUMBLE MIX ROTATION**

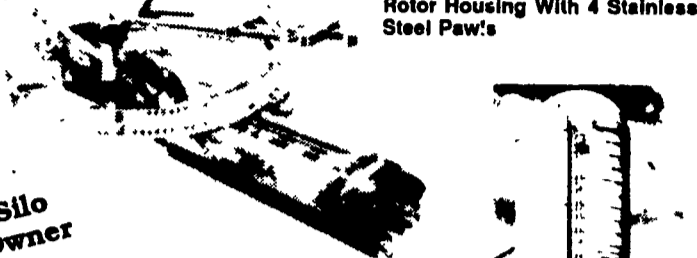


- Beam Scale System
- 7 Different Sizes
- Low Maintenance
- Long-Lasting Stainless Steel Barrel
- Low Power Requirements

Silo-Matic's **GEMINI R/D**

Silo Unloader

Silo-Matic



- Full 26-Inch Stainless Steel Rotor Housing With 4 Stainless Steel Paw's

Silo Owner

Sandblast & Gunite - You Should Sandblast And Clean Surfaces Thoroughly - Than Gunite! This Is The Best Way To Strengthen And Re-line Your Silo.

**Replacement-**

- Filler Pipes
- Both Vinyl & Galvanized
- Silage Spreaders

**FOR SALE**

- 1 - 16' 224D New - One Only! - \$4,000
- 2 - 24x70 Used Fickes Silo \$4,000 Each
- 1 - Used Zero Computer Feeder - Call For Price
- 1 - DM 172 TMR Mixer \$6,900
- 2 DM 235 TMR Mixers \$7,728 Ea.
- Silo Roofs - (2) - 24'; (1) - 22' & (2) 10'

**FICKES/SILO COMPANY, INC**

Manufacturers & Builders



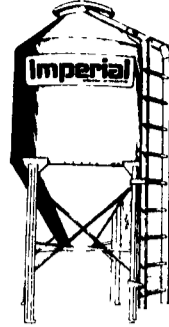
NEWVILLE, PENNSYLVANIA 17241

717 776-3129



Lancaster Farming, Saturday, March 25, 1995-C11

**Imperial Bulk Feed Bins**



100% Smooth Wall Construction  
Vented Ground Control Cover  
Aluminum Ladders  
Bolt-free Storage Area  
1 to 147 Ton Capacity  
Ten Year Bin Warranty

Call 1-800-558-2945

for the dealer nearest you  
Imperial Industries Inc  
Mosinee Wisconsin  
Harlan Iowa Van Wert Ohio

**4 BUILDINGS AND SUPPLIES**

1000 watt mercury vapor lights, \$125/each. 717/354-3105.

1/2" and 3/4", 4x8 plywood cabinetry: birch, and red oak. Sell out 1/4" \$30/sheet and 3/4" \$35/sheet. No Sunday calls, (717)582-2543.

12X30' Black Bear Barn, Insulated, Dry Walled w/ Windows, Electric Outlets, \$3800 OBO. (717)284-2777.

2 8'x16' outside pig pens can also be used calf hutches. Best Offer. Levi Stoltzfus, 633 E. Meadow Rd., Manheim PA 17545.

#3 pine boards, 1"x12"x10-15", \$2.25/each. Must take 25 or more. 717/764-8337.

7 locust posts, \$2 each. 8", 7/8 rebar steel, \$1.00 each. All sizes of new pipe. All types new building tin. (304)265-0026.

Angle Iron 3/4"x3/4" 1/2" thick 20' lengths, \$3 each. 717/766-8013 days, 717/766-7423 evenings & weekends.

Antique building materials, beams, wide pine boards, flooring, doors, etc. 717/249-2304

Antique barn boards, rustic and deeply weathered, natural coloring, never painted, random widths. Ideal for wall covering, picture frames, and decorative crafts. Over 800 feet, \$400. 717-386-5000.

Approx. 1,000 pcs. of 1/4"x14"x17" plate glass. Excellent for windows, building hot houses or whatever. 717-273-3481

Contractor's Library, approx. 100 books, house plans, garage plans, etc. Many books cost over \$30/ea. All or \$150. 717-273-3481.

Arch Type Steel Buildings, Straight Sided or Full Quonset, You Erect and Save Thousands. Call Today for Free Information Blue Mountain Structures 1-800-854-5568.

BARN FLOORING: new, kiln dried, T&G or plain 2x8's, Y.pine, for floors, stalls, studs, rafters. 2x4's roofing perkins. Can deliver. Noah Shirk Sawmill, 717/354-0192.

B grade glass board and plastic sheets. Glenn Beidler, Freeburg, PA, (717)539-8993.

METAL ROOFING and Siding. We'll beat any competitor's regular panel price you mention on orders over 50 square. Call (717)354-2728.

Pre-engineered steel buildings for Agricultural, Commercial or Churches. Authorized Gulf States Dealer. We will build from your plans or will design. **WEAVER CONSTRUCTION**, East Earl, PA. 717-448-5165.

Brick-Tile paver bricks, 1/2" thickness. (610)593-1172.

**CECO... KIRBY... ALLIED...** Steel buildings and components. Retrofit steel re-roofing. Commerce, Industry, Ag. Supply or supply erect. Standard or custom. Complete or addition. Certified permit drawings. Building YOUR business is OUR business. A.S. HOOVER, INC. 3125 Manor Rd., Coatesville, PA 19320. 610-942-2591; 717-445-4962; 1-800-942-2591.

Chain Link Fence, new, slightly imperfect, heavy 9-gauge galvanized. 3'-\$1.00/ft, 4'-\$1.00/ft, 5'-\$1.55/ft, 6'-\$1.65/ft, 7'-\$1.85/ft, 8'-\$1.95/ft. Call 717/822-7820 7-8am or leave message.

Chair Link Fence, 8', industrial grade, approx. 1800' w/accessories & 2 gates, \$2000. 301/582-1938 evenings.

Cramer's Discount Roofing, lowest prices in 3 states. See display ad section 4. (717)567-6782.

Flooring, new wide plank, T&G, timbers, see our display ad. 610/565-6038.

Free Building Materials from 1860 Bucks Co. farmhouse: beams, flooring, old siding, corner staircase. You dismantle & remove. 610/294-9802 evenings.

Good used lumber, 3x10 joists, 2x8 joists, used roofing tin, 6x16 insulation; aluminum ceiling material. Emanuel Esh, Box 87, Johnson RD., Delta, PA 17314.

Heavy Duty Glass panels in frame 3'x7', 1 1/2" thick. One panel 7'9"x7', 1 1/2" thick; two stainless steel panels 3'x7', 1 1/2" frame; plus smaller windows. 717/336-2534.

Locust Posts: small diameter, \$2.50 each; large diameter, \$3.00. Firewood \$30 = 3/4 cord. (610)488-6035.

Log Home Logs: new, 6x6, 6x8, white cedar, single or double, tongue & groove, inexpensive for self-builders \$2.75/LF. (717)354-3105.

Used Gondola shelving, excellent condition, also heavy duty stock room shelving, and heavy duty pallet racking. Priced to sell. 717-263-3404.

WANTED: Building stone from stone ruins or hedgerows. Guernsey cow brown to rust brown coloring. Please call 610-431-3063.

WANTED Old barns, good condition. Will pay fair price. 704-526-5877.

WANTED: Original floor, grainery boards, 2" flooring, barn beams, tobacco sheds, siding. (717)229-2806. mobile 717/880-4549.

WANTED TO BUY: Old attic flooring and log houses. Lanc. Co. 717/626-4520.

WANTED: Wide-weathered-red-barn siding, 4,000 sq. ft needed. Evenings 7-9pm. (717)334-0249.

Wood-Mizer LT30, 10hp, 3 phase sharpener. (717)626-4520.

**S.M.S. Builders POLE BARN AND GARAGES**

717-354-8755 evenings  
717-940-6920 mobile phone  
ask for Sam

**DON'T IGNORE IT - RESTORE IT!**

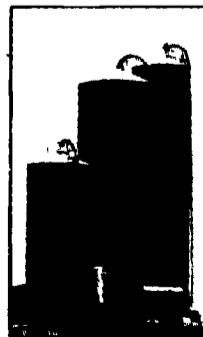
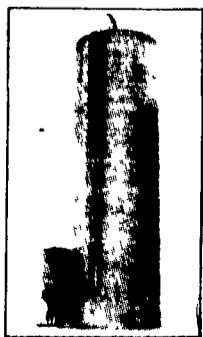
Masonry/Restoration specializing in restoring old stone/brick houses and barns.  
Also Laying Eldorado Stone  
**J&J Restoration**  
717-442-4773

**Big Jim® B.U.C.S.™**



**The Solution to Bottom Unloader Problems...from the Silo Unloader Expert**

Your Jamesway Dealer has loads of information - including an in-depth video - about Big Jim B.U.C.S., the Bottom Unloader Conversion System by Jamesway. See how you can get faster unloading, increased capacity, better quality feed and reduced maintenance in your steel, poured concrete or concrete stave silo. You can even tour a farm with a B.U.C.S. installation at work. So call your Jamesway Dealer now and get the expert advice you need!



If interested in A Tour Of A B.U.C.S. Please Contact Jake or Nelson

**LAPP'S BARN EQUIPMENT**

5935 OLD PHILADELPHIA PIKE, GAP, PA 17527

PHONE: 717-442-8134  
717-768-8301

WE SERVICE WHAT WE SELL

— Radio Dispatched Trucks —

