

**MAILBOX MARKET FOR SALE**

Picket fence, 25 ft, 4' high. Chester Co. 610-932-8286.

Approximately 10000 Bd. Ft of air dried 4/4 oak rough lumber, make offer New commercial steel door jams, various widths. Northumberland Co. 717-758-3084.

Case 1210 nice 45 vibra shank harrow 3pt 269 NH haybine JD self propelled haybine. Perry Co. 717-834-9795

John Deere aw disc 11'6" cut, good condition, \$850. Berks Co. 610-944-9276.

Milling machine, small floor model. Clean, single phrase, power feed table. Excellent gunsmith unit, \$2000 OBO. Howard Co. 301-854-6431.

1983 Case 1490 tractor, power shift, 88hp, 1700 hrs, weights, dual remote, dual PTO, rebuilt motor, shed kept, mint condition, \$13500. Sch. Co. 717-345-4109

MF drill 22 disc AC disc dual wheels both near new John Deere a 1952 3pt new tires. Queen Annas Co., MD 410-758-1524

IH 2000 loader with 60" manure bucket, \$1000 off 544 tractor red hens good layers, \$3.75 each Perry Co. 717-834-3401.

Wheelhorse tractor V8 charger 36" mower 8hp Kohler bad transmission, \$200 Men's 10spd Schwinn, excellent condition, \$50. Bucks Co. 215-757-6667.

1951 dump truck Ford flat head 19000 GVW all original, excellent shape. Lebanon Co. 717-866-6535.

2 purebred polled yearling simmental bulls excellent calving ease traits, performance tested, sire, 1 dark, 1 red, also heifers. Adams Co 717-334-5966.

Walnut planks, 3x14, excellent quality, plank flooring, t&g. Wanted-2x8 4 head molder, large stroke sander, foley planer molder Del. Co. 610-565-6038.

Farmall cub implements, cultivators, front and back, \$250. One row corn planter, with fertilizer box, \$200. Chester Co. 610-286-9324

8 1/2ft western snow plow, fits Ford all hyd power angle, very good Berks Co. 717-933-5364.

B5 14hp IC engine hardly used, like new, runs good, round bales grass hay, barn kept York Co 717-382-4964

Tractor Ferguson 30 tires and hydraulics perfect excellent condition, ready to work, \$2300. Berks Co. 610-374-9757.

1974 Dodge dump truck 500 series, new engine, tires, bed, \$3500. 1969-Dodge 300 series, dump stake body, \$1200. Chester Co. 582-7357 or 469-9488.

1972 Honda 450 4spd double overhead cam 16000 miles, good condition, \$275. Berks Co. 610-385-7202.

Five hol heffer Curtis breeding, \$1.20/lb. Two male pea fowl and long tails, \$75 each. Lebanon Co. 717-865-4931.

Open buggy, less than 3 years old, real good condition. David King, 155 Herr Road, Ronks, PA 17572.

217 Owattona haybined, \$1100. 16A flail chopper, \$400. Two NH blowers, \$25, \$50. #16 International harvester, best offer. Lanc. Co. 717-336-2612.

850 Case Crawler loader w/ripper, \$10500. 800-874-2928 Fax 717-584-3127

JD plow 3 bottom 14" 3 pt hitch, good cond. Centre Co. 814-383-2817.

1988 Iveco 230T truck long wheelbase, 6 new Michelin tires 78,000 mi. 1 owner, very good cond, no bed. Schuylkill Co. 717-425-2754.

Five unit calf kennel inside feed alley used one year \$900. JD 4 row corn cultivator \$1000. Leb. Co. 717-867-5278.

1983 Ford F-250 4x4 heavy duty needs minor work, inspected till 4/30/94 103,000 miles. Asking \$1850. Leave message. Berks Co. 610-488-6379.

1977 Yamaha 650 low mileage, good tires. Chester Co. \$350. 610-857-3839.

Kelly 3 pt. backhoe model 20 or trade for tractor and backhoe loader, Chester Co. 610-932-3352.

Alaskan camper for pickup, good cond. Also Airstream trailer, needs work, both for \$1000. Call after 8 p.m. Middlesex Co. 609-448-1241

17' Chest freezer good \$100. 50,000 BTU bullet heater \$75. 2 drawer 2 shelf tool cabinet, heavy, best offer. Lanc. Co. 717-656-6906.

64 gals gal jugs \$1 each, qts. & 1/2 gal. - sq. juice jars \$.75 ea J K Wise 165 Sipe Rd., York Haven, Pa. after 3 p.m. York Co 717-938-2951.

4 shop clipper 2 extra heads 2 black 2 brown \$65 to \$100 ea. Call evenings after 6:30. Lanc. Co. 717-687-0204.

Pittsburgh plow 1-16" bottom 3 pt. ex cond. \$350. OBO. Lanc. Co. 717-664-3983.

Two 8 ft.x16 ft. outside pig pens can also be used for calf hutches, best offer, 633 E. Meadow Rd., Manheim, Lanc. Co.

Boat motor & trailer, fiberglass 18 ft \$400 or best offer, 2 Ford truck trans. Best Offer. Chester Co. 717-529-2125.

(2) 9x7' wood garage doors, good shape with all tracks and hardware. Leb. Co. 717-866-5378.

400 Cyclo corn planter, 6N, no-till, insecticide, monitor, liquid or dry. Badger forage wagon, 3 beater w/roof, tandem. Juniata Co. 717-589-7481.

John Deere #660 rubber teeth hay rake with front dolly wheel, good cond. \$1350 Ct. 203-265-6012.

Surge 600 gal. bulk tank w/washer Boumatic 2" SS pipeline used 1 yr. \$3500. Each or \$6500 for both. Millifin Co. 814-542-8936.

Used Fickes silo 12'x30', roof, fill pipe distributor, very good cond. will disassemble and load on your truck. Cumb. Co. 717-532-7030.

Three Angus heifers one Angus steer about 350 lbs. Berks Co. 610-286-5422.

Mixed hay small bales \$60 per ton, about 3-4 ton, you haul. Schuylkill Co. 717-644-2443.

Corn silage 11% protein \$20 per ton, 30' Little Giant elevator with corn chute. \$750. Franklin Co. 717-532-7837.

Tomato cages between 500-700 60 cents each. Extra heavy duty call after 6 p.m. Ask for Walt. Mercer Co 609-896-2257.

3 left hand moldboards IHC no. 464600 all for \$35. 175 bu grain sorghum for feed \$1.50 per bu. at farm. Homemade forge No Sunday Calls Sch Co. 717-943-2331

13 yr. old sorrel jack mule rides and drives, 14 hands Montour Co 717-437-2185

Registered Charolais bulls and females, all ages Must sell, reasonable Ex bloodlines and disposition Also cow-calf pairs. Franklin Co 717-369-3831.

Farmall Super M with 3 pt hitch, good cond IH 3x16 semi mount plow Westmoreland 412-238-4324.

IH 615 Combine, 6 RN 4 row planter, cub cadets, 129, 104, 71, all units field ready. Adams Co. 717-359-7534.

K-B-A John Deere 28 disk \$300. 275 gal. oil tank \$50. 55 gal. barrel with lid \$7. Lanc. Co. 717-626-6517.

NH 489 haybine \$3475. NH 455 trailer mower \$950. NI 325 narrow corn picker 12 roll bed \$1875. 18 ft. kicker waqgon \$875. NH 775 skid-steer loader diesel, hydrostatic \$6000. Lanc. Co. 717-354-0266

JD 336 baler with kicker, ex. cond. \$5000. White 5400 6 row \$1200 16 ft. fold up harrow \$800. Frederick Co. 717-473-8645.

300 6 cyl. Ford engine, good shape, can be test driven on highway till June, No Sunday calls. St. Mary's Md. 301-475-2358.

Tapan double oven electric stove, 1 yr. old, white with black front. Columbia Co. 717-799-5808.

Quality timothy hay, small square bales, 4x4 round bales of bright wheat, straw, grass hay, and mulch hay. York Co. 717-632-7864.

Int. 720 5 bottom auto reset plow, onland hitch, JD grain drill. Carbon Co. 717-386-2215.

New Holland 315 square baler with thrower, ex. shape. \$3950. Bradford Co. 717-673-5991.

JD 3 pt. 4 bottom hydraulic reset plow, 4 Westfall vacuplus 60 lb. bucket milkers. 480 Newville Rd., Shippensburg, Pa. 17257.

Antiques, Heatrola, cast iron bath tub, kitchen sink, belt sander. Leb. Co. 717-867-1011.

Patz silo unloader 98B very good combd. 5 HP motor out of 20 ft silo \$1500. Cumb. Co. 717-776-3424.

Case 1494 with cab, 4230 JD PS with cab, air, 4250 JD 4WD PS cab, air, AMC Eagle 4x4. Fred Co. 301-371-7704.

Massey Ferguson side delivery rake 3 PH \$350. Allis Chalmers power unit Model C \$300. Litchfield 203-364-5873.

MF 39 corn planter 2R 3 pt. extra plates A1 cond. field ready \$475. Chester Co. 610-286-0003 anytime.

Farmall super A, ex. w. weights, cultivator, plow, 4 row cultivators for JD 630 Ford 3 pt. mower Al. York Co. 717-225-6045.

Potato digger power take-off on rubber tire, good cond. also 1974 Chevy cattle truck with racks. Adams Co. 717-359-7594.

1984 F-250 diesel parts truck \$1800. 1991 Dodge dually 4 WD with cummins power \$14,500. After 7 p.m. Frank. Co. 717-349-2127.

10 yr. old white saddle bred trotter, pleasure horse rides & drives nice w/style. Aaron Lapp, 473 Centerville Rd., Gordonville, Pa. 17529. Lanc. Co.

Clark self contained floor scrubber with 36V charger, good cond. \$250 OBO. After 6 PM. Lanc. Co. 717-548-3647.

Pride of ranch cattle waterers \$25. Goulds pump Jack \$25; Parnack 6 volt electric fencers \$15. 5 bath tubs \$5 each. Lanc. Co. 717-656-6365.

Used 12' 3/4" fuel hoses and nozzles \$3. ea. Levi E. Glick, 418 Furnace Rd., Quarryville, Pa. 17566.

1978 Renault Lecar as is for parts \$175. Lanc. Co. 717-367-1597.

Honad XR600 runs good, fireplace insert with blower, rock shaft for Farmall Cub. Carroll Co. 410-635-2348.

1984 Honda Magna motorcycle, 700 cc V4 cyl. liquid cooled, less than 5000 orig. miles, garage kept, like new cond. \$2800. Lanc. Co. 610-593-7034.

Stick/coil nails for air nails, also power driven fasteners, many kinds, cheap, very large gear/pulley pullers. Lanc. Co. 717-354-9731.

Kubota B6000 4 WD 3 pth pto differential lock, loader, rototiller \$4500. Luzerne Co. 717-477-5215.

IHC #56 4 row wide planter, field ready disks, opener fiberglass boxes \$800. Carroll Co. Md. 410-756-2828.

Duroc boar 10 months old, delivery possible \$150. Lehigh Co. 610-767-4735.

Case 530 diesel backhoe new crank, main and rod bearings, clutch and pressure plate. Lycoming Co. 717-433-3630.

Round baled hay, manure pumps, roller mill, Century field sprayer; NH 367 spreader, 8 station computer feeder; make offer. Fred. Co. 301-271-2268.

1968 Dodge D400 new engine 15'x8' box, tarp top, good running cond. Price negotiable. Dauphin Co. 717-566-3407.

IH 400 6 Rn corn planter, field ready \$1200. Bedford Co. 814-847-2601.

Monkey 4 mo. old, lambs, barbadoes, mowfio, 4 horned, pygmy kids. Clinton Co. 717-726-3363

Manure fork for hydromack skid steer \$250. Chicken plucker, incubator 3 pt AC 6 row cultivator. Union Co. 717-966-3965.

IH 966 diesel tractor, 120 HP, year around cab, heat, 75% radial rubber, nice 8000. AKC Lhasa-Apsc male, 5 yrs. \$50. Lanc Co 717-653-0687.

Burlap bags 100 lbs. usec 1 season very nice \$25 each. David King, Cochranville, Pa. Chester Co. 610-593-5345

4 yr. old standardbred trotter, top driver, man's horse, 8 yr. old. Mule gelding, works anywhere. \$900. Lanc. Co. 7-7:30 PM 717-394-4422.

Reg. Hereford cows bred heifers open heifer, bulls can deliver. New Holland 912 haybine header. Sch. Co. 717-345-2488.

4 lgioo calf hutches, heavy duty industrial shamrock engine hoist Berks Co. 717-933-5771

JD 3 bottom 12" trip back trail plows, hydraulic lift, Juniata Co 717-734-3990.

Amco 12' double offset disc harrow, shock absorber gangs, cuts, levels well, bought larger Amco, ex cond. Evenings. Lanc Co 717-872-9067.

348 White plow 3 pt. ASR 1500. 13 ft. White flex grain head \$1500. York Co. 717-244-6109.

Two original 7 HP Cub Cadets one running with mower deck \$295. One repair or parts \$100. York Co 717-244-3415.

Alfalfa hay 3rd cutting \$150 a bale 20T ear com \$80 a ton. Lanc. Co. 717-665-2152.

73 GMC tandem axle dump truck 14 ft. body, diesel, good inspection PS air brakes, trailer hookup. \$8000 OBO. Montg. Co. 215-679-5037.

Medium red clover seed \$50 a bushel. Cleaned. Carbon Co. 717-386-5194.

1969 F750 truck new engine, new treated boards on 20 ft. Brightbill bed. Good 20 in. tires, no rust \$1600. Schuylkill Co. 717-425-2754.

1988 Dodge Ramcharger 318 EFI PW, PL, PS, Deluxe AM/FM radio cassette, new tires, blue-gray running boards \$5900. Lanc. Co. 717-872-5393.

4 Holstein heifers due in June & July 2 with records all vaccinated bred ABC. Lanc. Co. 717-687-6321.

Feeder pigs Pseudo free all shots and wormed avail. every 2 weeks. AKC Sheltie puppies, playful, shots \$175-\$200. Lanc. Co 717-442-9377.

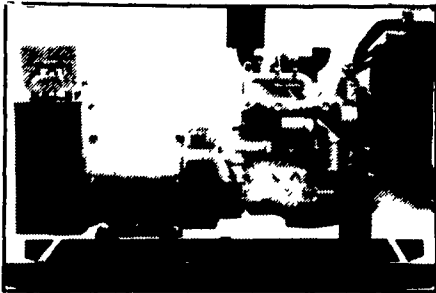
Heavy timber 20 6x8"x18' one 8x10"x27' one 8x10"x18' 400+ rough faced cement blocks used. Glou. Co. NJ 609-589-6437.

Fork for New Holland skid loader, black raspberry plants .20 @ team 8 yr. white Percherons used in wagon rides. Lanc. Co. 717-445-4008.

JD New manure webs to fit Model 660 or 680. AC WC tractor spoke wheels, good tin, stuck. Westmd. 412-593-6198.

Reg Missouri foxtrotter gelding, 2 1/2 years old, greenbroke for trail riding, solid black, 15H, ex. disposition, natural gait \$3000. York Co. 717-266-7326.

**GENERATORS**



**AUTOMATIC and MANUAL SYSTEMS**

**DIESEL L.P. GAS NAT. GAS NEW & USED**

**LEROY SOMER PTO ALTERNATORS**

**BRUSHLESS INDUSTRIAL GRADE 11 to 60 KW**

**READY FOR THE NEXT STORM?**

For Sales and Service Call The People Who Know Generators

**MARTIN ELECTRIC PLANTS**

280 Pleasant Valley Rd., Ephrata, PA 17522-8620

Tel: 717-733-7968 Fax: 717-733-1981

Underwriters Laboratories Approved Master Labeled Lightning Rod Systems

**TEATES LIGHTNING PROTECTION**

L.P.I. Certified Master Installer  
Farm, Residential and Commercial

**FREE ESTIMATES**

**TIM SHAFFER** P.O. Box 136  
(717) 374-7090 Freeburg, PA 17827

**RECON ENGINES**  
DIESEL PERFORMANCE SPECIALISTS  
(717) 354-4801

Specializing In  
**Used Rebuilt And Exchange 3208 Caterpillar Engines**

**SALES SERVICE PARTS**

**DIESEL POWER SUPPLY**  
DIESEL ENGINES - POWER UNITS  
415 PETERS RD. GORDONVILLE, PA 17529

Misc. New-Used And Trade-In Diesel Engines

**Cummins SPECIALIZING IN B&C SERIES**

**The WOOD MASTER**  
Hot Water Outdoor Wood Furnace  
Model 434 and Model 546

**Safety**  
• Located outside eliminates wood mess and danger of fire in your home

**Quality**  
• Total in house maintenance by professionals who pride and care in their craftsmanship and it shows

**Round Design**  
• More even heat transfer  
• Approximately 40" less than square - easy clean up - no hard to reach corners

**Versatility**  
• Makes it compatible to existing systems (forced air floor heat baseboard - existing boilers)

**Efficiency**  
• The smart heat battle with the right location also makes the furnace even more spacious and performance others only wish they had

**Fuel Door**  
• Spacious air cooled located at comfortable filling height

**Compare**  
• Workmanship Round Design efficiency standard Options great performance and appearance - and on top of all that competitive price to make the WoodMaster the most affordable outdoor furnace on the market

Interested in burning your waste and making heat. Here's a different heating system. Burn your scrap wood, sawdust and papers. Heat your shop as well as your home.

Available with the Hoover Air Pump.

**OUTDOOR HEAT INC.**  
RD 4 Box 4262A  
Mohnton, PA 19540  
**(610) 856-1386** Rod or Kathy