

ATTENTION POND OWNERS

Tired of using expensive chemicals to control aquatic vegetation? Tripliod Grass Carp eat pond weeds for a natural long term pond clean-up solution. Other fish, food, aerators, more. Multistate delivery.

(800)99-GRASS (800)994-7277
Sproch Fish Hatchery

Duncannon, PA 17020 Catalog avail in spring. Call or write for info.
 Largest Tripliod Grass Carp (White Amur) dealer in PA

Orchard Equipment

(717) 546-5574

- FMC LV-300 Airblast Sprayer, PTO, \$250
 - HydraLadder, 3 wheel \$750
 - 4 Electric Cold Storage doors, 8x6, \$1000
 - 3 pt. forks, \$100
 - Rotary Mower, 6 ft. 3 pt., \$250
 - Limb lopper 60" overall Air Pruner \$700 (used twice list price \$1100)
 - Limb lopper Pneumatic Peach Thinners, (2) at \$300 each
 - Tractor tires, 16x16.1 Goodyear 6 ply. mounted, tires and rims \$600
 - Lely-Rotera 6 ft. Rotary Harrow, \$250
 - Mechanical transplanter, 3 pt. single row, exc. cond., plant up to 1 ft. spacing \$500
 - Stone picker, Riteway, Hydraulic reel, hydraulic dump, \$3000
 - Soil fumigator, Commerical 9 tooth, 7 ft. Coverage, \$1000
 - Lime Spreader Truck, Ford 1000, Superduty Spinner style, good farm truck, \$1500
 - Wisconsin gas power unit, 4 cylinder, electric start, marine special, water proof plugs, \$500
- (717) 546-5574**

J.L. HOLLINGER & SONS INC.

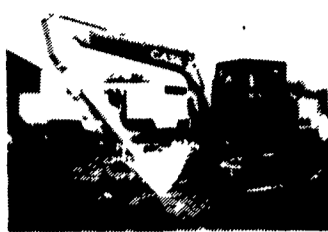
RT. 72N, Manheim, PA.

717-664-2444 8 AM To 6 PM

NEW & USED Farm & Construction Equip.

717-665-2354 After 6 PM

FAX 717-664-2835



'88 Case 688 EROPS cab, 30" bucket.....\$33,500



'86 John Deere 550B 6-way Dozer ROPS Canopy..\$22,500



'87 Case 455C Loader GP Bucket, ROPS Canopy & Sweep.....\$25,000



'88 Ford 555B TLB Cab, Standard Hoe, 4WD \$25,000

EXCAVATORS

- '79 Case 880B EROPS cab, house leveler, 42" bucket CALL
- '88 Case 688, EROPS cab, 30" bucket.. \$33,500

TRAILERS

- Eager Beaver 10HA tag-a-long Trailer, air brakes \$6,750

SKID LOADERS

- '90 NH L455, Skid Loader, Flotation Tires, GP, Bucket \$6,500
- '91 Bobcat 743B, w/909 backhoe attach \$15,500
- '89 Case 1835C Utility Bucket. \$10,500
- '87 Bobcat 743, GP bucket, aux. hyd 1500 hrs \$9,750

FORKLIFTS

- '87 Dynalift D4 P60 Shooting Boom 35' reach, 6000 lbs., Lift \$35,000
- Case 586C 21' mast, Cummins diesel. \$16,500

LOADERS

- '90 Case 821, 4WD, art. wheel loader, GP bucket, full cab . \$75,000
- '87 Trojan 1500Z Art 4WD Loader with Forks, EROPS Cab \$25,000
- '87 Kobelco LK700, EROPS cab, 4yd GP bucket.....\$27,500
- '85 Kobelco LK300, EROPS cab, GP bucket. \$23,500
- '77 JD 544B, art. wheel loader, 4 WD GP bucket, cab. . . . \$18,500
- JD 644A, 4WD ART. Loader, GP Bucket, Full Cab \$19,500
- Case W-14, 4WD ART. Loader, GP Bucket, Full Cab, NEEDS ENGINE WORK. \$12,500

Case W-9, Cab, GP Bucket, Good Tires, needs minor engine work \$5,200

BACKHOES

- '92 Case 580 Super K, TLB, EROPS Cab, 4WD, Ex-Hoe, 4WD. \$45,000
- '89 Case 580K TLB EROPS cab, extend-a-hoe, 4WD. . . \$32,000
- '88 Ford 555B TLB, EROPS cab, standard hoe, 4WD. . . \$25,000
- '87 Case 580 Super E TLB, EROPS cab, extend-a-hoe \$19,500
- '87 Case 580 Super E TLB, EROPS cab, standard hoe, 4WD \$24,000
- Case 580B TLB, OROPS canopy, standard hoe. \$9,000
- '87 JCB 1400B TLB, cab, extend-ahoe, 4WD \$24,500
- JD 310D, TLB, full cab, standard hoe \$42,500
- JD 310, TLB, ROPS canopy, standard hoe \$8,750

CRAWLERS

- '86 Case 1155E crawler loader, GP bucket, OROPS canopy, sweeps. \$37,500
- CASE 850B crawler loader, GP bucket, ROPS canopy \$16,500
- IH TD6 Crawler Loader, 4'1 bucket, diesel. \$6,250

FARM TRACTORS & WAGON

- Ferrari 85, Art Farm Tractor, 33 HP, 3 Pt PTO. \$6,500
- Ford 4000 \$4,900
- Farmbilt Tandem Axle Hay Wagon, Like New Cond. . . \$3,000



GUNTHER HEUSSMAN INC.

4801 S. 5TH ST., EMMAUS, PA 18049

610-965-5203

New Grain Header Wagons In Stock

WE ARE CASH BUYERS FOR CLEAN, LATE MODEL FARM EQUIPMENT

6500 Bale Wire In Stock

QUALITY TRACTORS

- 1982 JD 4440, Cab, Air, Quad Range, 20x38 Rubber, Good Condition
- JD 4240 Diesel, Cab, Air, Quad Range, Good Cond.
- 1981 JD 4040, Cab, Air, Quad Range, Excellent Cond.
- JD 3155 Diesel, Cab, Air, MFD, 2200 Hrs., Excel. Cond.
- JD 2955 Diesel, Cab, Air, MFD, Hi-Lo, Excel. Cond.
- JD 2955 Diesel, Cab, Air, Hi-Lo, 1700 Hrs., Excel. Cond.
- JD 2755 Diesel, Cab, Air, Hi-Lo, MFD, Excel. Cond.
- JD 2755 Diesel, Cab, Air, Hi-Lo, Excel. Cond.
- 1980 JD 2640, Hi-Lo, Indept. PTO, Good Cond.
- JD 3020 Diesel, Side Console, Syncro Range, WF, Dual Hyd., Roll Guard & Canopy, 1 Owner
- JD 2240 Diesel, Indpt. PTO, Dual Hyd., Good Cond.
- 1967, JD 3020 Diesel, Dual Hyd., WF, 1 Owner, Good Cond.
- 1981 IH 1086 Diesel, Cab, Air, 3,100 Hrs., 1 Owner, Excel. Cond.
- IH 886 Diesel, Cab, Air, 3200 Hrs., 1 Owner, Immaculate
- IH 686 Diesel, 3 Pt. Dual Hyd., 16x38 Rubber, Good Cond.
- IH 1466 Diesel, Cab, w/Air, Good Cond.
- IH 1066 Diesel, w/Year Around Cab, Good Cond.
- IH 966 Diesel, Cab, Air, Black Stripe, Very Nice
- IH 766 Diesel Black Stripe w/Cab, 1 Owner, Excel. Cond.
- IH 856 Diesel, Fender, 3 Pt., 18.38 Rubber, Very Good Condition
- IH 574 Diesel, Utility, Good Condition
- MF 1085 Diesel, Factory Cab, Good Condition
- MF 298 Diesel, 1900 Hrs., Very Nice Condition
- MF 35, Power Steering, 1800 Hrs. 1 Of A Kind

HARVESTERS

- JD 5820 Diesel, Cab, Air, Hydro, 4x4, 2000 Hrs., Very Nice
- JD 3970 Harvester, w/Electrical Controls, Good Cond.
- JD 3940 harvester w/Electrical Controls
- JD 483 4RN Forage Head

HAY EQUIPMENT

- JD 338 baler **SOLD** new
- NH 320 baler w/1/4 turn chute, excel. cond.
- Ford NH 311 baler w/hyd. belt throw, excel. cond.
- NH 451 3 pt mower
- NH 5 **SOLD** rake
- JD 716A forage wagon w/tandem axle
- NH 1034 Bale Wagon, Tandem Axle, 105 Bale Capacity
- NH 472, 7' haybine, Like New
- Ford NH 1038 Bale Wagon, 105 Bale Cap., Single Bale Unload & Retrieve, Almost New
- JD 435 Round Baler, Very Nice

- NH 277 Baler 2/Thrower, Good Cond.
- Deutz Fahr 2 Star Tedder
- NH 846 Round Baler
- NH 847 Round Baler, Excel. Cond.
- JD 327 w/30 Ejector, Excellent Condition
- JD 535 Round Baler w/Monitor, Excel. Cond.
- New Farmco 18' Steel Side Hay Wagons
- NH 315 Baler w/Thrower
- Gehl 99 Blower
- Kuhn 2 Star, 3 Pt. Tedder, Like New
- JD 1360, Mower Conditioner, Good Cond.
- JD 336 Baler w/30 Ejector, Good Cond.
- NH 162 4 Star Tedder, Very Nice
- NH 36, 6' Flail Chopper, Good Cond.

MISCELLANEOUS EQUIPMENT

- JD 7000 4RN Dry Fertilizer, Insecticide, Monitor, No-Till Coulters
- JD 27, 14' Stalk Shredder
- IH 900 4R corn planter, dry fert. insecticide, monitor, excel. cond.
- NH 353 grinder mixer w/scales, very nice
- Papec grinder mixer w/molasses pump, good cond.
- JD 7000 4R dry fertilizer, insecticide, very nice
- Craft 85", 3 pt. Snow Blower, Good Cond.
- Westco Rock Picker w/Hyd. Reel
- JD 146 Loader for Utility Tractors
- JD 1508, 15' Batwing Mower, Very Nice
- Brillion 10' Alfalfa Seeder, Double Box
- JD 7000 4RW Insecticide, No Fertilizer, Good Condition
- NH 302 Scaper **SOLD** Spreader, Very Nice
- JD RM 6R Cultivator
- IH #80 Snow Blower
- NH 352 Grinder Mixer w/Fold Unloading Auger

QUALITY COMBINES (Displayed Inside Building)

- 1982 JD 4420 Diesel, 1800 Hrs., Fully Equipped, Excel. Cond.
- 1981 JD 4420 Diesel, 1700 hrs., Fully Equipped, Excel. Cond.
- JD 6600 D **SOLD** Cab, Air
- IH 1460, Cab, Air, Hydro, Good Cond., Choice Of Heads
- MF 13' Flex Head w/UII Reel
- IH 820 15' Flex Head, Excel. Cond.
- JD 213 & **SOLD** heads

CORN PICKERS

- JD 300 Husker w/3RN Head
- NI Super Sheller for 324 & 325 Pickers
- NI 325 2RN, 12 Roll Bed, Late Model
- NI 324 2RW, 12 Roll Bed, Late Model
- NI 324 2RW w/Super Sheller, Excel. Cond.

CORN HEADS

- JD 343, 3RN
- JD 443, 4RN
- JD 444, 4RW
- JD 643 Hi Tin
- JD 643 Oil Bath
- JD 643 Side Hill
- AC 430 Black, 4RN
- AC 630 M2 or L2
- IH 943 4RN
- IH 843 4RN
- IH 844 4RW
- MF 1144 4RW
- MF 1143 4RN

PLOWS

- IH 720 6x18 Spring Reset, Onland Hitch
- IH 735, 6 Base, Variable Width Spring Reset
- IH 720 6x18 Spring Reset
- IH 720 5x18 Spring Reset
- IH 720 4x18 Spring Reset
- IH 710 5x18 Spring Reset
- IH 710 4x18 Spring Reset
- JD 2800, 5 Base, Variable Width, Spring Reset
- JD 1450 4&5x18 Spring Trip
- JD Add On Base for 2500 Plows

TILLAGE

- Brillion 15' Roller Harrow, In Board Wheels, Like New
- JD 215, 12' Dura Cushion Disc
- Amco 12' Rock Flex Disc
- JD 1635, 12' Heavy Weight Disc, Excel. Cond.
- JD 210 12' Disc, Excel. Cond.
- Brillion 14' Roller Harrow, Good Cond.
- Brillion 12' Cultimulcher, Good Condition
- JD 1710, 9 or 11 Shank Mulch Tiller, Excel. Cond.
- JD 220 18' Black Gang Hyd. Fold Disc
- IH #14 5 Shank V-Ripper
- JD 12' AW Disc
- Bearcat 13' Cultimulcher, Dual Wheels

