

JD 8560 3000 hrs., 3 pt., excellent condition, \$60,000  
 JD 4960 FWD Cab, 1100 hrs, 3 outlets duals, JD Warranty \$75,000  
 JD 4955 FWD, Cab, 3700 Hrs, 3 Outlets and Duals \$55,000  
 JD 7800 FWD, Cab, 1700 Hrs., 3 Outlets, Duals, JD Warranty \$56,000  
 JD 4455 FWD, 1992, Cab, 3 Outlets, Duals, \$52,000  
 JD 4250 FWD, Cab, 4000 Hrs., New Motor, \$34,000  
 JD 4840, Cab, 5000 Hrs., New Paint, \$25,000  
 JD 4040 Cab, 3000 Hrs., \$20,000  
 JD 4230 Cab, 4300 Hrs., \$14,000  
 JD 3020 Side Console, Excellent Shape, \$9,000  
 JD 3020 — Controls, Excellent Shape, \$8,500

(609) 455-3462 Days  
 (609) 935-9345 Evenings Ask for Eddie

**LEITER'S HARDWARE AND IMPLEMENTS**

103 South Carlisle Street  
 Greencastle, PA 17225  
 (717) 597-2151

**FOR SALE**

Int. Tractor 856 W/Cab; 684; 674; 504; 400; 354; 284; 656, W.L. JD 3010; MF 150; 65; 205-4; Ford 601; 8N; 530 Case; NH Haybine; NH 630 Round Baler; 241 IHC Baler; 8 Ton Bin Wagon; NH, JD, IHC, rakes; JD 400; 285 & 265 lawn mowers. Disc Harrows, Wagons & Eleys

• TRACTOR  
 • CARBURETOR REBUILDING  
 • SKID LOADER CARBS  
 • 6-MONTH WARRANTY  
 Return Shipment Anywhere  
**FARMERS SERVICE**  
 216-482-4180

**TRACTOR PARTS**  
 New, Rebuilt, Used. Low Prices. FREE CATALOG. Nationwide Locator Service.  
 Ag Tractor Supply  
 PO Box 276  
 Stuart, IA 50250  
 Phone Toll Free: 800-944-2898



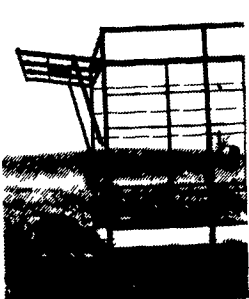
1983 Hesston Windrower 6550, 14' head, cab, air, 2240 hrs. \$12,000. Must Sell Make Offer  
**FREY DAIRY FARMS INC.**  
 2646 River Road  
 Conestoga, PA 17516  
**717-872-6071**

**LAGOON PUMP**  
 Agitation and Pump In One  
 32' "Houle",  
 Used 3 Years,  
 Good Condition  
**\$6,750**  
**(717) 933-5741**

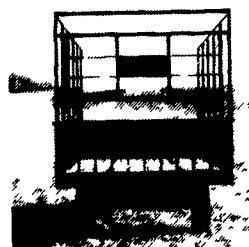


1980 JD 4840 Cab, Air, Powershift, 20.8R38 Duals, 4750 Hours, 50% Tread  
**\$25,500 Must Sell Make Offer**  
**Frey Dairy Farm Inc.**  
 2646 River Road., Conestoga, PA 17516  
**717-872-6071**

**DUTCH BROTHERS**



**Unique Rear Unloading**



- 18' x 8' inside
- 14 ga square tubing, for extra strength and long life
- Front and rear openings need only 38" clearance
- End gates made of extra heavy expanded metal, and spring loaded latches
- Beds built of all oak

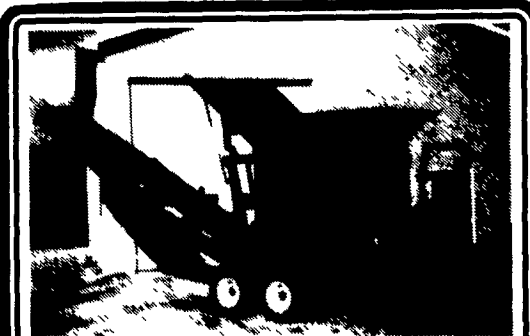
**New Chain Release Side Opening**

- 3 x 8 main beams
- 2' x 5' cross member
- Nailed with galvanized nails
- Bolted with plated bolts
- Fabricated side rail for extra strength
- 8 ton gear
- 11L tires & tubes
- Extension tongue
- Built to last

**HAY SEASON SPECIAL**

**Dutch Brothers**  
 (717) 776-7465 or  
 (717) 776-3363

**Options:**  
 Running Gears & Flat Beds



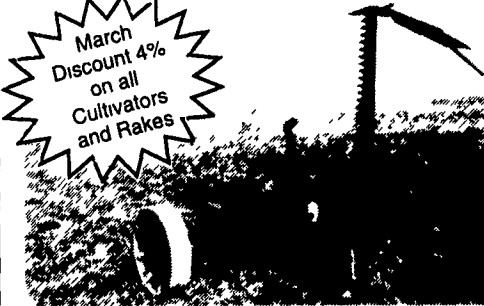
**6650 Farm Hand Tub Grinder**  
 Set up for Mulch. Also Hay Grinder, Excellent Cond., Electronic Tub, Speed Control  
**(814)793-3923**

**FOR SALE**

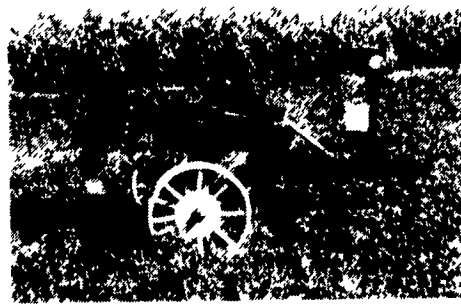


**Used Belarus 560 2WD**  
 65 HP, 1400 Hrs.  
 Call 717-538-9564  
 Watsonstown, PA

**The I & J Cultivator**



**MOWERS:** 3 point or trailing features: guards & blade, move back and forth cuts like a scissors, virtually no plugging. Great for the grazing areas.



**DEEP TILL SLITTER:** Available in 1 or 2 shanks, optional hydraulics. On Sale Now

**I & J MANUFACTURING**  
 DEPT. LF, 5302 Amish Road • Gap, PA 17527  
**717-442-9451**

(Call Between 8:45-9:00 A.M. Weekday Ask For Jake)

**TRACTOR REPAIRS**

- We Have Experienced Ford Tractor Mechanics That Specialize In Ford Tractor Repairs -
- We Specialize In Ford Tractors And Have Since 1921
- Call For Quotes

**717-949-2000**



**KELLER BROS.**

RD 7 Box 405  
 LEBANON, PA

**Excellent Ford Tractors**

- TW-10, DP, weights, local trade, 5,100 hrs.
- 9600, DP, weights, 4,200 hrs.
- 7710 II, cab, air, 18.4Rx34, 19 **SOLD** 1,100 hrs.
- 7710, 4WD, cab, air w/Ford loa **SOLD** hrs.
- 7710, DP, 18.4x34, dual remotes, 1,800 hrs.
- 7600, DP, dual remotes, 18.4x34, 3100 hrs.
- 7000, cab, flat deck, DP, 540 & 1000 RPM
- 6610 II, 4WD, canopy w/Ford loader, 1,000 hrs.
- 6610 II, cab, 18.4x34, DP, 1,600 hrs.
- 6600, factory cab, DP, dual remotes, 4,400 hrs.
- 5610 II, cab **SOLD**, 900 hrs.
- 5610 II, 4WD, DP w/Ford 7 **SOLD** r, 1,100 hrs.
- 5610 II, canopy, DP, dual deluxe remotes, 1,600 hrs.
- 5610, DP, 18.4x30, 1,800 hrs.
- 5610 II, roll bar w/Ford loader, 650 hrs.
- 4610 II, 4WD, dual delux **SOLD**, 400 hrs.
- 4610 II, 16.9x30, re **SOLD** lights, 550 hrs.
- 4000, diesel, 8 spd., PS, w/QT loader
- 4000 SU, gas, 8 spd, 14.9x28
- 3930, 4WD, 14.9x28 w/Allied 394 loader w/230 hrs.
- 3000, gas, 8 spd, PS, 13.6x28, 3,200 hrs.
- 2600, diesel, 8 spd., LPTO, PS, 3,100 hrs.
- NH L425, gas skid loader
- JD 2555, 4WD, h **SOLD** 5 loader, 2,800 hrs.

**Equipment**

- FNH 492 haybine, w/hyd. swing, like new
- Ford 515 3pt 7' sickle bar mower
- Sauder snow blade
- NH 14 **SOLD** inverter
- Weights & roll bars to fit most Ford tractors
- Ford 8' 3 pt. stone rake w/gauge wheels 18.4x34 duals

**Ford Loaders**

- 7410 QT fits 2WD & 4WD, 5610 thru 7610
- 7210 QT fits 2 WD, 5000 thru 7610
- 777D QT fits 2WD, 5000 thru 7610
- 772 QT fits 2WD, 5000 thru 7610
- Farm Hand XL740 QT fits 2 & 4WD, 5000 thru 7610

All Tractors Tested On Our Farms.  
 -Please Call For Appointment-

**Burkholder Bros.**  
 Lebanon, PA

**717-272-2352 717-949-2123**

**CLAAS® Rollant round balers give you what you want**

The Rollant 66 makes fast work of 4'x5' bales. Its unique two-stage pick-up and close tines produce a clean, efficient harvest in less time. Rollatex netting wraps a bale in 10 seconds or less, and double-twine wraps it up in just 20.

The Rollant 46 introduced CLAAS's innovative fixed bale chamber to the marketplace. This versatile baler handles all farm operations from dry hay to silage. Nobody produces a better 4'x4' bale.

The Rollant 42 was designed for family livestock operations. This economical investment produces weather-tight 4'x4' bales for the highest nutrient content possible.

CLAAS bales mean nutrient-filled edible hay, low spoilage, and high crude protein retention.

Each Rollant offers the innovative chamber, low-profile pick-up, and world class dependability. And they all share CLAAS's international reputation for low maintenance, durability and long-life.

Call now to see how you can improve the round figures on your bottom line.



**—one quality round bale after another.**

Discover Quality...Discover Value...

**Discover CLAAS**  
 THE HARVESTING SPECIALIST

**MEYERS IMPLEMENTS, INC.**

400 North Antrim Way  
 Greencastle, PA 17225

Phone: (717) 597-2176 Fax: (717) 597-5349