

Are Micronutrients 'Weak Links' In Fertility Program?

NORCROSS, Ga.—An important part of a balanced fertility program includes being sure that secondary and micronutrients are not yield-limiting. Soil testing is the place to begin. Deficiencies of secondary nutrients such as sulfur and micronutrients such as zinc can limit responses to other nutrients and result in lower yields, higher cost per unit of production, and lower profitability.

Sulfur and zinc should receive special attention as high-residue, conservation-tillage production

systems are more widely utilized. Large amounts of surface residue insulate the soil, keeping it cooler and wetter longer in the spring. Both of these factors plus soil compaction hamper early plant growth, making it more difficult for the developing plants to obtain the nutrients they need.

Nutrient stratification can also be a problem in conservation tillage etc. With little opportunity for physical incorporation, applied nutrients such as zinc may concentrate near the soil surface. The lim-

ited early season development of roots at the soil surface where applied zinc accumulates results in lower nutrient availability than might be predicted through soil sampling procedures which include the zero to 6-inch soil layer. Sampling and analysis of the surface 2 or 3 inches of soil can detect nutrient stratification and allow corrective management decisions such as the use of starter fertilizer.

Much of the soil's potentially available sulfur is associated with

organic matter. Plants take up sulfate-sulfur which is leachable and may move down out of the surface soil with winter precipitation. Cool soil temperatures limit release of sulfur from organic matter. That fact combined with winter leaching suggests that inclusion of sulfur in starter fertilizers for conservation tillage may eliminate potential early season shortages and give plants a better chance for rapid growth and development.

High phosphorus availability can limit plant zinc uptake.

Phosphorus-containing starter fertilizers banded close to the row can enhance phosphorus uptake. If zinc is already borderline deficient, the increased phosphorus uptake can cause the zinc problem to become even more severe. If soil tests suggest that additional zinc is needed, including some of the zinc in starter fertilizer is a good way of meeting plant needs.

Be sure that your best management practices for conservation tillage crops include determination of sulfur and zinc needs.

Case IH Hay Equipment Holds Sales Training

NORTH CORNWALL (Lebanon Co.)—Case IH held a hay equipment sales training meeting at the Lebanon Fairgrounds recently.

Dennis Hann, Case IH regional sales manager, reported on the

increase in sales of large square balers, mower conditioners, disc mower conditioners, and rectangular balers in 1994.

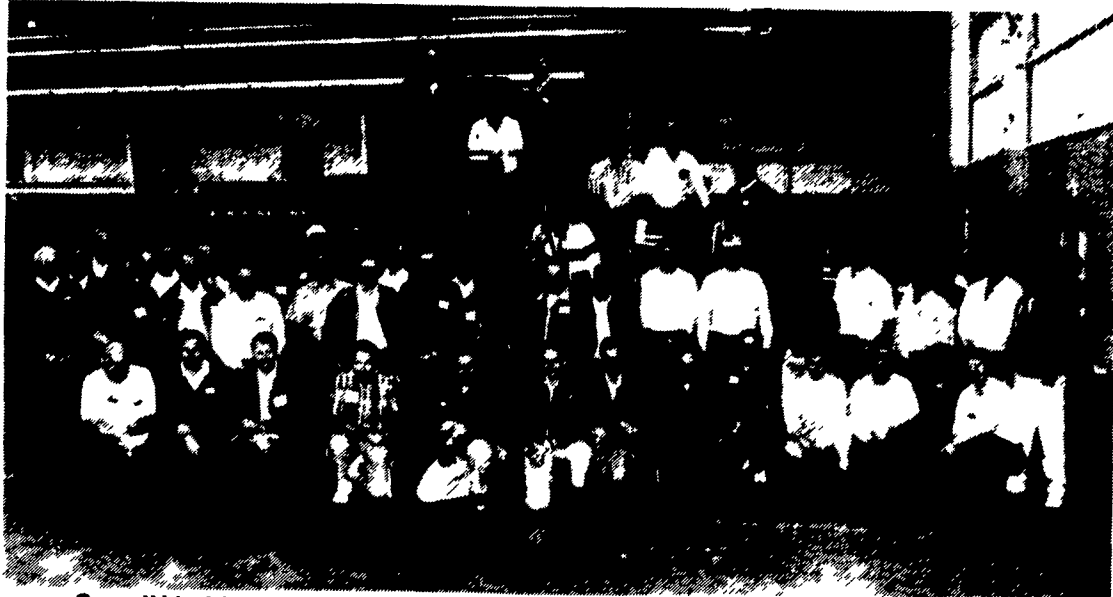
Training was given on Case IH 8430-8465 round balers, the 8330 mower conditioner, the new 8315

disc mower conditioner, 8570 large square baler, and the 8530 rectangular baler. Comparisons with competitors' equipment was also part of the training.

The salesmen had Case IH and competitors' machines to evaluate

in each session. The following dealers from New York, Maryland, Delaware and Pennsylvania were in attendance at the hay equipment sales training meeting: B&C Eq., Milford, Del.; H&E Farm Eq. Inc., Dover, Del.; Farm-Rite Inc., Shiloh, N.J.; H.B. DuVall Inc., Fredrick, Md.; Hooper Eq. Inc., Middletown, Del.; Whites Farm Supply, Lowville, N.Y.; Whites Farm Supply, Waterville, N.Y.; Lucas Cortland, Cortland, N.Y.; Hines Eq., Cresson, Pa.; Bender Imp., Somerset,

Pa.; Morris International, Everitt, Pa.; Chambersburg Farm Ser., Chambersburg, Pa.; A.L. Herr Bro., Quarryville, Pa.; C.B. Hooper & Son Inc., Intercourse, Pa.; Bangor Imp., Bangor, Pa.; Eckroth Bros., New Ringgold, Pa.; Zimmerman Farm Ser., Bethel, Pa.; Hetricks Farm Ser., New Bethlehem, Pa.; George Kinsman, Honesdale, Pa.; Terry Kahle, Knox, Pa.; Inca Eq. Co., McAlisterville, Pa.; and Carlisle Farm Service, Carlisle, Pa.



Case IH held a hay equipment sales training meeting at the Lebanon Fairgrounds recently. Dealers from New York, Maryland, Delaware and Pennsylvania were in attendance.

Ag-Chem Covers All Your Spraying Needs From Parts to Short Line Equipment

TANKS by ACE ROTO-MOLD

FOAM MARKERS

502TH SPRAYER

FOR MORE INFORMATION CONTACT

THE DEALER NEAREST YOU:

Leinbach Farm Supply
Shippensburg, PA
717-532-5511
1-800-346-2334

Plant Food Co.
Cranbury, NJ
609-448-0935

Stoltzfus
Morgantown, PA
215-286-5146

Webb's Super-Gro
Mill Hall, PA
717-726-425

Erb & Henry Equip.
New Berlinville, PA
215-367-2169

Delmar Grain
Delmar, DE
302-846-9567

Messick Farm Equip.
Elizabethtown, PA
717-653-8867

Triple H Equip.
Peach Bottom, PA
717-548-3775

Tri-County Farm & Home
Bloomsburg, PA
717-437-3440

COMPLETE LINE OF PARTS



Serving The Farming Industry For Over 31 Years.

1188 Enterprise Rd.
East Petersburg, PA 17520

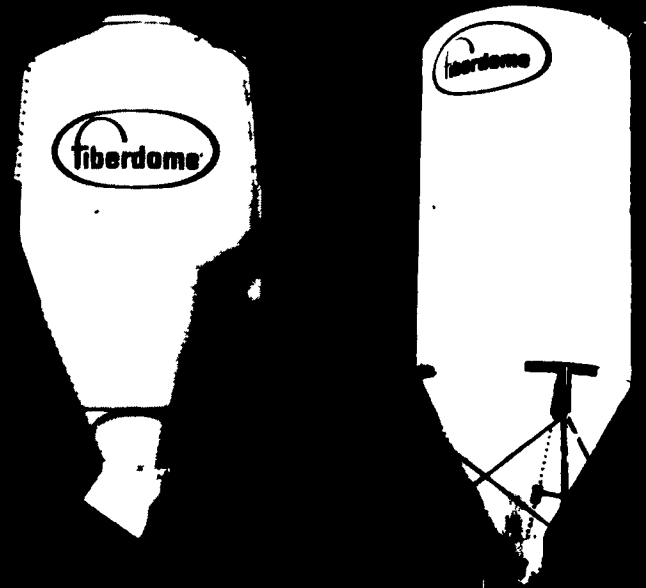
CALL FOR MORE INFORMATION:
(717) 569-2610



Why settle for 2nd best when Fiberdome now manufactures the most advanced fiberglass bulk bin available!

- Durable, long-lasting, weather-resistant
- Excellent heat and sound insulation
- Free from rust, mold, mildew, and weathering
- Precision engineered for long, long life
- Unique 5-year warranty
- Adaptable to any angle or location

Capacities from 15 to 40 ton
Standard 12' x 12' x 12' density. Individual Bin Available



Write for a full color brochure and a free sample of fiberglass. The modern material used for high-performing bins.

...made to last

Contact your nearest dealer.



P.O. Box 11 • Lake Mills, WI 53551
(414) 648-8376

SOLLENBERGER SILO
Chambersburg, PA
717-264-9588

SOMERSET BARN EQUIPMENT
Somerset, PA
814-445-5555

BRENNER DAIRY EQUIPMENT
Spartansburg, PA
814-654-7309

NISSLEY FEEDING EQUIPMENT
Willow St., PA
717-786-7654

HOOVER EQUIPMENT
Tyron, PA
814-684-1777

GNEGY SURGE SERVICE
Washington, PA
412-222-0444

DETWILER SILO
Newville, PA
717-776-8321

LANCASTER SILO
Lancaster, PA
717-299-3721

BADGER SALES & SERVICE
Spring Mills, PA
814-422-8279

FICKES SILO CO.
Newville, PA
717-776-3129

McMILLEN BROTHERS
Loyville, PA
717-789-3961

CEDAR CREST EQUIP.
Lebanon, PA
717-270-6600