

**(800) 533-3837**

**YOUR DIRECT LINE TO GENUINE GM PARTS**

When you call the number listed above you'll reach our wholesale parts specialists, who can help you keep your GM repair work moving quickly. Ask About:

- Specializing in GM Medium Duty Trucks, Current and Obsolete.
- \$500,000 Parts Inventory
- Parts Locator For Those Hard To Find Items
- We Ship Anywhere. Local Delivery Available.
- Experienced, Knowledgeable Personnel.

**LEFEVER BROS.**  
DILLSBURG

(717) 432-9697

Quality Dealer Since 1921  
406 U.S. Route 15 • Dillsburg, PA 17019



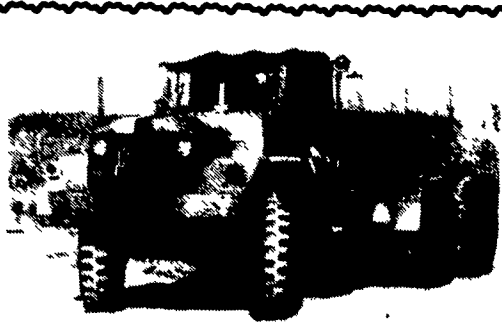
*Mr. Goodwrench*

**MOTORS**

New & Rebuilt  
350, 366,  
427, 454  
6.2 Diesels  
Rebuilt & Used  
Will Install  
Roll Back Service  
(at cost)  
717-762-6415

**1986 Landoll**

Hyd. detach 48' trailer,  
Air ride tandems,  
beaver tail, top deck,  
good condition  
**\$15,000**  
**717-265-9014**



**MACK 6x6 TRUCKS**

Cummins V8 Diesel Jake and full Air Brakes  
P.S. 1400/24 Tires Double Frame Rear Drag  
Winch (50,000 lbs.). Differential Locks. (60  
Tons) Hauling Capacity. Like New Only  
800-17,000 Miles. A must for every Farmer.  
**\$12,500 to \$15,500**  
**(814) 834-1018 St. Marys, PA**

**WILLIAM H. WESSELS  
USED CARS**

811 Route 15 Dillsburg, PA  
1-800-440-4433 1-717-432-2918  
Notary Public - Temporary Tags



**89 CHEVY C-30  
UTILITY TRUCK**  
350, Auto, PS, 10,500 GVW  
**\$7,900**



**87 IHC-1600**  
18" Box Diesel, Nice  
**\$9,900**



**92 FORD AEROSTAR**  
3.0 V6, Auto, AC, PS, Black,  
61,206 Miles  
**\$7,990**



**88 FORD F-250 4x4**  
8800 GVW, 5.8 V8, Auto, PS,  
142,360 Western Power Angle Plow  
**\$7,900**



**90 GMC 12" CUBE VAN**  
350 V-8, AC, Auto, 104,000 Miles  
**\$9,750**



**78 GMC 16' DUMP STAKE**  
350 V8, 21,200 GVW, As  
Trade  
**\$5,900**



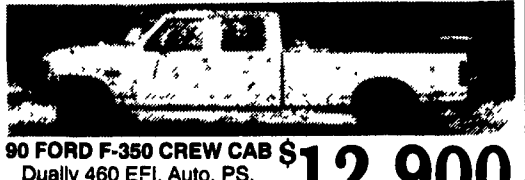
**95 FORD F350 UTILITY TRUCK**  
351, V-8, Auto, AC, PS, — Nice!  
**\$6,700**



**88 CHEV C-2500 4x4**  
305 V8, Auto, AC,  
120,116 Mi.  
**\$8,900**



**85 GMC 7000 BUCKET**  
TRUCK 36 Platform Height, 8.2  
Diesel, Auto, Ready To Work,  
Other Bucket To Choose From  
**\$12,500**

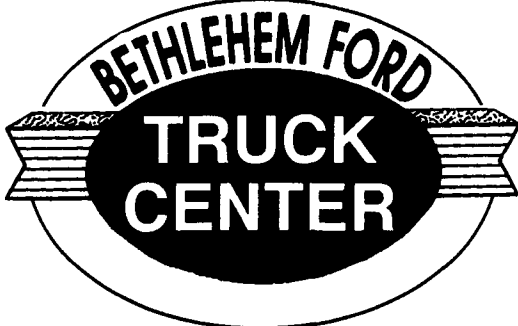


**90 FORD F-350 CREW CAB**  
Dually 460 EFI, Auto, PS,  
One Owner, 107,000 Mi.  
**\$12,900**

**WILLIAM H. WESSELS  
USED CARS**

811 Route 15 Dillsburg, PA  
1-800-440-4433 1-717-432-2918  
Notary Public - Temporary Tags

**MARCH  
IS TRUCK  
MONTH**



**250  
FORD TRUCKS  
AVAILABLE**

**1-800-NEW-FORD OR 610-694-0620**



**WHAT  
COMMERCIAL  
TRUCK BUYERS  
HAVE WANTED  
ALL ALONG!**

**IN STOCK:  
CREW CABS  
DIESELS  
TOWING-VEHICLES  
F-250s & F-350s**

**DUMP TRUCKS  
UTILITY TRUCKS  
CUBE VANS  
STAKE BODY TRUCKS  
CHASSIS CABS**

**HOME OF  
THE HARD  
TO FIND  
FORD  
TRUCK!!**

**IN STOCK  
TRUCKS  
OTHER  
DEALERS SAY  
ARE HARD TO  
GET!!**

**NO NEED  
TO SPECIAL  
ORDER!**

**CATERING TO  
CONTRACTORS  
AND  
INDEPENDENT  
BUSINESS  
OWNERS!!**

**PEOPLE ARE  
DRIVING 50, 100,  
200  
MILES TO THE  
ALL  
NEW BETHLEHEM  
FORD TRUCK  
CENTER!**

**TRAINED  
TRUCK  
SPECIALISTS  
TO HELP YOU  
WITH  
YOUR SPECIAL  
TRUCK NEEDS!**

<p><b>CREW CABS</b> 95 F-350 CREW CAB 4x2 5 Bl. AT A.C. Camper Tractor Pkg Was \$24,467 <b>Call For Price</b> 95 F-350 CREW CAB 4x4 5 Bl. AT Camper Tractor Pkg Was \$25,183 <b>Call For Price</b> 95 F-350 4x2 CREW CAB, XLT 7.5L AT Loaded Was \$29,333 <b>Call For Price</b> 95 CREW CAB 4x4 Turbo Diesel 5 Speed Loaded Was \$33,074 <b>Call For Price</b> 95 F-350 4x2 CREW CAB Diesel AT Loaded Was \$32,867 <b>Call For Price</b></p>	<p><b>UTILITY BODIES</b> 95 E-350 UTILITY SERVICE VAN Turbo Diesel AT Was \$31,488 <b>NOW \$28,988</b> 95 F-350 4x2 w/UTILITY BODY 5 Bl. AT Ladder Rack SRV Was \$22,619 <b>NOW \$20,588</b> 94 F-350 4x2 w/ENCLOSED UTILITY 5 Bl. 5 Speed Ladder Rack Was \$23,655 <b>NOW \$19,988</b> (2) 95 F-350 4x2 w/UTILITY BODY 5 Bl. AT Ladder Rack DRW Was \$23,368 <b>NOW \$19,488</b> 95 F-350 4x2 SUPER CAB w/UTILITY BODY Diesel AT w/Ladder Rack Was \$29,722 <b>Call For Price</b></p>	<p>(3) 95 F-350 4x2 DUMP W/TOOL BOX 5 Bl. 5 Speed Was \$23,293 <b>NOW \$20,988</b> 95 F-350 4x4 DUMP W/TOOL BOX 7.5L V8 5 Speed Was \$26,714 <b>Call For Price</b> <b>WORK VANS</b> (3) 95 E-350 CARGO VAN 5 Bl. AT Was \$21,333 <b>Call For Price</b> (3) 95 E-150 CARGO VAN 4 Bl. AT 1900# Payload Was \$18,285 <b>NOW \$15,988</b> 95 E-250 CARGO VAN 5 Bl. AT Was \$19,922 <b>Call For Price</b> 95 E-350 CARGO VAN 5 Bl. AT Bin Rack System Was \$21,553 <b>Call For Price</b> 95 E-350 CARGO VAN Turbo Diesel AT Was \$25,535 <b>Call For Price</b></p>
<p><b>WORK TRUCKS</b> 95 F-250 H.D. 4x2 4.9L AT 4.10 Axle Was \$17,757 <b>NOW \$15,688</b> (2) 95 F-350 4x4 w/Snow Plow 5 Bl. AT Was \$25,616 <b>NOW \$22,988</b> 95 F-350 SUPER CAB 4x2 w/Dump Stake 7.5L 5 Speed Was \$25,754 <b>Call For Price</b> (3) 95 F-250 4x4 XLT 5 Bl. AT Crossbox Bedliner Was \$27,337 <b>Call For Price</b> (3) 95 F-250 4x4 XL 5 Bl. AT w/Tool Boxes/Ladder Rack Was \$23,817 <b>NOW \$21,388</b></p>	<p><b>STAKE BODIES</b> 94 F-350 4x2 DUMP/STAKE w/Back Pack 5 Bl. AT Was \$25,175 <b>NOW \$21,588</b> 94 F-350 4x2 w/12 Ft. STAKEBODY, 5 Bl. Auto Bulkhead Tool Box Was \$22,401 <b>NOW \$18,488</b> 95 F-350 SUPER CAB 4X2 w/Dump Stake 7.5L 5 Speed 4.10 Ltd Slip Axle Was \$25,754 <b>Call For Price</b> 95 F-350 4x2 w/12 Ft. DUMP/STAKE 5 Bl. 5 Speed Was \$24,170 <b>NOW \$22,488</b> 94 F-350 4x2 w/DUMP/STAKE 5 Bl. AT 10 Ft w/Backpack Was \$25,680 <b>NOW \$21,888</b></p>	<p><b>CHASSIS CABS</b> 95 SUPER DUTY 7.5L 5 Speed 137" WB <b>NOW \$18,988</b> 95 F-350 CHASSIS 4x2 5 Bl. 5 Speed 137" WB Was \$18,830 <b>NOW \$16,388</b> 95 SUPER DUTY 4x2 Turbo Diesel 5 Speed XLT 137" WB Perfect For Wrecker Was \$26,052 <b>Call For Price</b> 95 SUPER DUTY 4x2 Turbo Diesel 5 Speed XLT 161" WB Perfect For Rollback Was \$28,095 <b>Call For Price</b></p>
<p><b>TOWING TRUCKS</b> 95 F-250 SUPER CAB 4x2 Turbo Diesel 5 Speed Loaded XLT Was \$28,204 <b>NOW \$24,588</b> 95 F-250 4x4 XLT 5 Bl. AT Camper/Trailer Pkg Was \$26,384 <b>Call For Price</b> 95 F-250 4x2 XLT 5 Bl. AT Camper Pkg Two Tone Paint Was \$23,458 <b>NOW \$20,288</b> 95 F-350 SUPER CAB XLT Turbo Diesel 5 Speed Loaded Was \$30,092 <b>Call For Price</b></p>	<p><b>DUMP TRUCKS</b> 95 F-350 4x4 DUMP W/BACK PACK 7.5L 5 Speed Was \$27,845 <b>NOW \$26,388</b> 94 F-350 4x2 DUMP W/BACK PACK 5 Bl. Auto Was \$24,890 <b>NOW \$20,988</b> 94 SUPER DUTY 4X2 DUMP W/TOOL BOX Turbo Diesel 5 Speed Was \$29,799 <b>NOW \$24,988</b> 95 F-350 4x4 w/DUMP Turbo Diesel AT Was \$34,159 <b>Call For Price</b></p>	<p><b>CUBE TRUCKS</b> 95 E-350 w/14 Ft. FIBERGLASS BODY 5 Bl. AT AC Was \$24,650 <b>NOW \$22,588</b> 95 SUPER DUTY w/12 Ft. DRY FREIGHT 7.5L 5 Speed Liftgate Was \$24,249 <b>NOW \$24,788</b> 95 E-350 w/15 Ft. CUBE BODY 5 Bl. AT Flat Floor Was \$24,249 <b>NOW \$22,288</b> 95 E-350 w/14 Ft. CUBE BODY 5 Bl. AT 2/Wheel Wells Was \$24,078 <b>NOW \$22,088</b></p>

All Prices Include Mfg/Commercial Rebates Tax and Tags Extra



**1740 EATON AVE., BETHLEHEM, PA**  
MON. THRU THURS. 9 AM-9 PM • FRI. & SAT. 9 AM - 6 PM