

1985 double duty hot shot 48' flat trailer w/5th wheel hookup, 950-16 tires. (201)875-4900.

1985 GMC Brigadier, 671T engine, 7-spd., w/tag axle, 18' body, good condition. 410/778-2651 after 6pm.

'92 Dodge B350 15 passenger, 360, auto, PS, PB, dual air & heat, AM-FM cassette, Michelin radials, 56,000 miles, blue, \$11,900. 717-733-2873

'91 GMC Rally STX, 8 passenger, 350 FI, auto, PS, PB, PW, PDL, cruise, tilt, AM-FM cassette stereo, dual air, privacy glass, Michelin radials, 39,000 miles, excellent condition, \$12,900. 717-733-2873

Allison HD 750 Automatic Transmission, \$1500. (717)359-9052.

STOCK HORSE UTILITY

Ponderosa Moritz Car Mate Remweld

STOCK - \$2650 and up (Includes 4 wheel brakes, break-away, spare holder and wheel, 6 1/2 high, 6' wide torsion axles)

HORSE - \$3000 and up (Includes 4 wheel brakes, break-away, spare holder and wheel, 6 1/2 high, 6' wide torsion axles feed manger, tack space, T-divider. feed door

SPECIALS - '92 Valley stock 18' 7" tall plywood lined \$2800
 '93 Valley stock 18' 7" tall plywood lined \$2800
 '77 Sand stock 18' 7" tall plywood lined \$1250
 Several use 2 horse \$550 and up
 '80 Armet stock 16' 7" tall \$1800
 '81 Keel stock 14' plywood lined inspected \$2000
 '83 Big Valley 14' GN plywood lined \$1600

Fisher Trailer Sales RD#2 Middle Rd.
 (717) 242-0941 Phone Strodes Mills
 (717) 242-4377 Fax McVeytown, Pa 17051



1988 MACK RD 688S 350-4 Valve, 12 Spd., Mack Trans., 18 Front 50,000 Lb. Mack Rear, Jake Brake, P.S., AC, Air Ride Cab 110,000 Orig. Mi. w/5000 Gal. Pres./Vac. Tank, 350 CMF pump powered by F3L1011 Deutz, 8" Load & Unload Valves, Complete Unit Put In Service 3-91 A-Title.....\$60,000
 Lanc. Co. (717) 733-8528



1988 F-250
 4x4, V8, Auto, PS, PB, Air, Tilt Wheel, Cruise, Dual Tanks, 4 Available
\$5,995-\$6,995
Countryside Auto Sales
 (717) 664-2170 Office
 (717) 865-3488 Home



1994 Dodge RAM 3500 Laramie S.L.T., Dualie, Cummins Turbo Diesel, Auto, PS, PB, PW, PDL, Cruise, Tilt, Air, **REDUCED** Package, 410 Ratio with Overdrive, Black, Less Than 500 Miles with 7-Year 100,000 Mile Engine Warranty.

A&J Auto Sales
 798 E. Main St. Rt. 322 East
 Ephrata, PA 17522
717-733-2873



1985 Chev Custom
 V8, Auto, PS, PB, AM/FM Stereo, Very Good Cond.
\$4,950
Countryside Auto Sales
 (717) 664-2170 Office
 (717) 865-3488 Home

1995 Dodge Ram 4x4 3/4 Ton Laramie SLT



white with grey cloth, trailer tow package, snow plow prep, anti-spin, slide rear window, cab clearance lights, power mirrors, automatic transmission
\$25,875.00
MGM FARMS
 410-557-9314

1995 DODGE RAM T-300 PICKUP



30 AVAILABLE

1995 DODGE DAKOTA CLUB CABS 2WD & 4WD



28 AVAILABLE

We Are One Of The Largest Volume Dodge Truck Dealers East Of The Mississippi
Volume Stocking Permits Volume Discounts!

Joe Dell's
L&B
 DODGE CHRYSLER PLYMOUTH
 ROUTE 422, ROBESONIA, PA (215) 693-5855

"National Award-Winning Dealer"
 "Ask A Friend About Us"
1-800-800-2623

INTERNATIONAL DANVILLE SALES & SERVICE, INC.
 R.D. #1, Box 321-D, Rt 11, Northumberland, PA 17857



NEW & USED TRUCKS IN STOCK

- 1995 Int. (Municipal) 36,220 GVW, DT466 - 250 HP, 5+2, 11RX22.5
- 1995 Int. 4900, 32,580 GVW, 6+, DT-466 @ 250HP, 11Rx22.5 - Loaded
- 1995 Int. 4700, 25,500 GVW, T444E @ 175HP 5 Spd., Red (No CDL)
- 1995 Int. 4700 Lo-Profile, T444E @ 175HP, 5 Spd., White, 23,440 GVW
- 1990 Int. 4900, 29,000 GVW, DT 466 @ 185HP, 5 Spd., Spoke Wheels, 236WB
- 1989 Int. F1954, 52,000 GVW, DT466 @ 210HP, 7 Spd., DISC., 24' FRP w/Liftgate & SD
- 1988 Int. 2375, 33,000 GVW, L10 Cum. @ 240 HP, 9 Spd., Jake Brake, A/C
- 1985 - Int. 2275, 33,000 GVW, NTC Cum. @ 240HP, 9 Spd., 155,000 Orig. Miles

Call Now - 800-637-0505 or 717-275-4480

Keystone Peterbilt, Inc.

1467 Manheim Pike • P.O. Box 4396 • Lancaster, PA 17604

1-800-243-2458  **717-299-6630**

1995 MODEL 330 MEDIUM DUTY PETERBILT Engine Cat 3116 230 HP, Transmission Fuller FS6306A, 6 Speed, Rear Axle Eaton 21065S 21,000 Front Axle Eaton EFA 12F4 12,000 Wheel Base 190 Cab to Axle 120 Cab to End of Frame 195 33,000 GVW



1981 FREIGHTLINER Cummins Big Cam 350 HP, Fuller RT 9509H 9 Speed Trans., Rockwell SQ HD, 4 11, Air Suspension



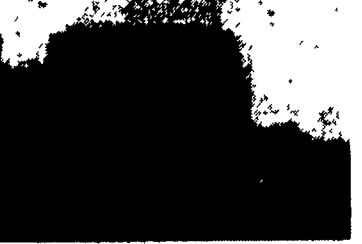
1979 GMC BRIGADIER 3206 Cat 210 HP, 5 Speed, 2 Speed Rear, 48,000 Lb GVW, Tag Axle, 20' Van Body



1988 PETERBILT 362-90" 340GB 350 Cat, RTX 1409B Trans., DS402- 4.33 Axle, Pete Low Air Leaf Suspension



1990 PETERBILT 362, 90" BBC; CAT 3176, 325 HP; BFA 12F4 Front Axle, 12,000 Lbs.; Eaton DS 402 Rear, 40,000 Lbs., RT012609B Trans., Peterbilt Low Air Leaf



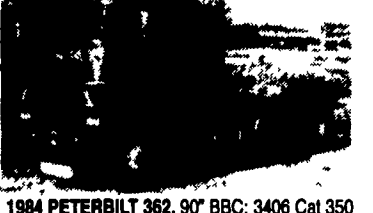
1989 FREIGHTLINER FLT-96, 2 Axle Tractor, 3406 Eng. RTX1609B Trans., RS23 1160 R Axle, Spring Susp.



1984 KENWORTH W500, Eng. NTC 400, Trans, 13 Speed, R. Axle 38,000 Lbs., Air Ride



1979 PETERBILT Model 350, Large Sleeper (Custom), 3406B CAT 400hp (1987), 250" WB, 13-Speed, CAT Retarder, Air Ride Susp., Power Steering



1984 PETERBILT 362, 90" BBC; 3406 Cat 350 Hp; 9 Speed, Tandem Axle, Power Steer; Air Ride; 22.5 Tires; Steel-Budd Wheels