

## The Engine "Life-Saver" System "48 PLUS"

a formula added to your oil increases horsepower & mileage, faster starting, less wear internal. I recommend trying one can. Treats most car engines. If not satisfied company will give full refund. Price per can \$15.90 with tax

For more information:  
**Simeon Zook**  
 R.D. 2 Box 684  
 Newmanstown, PA 17073

Taylor Forklift, 12,000lb., gas, pneumatic tires, 6' fork, \$9500. 717/354-3105.

Vermeer stump grinder, model 10, V-4 Wisconsin engine, engine needs work. 609/585-6552.

WANTED: 36" backhoe bucket for Case 530. (717)532-9023.

WANT TO BUY all makes and models of construction equipment. (301) 694-6148, (301)371-9299 fax.

Water pump, 4" contractor pump, 40,000 GPH, 4-cyl. Wisconsin engine, very good condition, \$2500 OBO. 610-779-8840.

**1992 JD 655B CRAWLER LOADER,**  
 1122 hours,  
 like new  
**717-292-7260**

### NEW FROM BELARUS Diesel Power Units Ideal For Repowering Small Construction Equipment

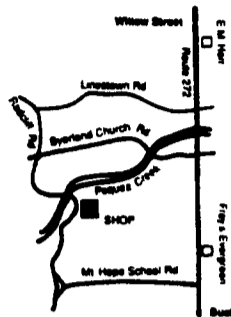
- Rugged Cast Iron Construction
- Slow Speed, High Torque
- SAE Bell Housing
- Very Fuel Efficient
- Spinner Type Oil Filter for Cleaner Oil



Installation Available

**Pleasant Pequea Power**  
 Sales Service Parts

360 Radcliff Rd., Willow Street, PA 17584



## FORKLIFTS

Used  
 Buy • Sell • Lease



Yale 4000 LB capacity triple mast 13' lift, propane, power steering  
**\$3,500**

- \* Clark, 2000 Lb. Propane ..... \$2,500
- \* Hyster 2000 Lb., Air Tires ..... \$1,950
- \* Yale 3000 Lb., Propane ..... \$2,800
- \* Clark, 4000 Lb., 83/189, Triple Mast ..... \$2,000
- \* A-C 4000 Lb., Propane ..... \$4,850

**Universal Equipment Inc.**  
 (717) 533-7377

### 3 SILOS AND UNLOADERS

#### UNADILLA WOOD SILOS Sales & Service Leasing Available



- Silo Roofing
- Wooden Silo Liners
- Distributors and Pipes
- Wood Feed Carts
- Hay Racks
- Silo Homes
- Used Silos When Available
- 12" Goosenecks Installed On Sealed Silos

**DANIEL S. STOLTZFUS**  
 R.D. 2, Narvon, PA 17555  
 717-354-4374

### Case 252, 602, 1102 Rollers Demonstrators Call For Special Pricing

- (3) 1994 580 Super K loader extend-a-hoe, 2WD canopy (rental units).....Call for special pricing
  - 1987 580K, canopy, standard hoe, 2WD.....P.O.R.
  - 1989 580K, canopy, standard hoe, 2WD.....P.O.R.
  - Case 580D, loader backhoe.....P.O.R.
  - Case 1835B unloader.....P.O.R.
  - 1 (2) 1985 Kabelco articulated loader, Model 500.....\$29,900
- Used Trailers in Stock Call For Information

**Vernon E. Stup Co.**  
 5859 Urbana Pike  
 Frederick, Md. 21701  
 301-663-3185

### 3 SILOS AND UNLOADERS

#### Solid Poured Walls



- Bunker Silos
- Retaining Walls
- Manure Pits
- House Basements
- 2' to 12' high walls- 6"-8"-10"-12" thick

#### LANCASTER POURED SOLID WALLS



#### WARNING ALL SILO OWNERS

It's important that you know your silo needs maintenance. Your silo will not fall when it's empty. Please check your silo for damage or check your insurance policy. **Shotcrete is your best, with fiber and retarder for interior work on silo walls - troweled smooth (walls cleaned before coating)**



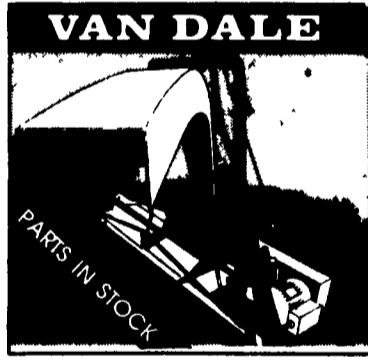
**Terramite Mini Loader Backhoe**  
**\$4,500 Firm**

**Heavy Equipment Loader Parts, Inc.**  
 RD 2, Box 2230, Route 22, Grantville, PA 17028  
 (717) 469-0039  
 (800) 446-0505 FAX (717) 469-7679



THIS IS THE BEST HAYLAGE SILO UNLOADER

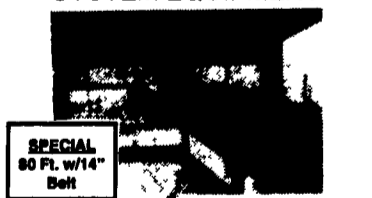
BUILT TO LAST  
**HANSON**  
 There is a difference



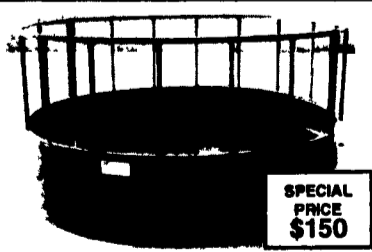
**VAN DALE**

PARTS IN STOCK

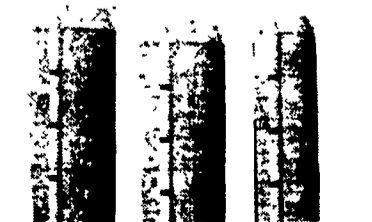
#### Lancaster BRAND FEEDING SYSTEM EQUIPMENT



SPECIAL 80 Ft. w/14" Belt



SPECIAL PRICE \$150



New & Used Silos

- Used 16' Hanson Unloader, rebuilt
- Used 20' Hanson Unloader, rebuilt
- Used 20x70 Lancaster Silo- disassembled on skid, good price
- Used Rollermills on hand
- NH 892 Harvester w/New Knives, Shearbar, Elec. Control, Nice.....\$5,500
- Round Hay Feeders.....\$150
- New & Used Rollermills...In Stock
- Farm Gates Made w/High Tensile Steel Tubing
- NH 315 Baler w/Kawasaki Eng., Rebuilt, Good Cond.....\$5,500
- (4) Rebuilt Blowers, like new
- Used Steiner Mixer.....\$2,000
- New Knight Mixer.....\$5,000
- Van Dale 300 Cu. Tow Mixer w/Scales, Nice.....\$9,000
- Used 85' Taper Board Feeder, Fair.....\$800
- NH 3 Row Auger Feed Cornhead
- New Idea 2 Row Narrow Picker
- NH 2 Row Corn & Grass Head, OK
- Rebuilt Blower For Hanson or Van Dale Unloader

### Lancaster Silo Co., Inc.

2008 Horseshoe Rd. • Lancaster, PA • (717) 299-3721

FOR SALE

Very Good Used

#### FARMMASTER MIXER

11 Cu Ft

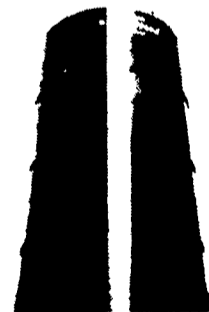
with beam scale

and

#### 190 RISSLER MIXER

with beam scale

### ATTENTION HARVESTORE OWNERS



Are you tired of spending all your profit on replacing chains, sprockets, floor, etc? Let Silo Conversion Co. convert your Harvestore® into a usable and profitable top unloading silo.

Call Jim Beckham at

#### SILO CONVERSION CO. INC.

(812) 944-7102

8 yrs. experience installing doors in Harvestore® Silos.

### PARTS PRICED RIGHT DISMANTLING MOST MAKES & MODELS

#### OF CONSTRUCTION EQUIPMENT

- |            |             |               |
|------------|-------------|---------------|
| Cat        | IHC         | Gallon        |
| Case       | Michigan    | Wabco         |
| John Deere | Hough       | Dynahoe       |
| Trojan     | Terex       | Koehring      |
| Drott      | Hein Werner | AC/Fiat Allis |
- & Others

#### Over 600 Machines Dismantled

#### NATIONWIDE PARTS LOCATING SERVICE

We have three Computer Parts Locator Networks, Nationwide & Canada, ready to serve you. In less than a minute over 600 Used & New Parts Dealers will receive your parts request. Parts are located easily & at substantial savings. Try Our Services.

Save \$\$\$ Parts Shipped Anywhere Direct To You. All Parts Guaranteed "We Return All Phone Calls"

### BALANDA EQUIPMENT CO., INC.

P.O. Box 407 • Route 29 • Palm, PA 18070  
 Phone: (215) 679-3900  
 Fax: (215) 679-8727

TOLL FREE: 1-800-322-8030

DON'T BE SLOW



Call Now To Place Your CLASSIFIED AD

Ph: 717-394-3047 or 717-626-1164